

2

18 TON CR

TEREX CD 118

rough terrain crane
18 ton capacity

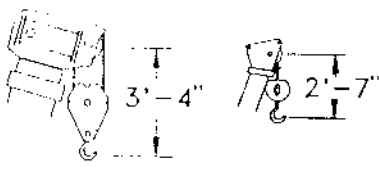
range diagram & lifting capacities

REDUCTION IN MAIN BOOM CAPACITY

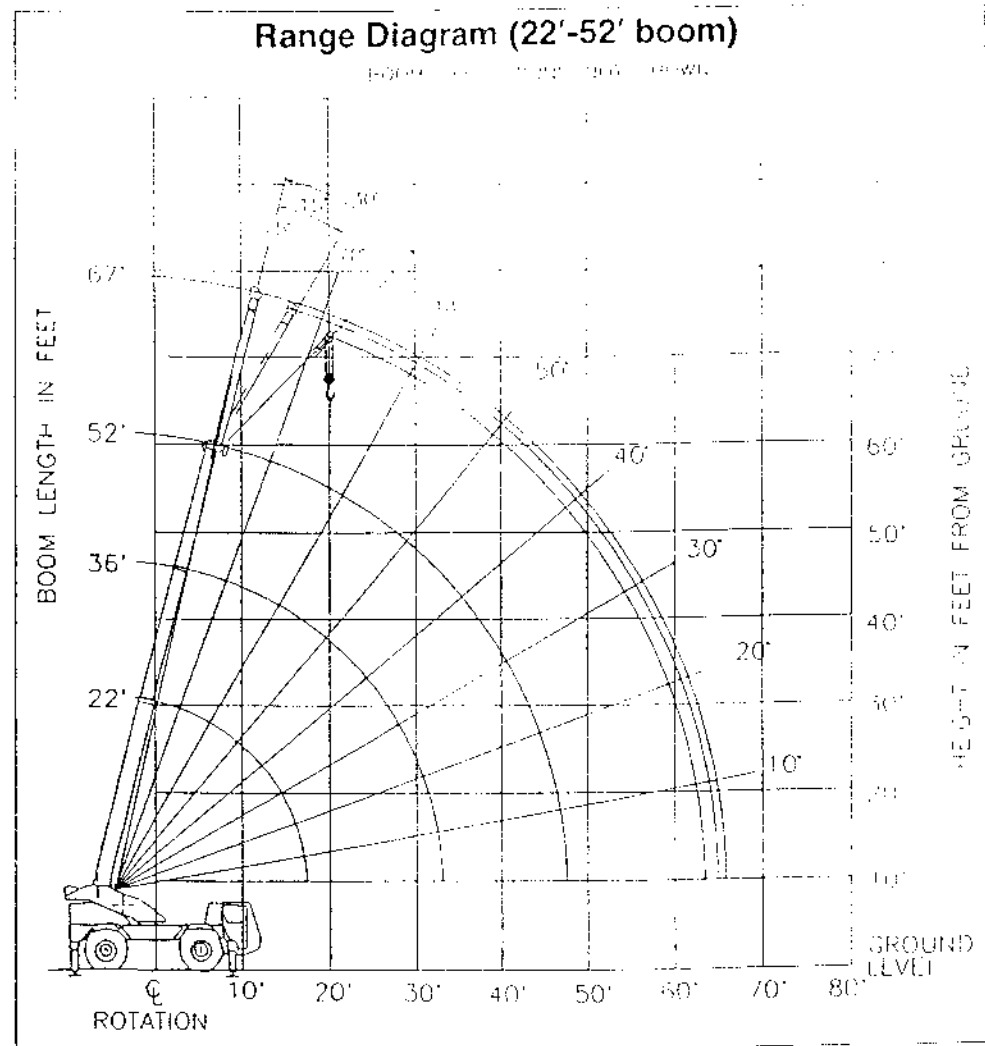
All Jibs in Stowed Position	0 Lbs.
15' Jib Erected	500 Lbs.

HOOK BLOCK WEIGHTS

Hook & Ball	121 Lbs.
Hook Block (2 Sheave)	325 Lbs.
Hook Block (3 Sheave)	350 Lbs.



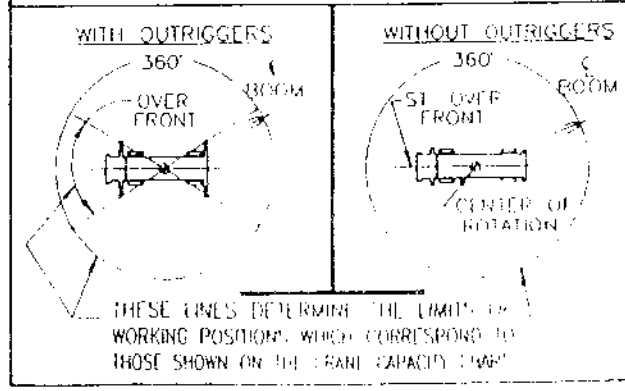
Dimensions are for largest factory furnished hook block and hook & ball, with anti-two block activated.



CD 118 TURNING CIRCLES

	2-Wheel Steer	4-Wheel Steer
Turning Radius	22' 4"	14' 10.5"
Curb Clearance Circle (Over 15.00 x 22.5 Tires)	45' 11.5"	31' 0.5"
Machine Clearance Circle (Over Boom Head)	49' 0"	34' 2"
(Over Stowed Jib)	50' 7"	35' 9"

CRANE WORKING POSITIONS



Lifting Capacities — Pounds

(22'-52' boom)

18 100 CD

MODEL CD 118

CRANE MODEL	118	STABILITY PERCENTAGE	
BOOM LENGTH	22'-52'	ON OUTRIGGERS	85%
CRANE WEIGHT	10,000 LB	ON TOWER	75%
		WIND LOAD	5.73

CAUTION: Do not use this specification sheet as a load rating chart. The format of data is not consistent with the machine chart and may be subject to change.

ON OUTRIGGERS

LOAD RADIUS (FT)	BOOM LENGTH 22 FT			BOOM LENGTH 36 FT			BOOM LENGTH 52 FT			LOAD RADIUS (FT)
	LOADED BOOM ANGLE (DEG)	OVER FRONT (LB)	360° (LB)	LOADED BOOM ANGLE (DEG)	OVER FRONT (LB)	360° (LB)	LOADED BOOM ANGLE (DEG)	OVER FRONT (LB)	360° (LB)	
5	75.0	36,000*	36,000*							5
6	64.5	30,000*	30,000*							6
8	58.4	28,400*	28,400*	71.3	26,500*	26,500*				8
10	51.9	23,100*	23,100*	67.9	23,200*	22,900*				10
12	44.6	18,300*	18,300*	64.4	19,200*	18,700*				12
15	31.0	14,500*	14,500*	58.8	14,900*	14,500*	60.0	15,000*	14,700*	15
18				52.9	12,000*	11,700*	65.4	12,100*	11,800*	18
20				48.7	10,500*	10,200*	62.9	10,700*	10,400*	20
25				36.4	7,900*	7,400*	56.4	8,000*	7,500*	25
30				17.5	6,100*	5,400*	49.4	6,300*	5,600*	30
35							41.4	5,000*	4,200*	35
40							31.8	3,900*	3,300*	40
45							17.9	3,100*	2,600*	45
50										50

* MAXIMUM CAPACITY AT 0 DEGREE BOOM ANGLE

BOOM LENGTH 22 FT			BOOM LENGTH 36 FT			BOOM LENGTH 52 FT		
LOAD RADIUS (FT)	OVER FRONT (LB)	360° (LB)	LOAD RADIUS (FT)	OVER FRONT (LB)	360° (LB)	LOAD RADIUS (FT)	OVER FRONT (LB)	360° (LB)
17.5	8,500*	8,500*	31.3	4,500*	4,500*	47.1	2,500*	2,300*

ON TIRES

RADIUS (FT)	MAX BOOM LENGTH (FT)	15.00 X 22.5-16PH				RADIUS (FT)
		STATIONARY		PICK & CARRY		
		360°	STRAIGHT OVER FRONT	CRFFP	2.5 MPH	
6	22	15,500*				6
8	22	13,300*				8
10	22	10,300*	15,500*	12,300*	10,100*	10
12	36	8,300*	13,300*	10,500*	8,600*	12
15	36	6,300*	9,900*	8,100*	6,900*	15
18	52	4,900*	7,350*	7,500*	5,600*	18
20	52	4,000*	6,700*	6,200*	5,000*	20
25	52	2,700*	4,800*	4,300*	3,800*	25
30	52	2,000*	3,100*	3,000*	2,900*	30
35	52	1,400*	2,500*	2,400*	2,300*	35
40	52	1,100*	1,800*	1,700*	1,600*	40
45	52	700*	1,400*	1,300*	1,400*	45

Note: For Tire Capacities:

- A. For Pick and Carry Operations: Do not extend the boom over the rated length.
- B. Do not extend the outriggers from swaying.
- C. Capacity is based on a maximum load of 10,000 lbs. (4,536 kg).
- D. Use a 100% safety factor for all loads.
- E. Without outriggers, boom maximum length is 100% of rated boom length.

SIDE STOW JIB ON OUTRIGGERS

LOADED BOOM ANGLE (DEG)	LOAD RADIUS (REF) (FT)	15 FT OFFSETTABLE JIB						LOADED BOOM ANGLE (DEG)
		0° OFFSET		15° OFFSET		30° OFFSET		
		360° (LB)	LOAD RADIUS (REF) (FT)	360° (LB)	LOAD RADIUS (REF) (FT)	360° (LB)	LOAD RADIUS (REF) (FT)	
75	16'-2"	5,500*	18'-4"	4,100*	21'-1"	3,400*	75	
73	18'-9"	5,500*	21'-1"	4,000*	23'-8"	3,400*	73	
71	21'-2"	5,400*	23'-9"	3,800*	26'-1"	3,200*	71	
68	24'-8"	5,400*	27'-5"	3,600*	28'-7"	3,100*	68	
65	27'-11"	5,000*	30'-10"	3,500*	32'-0"	3,000*	65	
62	31'-1"	4,700*	34'-6"	3,300*	35'-11"	2,900*	62	
59	34'-1"	4,400*	37'-0"	3,200*	38'-9"	2,800*	59	
55	37'-10"	4,000*	40'-4"	3,100*	41'-10"	2,700*	55	
51	41'-5"	3,500*	43'-5"	3,100*	44'-10"	2,600*	51	
47	44'-6"	3,000*	46'-5"	2,900*	47'-10"	2,600*	47	
43	47'-5"	2,700*	49'-3"	2,800*	50'-5"	2,500*	43	
38	51'-0"	2,400*	52'-3"	2,700*	53'-5"	2,400*	38	
32	54'-4"	2,000*	54'-8"	1,900*	55'-5"	2,300*	32	
25	57'-8"	1,800*	59'-6"	1,700*			25	
17	61'-1"	1,500*	63'-3"	1,500*			17	
0	63'-3"	1,400*					0	

Note: For Jib Capacities:

- A. For all booms, the load must be maintained with the boom at the rated angle only when using outriggers.
- B. For boom angle not shown, use the capacity of the next lower boom angle.
- C. Rated loads are for fully extended main boom only.

RECOMMENDED TIRE PRESSURE

BOOM SIZE	STATIONARY	CRFFP	2.5 MPH	HAVE IT
15.00 X 22.5-16PH	100 PSI	100 PSI	100 PSI	100 PSI

MAXIMUM PERMISSIBLE HOIST LINE LOAD

LINE PARTS	1	2	3	4	5
6X19 FIBER OPTIC CABLE	6,000	11,000	18,000	24,000	30,000
6X19 FIBER OPTIC CABLE	6,000	11,000	17,000	23,000	29,000
6X19 FIBER OPTIC	6,000	11,000	17,000	23,000	29,000
6X19 FIBER OPTIC	6,000	11,000	17,000	23,000	29,000