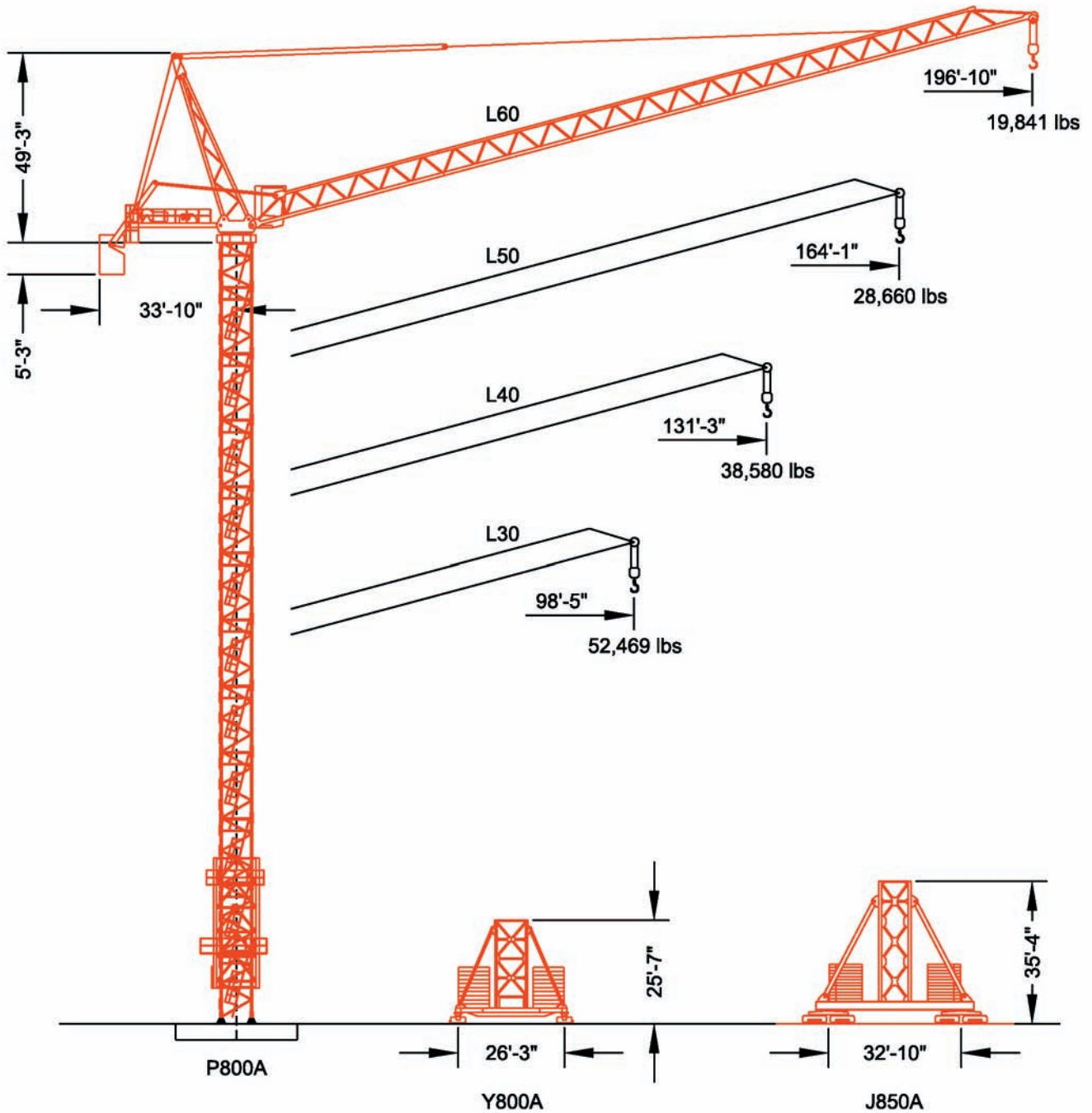




MR 605B-H32

MAXIM
1 877 MAX LIFT

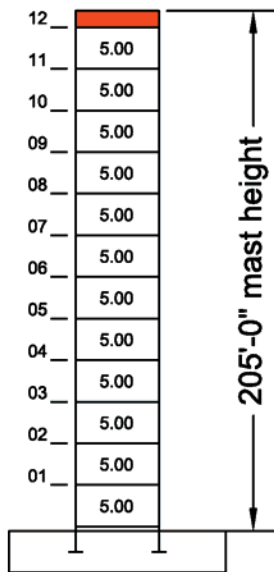
Maximum Capacity = 70,547 lbs



F.E.M. 1.001

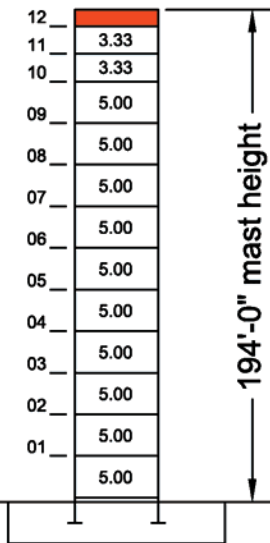
Maximum Free-Standing Mast Heights

L30 Jib



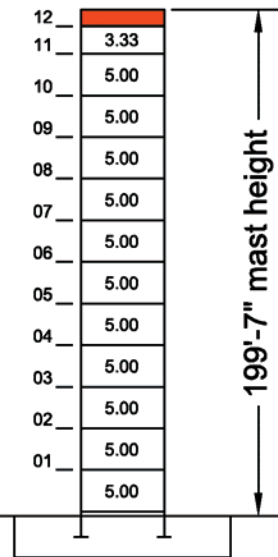
P800A

L40 thru L50 Jibs



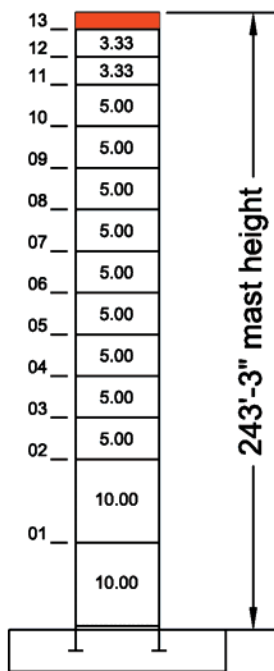
P800A

L60 Jib



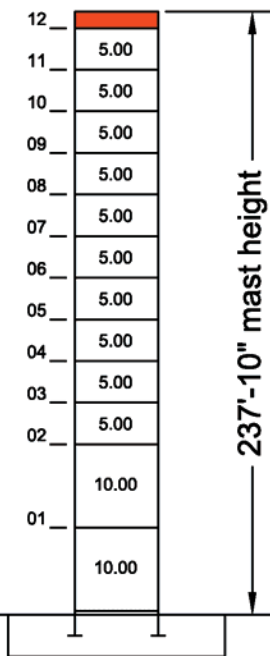
P800A

L30 Jib



P850A

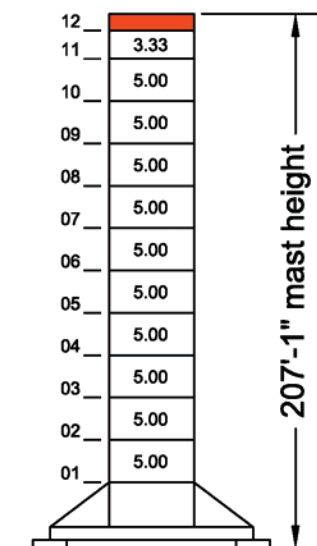
L40 thru L60 Jibs



P850A

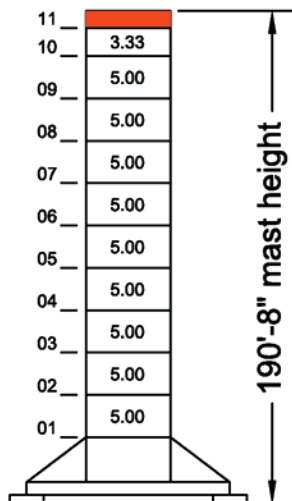
Maximum Free-Standing Mast Heights

L30 Jib



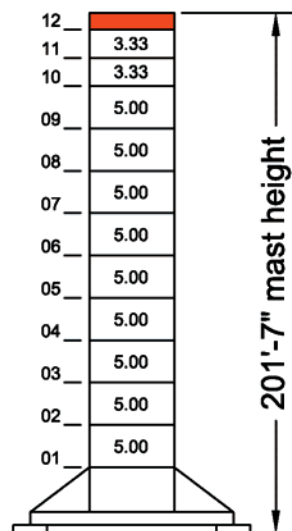
Y800A

L40 thru L50 Jibs



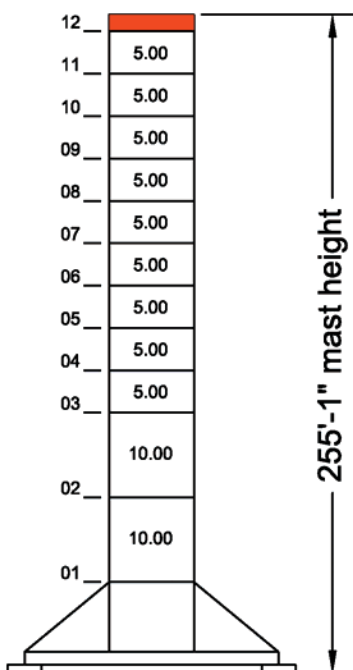
Y800A

L60 Jib



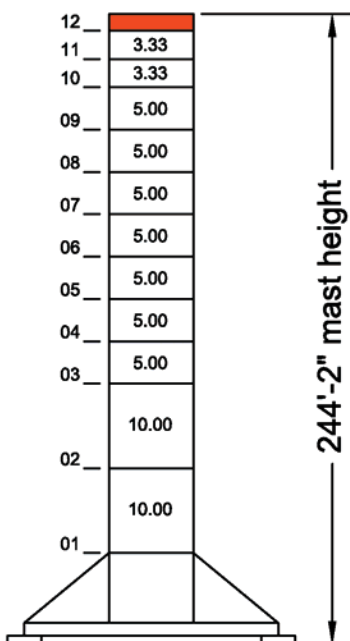
Y800A

L30 Jib



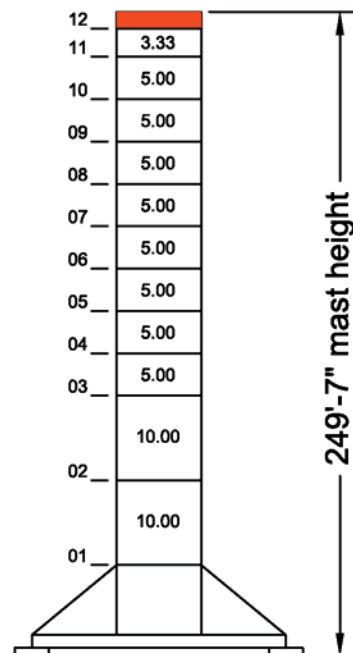
J850A

L40 thru L50 Jibs



J850A

L60 Jib



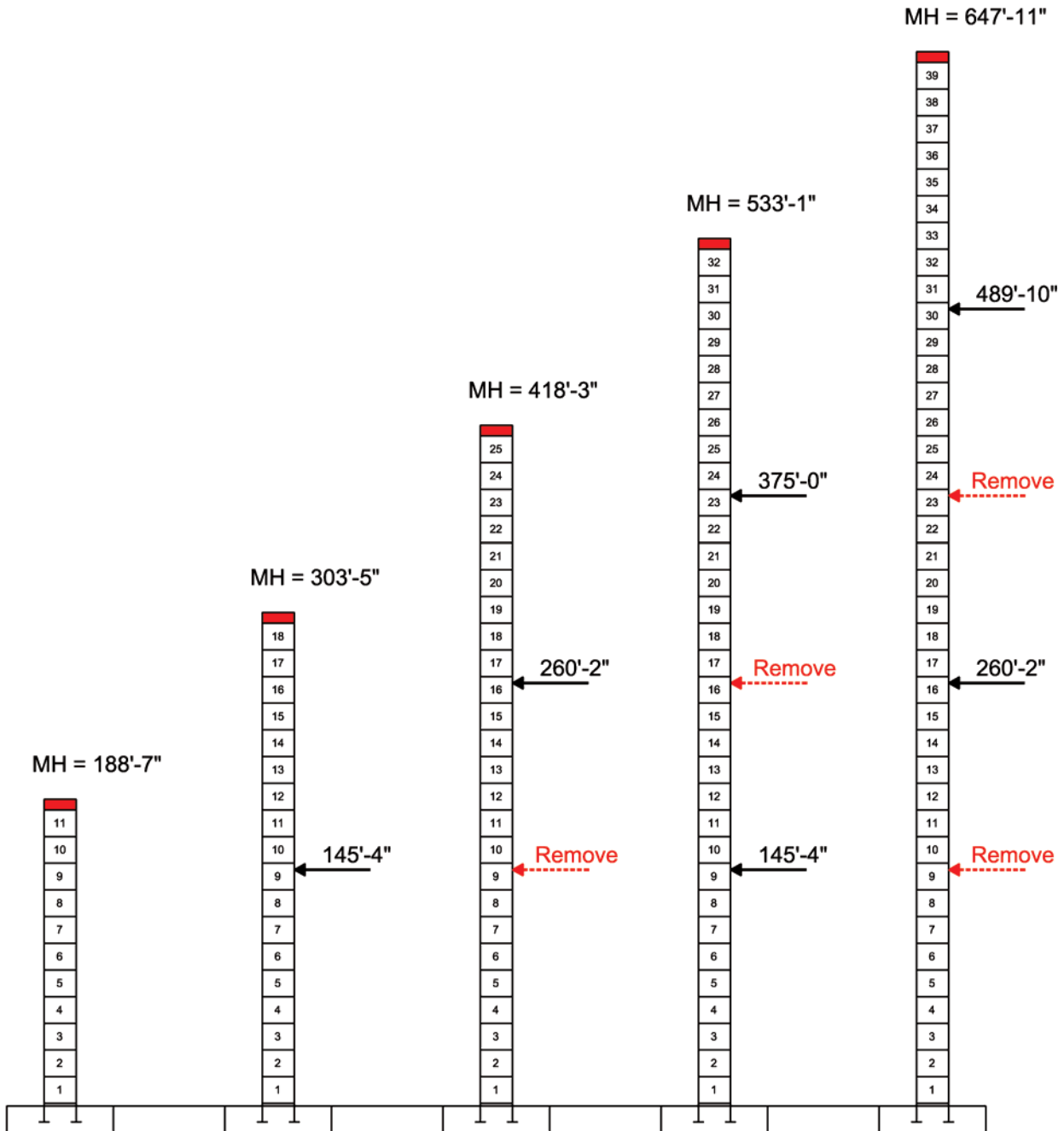
J850A

Climb Schedule Using Standard KR839 Mast

Jib Configurations: L30 thru L60 (98'-5" thru 196'-10")

P800A Foundation Anchors

This panel is 7.625"



Rated Load Chart

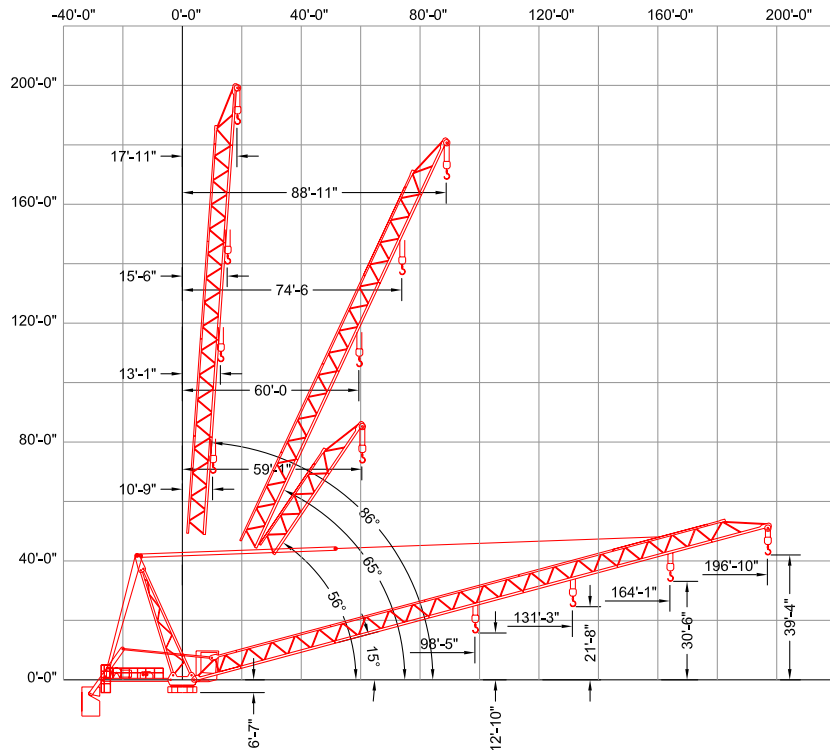
Capacity (lbs)

Hook Radius	Jib Lengths			
	196'-10"	164'-1"	131'-3"	98'-5"
20'-0"	35,274	52,910	70,547	70,547
30'-0"	35,274	52,910	70,547	70,547
40'-0"	35,274	52,910	70,547	70,547
50'-0"	35,274	52,910	70,547	70,547
60'-0"	35,274	52,910	70,547	70,547
70'-0"	35,274	52,910	70,547	70,547
80'-0"	35,274	52,910	64,982	65,163
90'-0"	35,274	52,910	57,468	57,629
98'-5"	35,274	49,530	52,322	52,469
100'-0"	35,274	48,708	51,457	
110'-0"	35,274	44,040	46,538	
120'-0"	33,537	40,149	42,440	
130'-0"	30,838	36,857	38,972	
131'-3"	30,534	36,486	38,580	
140'-0"	28,525	34,036		
150'-0"	26,521	31,590		
160'-0"	24,767	29,451		
164'-1"	24,118	28,660		
170'-0"	23,219			
180'-0"	21,843			
190'-0"	20,612			
196'-10"	19,841			

Max. Load Radius

From	17'-11"	15'-6"	13'-1"	10'-9"
To	114'-4"	92'-5"	73'-11"	74'-1"

Red line indicates the division between 4-part line and 2-part line



MR 605B-H32

Manitowoc
Crane Group

This panel is 7.625"

Mechanical Data

Function	Hoist Type	Speed vs Weight	2-part				4-part				Motor (hp)	Motor (kW)	Rope Length (ft)
			1st Gear	2nd Gear	3rd Gear	4th Gear	1st Gear	2nd Gear	3rd Gear	4th Gear			
Hoist	132 S8.0 L1090	ft/min lbs	151 35,274	236 22,267	374 13,007	598 7,165	75 70,548	118 44,533	187 26,015	299 14,330	212	158	3,576
Boom	90 VBR		from 15° to 86° in 2 min 44 s								106	79	
Swing	R - 13.2	rpm	0.80								3 x 7.1	3 x 5.3	

Power Requirements: 480 V (+6% or -10%) 60 Hz measured at turn table.

Amperage: 132 S8.0: 391 Amp (3 phase service with ground)

Note: Values given under "Rope Length" are for drum spooling capacity only. Use the following equation to calculate the required rope length.

$$RRL = DRL + (N \times RLH) + 30\text{-ft}$$

Dead Rope Lengths

L60 319-ft

L50 286-ft

L40 253-ft

L30 220-ft

RRL = Required Rope Length

DRL = Dead Rope Length

N = 2 for two-part reeving

N = 4 for four-part reeving

*RLH = Required Lifting Height.

Note: A hook height is the distance from the bottom of hook to the top of crane foundation. RLH will equal the hook height unless special lifts are made below the top of crane footing such as the crane making a pick down in a hole. The RLH in this case would be the hook height plus the depth of the hole.

Example:

A MR 605 with a hook height of 280-ft., full length jib, hook block in 2-part configuration, and a 40-ft. drop from the crane foundation to the lowest point in the lay down yard.

$$RRL = 319 + (2 \times (280 + 40)) + 30 = 989\text{-ft.}$$

Constant improvement and engineering progress make it necessary that we reserve the right to make specification, equipment, and price changes without notice. Illustrations shown may include optional equipment and accessories, and may not include all standard equipment. Product brochures are for illustration purposes only. Contact the manufacturer or consult the operation manual for specific details concerning this product.

Manitowoc Crane Group - Americas

Shady Grove, Pennsylvania Facility
 1565 Buchanan Trail East
 Shady Grove, PA 17256-0021, USA
 Tel: [Int + 001] 717 597 8121
 Fax: [Int + 001] 717 597 4062



MR 605B-H32