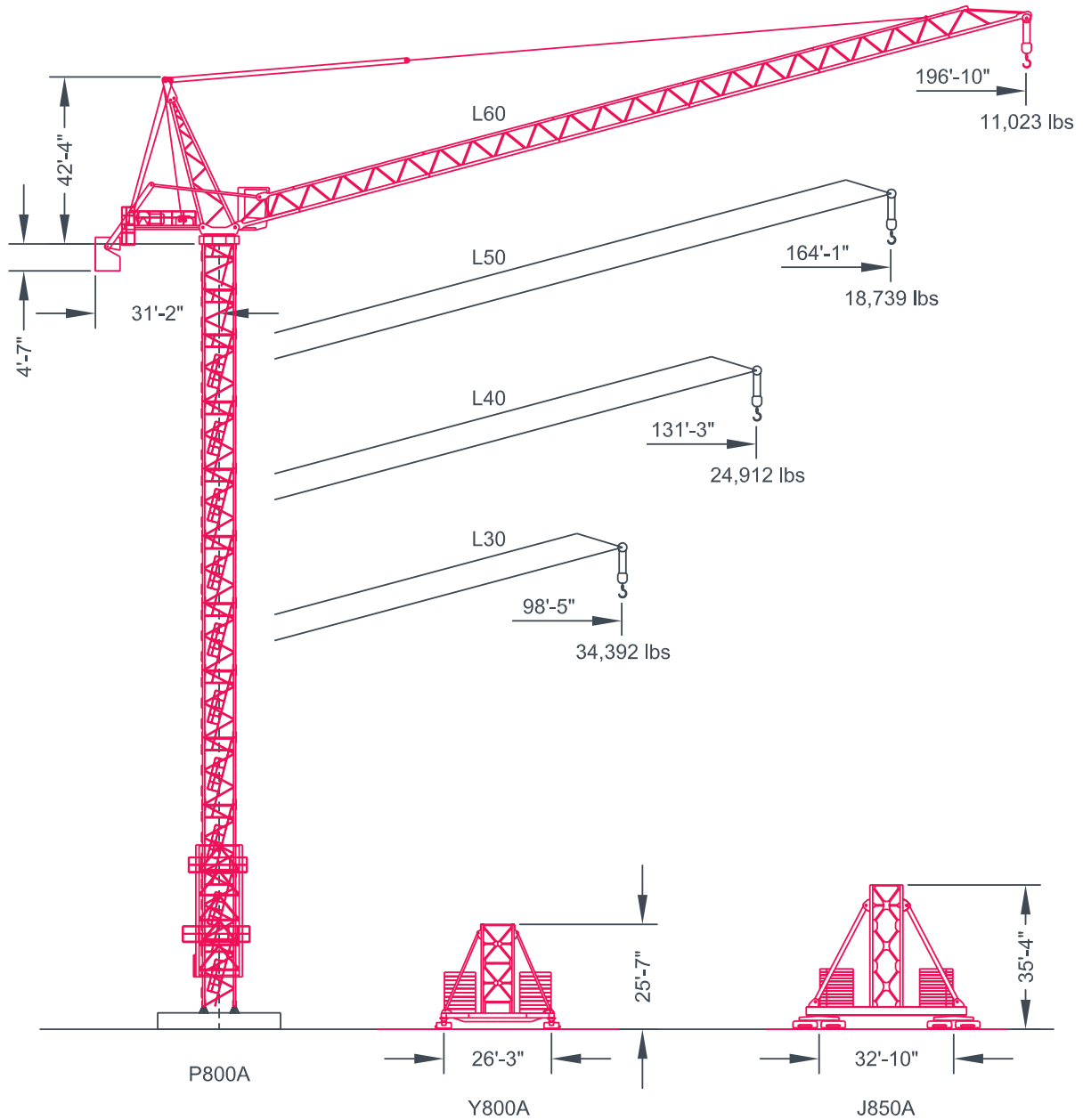


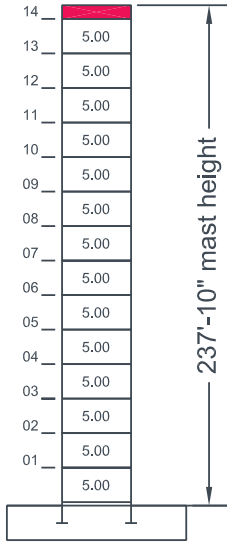
Maximum Capacity = 52,911 lbs



F.E.M. 1.001

Maximum Free-Standing Mast Heights

L30 Jib



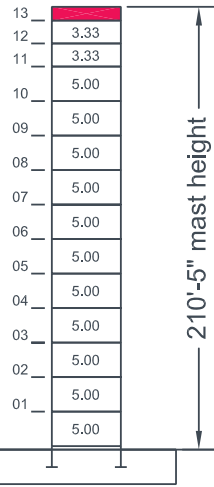
P800A

L40 Jib



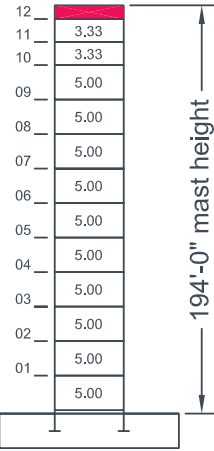
P800A

L50 Jib



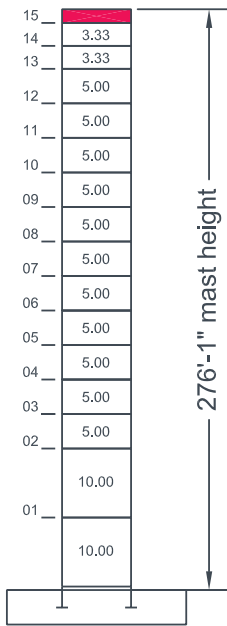
P800A

L60 Jib



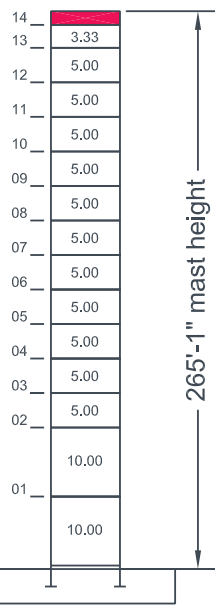
P800A

L30 Jib



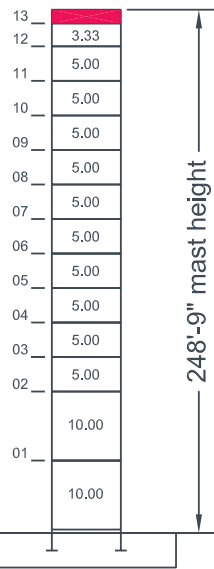
P850A

L40 Jib



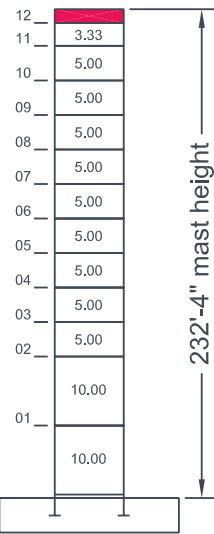
P850A

L50 Jib



P850A

L60 Jib



P850A

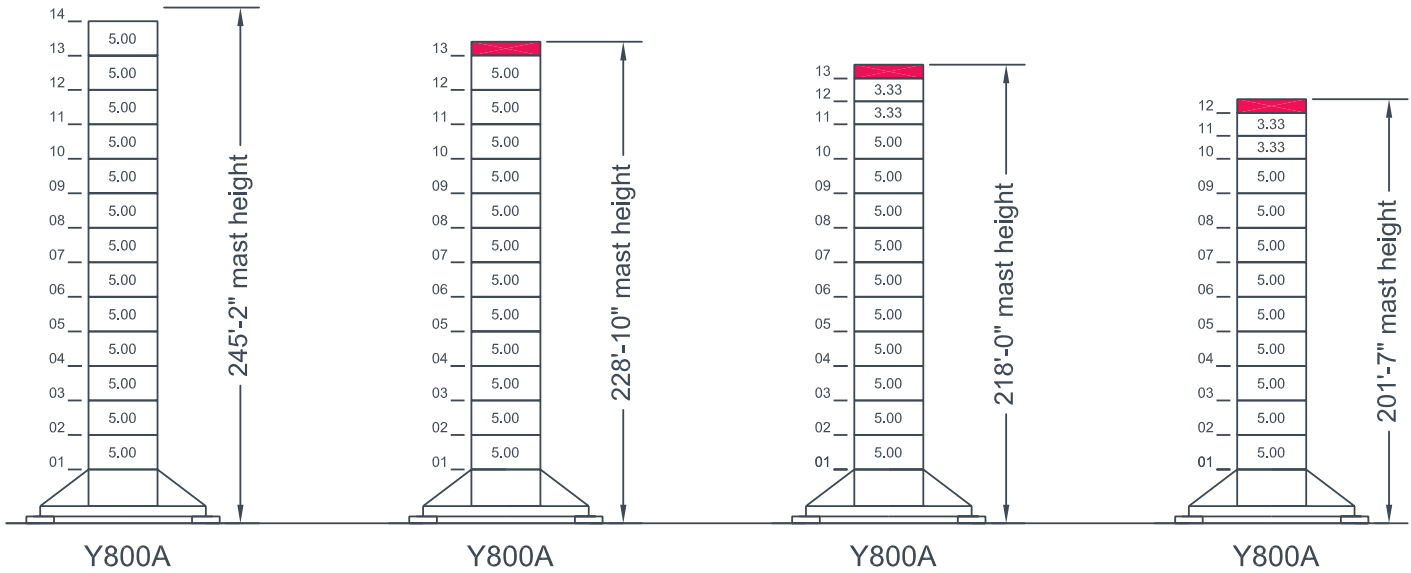
Maximum Free-Standing Mast Heights

L30 Jib

L40 Jib

L50 Jib

L60 Jib

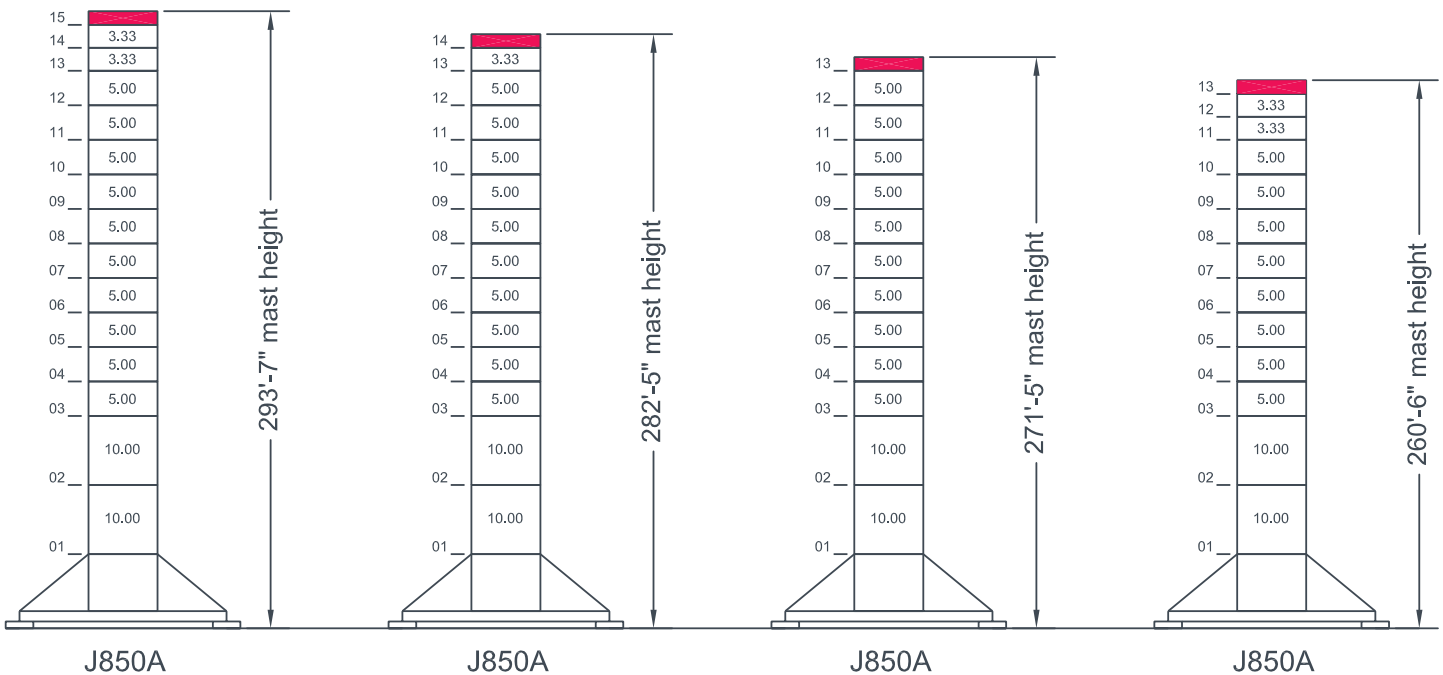


L30 Jib

L40 Jib

L50 Jib

L60 Jib

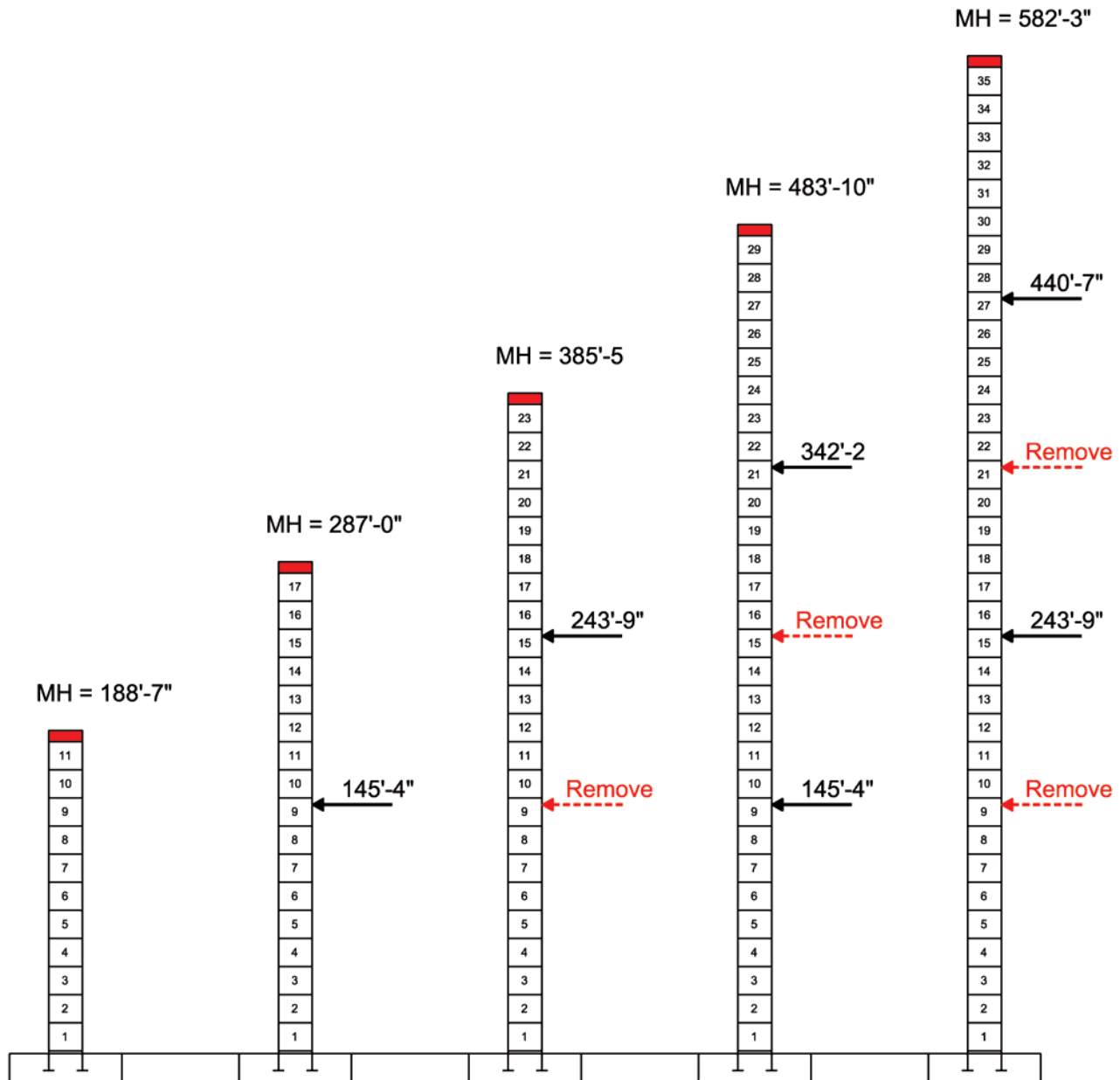


Climb Schedule Using Standard KR839 Mast

Jib Configurations: L30 thru L60 (98'-5" thru 196'-10")

P800A Foundation Anchors

This panel is 7.625"

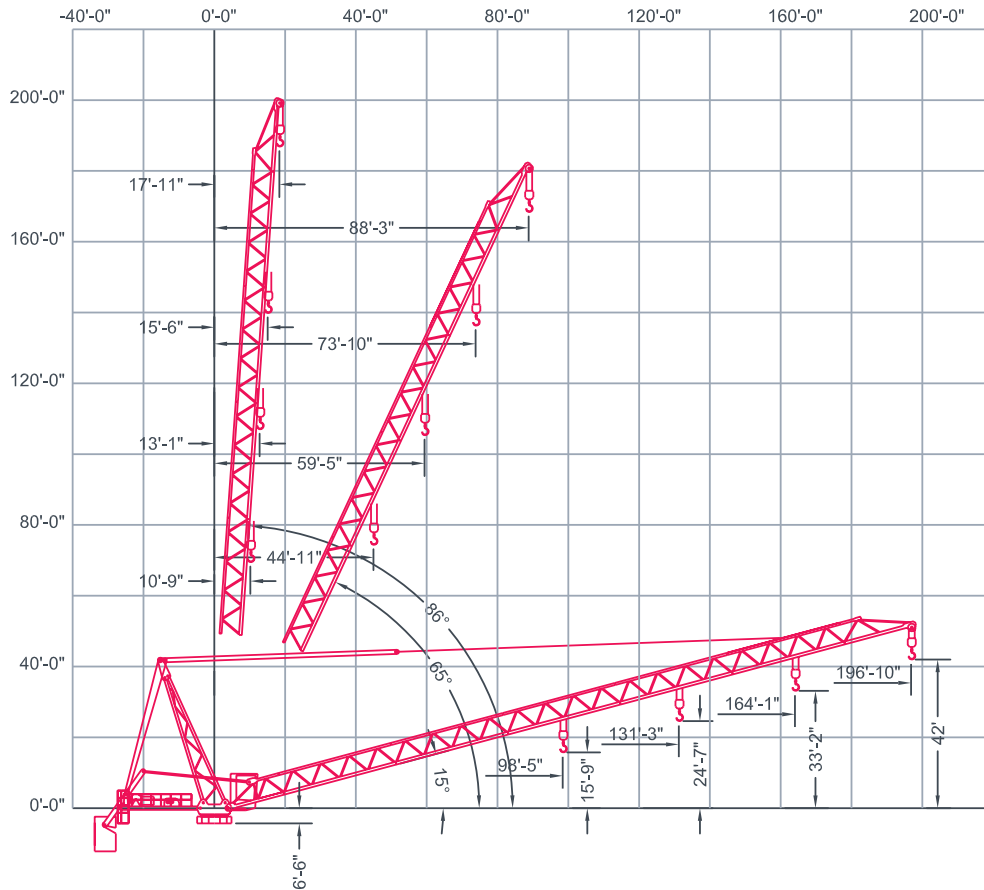


Rated Load Chart

| Hook Radius | Capacity (lbs) | | | |
|-------------|----------------|---------|---------|---------------|
| | Jib Lengths | | | |
| | 196'-10" | 164'-1" | 131'-3" | 98'-5" |
| 20'-0" | 26,455 | 39,683 | 52,910 | 52,910 |
| 30'-0" | 26,455 | 39,683 | 52,910 | 52,910 |
| 40'-0" | 26,455 | 39,683 | 52,910 | 52,910 |
| 50'-0" | 26,455 | 39,683 | 52,910 | 52,910 |
| 60'-0" | 26,455 | 39,683 | 52,910 | 52,910 |
| 70'-0" | 26,455 | 39,683 | 46,442 | 49,387 |
| 80'-0" | 26,455 | 38,376 | 40,320 | 42,897 |
| 90'-0" | 25,615 | 33,830 | 35,558 | 37,849 |
| 98'-5" | 23,314 | 30,717 | 32,297 | 34,392 |
| 100'-0" | 22,927 | 30,194 | 31,749 | |
| 110'-0" | 20,727 | 27,218 | 28,632 | |
| 120'-0" | 18,894 | 26,082 | 26,455 | |
| 130'-0" | 17,343 | 23,978 | 25,160 | |
| 131'-3" | 17,168 | 23,741 | 24,912 | |
| 140'-0" | 16,014 | 22,175 | | |
| 150'-0" | 14,862 | 20,612 | | |
| 160'-0" | 13,854 | 19,245 | | |
| 164'-1" | 13,481 | 18,739 | | |
| 170'-0" | 12,964 | | | |
| 180'-0" | 12,174 | | | |
| 190'-0" | 11,466 | | | |
| 196'-10" | 11,023 | | | |

| Max. Load Radius | | | | |
|------------------|---------|--------|---------|--------|
| From | 17'-11" | 15'-6" | 13'-1" | 10'-9" |
| To | 87'-3" | 77'-6" | 61'-10" | 65'-7" |

Note:
Red line indicates the division between 1-part line and 2-part line.



MR 415-H24

Manitowoc
Crane Group

This panel is 7.625"

Mechanical Data

| Function | Hoist Type | Speed vs Weight | 1-part | | | | 2-part | | | | Motor (hp) | Motor (kW) | Rope Length (ft) |
|----------|------------|-----------------|---------------|---------------|--------------|--------------|---------------|---------------|---------------|---------------|------------|------------|------------------|
| | | | 1st Gear | 2nd Gear | 3rd Gear | 4th Gear | 1st Gear | 2nd Gear | 3rd Gear | 4th Gear | | | |
| Hoist | 215 LBR 60 | ft/min lbs | 211 26,455 | 334 16,094 | 532 9,480 | 845 5,181 | 105 52,911 | 167 33,069 | 266 19,621 | 422 11,023 | 215 | 158 | 1,903 |
| Boom | 150 VBR | 15° to 86° | 1 min 16 sec | | | | | | | | 145 | 108 | |
| Swing | R - 10.5 | rpm | 0.80 | | | | | | | | 2 x 7.1 | 2 x 5.3 | |

Power Requirements: 480 V (+6% or -10%) 60 Hz measured at turn table.

Amperage: 215 LBR 60: 434 Amp (3 phase service with ground)

Note: Values given under "Rope Length" are for drum spooling capacity only.

Manitowoc Crane Group - Americas

Shady Grove, Pennsylvania Facility
 1565 Buchanan Trail East
 Shady Grove, PA 17256-0021, USA
 Tel: [Int + 001] 717 597 8121
 Fax: [Int + 001] 717 597 4062

MR 415-H24

