



Altec LMAP System

RECOMMENDED FEATURES

- Wheel Chocks
- Outrigger Pads
- Fall Protection System (with platform)
- Radio Remote Control (with platform)
- Platform Test Lift Package (with platform)

OPTIONS

- 1-Piece 26 ft (7.9 m) Jib
- 2-Piece 44 ft (13.4 m) jib, 26 ft (13.4 m) Retracted
- 2-Man Steel Platform
- 370 Degree Non-Continuous Rotation
- Continuous Rotation
- 12,000 lb (5,443 kg) 2 Speed Winch
- Hydraulic Tool Circuit at Tail Shelf
- Hydraulic Tool Circuit at Boom Tip
- Rotation Resistant Wire Rope
- Winch Control at Load Hook Stow Point
- Hydraulic Oil Cooling System

STANDARD SAFETY FEATURES

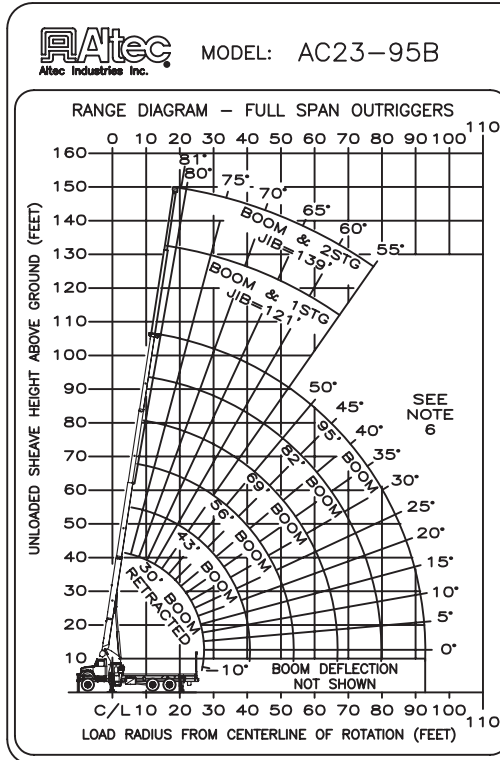
- Altec LMAP (Load Moment & Area Protection) System
 - Rated Capacity Limiter
 - Displays: Boom Length, Boom Angle, Load on Hook, Percent of Rated Capacity
 - Electronic Working Area Definition
 - Operator Defined Audible Alarm Set-Points for Boom Angle, Length and Rotational Position
- Outrigger Boom Interlock System
- Outrigger Motion Alarm
- Back-Up Alarm
- Emergency Stop at Operator Controls
- Winch Drum Rotation Indicator
- Anti-Two Block Device
- Front Bumper Outrigger
- Walk-Through Control Stations

CRANE SPECIFICATIONS

- 47,000 lb (21,319 kg) Maximum Lifting Capacity
- 95 ft (29 m) 4-Section Boom
- 105 ft (32 m) Maximum Sheave Height
- Stowed Travel Height of 13.25 ft (4.04 m)
- Vehicle Travel Length of 39.9 ft (12.1 m)
- 3 Position Out-and-Down Outriggers
 - Full Span 18.5 ft (5.6 m)
 - Mid Span 14 ft (4.3 m)
 - Short Span 9 ft (2.7 m)
- Hydraulic Pilot-Operated Control System
- 12,000 lb (5,443 kg) Winch w/ Burst of Speed

UNIT		RECOMMENDED CHASSIS DIM				MINIMUM RECOMMENDED CHASSIS SPECIFICATION				
Model	Rear Axle	CT (in)	WB (in)	AF (in)	AS (in)	Front Axle Rating (lbs)	Rear Axle Rating (lbs)	GVWR (lbs)	Frame Sec Modulus (in ³)	Frame RBM (in-lb)
AC23	Tandem	193	262	127	54	16,000	34,000	50,000	21.4	2,354,000

Altec AC23-95B Capacities



BOOM LOAD CAPACITIES IN LBS. WITH FULL SPAN OUTRIGGERS

LOAD RADIUS (FT)	30 FT BOOM	43 FT BOOM	56 FT BOOM	69 FT BOOM	82 FT BOOM	95 FT BOOM
5	77 47000					
8	71 36800	77 17600				
10	66 30900	74 17800	78 17500			
12	62 26100	71 18000	76 17600			
14	57 22200	68 18200	74 17700	78 17400		
16	52 19100	65 18500	72 17900	76 16100	79 13900	
18	47 17600	62 18000	70 18100	75 14900	78 12900	80 10000
20	41 15400	59 15800	68 16000	73 13900	76 12000	79 10000
25	19 11400	51 11900	62 12100	68 11600	73 10100	76 8800
30		42 9300	56 9500	64 9700	69 8300	73 7600
35		30 7400	49 7600	59 7800	65 7000	70 6400
40			42 8100	54 8250	61 6100	66 5500
45			33 4800	48 4950	57 5050	63 4800
50			20 3800	42 4000	52 4100	59 4150
55				35 3200	47 3300	55 3400
60				26 2600	42 2700	51 2750
65				11 2100	36 2200	47 2250
70					29 1750	42 1850
75					20 1400	37 1500
80						32 1150
85						24 900
90						14 675
0	8000	4900	3100	2000	1150	575
	825	550	425	350	300	250

NOTE: RATINGS ABOVE THE HEAVY LINE ARE BASED ON STRUCTURAL COMPETENCE AND NOT ON MACHINE STABILITY.

AREA OF OPERATION

DO NOT WORK IN THIS AREA WITHOUT FRONT BUMPER OUTRIGGER DEPLOYED

18 FT 6 IN FULL SPAN MAIN & AUX

360° CAPACITY WORKING AREA AVAILABLE ONLY WITH FRONT BUMPER OUTRIGGER

DEDUCTIONS FROM RATED LOADS FOR HANDLING DEVICES

OVERHAUL BALL: 180 LBS

1-SHEAVE LOADBLOCK: 230 LBS

2-SHEAVE LOADBLOCK: 365 LBS

0° BOOM CAPACITIES

STOWED JIB LOAD DEDUCTIONS

970162004 C (SHEET 1)

DEPLOYED JIB LOAD CAPACITIES (LBS) FOR ALL BOOM LENGTHS

JIB CAPACITIES ARE FOR FULL SPAN OUTRIGGERS (18 FT 6 IN CENTER TO CENTER)

LOADED BOOM ANGLE	55° *	60°	65°	70°	75°	80°
RETRACTED 26 FT JIB	775	1450	2250	3100	4100	4100
EXTENDED 44 FT JIB	550	1125	1550	2050	2550	2550

* DO NOT OPERATE JIB BELOW THIS ANGLE UNLESS BOOM IS FULLY RETRACTED. SEE NOTE 6.

OPERATOR AIDS MUST BE IN GOOD OPERATING CONDITION BEFORE OPERATING CRANE. REFER TO OWNERS MANUAL. KEEP AT LEAST 3 WRAPS OF LOADLINE ON DRUM AT ALL TIMES. USE ONLY 9/16" (1.47 cm) DIAMETER IWRC OR ROTATION RESISTANT WIRE ROPE WITH 37,000 LBS (16,782 KG) MIN. BREAKING STRENGTH ON THIS MACHINE.		1 PART LOAD LINE	2 PART LOAD LINE	3 PART LOAD LINE	4 PART LOAD LINE	5 PART LOAD LINE	6 PART LOAD LINE
		LOADS UP TO	LOADS UP TO	LOADS UP TO	LOADS UP TO	LOADS UP TO	LOADS UP TO
IWRC XXIP WIRE ROPE (LBS)		10,571 lbs	21,142 lbs	31,713 lbs	42,284 lbs	52,855 lbs	60,000 lbs
IWRC XXIP WIRE ROPE (KG)		4,795 kg	9,590 kg	14,385 kg	19,180 kg	23,975 kg	27,216 kg
ROTATION RESISTANT WIRE ROPE (LBS)		7,400 lbs	14,800 lbs	22,200 lbs	29,600 lbs	37,000 lbs	44,400 lbs
ROTATION RESISTANT WIRE ROPE (KG)		3,356 kg	6,713 kg	10,069 kg	13,426 kg	16,783 kg	20,140 kg
MAXIMUM BOOM LENGTH AT MAXIMUM ELEVATION WITH RIGGING SHOWN TO REACH THE GROUND (FT)		103 FT BOOM + 44 FT JIB	103 FT BOOM	74 FT BOOM	56 FT BOOM	45 FT BOOM	37 FT BOOM
MAXIMUM BOOM LENGTH AT MAXIMUM ELEVATION WITH RIGGING SHOWN TO REACH THE GROUND (M)		32 m BOOM + 13 m JIB	32 m BOOM	23 m BOOM	17 m BOOM	13 m BOOM	11 m BOOM
		LIFTS AND SPEEDS (ENGLISH UNITS)					
9/16" (1.4cm) DIAMETER IWRC XXIP CABLE SUPPLIED	STANDARD PLANETARY WINCH HIGH SPEED	4,620 LBS. 249 FT/MIN	9,240 LBS. 124 FT/MIN	13,860 LBS. 83 FT/MIN	18,480 LBS. 62 FT/MIN	23,100 LBS. 50 FT/MIN	27,720 LBS. 42 FT/MIN
	STANDARD PLANETARY WINCH LOW SPEED	9,880 LBS. 115 FT/MIN	19,760 LBS. 58 FT/MIN	29,640 LBS. 38 FT/MIN	39,520 LBS. 29 FT/MIN	49,400 LBS. 23 FT/MIN	59,280 LBS. 19 FT/MIN
		LIFTS AND SPEEDS (METRIC UNITS)					
9/16" (1.4cm) DIAMETER IWRC XXIP CABLE SUPPLIED	STANDARD PLANETARY WINCH HIGH SPEED	2,096 kg 1.26 m/s	4,272 kg .63 m/s	6,287 kg .42 m/s	8,382 kg .37 m/s	10,477 kg .264 m/s	12,573 kg .21 m/s
	STANDARD PLANETARY WINCH LOW SPEED	4,481 kg .58 m/s	8,963 kg .30 m/s	13,444 kg .19 m/s	17,925 kg .15 m/s	22,407 kg .12 m/s	26,888 kg .09 m/s

ALL WINCH PULLS AND SPEEDS IN THIS CHART ARE SHOWN ON THE 3RD LAYER. WINCH LINE PULLS WOULD INCREASE ON THE FIRST AND SECOND LAYERS. WINCH LINE SPEED WOULD DECREASE ON THE FIRST AND SECOND LAYERS. WINCH LINE PULLS MAY BE LIMITED BY THE WINCH CAPACITY OF 8,390 LBS (3,806 KG) FULL DRUM OR ANSI CABLE SAFETY LIMITS SHOWN IN CHART FOR IWRC XXIP AND ROTATION RESISTANT WIRE ROPES.

Winch Specifications

Altec Cranes are supported by service centers and over 115 mobile service technicians positioned across North America, seven days a week, 24 hours a day.

United States:

Alabama Service Center
1730 Vanderbilt Road
Birmingham, AL 35234

Arizona Service Center
2420 South 16th Avenue
Phoenix, AZ 85007

California Service Center (Northern)
325 Industrial Way
Dixon, CA 95620

California Service Center (Southern)
2882 Pomona Boulevard
Pomona, CA 91766

Colorado Service Center
641 Telluride Street
Aurora, CO 80011

Florida Service Center
2570 Old Okeechobee Road
West Palm Beach, FL 33409

Georgia Service Center
287 First Street
Forest Park, GA 30297

Indiana Service Center
5201 West 84th Street
Indianapolis, IN 46268

Kentucky Service Center
200 Altec Drive
Elizabethtown, KY 42701

Maryland Service Center
1434 Hughes Ford Road
Frederick, MD 21701

Massachusetts Service Center
28 Wales Street
Millbury, MA 01527

Missouri Service Center
2106 S. Riverside Road
St. Joseph, MO 64507

North Carolina Service Center
1550 Aerial Avenue
Creedmoor, NC 27522

Ohio Service Center
1236 Township Road 1175
Ashland, OH 44805

Oregon Service Center
13817 NE Sandy Boulevard
Portland, OR 97230

Pennsylvania Service Center
250 Laird Street
Plains, PA 18705

Texas Service Center
1001 Solon Road
Waxahachie, TX 75156

Virginia Service Center
325 South Center Drive
Daleville, VA 24083

Canada:

British Columbia Service Center
12352 84th Avenue
Surrey, BC V3W 0J5

Manitoba Service Center
57 Durand Road
Winnipeg, Manitoba R2J 3T1

Ontario Service Center
831 Nipissing Road
Milton, Ontario L9T 4Z4



Optional Recessed Load Block and Ball Storage



Walk Through Control Stations

Altec Industries, Inc.

325 South Center Drive
Daleville, VA 24083
1-540-992-5300