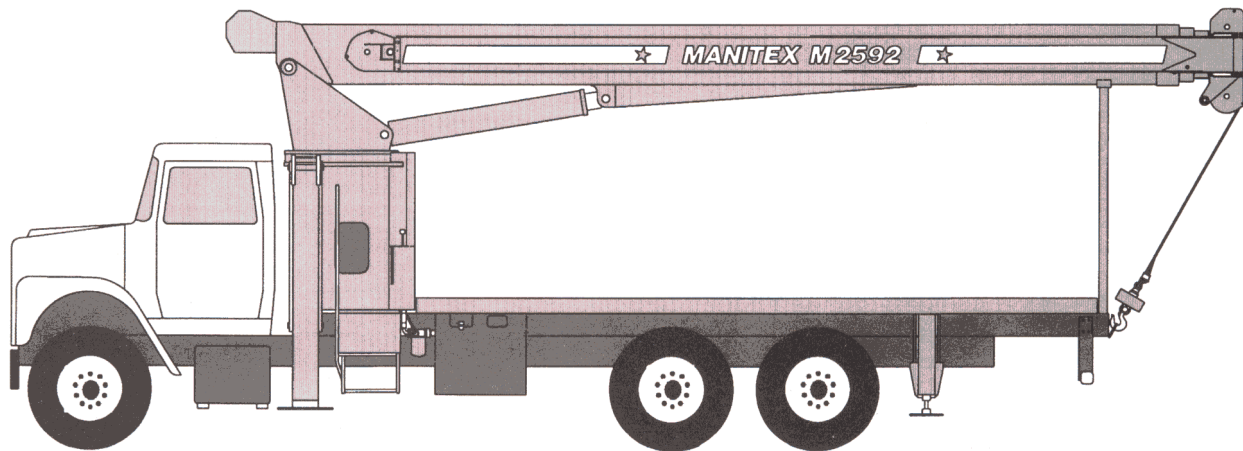




# Millennium Series™ M2500

## General Specifications



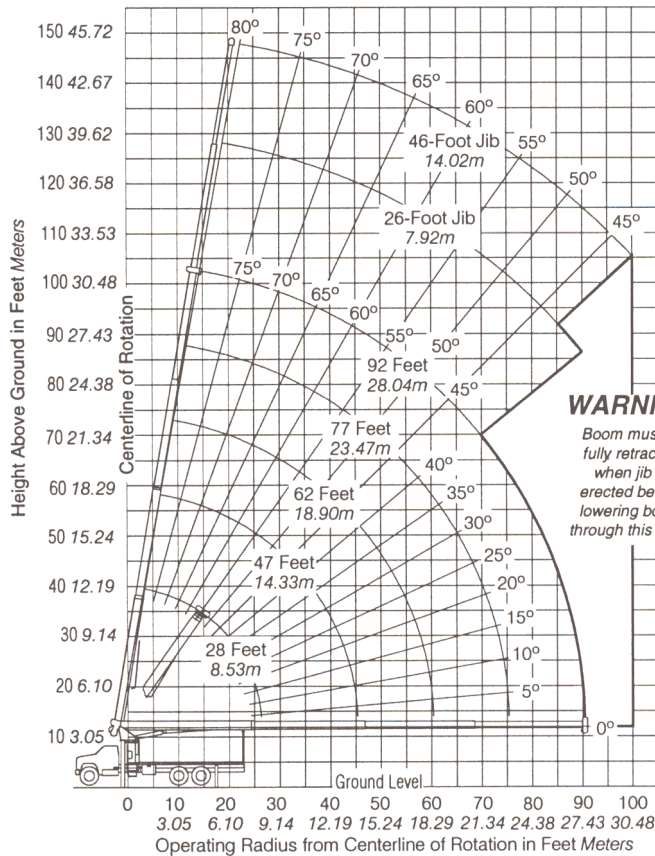
Model shown is M2592 with optional jib.

### STANDARD EQUIPMENT

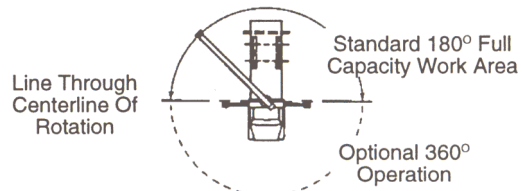
- **M2592** — 4-Section telescopic boom  
28' to 92' (8.53m to 28.04m).
- **M2571** — 3-Section telescopic boom  
28' to 71' (8.53m to 21.64m).
- 2-Speed planetary hoist.
- 5-Ton (4.5-mt) hook and ball.
- 3-Sheave boom point.
- Anti-two-block shutoff.
- Boom hoist cylinder.
- System pressure gauge.
- 70-Gallon (265-liter) hydraulic reservoir.
- Removable boom rest.
- Finish paint in Manitex colors.
- Engine start/stop.
- Operator/service/parts manuals.
- 300' (91.44m) of  $\frac{9}{16}$ " (14.3mm) EIPS IWRC wire rope.
- 372° Non-continuous rotation.
- Pedestal, turret, rotation bearing and swing system.
- Dual operator control stations.
- Load moment indicator - audio/visual.
- Audible outrigger/stabilizer motion alarm.
- Out-and-down rear stabilizers.
- A-frame link type outriggers.
- 3-Section vane type hydraulic pump.
- 20' (6.10m) Subframe.
- Signal horn.

**MODEL M2592**

**M2592 RANGE DIAGRAM**



**AREA OF OPERATION**



**ALLOWABLE LINE PULL**

1 PART LINE	2 PART LINE	3 PART LINE	4 PART LINE	5 PART LINE	6 PART LINE	<b>WARNING</b> Anti-Two-Block system must be in good operating condition before operating crane. Refer to Owner's Manual. Keep at least 3 wraps of load line on drum at all times.
						17000 lb 7711 kg
						25500 lb 11567 kg
						34000 lb 15422 kg
						42500 lb 19278 kg
						50000 lb 22680 kg
						7400 lb 3357 kg
						14800 lb 6713 kg
						22200 lb 10070 kg
						29600 lb 13426 kg
						37000 lb 16783 kg
						44400 lb 20140 kg
						3/16" (14.29mm) 6x25 IWRC (3.5:1 SF), 29750 lb (13494 kg) Minimum breaking strength. 3/16" (14.29mm) Rot resistant (5.0:1 SF), 37000 lb (16783 kg) Minimum breaking strength.

**WEIGHTS**

- Total crane, including hydraulic fluid.....20,300 lb .9,208 kg
- 26' (7.93m) Fixed length jib ..... 819 lb .... 372 kg
- 46' (14.02m) Telescopic jib..... 1,230 lb .... 558 kg
- 15-Ton (13.6-mt) single-sheave block.....263 lb .... 119 kg
- 25-Ton (22.7-mt) double-sheave block ..... 380 lb .... 172 kg
- Hanger sheave for 5- and 6-part line..... 38 lb ..... 17 kg
- 20'4" (6.20m) Steel or wood bed ..... 1,900 lb .... 862 kg

**DEDUCTIONS**

- Hanger Sheave ..... 50 lb ..... 23 kg
- Overhaul Ball..... 180 lb ..... 82 kg
- Single Sheave Load Block ..... 260 lb ..... 118 kg
- Double-Sheave Load Block..... 350 lb ..... 159 kg
- Triple-Sheave Load Block ..... 380 lb ..... 172 kg

- Hose Reel..... 140 lb ..... 64 kg
- Swing-Around Jib ..... See Load Rating Chart

**WARNING** Lifting off the main boom point while the swing-around jib is erected is not intended or approved.

Outriggers and stabilizers fully extended and machine level.

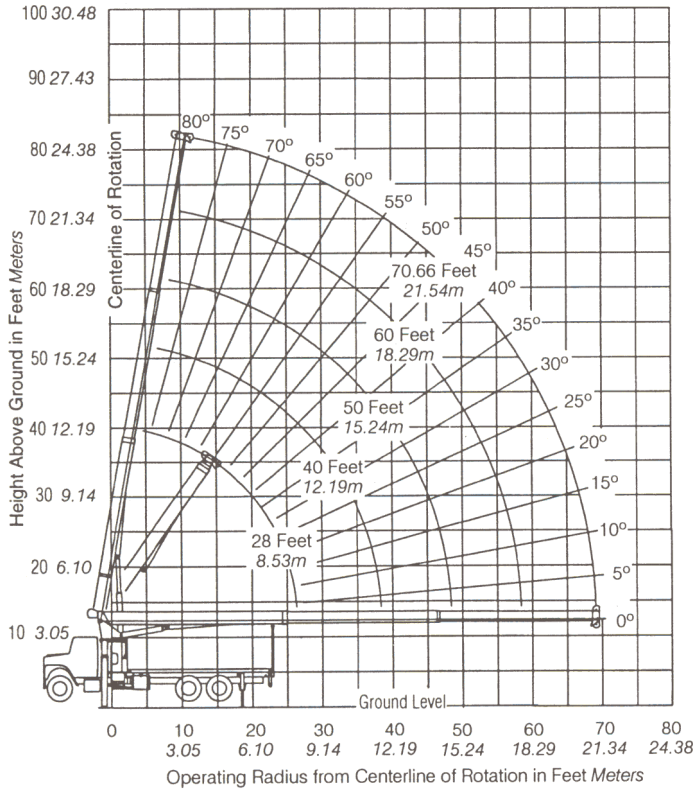
**M2592 LOAD RATING CHART**

Meets ANSI B30.5 Requirements.

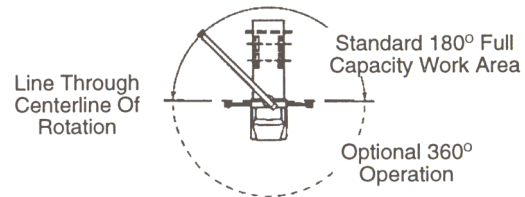
Operating Radius	BOOM LOAD RATINGS					JIB LOAD RATINGS													
	28 Feet 8.53 Meters		47 Feet 14.33 Meters		62 Feet 18.90 Meters		77 Feet 23.47 Meters		92 Feet 28.04 Meters		26 Foot 7.92 Meters			26 Foot 7.92 Meters			46 Foot 14.02 Meters		
Feet Meters	∠ lb kg	∠ lb kg	∠ lb kg	∠ lb kg	∠ lb kg	∠ lb kg	∠ lb kg	∠ lb kg	∠ lb kg	∠ lb kg	∠ lb kg	∠ lb kg	∠ lb kg	∠ lb kg	∠ lb kg	∠ lb kg	∠ lb kg		
<b>5</b> 1.52	79° 50,000 22,679										Fixed Jib			Telescopic Jib					
<b>8</b> 2.44	72° 37,800 17,145																		
<b>10</b> 3.05	68° 32,000 14,514	78° 20,500 9,298																	
<b>12</b> 3.66	63° 26,650 12,088	75° 20,500 9,298	79° 20,500 9,298																
<b>15</b> 4.57	56° 20,900 9,480	71° 20,500 9,298	77° 18,300 8,300	80° 15,000 6,803															
<b>20</b> 6.10	42° 15,000 6,803	65° 15,000 6,803	72° 14,800 6,713	76° 12,700 5,760	79° 9,900 4,490														
<b>25</b> 7.62	21° 11,300 5,125	58° 11,300 5,125	67° 11,300 5,125	72° 10,900 4,944	76° 8,680 3,937	79° 5,500 2,494	79° 5,300 2,404												
<b>30</b> 9.14		50° 9,170 4,159	62° 9,170 4,159	68° 9,170 4,159	73° 7,740 3,510	77° 5,000 2,267	77° 4,850 2,199	79° 3,400 1,542											
<b>35</b> 10.67		41° 7,400 3,356	56° 7,400 3,356	64° 7,400 3,356	70° 6,760 3,066	75° 4,610 2,091	75° 4,350 1,973	77° 3,300 1,496											
<b>40</b> 12.19		30° 6,050 2,744	50° 6,050 2,744	60° 6,050 2,744	66° 5,920 2,685	72° 4,160 1,886	72° 3,900 1,769	76° 3,200 1,451											
<b>45</b> 13.72			43° 5,000 2,267	55° 5,000 2,267	63° 5,000 2,267	70° 3,750 1,700	70° 3,480 1,578	74° 3,040 1,378											
<b>50</b> 15.24			36° 4,190 1,900	50° 4,190 1,900	59° 4,190 1,900	67° 3,380 1,533	67° 3,110 1,410	72° 2,780 1,260											
<b>55</b> 16.76				26° 3,400 1,542	45° 3,400 1,542	55° 3,400 1,542	65° 3,070 1,392	65° 2,800 1,270	69° 2,520 1,143										
<b>60</b> 18.29					39° 2,830 1,283	51° 2,830 1,283	62° 2,790 1,265	62° 2,500 1,133	67° 2,280 1,034										
<b>65</b> 19.81					32° 2,310 1,047	46° 2,310 1,047	59° 2,480 1,124	59° 2,190 993	65° 2,070 938										
<b>70</b> 21.34						24° 1,880 852	42° 1,880 852	56° 2,040 925	56° 1,750 793	62° 1,880 852									
<b>75</b> 22.86							36° 1,550 703	53° 1,670 757	53° 1,380 625	60° 1,710 775									
<b>80</b> 24.38								30° 1,240 562	49° 1,350 612	49° 1,060 480	58° 1,520 689								
<b>85</b> 25.91									22° 970 439	46° 1,080 489	46° 780 353	55° 1,240 562							
<b>90</b> 27.43										42° 840 381	42° 540 244	52° 990 449							
<b>95</b> 28.96												49° 780 353							
<b>100</b> 30.48													46° 580 263						
		Do not operate crane or accessories within 10' (3.05m) of live power lines.																	
		460 209	270 123	210 95	170 77	140 64	Deductions for stowed fixed jib												
		690 313	410 186	310 141	250 113	210 95	Deductions for stowed telescopic jib												
7300035-001																			

**MODEL M2571**

**M2571 RANGE DIAGRAM**



**AREA OF OPERATION**



ALLOWABLE LINE PULL						<b>WARNING</b> Anti-Two-Block system must be in good operating condition before operating crane. Refer to Owner's Manual. Keep at least 3 wraps of load line on drum at all times.
1 PART LINE	2 PART LINE	3 PART LINE	4 PART LINE	5 PART LINE	6 PART LINE	
						3/16" (14.29mm) 6x25 IWRC (3.5:1 SF), 29750 lb 13494 kg Minimum breaking strength.  3/16" (14.29mm) Rot resistant (5.0:1 SF), 37000 lb 16783 kg Minimum breaking strength.
8500 lb 3856 kg	17000 lb 7711 kg	25500 lb 11567 kg	34000 lb 15422 kg	42500 lb 19278 kg	50000 lb 22680 kg	
7400 lb 3357 kg	14800 lb 6713 kg	22200 lb 10070 kg	29600 lb 13426 kg	37000 lb 16783 kg	44400 lb 20140 kg	

**WEIGHTS**

Total crane, including hydraulic fluid..... 18,850 lb..... 8,850 kg  
 15-Ton (13.6-mt) single-sheave block ..... 263 lb..... 119 kg  
 25-Ton (22.7-mt) double-sheave block ..... 380 lb..... 172 kg  
 Hanger sheave for 5- and 6-part line ..... 38 lb..... 17 kg  
 20'4" (6.20m) Steel or wood bed ..... 1,900 lb..... 862 kg

**DEDUCTIONS**

Hanger Sheave ..... 50 lb ..... 23 kg	Double-Sheave Load Block ..... 350 lb ..... 159 kg
Overhaul Ball..... 120 lb ..... 54 kg	Triple-Sheave Load Block ..... 380 lb ..... 172 kg
Single Sheave Load Block ..... 260 lb ..... 118 kg	Hose Reel..... 140 lb ..... 64 kg

Outriggers and stabilizers fully extended and machine level.

**M2571 LOAD RATING CHART**

Meets ANSI B30.5 Requirements.

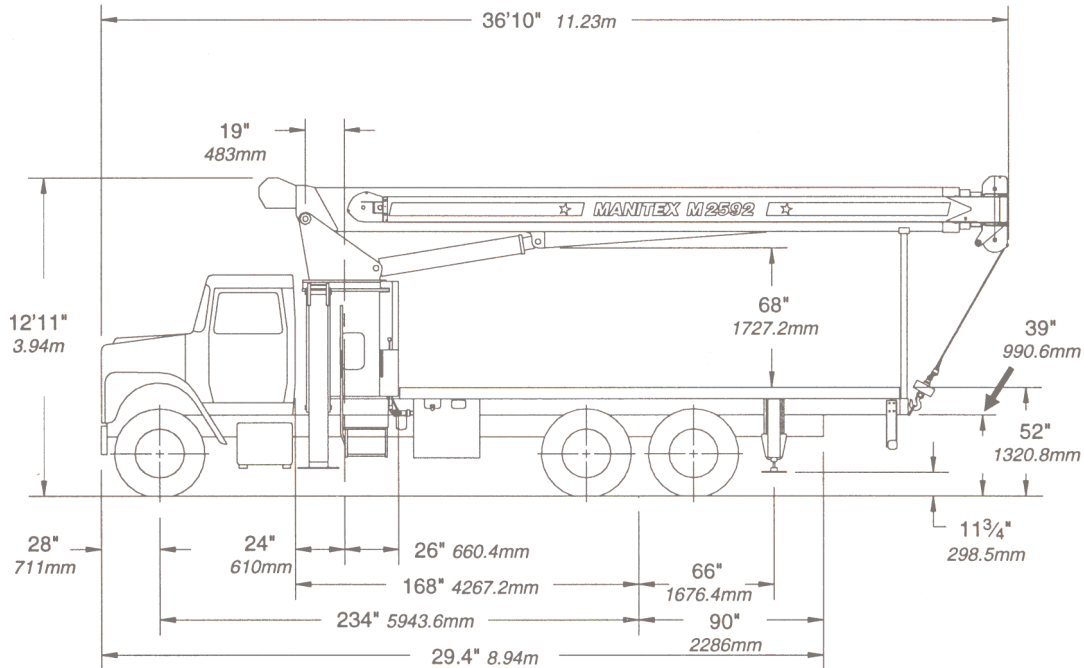
Operating Radius		BOOM LOAD RATINGS														
		28 Feet 8.53 Meters		40 Feet 12.19 Meters		50 Feet 15.24 Meters		60 Feet 18.29 Meters		70.66 Feet 51.54 Meters						
Feet	Meters	∠	lb	kg	∠	lb	kg	∠	lb	kg	∠	lb	kg	∠	lb	kg
5	1.52	79°	50,000	22,680												
8	2.44	72°	38,520	17,472	78°	35,600	16,148									
10	3.05	68°	32,660	14,814	75°	30,120	13,662	79°	28,390	12,877						
12	3.66	63°	27,430	12,442	72°	26,130	11,852	76°	24,660	11,186	79°	23,100	10,478			
15	4.57	56°	21,650	9,820	68°	21,650	9,820	73°	20,590	9,339	76°	19,350	8,777	79°	16,350	7,416
20	6.10	42°	15,700	7,121	59°	15,700	7,121	67°	15,700	7,121	71°	15,270	6,926	75°	13,630	6,182
25	7.62	21°	12,050	5,466	50°	12,050	5,466	60°	12,050	5,466	66°	12,050	5,466	70°	11,540	5,234
30	9.14				40°	9,750	4,423	53°	9,750	4,423	61°	9,750	4,423	66°	9,750	4,423
35	10.67				26°	7,970	3,615	45°	7,970	3,615	55°	7,970	3,615	61°	7,970	3,615
40	12.19							36°	6,700	3,039	48°	6,700	3,039	56°	6,700	3,039
45	13.72							23°	5,430	2,463	41°	5,430	2,463	51°	5,430	2,463
50	15.24										33°	4,480	2,032	46°	4,480	2,032
55	16.76										22°	3,700	1,678	39°	3,700	1,678
60	18.29													32°	3,120	1,415
65	19.81													22°	2,610	1,184

*This capacity chart is for reference use only and must not be used for a specific serial number crane.*

*All load ratings above the heavy line are based on machine structural competence and do not exceed 85% of tipping. Load ratings below are stability limited and do not exceed 85% of tipping.*

Do not operate crane or accessories within 10' (3.05m) of live power lines.

## M2500 OUTLINE DIMENSIONS



*These dimensions are general, not for Engineering. Some dimensions depend on truck selection. Dimensions shown on this page apply to both the M2592 and the M2571 models.*

### TRUCK CHASSIS DATA

#### Minimum Requirements for M2500 Series

Some configurations and options may increase requirements.

Wheelbase.....	234 In.	5,944mm
Cab to Axle.....	168 In.	4,267mm
Front axle gross weight rating.....	14,000 lb	6,350 kg
Rear axle gross weight rating.....	38,000 lb	17,237 kg
Frame Section Modulus.....	20.0 in. <sup>3</sup>	328cc
	110,000 psi	758,450 kPa
Nominal Frame Width.....	34 In.	864mm

