

# Mobile crane

# LTM 1130-5.1

**MAXIM**  
Crane Works, L.P.  
1-877-MAX-LIFT

Max. lifting capacity: 130 t  
Max. lifting height: 91 m  
Max. working radius: 72 m



maximcrane.com

# LIEBHERR

# Mobile Crane LTM 1130-5.1

## Flexible and economical to operate

maximcrane.com



The Liebherr LTM 1130-5.1 mobile crane is characterised by its long telescopic boom, strong lifting capacities, exceptional mobility and comprehensive comfort and safety equipment. This 130-tonner features top-of-the-range technology, making it even more effective in operation.

- 60-m telescopic boom
- 19-m folding fly-jib, hydraulically adjustable (option)
- 60-t overall weight, incl. 9-t ballast at 12-t axle load
- Vehicle width: 2.75 m with 16.00 R 25 tyres
- Great flexibility of use due to optimum lifting capacities with full and partial ballast
- Active, speed-dependent rear-axle steering
- Pneumatic disc brakes





#### Drivetrain

- Six-cylinder Liebherr turbo-diesel engine, 370 kW/503 hp at 1900 rpm, max. torque: 2355 Nm at 1200 – 1500 rpm
- Automated ZF AS-TRONIC gearbox, 12 forward and 2 reverse speeds
- ZF interarder directly at the gearbox
- 2-stage transfer case, 0.78 km/h crawling speed
- Axles two, four and five driven, axle one as option



# State-of-the-art chassis and drive technology

## High mobility and cost effectiveness

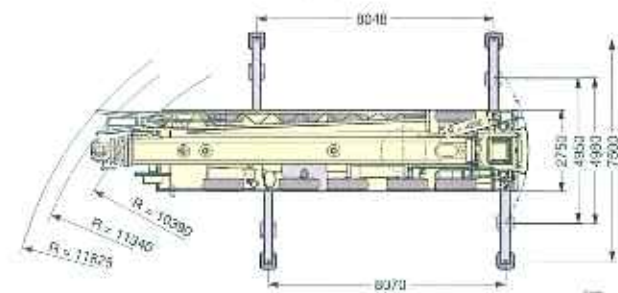
A powerful six-cylinder Liebherr turbo-diesel engine with 370 kW/503 hp ensures swift driving performance. The 12-speed ZF gearbox with automated AS-TRONIC control system provides a high level of cost effectiveness and excellent comfort.

- Reduced fuel consumption through large number of gears and the efficiency of the dry coupling
- Excellent manoeuvrability and minimum crawling speed thanks to two-stage transfer case
- Wear-free braking with ZF interarder

## Compact, agile and weight-optimised

Thanks to its extremely compact design, the LTM 1130-5.1 can operate on the smallest of construction sites. At an axle load of 12 t, it can drive with up to 9 t of ballast, making it flexible and economical to use.

- Chassis length only 12.3 m
- Smallest turning-circle radius only 10.4 m
- Vehicle width only 2.75 m, even with 16.00 R 25 tyres
- Ballast radius only 4.2 m



## Hydro-pneumatic suspension Niveaumatik

- Maintenance-free suspension cylinders
- Large dimensions to cope with axle loads of up to 40 t
- Suspension travel: +150/-100 mm
- High lateral stability when cornering
- Choice of driving state using fixed programmes



## Pneumatic disc brakes

- High braking power, improved control
- Improved directional stability
- No reduction in braking force at high braking temperatures (fading)
- Longer life
- Shorter labour times for changing the screening surfaces
- Brake pads with wear indicators



#### Five steering programmes

- Programme selection at the touch of a button
- Clear arrangement of control elements and displays
- Programmes can be switched while driving
- Crab steering controlled in comfort via the steering wheel; no lifting of the centre axle



# Variable steering concept



## Active rear-axle steering

The rear axles are actively electro-hydraulically controlled in accordance with the speed and steering angle of the front axles.

Five different steering programmes (P) can be selected at the touch of a button.

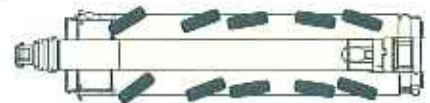
- Much-reduced tyre wear
- Improved manoeuvrability
- Stable driving behaviour even at high speeds
- All five axles can be steered

## High safety standards – entire know-how from Liebherr

- Centring cylinder for automatic straightening of rear axles in case of fault
- Two independent hydraulic circuits with wheel- and engine driven hydraulic pump
- Two independent control computers

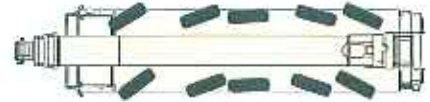
### P1 Road steering

Axles 1 and 2 are steered mechanically using the steering wheel. Axles 3, 4 and 5 are actively steered, depending on speed and the front axle lock angle. At speeds of 30 km/h and over, axles 3 and 4 are set to straight-ahead position and locked; at 60 km/h and over, axle 5 is locked in the same forward position.



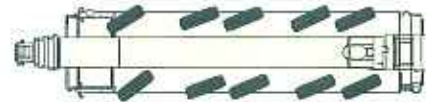
### P2 All-wheel steering

Using the steering wheel, axles 3, 4 and 5 are turned in accordance with the steering angle of axle 1 in such a way as to achieve the smallest possible turning radii.



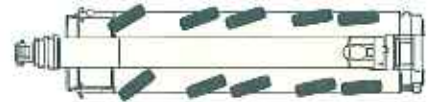
### P3 Crab steering

Axles 3, 4 and 5 are turned in the same direction as the wheel lock on axles 1 and 2 using the steering wheel.



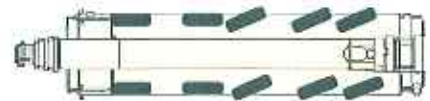
### P4 No swing-out steering

Axles 3, 4 and 5 are turned as a function of the wheel lock on axle 1 in such a way as to prevent the rear end swinging out.



### P5 Independent rear-axle steering

Axles 1 and 2 are turned using the steering wheel; axles 3, 4 and 5 are turned independent of the wheel lock on axles 1 and 2 using buttons, with the wheel lock on axle 3 being adjusted to the situation.



### Centring cylinder to straighten rear axles

- Automatic straightening of rear axles in case of fault



**The driver's cab**

- Corrosion-resistant, cataphoretic dip-primed steel
- Safety glass on all sides
- Tinted glass
- Electric windows
- Heated and electronically adjustable outside mirrors
- Air-sprung driver's seat with lumbar support

# Comfort and functionality

## Modern driver's cab and crane cab

Both the modern driver's cab and the crane cab that tilts backwards offer a comfortable and functional working environment. The control elements and displays are ergonomically arranged, thereby ensuring safe and fatigue-proof operation.

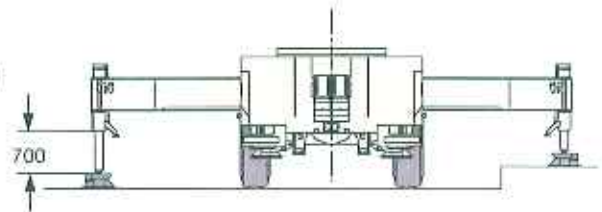
## Speedy and safe set-up

The outrigging, ballast assembly and attachment of additional equipment have all been designed with speed, safety and comfort in mind. Specific ascents, handholds and rails are provided to ensure the safety of operating staff.



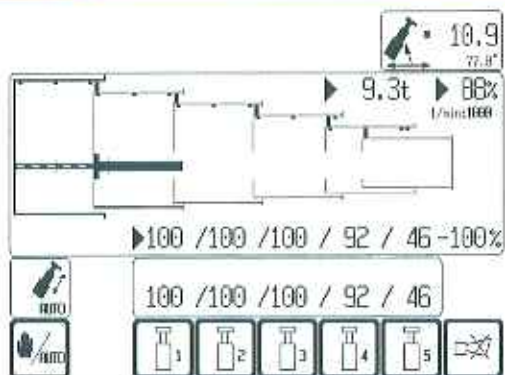
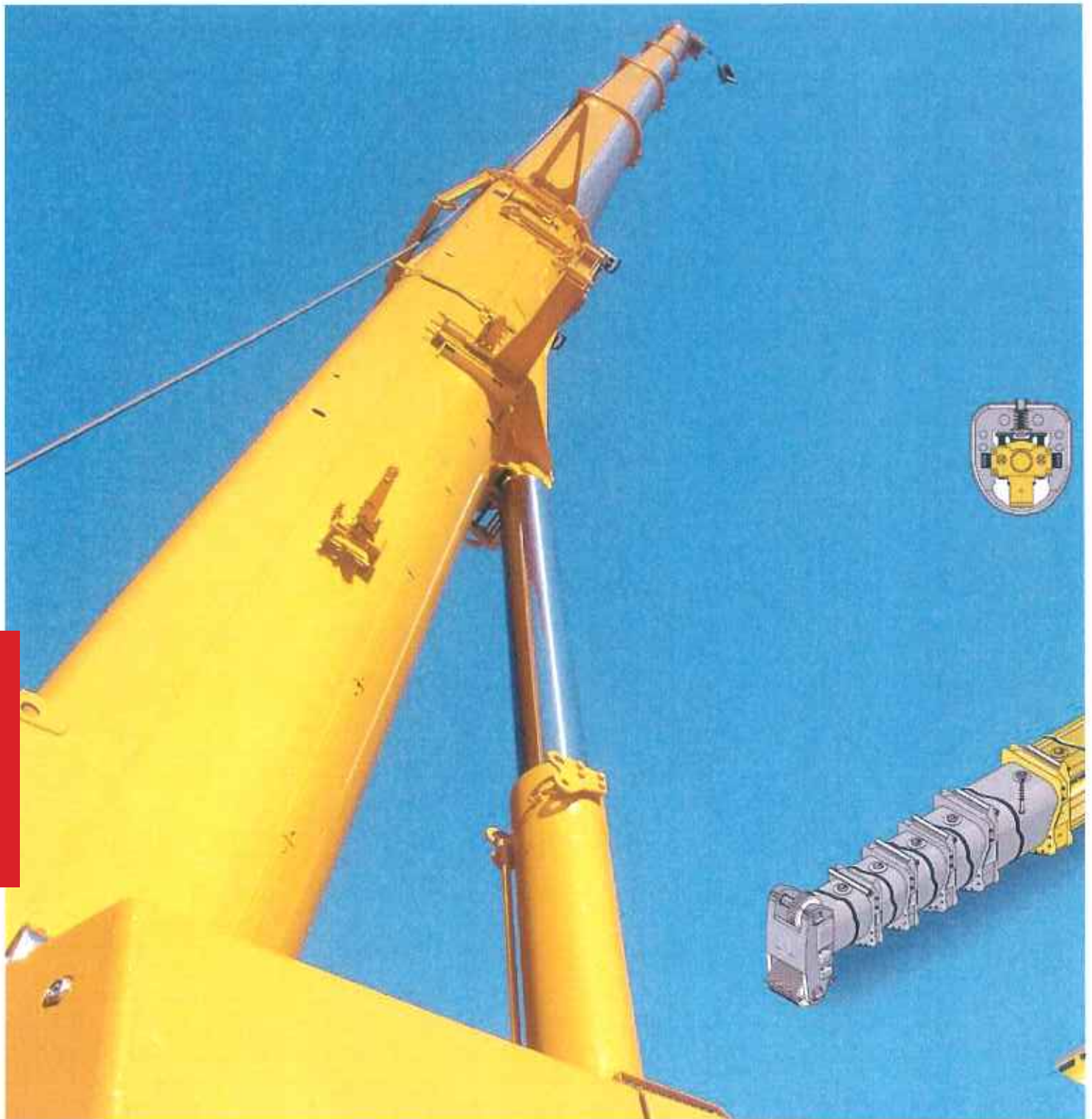
### Supporting crane on outriggers – quick, comfortable and safe

- Control panel with membrane keyboard and electronic incline display
- Fully automatic levelling at the touch of a button
- Engine start/stop and speed control
- Support area lighting with four integrated lights
- Support cylinder stroke: 650 mm front, 700 mm rear
- Two-stage outrigger beams, fully hydraulic, low-maintenance extension system



### The crane cab

- Corrosion-resistant, galvanised, powder-coated steel
- Safety glass on all sides
- Tinted glass, front wind screen can be opened
- Roof window made from armoured glass
- Operator's seat with lumbar support
- Step to pull out on side
- Can be tilted 20° backwards



**The fully automatic telescoping system „TELEMATIK“**

- Greater lifting capacities with longer booms and larger radii thanks to 'light' telescoping system
- One-stage hydraulic cylinder with hydraulically operated drive pin
- Maintenance-free telescoping system
- Fully automatic telescoping
- Easiest control and monitoring of telescoping action on LICCON screen



Assembly jib

# High lifting capacities and flexible boom system

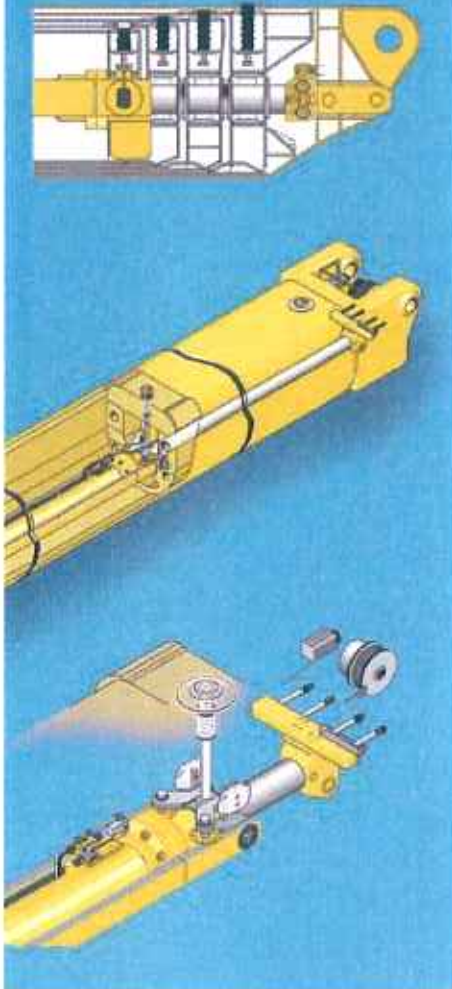
## High-capacity, long telescopic boom and functional lattice extensions

The telescopic boom comprises the base section and five telescopic sections which, with the thoroughly tried-and-tested TELEMATIK one-cylinder telescoping system, are conveniently and automatically extended and secured at the required length.

- 60-m telescopic boom
- 10.8-m to 19-m folding fly-jib, attachable at 0°, 20° and 40°
- Hydraulic adjustment of the folding jib between 0° and 40° (optional) at full load, interpolation of the loads
- Hydraulic assembly assistance for attaching the folding jib
- Two 7-m intermediate sections to extend the telescopic boom when using folding jib
- 2.9-m assembly jib
- Rooster sheave, swings away to the side

## High lifting capacities both with full and partial ballast offer a wide operational spectrum

- High lateral stability thanks to oval boom profile
- Optimised load capacities due to variety of extension variants
- Telescoping when loaded
- Lifting capacity: 10.5 t at 60 m lifting height
- Maximum hook height: 91 m
- Maximum radius: 72 m



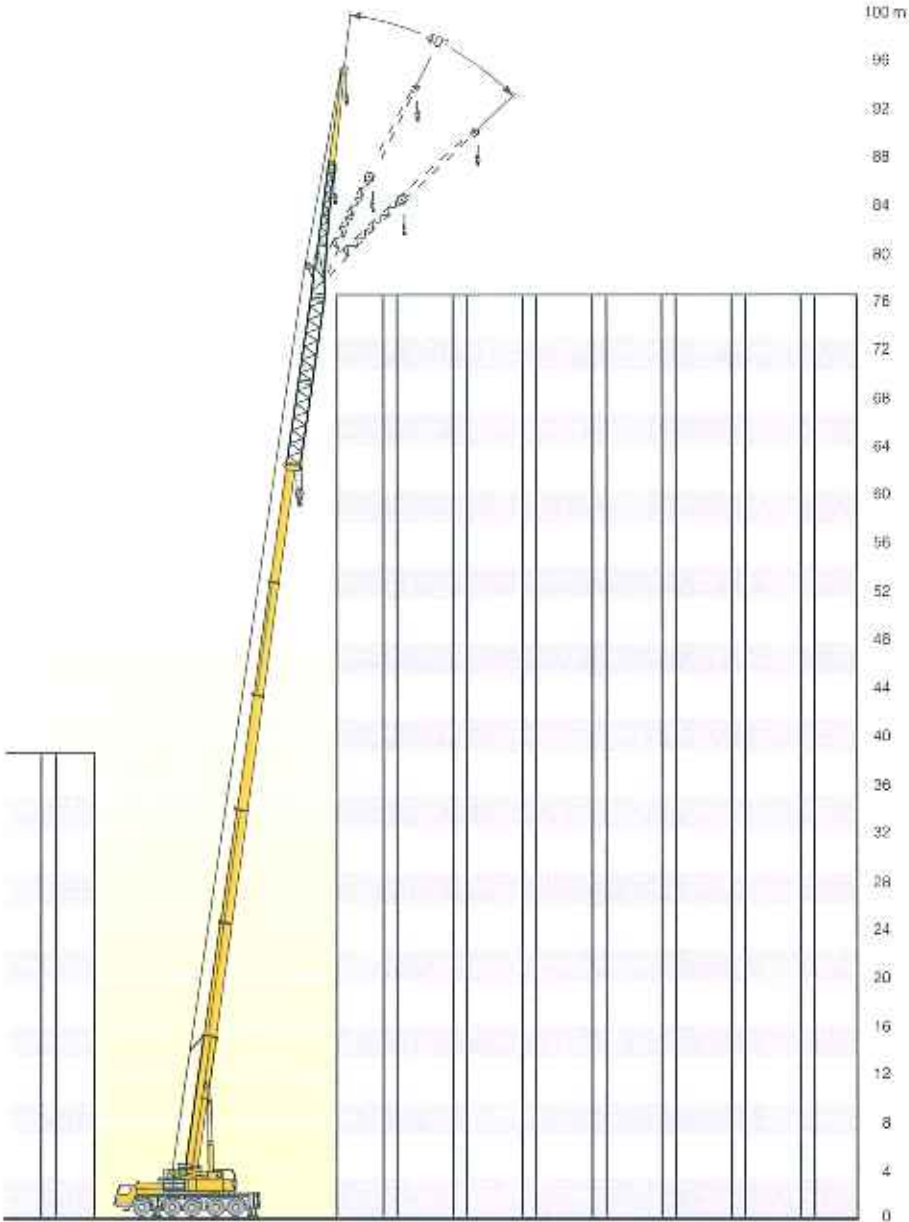
Rooster sheave



Hydraulic assembly assistance for attaching the folding jib



# Hydraulic folding jib



maximcrane.com



Hydraulically adjustable folding jib (0° to 40°)

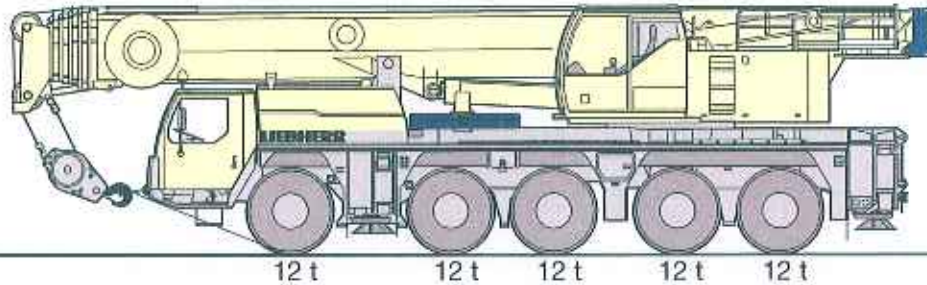
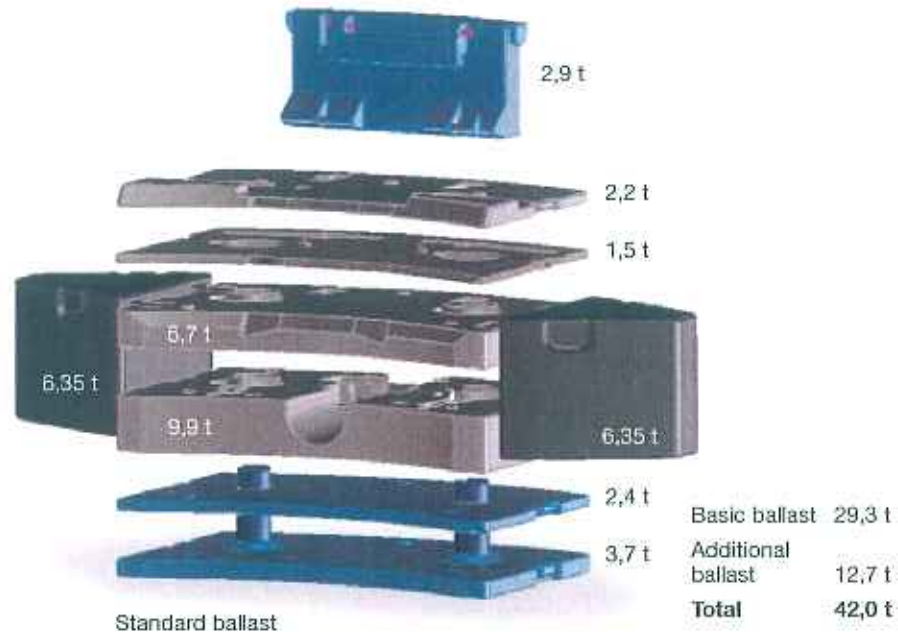


Hose reel for the hydraulic cylinder

# Variable counterweight

## Ballast assembly - in a matter of minutes

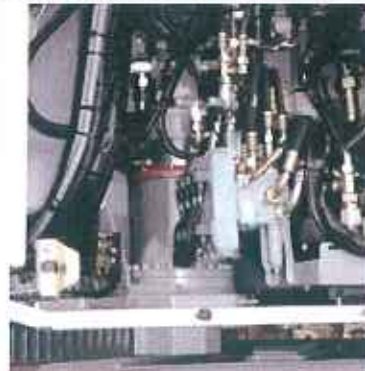
- Multiple ballast variations from 2.9 t to 42 t
- Rapid ballasting with keyhole technology from within the crane cab
- Compact ballast dimensions: with a 29.3-t ballast, the ballast width is only 2.73 m
- Ballast radius: only 4.2 m
- 60-t total weight incl. 9-t ballast at 12-t axle load





**The hoist gear**

- Liebherr hoisting winch with built-in planetary gearing and spring-loaded multi-disc brake
- Line pull: 88 kN at the outer layer
- Max. rope speed: 110 m/min

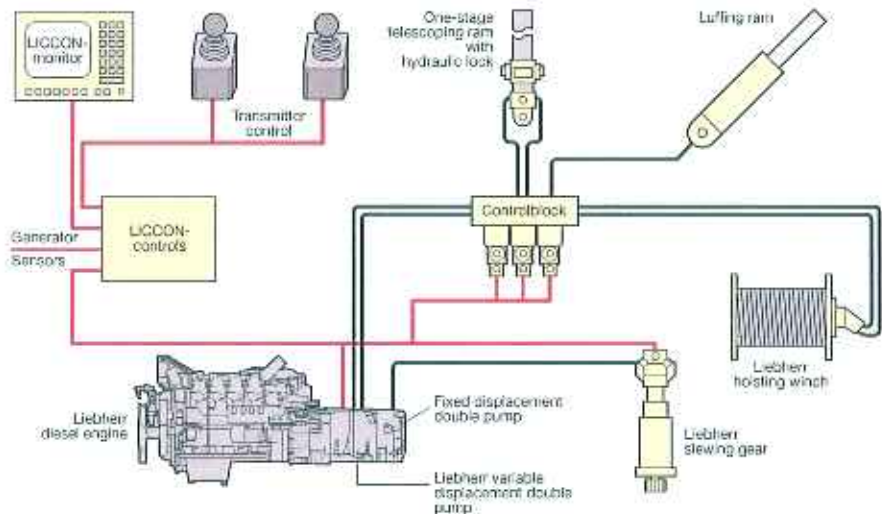


# High-power crane drive

## With tried-and-tested components

The drive components for crane operation are constructed for high performance and ensure sensitive and precise load handling. They are specially designed to suit the crane's usage and have been subjected to hard endurance tests.

- Crane engine: four-cylinder Liebherr turbo-diesel engine, 145 kW/197 hp at 1800 rpm, 920 Nm max. torque at 1100 to 1500 rpm, optimised fuel consumption thanks to electronic engine management
- Diesel-hydraulic crane drive, open oil circuits with electric LOAD SENSING control, four simultaneous working motions possible
- Electric/electronic SPS crane control via LICCON computer system
- Slewing gear can be switched as standard: released or hydraulically locked. The movement can thus be optimally adapted to the different operating requirements, e.g. sensitive assembly work or rapid work cycles
- Self-manufactured Liebherr winches, 88 kN line pull at the outer layer, greater line pull means less rope reeving is needed



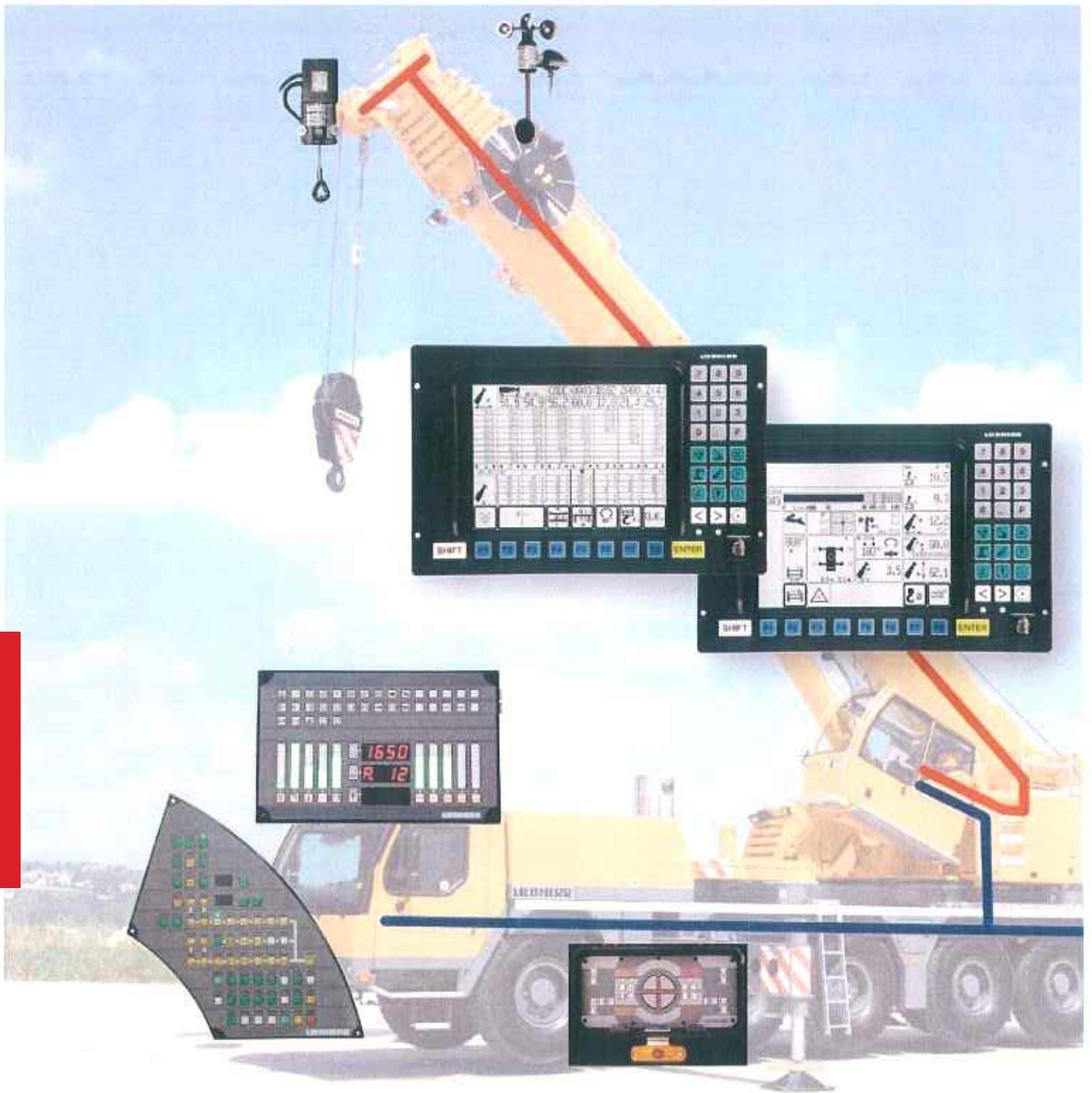
### The slewing gear

- Liebherr planetary gearing, spring-loaded multi-disc brake
- Can be switched as standard: released or hydraulically locked
- Slewing speed can be steplessly adjusted from 0 to 1.5 rpm
- Six stages can be pre-selected, from 15% to 100%



### Centralised lubrication

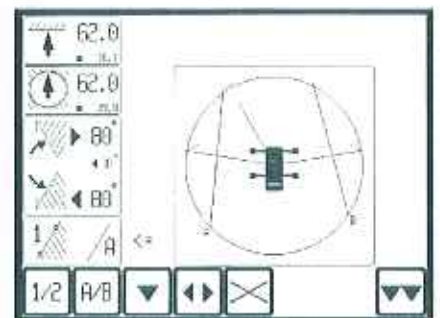
- Centralised lubrication system as standard for slewing ring, boom bearings, luffing ram and winch bearings
- Uniform application of lubricant
- Lubricant level visible in transparent container at all times



SYSTEM-FUNKTION:	WISPE:	GRATE:	LE:
z.B.:	IDENTIFIZIERUNG	0	1-300L 1-307
0.0.1:	UVS-Werkzeuge	101	1 0906 - 001 40
0.0.2:	UVS-Werkzeuge	102-1101	0 0 - 20 40
0.0.3:	Erneuerung Rostschutz (22) 23H101	0	0 0 - 20 40
0.0.4:	Drehen Freilauf / Freilauf	101	1 0205 - 050 40
0.0.5:	klappenlose Wispen	102-1101	0 0 - 20 40
0.0.6:	Drehen Spinn / Teststat./Drehen	101	1 0225 - 051 40
0.0.7:	Drehen Lufe	101	0 0 - 20 40

### The LICCON test system

- Rapid localisation of problems without any other measuring instruments
- Error code and description displayed
- Convenient interactive functions for monitoring all inputs and outputs
- Displays functions and allocation of sensors and actuators



# Intelligent crane controls

## For functional and safe crane operation: the LICCON computer system

Both the software and hardware for operating the mobile crane have been developed by Liebherr itself. At the centre stands the LICCON computer system (Liebherr Computed Controlling). This system performs various information, control and monitoring functions. The control components have proved themselves all over the world in the most diverse climatic conditions.

## LICCON configuration and operating programme

- Application programmes:
  - Safe load indicator (LMB)
  - Configuration programme with configuration diagram
  - Operating programme with operating diagram
  - Telescoping programme with telescoping diagram
- Setting of the configuration using convenient interactive functions
- Representation of all important data using graphic symbols
- Reliable cut-off when permissible load moments are exceeded
- Winch indications for highly precise lifting/lowering of load

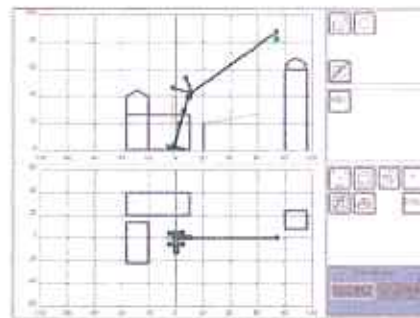
## Data bus technology

Liebherr mobile cranes are fully networked using data bus systems. All major electric and electronic parts are fitted with their own microprocessors and communicate with each other via only a small number of data cables. Liebherr has developed a bus system to meet the special demands of mobile cranes. The data bus technology increases reliability, comfort and safety when driving and operating the cranes:

- Improved reliability thanks to greatly reduced number of electric cables and contacts
- Constant self-testing of the 'intelligent sensors'
- Extensive diagnostic options, rapid fault detection

## The LICCON work area limitation system (optional)

- Makes the crane operator's job easier by automatically monitoring workspace restrictions such as bridges, roofs, power lines, etc.
- Simple programming
- Four different limitation functions:
  - Pulley-head height limitation
  - Radius limitation
  - Slewing angle limitation
  - Edge limitation



## The LICCON works planner (optional)

- Computer programme for planning, simulating and documenting crane operations on a PC
- Representation of all the crane's load charts
- Automatic search for suitable crane based on load, radius and lifting height parameters
- Simulation of crane operations with outline functions and supporting force display

# Liebherr-Service worldwide

Liebherr offers a highly efficient worldwide mobile crane service direct from the manufacturer. Highly qualified staff, well-trained in the manufacturer's factory, look after the cranes locally with the highest-grade service technology. Intelligent warehouse and transport logistics ensure maximum availability of spare parts and speed of delivery. You can always rely on Liebherr Service – it puts the customer first.



maximcrane.com

PN 162.00.E02.2007

Liebherr-Werk Eningen GmbH

Postfach 1361, 89582 Eningen/Do., Germany

+49 7391 502-0, Fax +49 7391 502-3399

www.liebherr.com, E-Mail: info.lwe@liebherr.com



1-877-MAX-LIFT

# Mobile Crane Grue mobile

# LTM 1130-5.1

Technical Data  
Caractéristiques techniques

**MAXIM**  
Crane Works, L.P.  
1-877-MAX-LIFT

maximcrane.com



# LIEBHERR

# Lifting capacities on telescopic boom Forces de levage à la flèche télescopique

42 - 197 ft   360°  92600 lbs  85%

ft	42 ft	56 ft	70 ft	84 ft	99 ft	113 ft	127 ft	141 ft	156 ft	166 ft	170 ft	180 ft	184 ft	197 ft	ft	
9		242	182												9	
10	305	238	182	164											10	
12	199	199	182	180	154	130									12	
14	182	182	175	168	160	130									14	
16	168	168	161	156	151	130	105								16	
18	157	157	151	145	140	128	104	76							18	
20	148	146	140	135	130	125	102	76	57.5						20	
23	132	132	127	122	118	117	98.5	76	57.5						23	
26	119	119	117	112	108	107	95.5	75	57.5	47.5					26	
29	105	105	108	104	100	98	92	73	57.5	46.9	35.2	38.6			29	
32	88	88	99	96	93.5	91	87.5	70	56.9	46.1	35.2	38.6	31	31.5	32	
35			90.5	89.5	87.5	84.5	82	67	55.8	45.4	34.6	38.5	31	31.5	25.5	35
38			82.5	82.5	82	79	76.5	63.5	53.6	44.5	33.6	38	30.8	31.4	25.5	38
44			67	70.5	70.5	69.5	67	57.4	48.9	42	31.3	36.2	29.6	30.4	25.4	44
50				60.5	60.5	59.9	57.8	51.7	44.8	38.8	29.1	34.2	28.1	29.2	24.9	50
56				52.2	52.3	51.6	49.9	46.5	40.9	35.9	27	31.9	26.4	27.7	24.1	56
62					45.6	44.8	43.5	42.6	37.4	33.1	25	29.7	24.8	26.1	23.1	62
68					40.1	39.3	38.4	38.9	34.4	30.5	23.2	27.7	23.2	24.6	21.8	68
74						34.7	34.8	34.7	31.3	28.2	21.4	25.7	21.7	23.2	20.5	74
80						31	32.1	30.9	28.3	26.2	19.9	23.9	20.3	21.9	19.4	80
86							28.8	27.6	26.4	24.1	18.5	22.3	19.1	20.5	18.3	86
92							26	24.8	24.2	22	17.1	20.7	17.9	19.3	17	92
98							23.6	22.3	22.8	20.3	16	19.4	16.6	18.1	16	98
104							18.2	20.2	20.7	19	15	18.2	15.8	16.9	15	104
110								19	18.7	17.9	13.9	16.6	14.9	16	13.9	110
116								16.7	17	16.8	13	15.4	14	15	13.1	116
122									15.5	15.5	12.2	14.6	13.2	13.9	12.2	122
128									14.2	14.1	11.4	13.6	12.5	12.7	11.4	128
134										12.8	10.7	12.4	11.8	11.4	10.7	134
140										11.7	10.1	11.3	11.1	10.3	9.9	140
146											9.5	10.3	10.3	9.2	9.1	146
152											8.7	9.5	9.5	8.4	8.3	152
158													8.8	7.7	7.5	158
164													8.1	6.9	6.8	164
170													6.5	6.2	6.2	170
176														5.5	5.5	176

\* over rear - en arrière

TAR 1825331 / 1825351

# Lifting capacities on telescopic boom Forces de levage à la flèche télescopique

	42-197 ft		360°		64600 lbs		85%															
															ft							
ft	42 ft	56 ft	70 ft	84 ft	99 ft	113 ft	127 ft	141 ft	156 ft	166 ft	170 ft	180 ft	184 ft	197 ft	ft							
9	244	182													9							
10	240	182	182	164											10							
12	199	182	180	164	130										12							
14	182	175	168	160	130										14							
16	168	161	156	151	130	105									16							
18	157	151	146	140	128	104	76								18							
20	146	140	135	130	125	102	76	57.5							20							
23	131	127	122	118	117	99.5	76	57.5							23							
26	115	117	112	108	107	95.5	75	57.5	47.5						26							
29	102	104	104	100	96.5	90	73	57.5	46.9	35.2	38.6				29							
32	87	92	92.5	90.5	86	81	70	56.9	45.1	35.2	38.6	31	31.5		32							
35		82.5	84	81	77	72.5	67	55.6	45.4	34.6	38.5	31	31.5	25.5	35							
38		74	76	73	69	65	61.5	53.6	44.5	33.6	38	30.8	31.4	25.5	38							
44		62	63	60.5	57.4	54.1	53.2	48.3	42	31.3	36.2	29.6	30.4	25.4	44							
50			52.7	51.1	48.4	47.5	45.8	42.6	38.8	29.1	34.2	26.1	29.2	24.9	50							
56			44.4	43.8	41.4	41.9	39.2	37	34.5	27	31.9	26.4	27.7	24.1	56							
62				37.8	36.9	36.4	33.9	32.8	30.6	25	29.2	24.8	26.1	23.1	62							
68				32.6	33.6	32	30	29.7	27.9	23.2	26.2	23.2	24.6	21.8	68							
74					29.8	28.3	27.4	26.2	25.3	21.4	23.6	21.7	22.9	20.5	74							
80					26.3	25.2	25.2	23.4	23	19.9	21.9	20.3	20.4	19.3	80							
86						22.5	22.6	21.3	20.5	18.5	19.6	19	18.1	17.8	86							
92						20.2	20.3	19.8	18.4	17.1	17.6	17.4	16.1	15.8	92							
98						18.9	18.1	17.8	16.8	16	15.7	15.6	14.3	14	98							
104						17.3	16.3	16	15.1	14.9	14.2	14.1	12.7	12.5	104							
110							14.9	14.4	13.5	13.5	12.7	12.7	11.4	11.1	110							
116							13.5	13	12.1	12.1	11.3	11.3	10.1	9.9	116							
122								11.7	10.9	10.8	10	10.1	8.9	8.8	122							
128								10.6	9.7	9.7	9	9	7.9	7.8	128							
134									8.8	8.7	8.1	8.1	7	6.9	134							
140									7.9	7.9	7.2	7.2	6.2	6.1	140							
146										7.1	6.4	6.5	5.4	5.3	146							
152										6.3	5.6	5.7	4.6	4.6	152							
158												5	3.8	3.8	158							
164												4.4	3.2	3.2	164							
170												3.8	2.6	2.6	170							

TAB 1625353

# Lifting capacities on telescopic boom Forces de levage à la flèche télescopique





		42 - 197 ft		360°		49800 lbs		85%																							
		42 ft		56 ft		70 ft		84 ft		99 ft		113 ft		127 ft		141 ft		156 ft		166 ft		170 ft		180 ft		184 ft		197 ft			
ft		ft		ft		ft		ft		ft		ft		ft		ft		ft		ft		ft		ft		ft		ft			
9	244	182	182	164																									9		
10	240	182	180	164	130																								10		
12	199	182	180	164	130																								12		
14	182	175	168	160	130																								14		
16	168	161	156	151	130	105																							16		
18	157	151	145	140	128	104	76																						18		
20	146	140	135	130	125	102	76	57.5																					20		
23	126	127	122	118	115	98.5	76	57.5																					23		
26	110	112	108	105	98.5	91.5	75	57.5	47.5																				26		
29	96	98	95.5	91	85.5	80	73	57.5	46.9	35.2	38.6																		29		
32	84.5	85.5	84	80	75.5	71	67.5	56.9	46.1	35.2	38.6	31	31.5																32		
35		76.5	74.5	71	67.5	63.6	62	55.3	45.4	34.6	38.5	31	31.5	25.5															35		
38		68.5	66.5	64	60	57.8	56.2	51.3	44.5	33.6	38	30.8	31.4	25.5															38		
44		54.9	54.7	52.4	49.7	49.1	46.4	43.2	39.9	31.3	36.2	29.6	30.4	25.4															44		
50			45.4	43.7	43.1	41.7	39.4	37.7	35.2	29.1	33.1	28.1	29.2	24.9															50		
56			38	37.1	37.6	35.6	34.6	32.9	31.5	27	29.6	26.4	27.6	24.1															56		
62				32.6	32.6	30.7	30.5	28.9	27.9	25	26.4	24.8	24.9	23															62		
68				29.1	28.6	27.2	26.7	25.9	24.4	23.2	23.3	22.8	21.6	21.1															68		
74					25.2	24.8	23.5	22.8	21.6	21.1	20.4	20.2	18.8	18.4															74		
80					22	22.3	20.9	20.2	19.1	18.9	17.9	17.7	16.4	16.1															80		
86						19.7	18.9	18	16.9	16.7	15.8	15.7	14.3	14															86		
92						17.5	16.7	16.1	15	14.8	14	13.9	12.5	12.3															92		
98						15.6	14.9	14.3	13.4	13.2	12.4	12.3	11	10.7															98		
104						14	13.2	12.7	11.9	11.8	11	10.9	9.6	9.4															104		
110							11.8	11.3	10.4	10.4	9.6	9.6	8.4	8.2															110		
116								10.7	9.2	9.2	8.5	8.5	7.3	7.1															116		
122									9	8.2	8.2	7.5	6.3	6.1															122		
128									8.1	7.3	7.3	6.6	5.4	5.2															128		
134										6.5	6.5	5.8	4.6	4.4															134		
140										5.6	5.7	4.9	3.9	3.7															140		
146											4.9	4.2	3.1	3.1															146		
152											4.2	3.5	3.6																152		
158													3																158		
164													2.4																164		

TAB 1625355

		42 - 197 ft		360°		28000 lbs		85%																							
		42 ft		56 ft		70 ft		84 ft		99 ft		113 ft		127 ft		141 ft		156 ft		166 ft		170 ft		180 ft		184 ft		197 ft			
ft		ft		ft		ft		ft		ft		ft		ft		ft		ft		ft		ft		ft		ft		ft			
9	221	182	181	154																									9		
10	219	182	179	153	126																								10		
12	196	182	179	153	126																								12		
14	175	175	168	148	125																								14		
16	157	158	154	143	122	96																							16		
18	141	142	141	131	117	94.5	72																						18		
20	125	127	127	117	111	92.5	72	55.1																					20		
23	106	108	103	99	92	85	70	55.1																					23		
26	90	91.5	89	84	78	72	67.5	54.1	43.2																				26		
29	74	77.5	76	72	67	62.5	60.5	53	42.7	32	35.3																		29		
32	61.5	65.5	65.5	62.5	58.2	56.9	53.4	49.1	42	32	35.3	28.2	28.7																32		
35		55.3	56.8	54.7	52.1	51.1	47.3	44.2	40	31.4	35.1	28.2	28.7	23.2															35		
38		47.5	49.3	48.4	47.8	45.8	42.7	40.6	37.6	30.5	34.5	28	28.5	23.2															38		
44		38.7	38.5	39.6	37.2	36.3	34.3	32.6	28.5	30.9	26.9	27.6	23.1	23.1															44		
50			30.8	32.3	32.2	31.8	30.6	29.2	27.8	26.4	26.3	24.9	24.3	22.3															50		
56			25.2	26.6	26.6	27.1	26	25	23.8	23.2	22.2	21.8	20.3	19.8															56		
62				22.3	22.4	22.7	22.3	21.4	20.1	19.8	18.8	18.5	17.1	16.7															62		
68				18.9	19	19.3	19	18.4	17.2	17	16	15.8	14.4	14.1															68		
74					16.3	16.5	16.2	15.9	14.8	14.6	13.7	13.6	12.2	11.9															74		
80					14.1	14.4	14	13.7	12.8	12.6	11.7	11.6	10.3	10															80		
86						12.5	12	11.7	10.9	10.8	10	9.9	8.6	8.4															86		
92						10.8	10.3	9.9	9.2	9.2	8.5	8.5	7.2	7															92		
98						9.4	8.9	8.6	8	7.9	7.3	7.2	5.9	5.8															98		
104						8.2	7.7	7.4	6.8	6.8	6.2	6.1	4.9	4.7															104		
110							6.6	6.3	5.7	5.8	5.1	5.1	3.9	3.7															110		
116							5.7	5.4	4.8	4.9	4.2	4.3	3	3															116		
122								4.6	3.9	4	3.3	3.5																	122		
128								3.8	3.2	3.2																			128		





TAB 1625357

# Lifting capacities on telescopic boom Forces de levage à la flèche télescopique

42 - 197 ft     **85%**

ft	42 ft	56 ft	70 ft	84 ft	99 ft	113 ft	127 ft	141 ft	156 ft	166 ft	170 ft	180 ft	184 ft	197 ft	ft
9	243	182													9
10	239	182	182	164											10
12	199	182	180	164	130										12
14	182	175	168	160	130										14
16	168	161	156	150	130	105									16
18	153	147	139	133	120	103	76								18
20	136	132	122	116	107	98	76	57.5							20
23	112	106	102	95.5	88.5	82	76	57.5							23
26	92.5	89.5	85.5	80.5	74.5	71	67	57.5	47.5						26
29	77.5	75.5	72.5	68.5	64.5	62.5	58.1	53.3	46.9	35.2	38.6				29
32	65.5	64.5	62.5	59.4	58.1	55.1	51.7	49.1	45	35.2	38.6	31	31.5		32
35		56.1	54.7	52.8	51.9	46.7	47	44.1	40.8	34.6	37.2	31	31.5	25.5	35
38		49.4	48.4	47.9	46.2	43.9	42.5	40.2	37.5	33.6	35.4	30.8	31.4	25.5	38
44		39.1	39.3	39.4	37.7	36.8	35.1	33.6	31.7	30.3	29.9	28.4	27.4	25.2	44
50			32.5	32.6	31.4	30.8	29.3	28	26.4	25.9	24.8	24.4	22.8	22.3	50
56			26.9	27.5	26.5	26.1	24.7	23.6	22.2	21.9	20.8	20.5	19	18.5	56
62				23.4	22.6	22.3	21.1	20.1	18.8	18.6	17.6	17.3	15.9	15.5	62
68				19.9	19.5	19.3	18.1	17.2	16.1	15.9	14.9	14.7	13.3	13	68
74					16.9	16.8	15.7	14.9	13.8	13.6	12.7	12.5	11.2	10.9	74
80					14.5	14.6	13.8	12.8	11.8	11.7	10.8	10.7	9.3	9.1	80
86						12.6	11.9	11.1	10.2	10	9.1	9.1	7.7	7.5	86
92						10.9	10.2	9.6	8.7	8.6	7.7	7.7	6.4	6.2	92
98						9.5	8.8	8.3	7.4	7.3	6.5	6.5	5.2	5	98
104						8.4	7.7	7.2	6.3	6.2	5.4	5.4	4.1	4	104
110							6.7	6.3	5.4	5.3	4.5	4.5	3.2	3	110
116							5.7	5.3	4.5	4.4	3.6	3.6			116
122								4.5	3.7	3.6	2.8				122
128								3.7	2.9	2.9					128

TAG 1825358

42 - 197 ft     **85%**

ft	42 ft	56 ft	70 ft	84 ft	99 ft	113 ft	127 ft	141 ft	156 ft	166 ft	170 ft	180 ft	184 ft	197 ft	ft
9	242	182													9
10	238	182	182	164											10
12	199	182	180	164	130										12
14	182	175	168	160	130										14
16	168	161	156	144	130	105									16
18	151	143	136	126	117	100	76								18
20	133	124	116	109	101	92.5	76	57.5							20
23	106	99.5	96	90	82.5	77	73.5	57.5							23
26	86	83.5	80	75	70.5	67.5	62.5	57	47.5						26
29	71.5	70	67.5	64	62.5	58.6	54.9	52	46.3	35.2	38.6				29
32	60.5	59.9	58.2	56.1	54.7	51.2	49.3	46	42.2	35.2	38.4	31	31.5		32
35		51.9	51.1	50.3	48.2	46.1	44.1	41.7	38.8	34.6	36.7	31	31.5	25.5	35
38		45.6	45.3	45	42.9	41.7	39.6	37.8	35.6	33.6	33.6	30.8	30.3	25.5	38
44		36	36.4	36.5	35	34.3	32.5	30.9	29.2	28.6	27.4	26.7	25.2	23.6	44
50			29.8	30.1	29	28.4	26.9	25.7	24.2	23.7	22.6	22.2	20.7	20.1	50
56			24.6	25.3	24.3	23.9	22.6	21.5	20.2	19.9	18.8	18.6	17.1	16.6	56
62				21.3	20.7	20.4	19.2	18.2	17	16.8	15.8	15.8	14.1	13.8	62
68				18	17.7	17.5	16.4	15.6	14.4	14.2	13.3	13.1	11.7	11.4	68
74					15.2	15.1	14.1	13.3	12.3	12.1	11.2	11.1	9.7	9.4	74
80					13	13.1	12.2	11.4	10.4	10.3	9.4	9.3	8	7.7	80
86						11.2	10.5	9.8	8.8	8.7	7.9	7.8	6.5	6.3	86
92						9.6	8.9	8.4	7.5	7.4	6.5	6.5	5.2	5	92
98						8.4	7.7	7.2	6.3	6.2	5.4	5.3	4.1	3.9	98
104						7.3	6.7	6.2	5.2	5.2	4.4	4.3			104
110							5.6	5.3	4.3	4.3	3.5	3.4			110
116							4.7	4.4	3.5	3.5					116
122								3.5							122
128								2.8							128

TAG 1825360

# Lifting capacities on telescopic boom Forces de levage à la flèche télescopique

42 - 197 ft   360°  14600 lbs  85%

ft	42 ft	56 ft	70 ft	84 ft	99 ft	113 ft	127 ft	141 ft	156 ft	168 ft	170 ft	180 ft	184 ft	197 ft	ft
9	241	182													9
10	238	182	182	164											10
12	199	182	180	164	130										12
14	182	175	168	157	130										14
16	166	161	149	136	124	105									16
18	146	139	129	118	109	97	78								18
20	125	116	111	102	94	86.5	75.5	57.5							20
23	98	94	89	83	76	74	67.5	57.5							23
26	79	77	73.5	69	67	62.5	58.4	53.9	47.5						26
29	65.5	64.5	62	60	57.8	53.8	51.8	47.9	43.7	35.2	38.6				29
32	55.3	54.8	53.8	52.9	50.3	48.3	45.6	43.2	39.7	35.2	36.9	31	31.5		32
35		47.4	47	46.5	44.3	43.1	40.6	38.6	36.1	34.4	33.9	31	30.5	25.5	35
38		41.5	41.4	41.2	39.5	38.4	36.3	34.5	32.5	31.8	30.4	29.4	28	25.5	38
44		32.6	33.1	33.3	32	31.3	29.6	28.1	26.4	25.9	24.7	24.2	22.6	21.9	44
50			26.9	27.3	26.3	25.8	24.4	23.2	21.7	21.3	20.2	19.9	18.3	17.8	50
56			22.1	22.8	22	21.6	20.3	19.3	18	17.7	16.7	16.5	15	14.6	56
62				19.2	18.5	18.3	17.1	16.2	15.1	14.8	13.8	13.7	12.2	11.9	62
68				16.1	15.8	15.6	14.6	13.7	12.6	12.4	11.5	11.4	10	9.7	68
74					13.4	13.4	12.4	11.6	10.6	10.5	9.5	9.4	8.1	7.8	74
80					11.3	11.5	10.8	9.9	8.9	8.8	7.9	7.8	6.5	6.3	80
86						9.7	9	8.4	7.4	7.3	6.5	6.4	5.1	4.9	86
92						8.3	7.7	7.1	6.1	6	5.2	5.2			92
98						7.2	6.6	6	5	5	4.1	4.1			98
104						6.1	5.5	5	4.1	4	3.2	3.2			104
110							4.5	4.1	3.2	3.2					110
116							3.7	3.3							116

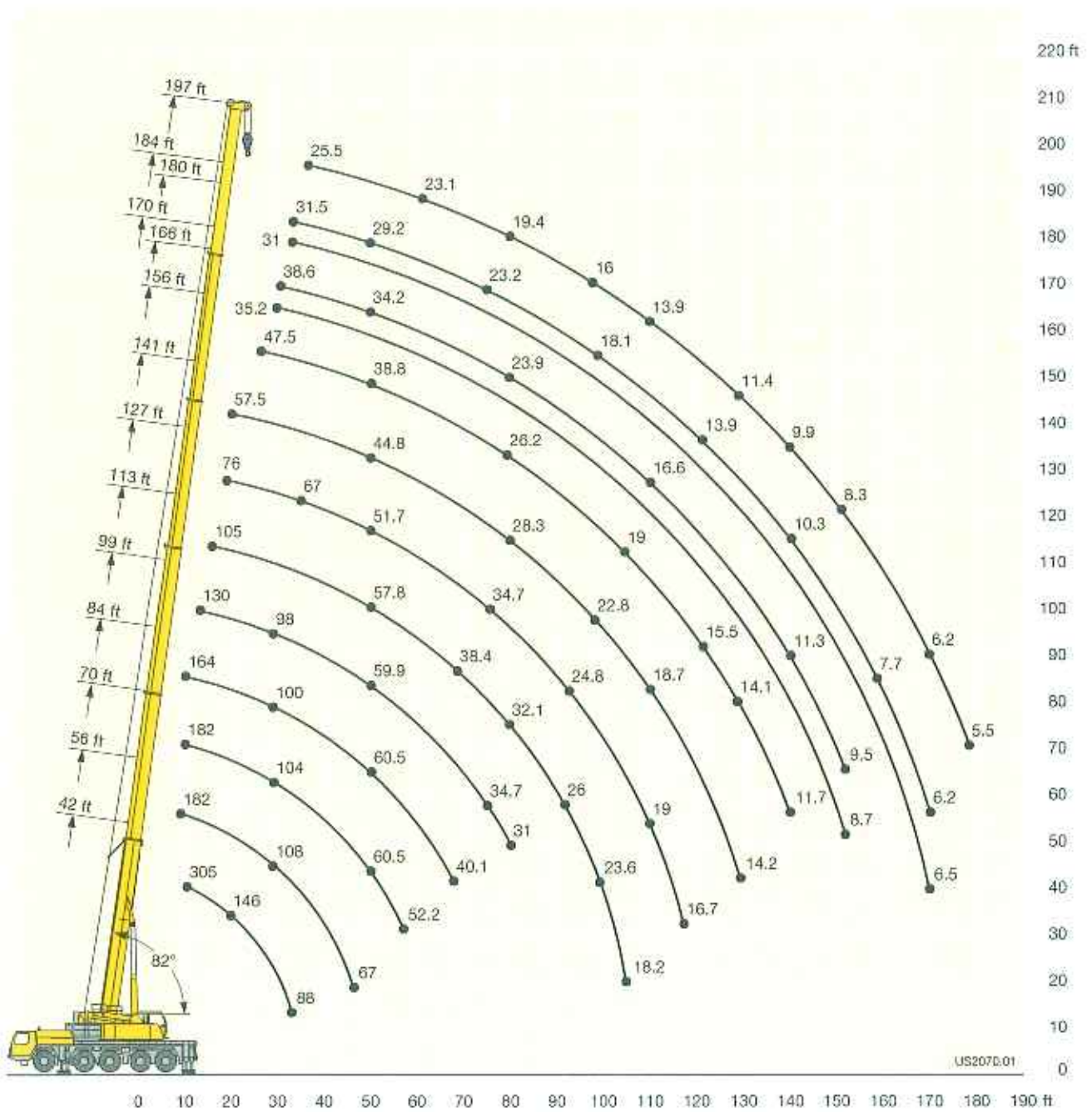
TAR 1821062

42 - 197 ft   360°  0 lbs  85%

ft	42 ft	56 ft	70 ft	84 ft	99 ft	113 ft	127 ft	141 ft	156 ft	168 ft	170 ft	180 ft	184 ft	197 ft	ft
9	216														9
10	214	182	181	154											10
12	190	180	176	150	128										12
14	166	164	151	133	120										14
16	144	135	123	113	101	87									16
18	121	113	103	95.5	86	79	63								18
20	97.5	92.5	86.5	79	73	69	62	49							20
23	73	71.5	68	63	61.5	56.3	52.8	48.9							23
26	57.4	57.7	56.3	54.6	51.3	49.1	45.5	42.9	38.6						26
29	45	47.7	47.2	46.4	43.9	42.2	39.4	37.1	34.4	32	31.2				29
32	36	39.8	40.2	39.9	38	36.6	34.3	32.3	30.1	29.1	27.9	26.1	24.3		32
35		33.3	34.6	34.7	33.1	32.1	30.1	28.3	26.4	25.7	24.4	23.8	22.1	20.2	35
38		28.1	30	30.4	29.1	28.3	26.6	25	23.3	22.7	21.5	21	19.3	18.7	38
44		20.8	22.8	24	23.1	22.6	21.2	19.9	18.5	18.1	17	16.6	15	14.5	44
50			17.5	19	18.6	18.3	17	16	14.7	14.4	13.4	13.1	11.6	11.2	50
56			13.6	15.1	15.1	14.9	13.8	12.9	11.8	11.6	10.6	10.4	9	8.7	56
62				12.1	12.2	12.3	11.3	10.5	9.4	9.3	8.3	8.2	6.8	6.5	62
68				9.7	9.8	10	9.2	8.5	7.5	7.4	6.4	6.4			68
74					7.8	8.2	7.5	6.8	5.9	5.8	4.9	4.8			74
80					6.2	6.6	6	5.4							80
86						5.3	4.8								86
92						4.1									92
98						3.2									98
104						2.4									104

TAR 1821065

# Lifting heights Hauteurs de levage



maximcrane.com

US2070.01

# Lifting capacities on the hydraulically or mechanically variable folding jib Forces de levage à la fléchette pliante à variation hydraulique ou mécanique



ft	42 ft			113 ft			127 ft			141 ft			156 ft			ft
	35 ft			35 ft			35 ft			35 ft			35 ft			
	0°	20°	40°	0°	20°	40°	0°	20°	40°	0°	20°	40°	0°	20°	40°	
12	38.6															12
14	38.6															14
17	38.5			38.5												17
20	37.7			38.5			37.1									20
23	35.7			38.6			37.1									23
26	33.6			38.6			36.9			31.3						26
29	31.5	30.3	25	38.6	32.3		36.3			31.3			26			29
32	29.3	28.6	24	38.6	31.4		35.6	29.3		31.1			26			32
35	27.1	27	23.1	38	30.4		34.9	29.3		30.8			26			35
38	25.3	25.4	22.2	37.1	29.5	23.5	34.2	28.8		30.3	27		25.9			38
44	21.8	21.8	19.9	35.2	27.9	22.8	32.8	27.3	22.2	29.4	26.1	21.8	25.4	23.8		44
50	19.1	19.4	18.4	33.5	26.4	21.9	31.4	26.1	21.7	28.5	25	21.3	24.9	23.3	20.2	50
56	17	17.9	17.4	31.7	25.2	21.2	30.2	24.9	21	27.6	24.1	20.6	24.3	22.5	19.8	56
62	15.2	16.8	11.6	29.9	24	20.5	29	23.9	20.4	26.7	23.2	20.1	23.7	21.6	19.4	62
68				28	23	20	27.7	23	19.9	25.8	22.3	19.6	22.9	21.2	18.9	68
74				26.1	22.1	19.4	26.3	22.1	19.4	24.8	21.6	19.1	21.7	20.5	18.5	74
80				24.3	21.2	19	25	21.3	19	23.6	21	18.8	20.6	19.7	18.2	80
86				22.6	20.4	18.5	23.6	20.6	18.6	22.1	20.2	18.4	19.4	18.8	17.7	86
92				21	19.6	18	22.3	19.9	18.2	20.6	19.4	18	18.2	17.9	17.3	92
98				19.7	18.8	17.6	20.6	19.3	17.8	19.2	18.6	17.7	17	17	16.9	98
104				18.5	18.1	17.3	19.2	18.6	17.5	17.6	17.8	17.4	15.8	15.9	16	104
110				17.4	17.5	17	17.3	17.8	17.1	16	16.7	16.7	14.8	14.9	15	110
116				16.2	16.6	16.6	15.6	16.3	16.4	14.6	15.2	15.5	13.9	14	14.1	116
122				14.9	15.2	12.1	14.1	14.7	15	13.6	13.7	14	12.7	13.1	13.3	122
128				13.6	13.8		12.7	13.2	13.4	12.5	12.7	12.9	11.4	12	12.3	128
134				12	12.6		11.4	11.8	10.8	11.2	11.8	12	10.5	10.8	11.1	134
140							10.3	10.7		10.1	10.6	10.8	9.9	9.9	10	140
146							9.4	9.6		9.3	9.6	9.4	9.3	9.4	9.5	146
152										8.5	8.8		8.6	8.8	8.9	152
158										7.8	8		7.8	8.2	8.3	158
164										7.5	7.7		7	7.3	7.3	164
170													6.4	6.5		170
176													6.1	6.2		176

TAB 1825371 / 1825091 / 1825111



ft	166 ft			170 ft			180 ft			184 ft			197 ft			ft
	35 ft			35 ft			35 ft			35 ft			35 ft			
	0°	20°	40°	0°	20°	40°	0°	20°	40°	0°	20°	40°	0°	20°	40°	
32	18			19.4												32
35	18			19.4			15.8			16.3						35
38	18			19.4			15.8			16.3			13.6			38
44	18	18		19.4	19.4		15.8			16.3			13.6			44
50	18	17.7		19.4	19.4		15.8	15.8		16.3	16.3		13.6			50
56	17.6	17.1	16.1	19.4	19.4	18.5	15.8	15.8		16.3	16.3		13.6	13.6		56
62	16.9	16.4	15.7	19.3	19.4	18.4	15.6	15.5	14.9	16.1	16.1	15.6	13.6	13.6	13.1	62
68	16.1	15.6	15.1	19	19	18.1	15.3	15	14.7	15.8	15.6	15.4	13.6	13.4	13.1	68
74	15.3	14.9	14.5	18.4	18.1	17.7	14.7	14.4	14.1	15.4	15.1	14.9	13.2	13.1	13	74
80	14.5	14.1	13.9	17.5	17.1	17	14.1	13.7	13.6	14.9	14.5	14.4	12.8	12.8	12.8	80
86	13.7	13.4	13.3	16.6	16.3	16.2	13.5	13.1	13	14.2	14	13.9	12.5	12.3	12.3	86
92	12.9	12.8	12.7	15.7	15.5	15.4	12.8	12.5	12.4	13.5	13.4	13.3	11.9	11.9	11.9	92
98	12.2	12	12	14.8	14.6	14.6	12.2	12	11.9	12.9	12.7	12.7	11.5	11.4	11.4	98
104	11.4	11.4	11.5	14	13.9	13.9	11.5	11.4	11.4	12.2	12.1	12.2	11	10.9	11	104
110	10.6	10.7	10.8	13.2	13.1	13.2	10.9	10.8	10.9	11.6	11.5	11.5	10.4	10.4	10.5	110
116	9.9	10	10.2	12.4	12.4	12.5	10.2	10.2	10.3	11	10.9	11	9.9	10	10.1	116
122	9.3	9.4	9.6	11.7	11.7	11.9	9.6	9.7	9.8	10.4	10.4	10.5	9.3	9.5	9.6	122
128	8.7	8.9	9	11	11	11.2	9.1	9.1	9.3	9.9	9.9	10	8.7	8.9	9.2	128
134	8.1	8.3	8.5	10.3	10.4	10.6	8.6	8.7	8.8	9.4	9.4	9.5	8.1	8.4	8.6	134
140	7.6	7.8	7.9	9.5	9.8	9.9	8.1	8.2	8.3	8.9	8.9	9	7.6	7.9	8.1	140
146	7.2	7.3	7.5	8.6	9	9.2	7.6	7.8	7.9	8.4	8.5	8.6	7.2	7.4	7.6	146
152	6.8	6.9	7	8	8.2	8.5	7.2	7.4	7.5	7.8	8	8.2	6.8	7	7.2	152
158	6.4	6.5	6.6	7.6	7.6	7.7	6.9	7	7.1	7.2	7.6	7.7	6.4	6.6	6.8	158
164	6	6.1	6.2	7.2	7.3	7.3	6.6	6.7	6.8	6.5	6.9	7.2	6	6.2	6.4	164
170	5.7	5.8	5.9	6.8	6.9	7	6.3	6.4	6.4	5.8	6.2	6.4	5.6	5.8	6	170
176	5.4	5.5	5.4	6.1	6.4	6.4	5.9	6	6.1	5.1	5.5	5.6	4.9	5.3	5.6	176
182	5.1	5.2		5.4	5.7		5.4	5.6	5.7	4.4	4.7	4.9	4.3	4.7	4.9	182
188	4.9			4.8	5		4.8	5.1	5.1	3.8	4.1	4.2	3.7	4	4.2	188
194							4.3	4.4		3.2	3.5		3.1	3.4	3.5	194
200													2.6	2.8		200

TAB 1825371 / 1825091 / 1825111

maximcrane.com

# Lifting capacities on the hydraulically or mechanically variable folding jib Forces de levage à la fléchette pliante à variation hydraulique ou mécanique

		42 - 187 ft			62 ft			360°			92600 lbs			85%					
ft	42 ft			99 ft			113 ft			127 ft			141 ft			156 ft			ft
	62 ft			62 ft			62 ft			62 ft			62 ft			62 ft			
	0°	20°	40°	0°	20°	40°	0°	20°	40°	0°	20°	40°	0°	20°	40°	0°	20°	40°	
14	17.2																		14
17	17.1			14.2															17
20	16.5			14.2			13.3												20
23	15.9			14			13.3												23
26	15.4			13.9			13.3			12.4									26
29	14.8	11.8		13.6			13.2			12.4			11.9						29
32	14.2	11.6		13.4			13			12.3			11.8			11.6			32
35	13.6	11.3		13.2			12.8			12.2			11.7			11.6			35
38	13.1	10.9		12.9			12.6			12			11.6			11.6			38
44	12.1	10.2		12.4	10.2		12.2	9.9		11.7			11.3			11.3			44
50	11.2	9.7	8.7	11.9	9.9		11.8	8.8		11.3	9.6		11	9.6		11.1			50
56	10.5	9.2	8.4	11.5	9.6	8.3	11.4	9.6		11	9.5		10.8	9.4		10.8	9.4		56
62	9.8	8.9	8.2	11.1	9.3	8.3	11	9.3	8	10.7	9.3	8	10.5	9.2		10.5	9.3		62
68	9	8.6	8	10.6	9.1	8.2	10.6	9.1	8	10.4	9.1	8	10.2	9	8	10.2	9.1	8	68
74	8.3	8.3	7.9	10.2	8.9	8	10.3	8.9	8	10.1	8.9	8	9.9	8.8	8	10	8.9	8	74
80	7.7	8.1	7.9	9.8	8.7	7.9	9.9	8.7	7.9	9.8	8.7	7.9	9.7	8.7	7.9	9.8	8.7	7.9	80
86	7.1	7.9		9.4	8.5	7.8	9.6	8.5	7.8	9.6	8.5	7.8	9.5	8.5	7.8	9.6	8.6	7.8	86
92				9.1	8.3	7.8	9.3	8.4	7.8	9.3	8.4	7.8	9.2	8.4	7.8	9.4	8.4	7.8	92
98				8.8	8.2	7.8	9	8.2	7.7	9.1	8.2	7.7	9.1	8.2	7.7	9.2	8.3	7.7	98
104				8.5	8	7.7	8.7	8.1	7.7	8.8	8.1	7.7	8.9	8.1	7.7	9	8.2	7.7	104
110				8.1	8	7.7	8.4	8	7.7	8.6	8	7.7	8.7	8	7.7	8.8	8.1	7.7	110
116				7.7	7.8	7.7	8.1	7.9	7.7	8.3	7.9	7.7	8.5	7.9	7.7	8.7	8	7.6	116
122				7.4	7.7	7.7	7.8	7.9	7.7	8.1	7.8	7.7	8.3	7.9	7.7	8.5	7.9	7.6	122
128				7.1	7.5	7.7	7.5	7.7	7.7	7.8	7.7	7.7	8	7.8	7.7	8.3	7.9	7.6	128
134				6.8	7.3	7.4	7.2	7.6	7.7	7.5	7.6	7.6	7.8	7.6	7.6	8.1	7.8	7.6	134
140				6.5	6.9		6.9	7.4	7.6	7.2	7.4	7.5	7.5	7.5	7.5	7.9	7.7	7.6	140
146				6.3			6.7	7.2	7.4	6.9	7	7.2	7.3	7.3	7.4	7.7	7.6	7.6	146
152							6.5	7		6.6	6.7	6.9	7	7.1	7.3	7.5	7.5	7.6	152
158							6.3	6.8		6.3	6.4	6.5	6.8	6.8	7	7.2	7.4	7.5	158
164							6.1	6.6		6	6.1	6.3	6.5	6.6	6.7	7	7.2	7.4	164
170										5.7	5.9		6.2	6.3	6.5	6.7	6.9	7.1	170
176										5.5	5.6		6	6.1	6.3	6.5	6.6	6.8	176
182													5.8	5.9		5.9	6.3	6.5	182
188													5.6	5.7		5.3	5.8	5.9	188
194																4.8	5.1		194

TAB 1825371 / 1825091 / 1825111

# Lifting capacities on the hydraulically or mechanically variable folding jib Forces de levage à la flèche pliante à variation hydraulique ou mécanique



ft	166 ft			170 ft			180 ft			184 ft			197 ft			ft
	62 ft			62 ft			62 ft			62 ft			62 ft			
	0°	20°	40°	0°	20°	40°	0°	20°	40°	0°	20°	40°	0°	20°	40°	
35	9.9			10.7												35
38	9.9			10.7			9.2				9.5					38
44	9.9			10.5			9.2				9.4			8.5		44
50	9.8			10.4			9.2				9.3			8.4		50
56	9.6	8.5		10.2	9.2		9.1				9.2			8.3		56
62	9.5	8.5		10	9.1		9	8.4			9.1	8.5		8.3		62
68	9.3	8.5		9.8	8.9		8.9	8.4			9	8.4		8.2	7.8	68
74	9.1	8.5	7.8	9.6	8.8	7.8	8.8	8.3			8.8	8.3		8.2	7.8	74
80	9	8.4	7.8	9.4	8.6	7.8	8.7	8.2	7.5		8.7	8.2	7.7	8.1	7.8	80
86	8.9	8.3	7.7	9.2	8.5	7.8	8.5	8.1	7.5		8.6	8.1	7.6	8	7.7	86
92	8.7	8.2	7.7	9.1	8.3	7.7	8.4	8	7.5		8.5	8	7.6	7.9	7.7	92
98	8.6	8	7.6	8.9	8.2	7.7	8.3	7.9	7.5		8.4	7.9	7.5	7.8	7.6	98
104	8.5	8	7.6	8.8	8.1	7.7	8.2	7.8	7.5		8.3	7.8	7.5	7.8	7.5	104
110	8.3	7.9	7.6	8.6	8	7.6	8.1	7.8	7.5		8.1	7.8	7.5	7.7	7.5	110
116	8.1	7.8	7.6	8.5	7.9	7.6	8	7.7	7.5		8.1	7.7	7.5	7.6	7.4	116
122	7.8	7.7	7.6	8.4	7.8	7.6	7.8	7.6	7.5		7.9	7.7	7.5	7.6	7.4	122
128	7.6	7.5	7.6	8.3	7.8	7.6	7.6	7.6	7.5		7.8	7.6	7.5	7.4	7.3	128
134	7.3	7.4	7.5	8.1	7.7	7.6	7.4	7.5	7.4		7.6	7.5	7.5	7.2	7.2	134
140	7	7.2	7.3	7.9	7.7	7.5	7.1	7.2	7.4		7.5	7.4	7.5	6.9	7.1	140
146	6.7	6.9	7.1	7.7	7.6	7.5	6.9	7	7.2		7.3	7.2	7.4	6.6	7	146
152	6.3	6.8	6.9	7.5	7.4	7.5	6.5	6.7	6.9		7	7	7.2	6.3	6.6	152
158	6	6.3	6.5	7.2	7.3	7.5	6.3	6.5	6.7		6.7	6.9	7	6	6.3	158
164	5.6	5.9	6.1	6.8	7.1	7.3	6	6.2	6.4		6.5	6.6	6.8	5.7	6	164
170	5.3	5.6	5.8	6.2	6.9	7.1	5.7	5.9	6.1		6.2	6.4	6.6	5.4	5.7	170
176	5.1	5.3	5.4	5.9	6.3	6.6	5.4	5.6	5.8		5.7	6.1	6.3	5.1	5.4	176
182	4.8	5	5.1	5.6	5.8	6	5.1	5.3	5.5		5.1	5.8	6	4.7	5.1	182
188	4.5	4.7	4.8	5.4	5.5	5.6	4.9	5.1	5.2		4.5	5.3	5.6	4.3	4.8	188
194	4.3	4.4	4.5	4.9	5.2	5.4	4.7	4.8	5		4	4.6	5	3.8	4.4	194
200	4	4.2		4.4	4.9		4.3	4.6	4.7		3.4	4	4.3	3.2	3.9	200
210				3.6			3.5	3.9	4		2.6	3.1	3.2	2.4	3	210

TAB 1825371 / 1825091 / 1825111

# Lifting capacities on the hydraulically or mechanically variable folding jib Forces de levage à la flèche pliante à variation hydraulique ou mécanique



ft	42 ft			113 ft			127 ft			141 ft			156 ft			ft
	35 ft			35 ft			35 ft			35 ft			35 ft			
	0°	20°	40°	0°	20°	40°	0°	20°	40°	0°	20°	40°	0°	20°	40°	
12	38.5															12
14	38	34.2														14
17	36.3	33.9		38.6												17
20	34.3	32.2		38.6			33.7									20
23	32.4	30.6		38.5			33.7									23
26	30.6	29.1	23.7	37.5			33.6			28.4						26
29	28.6	27.5	22.8	36.6	29.3		33			28.4			23.6			29
32	26.6	26	21.8	35.6	28.5		32.4	26.7		26.3			23.6			32
35	24.7	24.6	21	34.7	27.7		31.5	26.6		28			23.6			35
38	23	23.1	20.2	32.2	26.8	21.4	29.5	26.2		27	24.6		23.5			38
44	19.9	19.8	18.1	26.2	25.4	20.7	24.4	24.7	20.2	23.5	23.4	19.8	21.6	21.6		44
50	17.4	17.6	16.7	21.3	23	19.9	21.5	21.7	19.8	20.7	20.7	19.3	19.4	20	18.3	50
56	15.4	16.3	15.9	17.5	19.6	19.2	19	18.9	18.7	17.9	18.6	18.2	16.7	17.8	17.7	56
62	13.8	15.3	10.7	14.5	16.3	17.6	16.1	17.1	16.8	15.1	16.6	16.5	13.9	15.6	16.2	62
68				12.1	13.7	15	13.7	15.1	15.1	12.7	14.2	14.8	11.7	13.2	14.3	68
74				10	11.4	12.6	11.7	12.9	14	10.7	12	13.2	9.7	11.2	12.4	74
80				8.2	9.5	10.5	9.9	11	12	9	10.2	11.2	8.1	9.4	10.5	80
86				6.8	7.9	8.7	8.4	9.4	10.3	7.6	8.7	9.6	6.7	7.9	8.8	86
92				5.5	6.5	7.2	7.2	8	8.7	6.4	7.3	8.1	5.5	6.5	7.4	92
98				4.4	5.2	5.8	6.1	6.9	7.5	5.3	6.2	6.8	4.4	5.4	6.1	98
104				3.3	4.1	4.6	5	5.8	6.3	4.3	5.1	5.7	3.5	4.3	5	104
110					3.1	3.5	4.1	4.8	5.2	3.5	4.2	4.7		3.4	4	110
116							3.3	3.9	4.2				3.4	3.8	3.1	116
122								3.1	3.3				3			122

TAB 1821122 / 1820142 / 1820182



ft	166 ft			170 ft			180 ft			184 ft			197 ft			ft
	35 ft			35 ft			35 ft			35 ft			35 ft			
	0°	20°	40°	0°	20°	40°	0°	20°	40°	0°	20°	40°	0°	20°	40°	
32	16.3			18.1												32
35	16.3			18.1			14.3									35
38	16.3			18.1			14.3			14.8						38
44	16.3	16.3		18.1	18.1		14.3			14.8			12.4			44
50	16.3	16.1		17.3	17.8		14.3	14.3		14.8			12.4			50
56	15.5	15.5	14.6	15.2	16.6	16.1	13.9	14.3		14.8	14.8		12.4			56
62	13.6	14.6	14.3	12.7	14.5	15.9	12.3	13.6	13.5	13.4	14.5		12	12.4		62
68	11.3	12.9	13.5	10.5	12.1	13.5	10.2	11.8	12.9	11.1	13	13.1	10.6	11.8	11.9	68
74	9.4	10.9	12.1	8.6	10.1	11.4	8.4	9.9	11.1	8.9	10.7	12.2	8.5	10.3	11.3	74
80	7.8	9.1	10.2	7	8.4	9.5	6.8	8.2	9.3	7.2	8.8	10.1	6.8	8.4	9.8	80
86	6.5	7.6	8.6	5.7	6.9	7.9	5.5	6.7	7.8	5.6	7.1	8.3	5.3	6.8	8	86
92	5.2	6.3	7.2	4.5	5.6	6.5	4.3	5.4	6.4		5.6	6.7		5.3	6.5	92
98	4.2	5.2	6	3.4	4.5	5.3	3.3	4.3	5.2		4.4	5.4			5.1	98
104	3.3	4.2	4.9		3.5	4.2		3.3	4.1		3.3	4.2			3.9	104
110		3.3	3.9			3.2			3.1			3.1				110
116			3													116

TAB 1821122 / 1820142 / 1820182

# Lifting capacities on the hydraulically or mechanically variable folding jib Forces de levage à la flèche pliante à variation hydraulique ou mécanique



ft	42 ft			99 ft			113 ft			127 ft			141 ft			156 ft			ft
	62 ft			62 ft			62 ft			62 ft			62 ft			62 ft			
	0°	20°	40°	0°	20°	40°	0°	20°	40°	0°	20°	40°	0°	20°	40°	0°	20°	40°	
14	15.6																		14
17	15.5			12.9															17
20	15			12.9			12.1												20
23	14.5			12.6			12.1												23
26	14			12.6			12.1			11.2									26
29	13.4	10.6		12.4			12			11.2			10.9						29
32	12.9	10.5		12.2			11.6			11.2			10.8			10.6			32
35	12.4	10.2		12			11.6			11.1			10.6			10.6			35
38	11.9	9.9		11.7			11.5			10.9			10.5			10.5			38
44	11	9.3		11.3	9.3		11.1	9		10.6			10.3			10.3			44
50	10.2	8.8	7.9	10.9	9		10.7	8.9		10.3	8.8		10	8.7		10.1			50
56	9.5	8.4	7.7	10.5	8.7	7.6	10.3	8.7		10	8.6		9.8	8.6		9.8	8.5		56
62	8.9	8.1	7.5	10.1	8.5	7.5	10	8.5	7.3	9.7	8.4	7.3	9.5	8.4		9.6	8.5		62
68	8.2	7.8	7.3	9.7	8.2	7.4	9.7	8.3	7.3	9.4	8.2	7.3	9.2	8.2	7.3	9.3	8.3	7.3	68
74	7.6	7.6	7.2	9.3	8	7.3	9.3	8.1	7.3	9.2	8	7.3	9	8	7.3	9	8.1	7.3	74
80	7	7.4	7.1	8.9	7.9	7.2	9	7.9	7.2	8.9	7.9	7.2	8.8	7.9	7.2	8.3	8	7.2	80
86	6.4	7.2		8.6	7.7	7.1	8.7	7.7	7.1	8.6	7.7	7.1	8.4	7.7	7.1	7.2	7.8	7.1	86
92				8.2	7.8	7.1	8.4	7.6	7.1	8	7.6	7.1	7.1	7.6	7.1	6	7.5	7.1	92
98				8	7.4	7.1	7.8	7.5	7	6.9	7.5	7	6.1	7.5	7	5	6.7	7	98
104				7	7.3	7	6.8	7.4	7	5.9	7.2	7	5.1	6.6	7	4	5.6	6.9	104
110				6.1	6.9	7	5.8	6.8	7	5	6.3	7	4.3	5.6	6.6	3.2	4.7	6	110
116				5.2	6.1	6.6	5	6	6.6	4.3	5.4	6.3	3.5	4.8	5.8		3.8	5	116
122				4.5	5.3	5.8	4.2	5.1	5.8	3.6	4.6	5.4	2.8	4	4.9		3.1	4.1	122
128				3.8	4.5	4.8	3.5	4.3	4.9	2.9	3.8	4.5		3.3	4.1			3.3	128
134				3.2	3.8	4	2.9	3.6	4.1		3.1	3.7			3.3				134
140				2.7	3.1			3	3.3			3							140
146				2.2					2.6										146

TAB 1821122 / 1820142 / 1820162

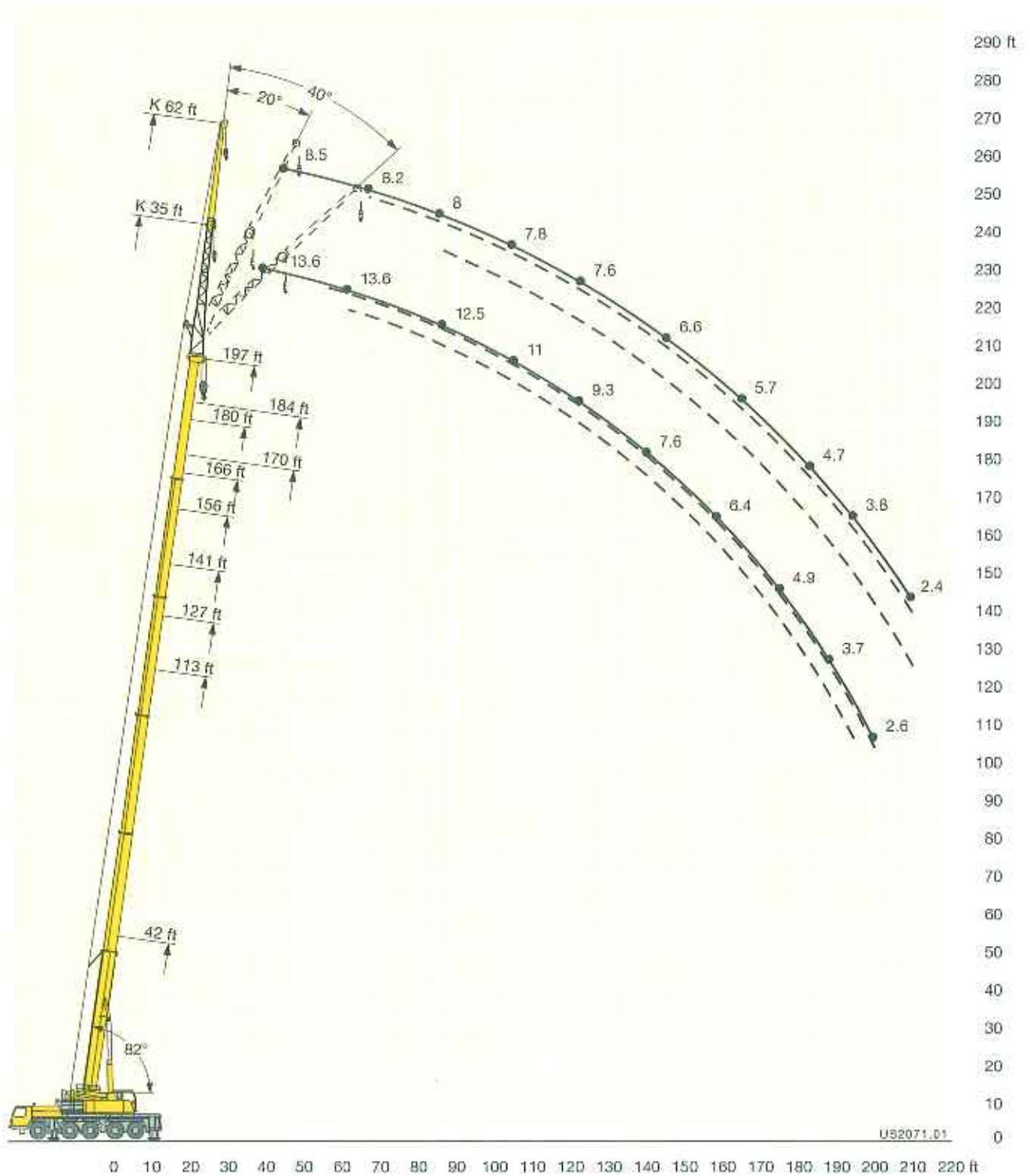


ft	166 ft			170 ft			180 ft			184 ft			197 ft			ft			
	62 ft			62 ft			62 ft			62 ft			62 ft						
	0°	20°	40°	0°	20°	40°	0°	20°	40°	0°	20°	40°	0°	20°	40°				
35	9			9.7															35
38	9			9.7				8.4			8.6								38
44	9			9.6				8.4			8.5				7.7				44
50	8.9			9.4				8.4			8.4				7.7				50
56	8.8	7.7		9.2	8.3			8.3			8.3				7.6				56
62	8.6	7.7		9.1	8.3			8.2	7.7		8.2	7.7			7.5				62
68	8.5	7.7		8.8	8.1			8.1	7.6		8.1	7.7			7.5	7.1			68
74	8.3	7.7	7.1	8.3	8	7.1		7.9	7.5		7.6	7.6			7	7.1			74
80	8	7.6	7.1	7.5	7.8	7.1		7.2	7.4	6.8	6.1	7.5	6.9	5.7	7.1				80
86	6.9	7.5	7	6.2	7.5	7.1		5.9	7.3	6.8	4.8	7.2	6.9	4.5	6.9	6.8			86
92	5.7	7.4	7	5	7	7		4.8	6.8	6.8		5.9	6.9		5.6	6.8			92
98	4.7	6.5	6.9	4	5.9	7		3.8	5.7	6.8		4.8	6.5		4.4	6.2			98
104	3.8	5.4	6.7	3.1	4.8	6.2			4.6	6.1		3.7	5.4		3.4	5.1			104
110	2.9	4.5	5.8		3.9	5.2			3.7	5.1			4.3			4.1			110
116		3.6	4.8		3	4.3			2.9	4.1			3.3			3.1			116
122		2.9	3.9			3.4				3.3									122
128			3.2																128

TAB 1821122 / 1820142 / 1820162

maximcrane.com

# Lifting heights Hauteurs de levage



maximcrane.com

# Lifting capacities on the hydraulically or mechanically variable folding jib with boom extension

## Forces de levage à la fléchette pliante à variation hydraulique ou mécanique avec télescope rallongé



ft	42 ft + 23 ft			156 ft + 23 ft			166 ft + 23 ft			170 ft + 23 ft			180 ft + 23 ft			184 ft + 23 ft			197 ft + 23 ft			ft
	35 ft			35 ft			35 ft			35 ft			35 ft			35 ft			35 ft			
	0°	20°	40°	0°	20°	40°	0°	20°	40°	0°	20°	40°	0°	20°	40°	0°	20°	40°	0°	20°	40°	
12	14.6																					12
14	14.5																					14
17	14.4	14.6																				17
20	14.3	14.5																				20
23	14.1	14.4																				23
26	13.6	13.9																				26
29	13.1	13.2	13.3																			29
32	12.6	12.5	12.8	14.6																		32
35	12	11.9	12.1	14.6			12.1			12.6												35
38	11.4	11.4	11.4	14.5			12.1			12.6			10.7			11.2						38
44	10.2	10.3	10.4	14.4			12.1			12.6			10.7			11.2			9.5			44
50	9	9.4	9.5	14.3	13.8		12.1	12.1		12.6	12.6		10.7			11.1			9.4			50
56	7.9	8.5	8.8	14.1	13.4	12.4	12.1	12		12.6	12.6		10.7	10.7		11.1	11.2		9.4	9.5		56
62	7	7.7	8.1	13.8	12.8	12.1	12.1	11.7	10.7	12.5	12.3	11.2	10.7	10.7	10.2	11.1	11.2	10.7	9.4	9.5		62
68	6.3	6.8	7.3	13.3	12.2	11.5	11.9	11.2	10.6	12.3	11.8	11.1	10.7	10.6	10.1	11	11	10.6	9.4	9.5	9.2	68
74	5.6	6	6.3	12.7	11.7	11	11.5	10.8	10.2	12	11.4	10.8	10.6	10.3	9.9	10.9	10.7	10.3	9.4	9.4	9.2	74
80	4.9	5.3	5.6	12.2	11.2	10.6	11.1	10.3	9.9	11.7	11	10.4	10.4	10	9.6	10.7	10.4	10	9.3	9.3	9.2	80
86	4.5			11.7	10.7	10.1	10.6	9.9	9.5	11.3	10.5	10	10.1	9.7	9.3	10.6	10.1	9.7	9.1	9.2	9	86
92				11.1	10.3	9.8	10.1	9.5	9.2	10.9	10.1	9.7	9.7	9.3	9.1	10.3	9.7	9.4	9	8.9	8.7	92
98				10.6	9.9	9.5	9.6	9.2	8.9	10.4	9.8	9.3	9.4	9	8.8	9.9	9.4	9.1	8.8	8.7	8.5	98
104				10	9.5	9.2	9.1	8.9	8.7	10	9.4	9.1	9	8.7	8.6	9.5	9.2	8.9	8.6	8.5	8.3	104
110				9.4	9.1	8.8	8.7	8.6	8.4	9.5	9.1	8.8	8.6	8.5	8.3	9.1	8.9	8.7	8.3	8.2	8.1	110
116				8.9	8.7	8.6	8.3	8.2	8.2	9	8.7	8.6	8.2	8.2	8.1	8.7	8.6	8.5	8	7.9	7.9	116
122				8.3	8.3	8.3	7.9	7.9	7.9	8.5	8.4	8.3	7.9	7.9	7.9	8.4	8.4	8.3	7.7	7.7	7.7	122
128				7.9	7.9	8	7.4	7.5	7.6	8.1	8.1	8	7.5	7.6	7.6	8	8.1	8	7.4	7.4	7.4	128
134				7.5	7.6	7.7	7	7.2	7.3	7.7	7.7	7.8	7.2	7.3	7.4	7.7	7.7	7.8	7	7.1	7.2	134
140				7.1	7.2	7.3	6.7	6.8	7	7.3	7.4	7.5	6.9	7	7.1	7.3	7.4	7.5	6.7	6.8	6.9	140
146				6.7	6.8	6.9	6.3	6.5	6.6	7	7.1	7.2	6.5	6.7	6.8	7	7.1	7.2	6.3	6.5	6.6	146
152				6.3	6.4	6.5	5.9	6.1	6.2	6.6	6.7	6.8	6.2	6.3	6.5	6.7	6.8	6.9	6	6.2	6.3	152
158				6	6.1	6.2	5.6	5.7	5.9	6.3	6.4	6.5	5.9	6	6.2	6.4	6.5	6.6	5.6	5.8	6	158
164				5.7	5.8	5.9	5.3	5.4	5.5	6	6.1	6.2	5.6	5.7	5.8	6.1	6.2	6.3	5.3	5.5	5.7	164
170				5.4	5.5	5.5	5	5.1	5.2	5.8	5.8	5.9	5.3	5.4	5.5	5.5	5.9	6	5	5.2	5.4	170
176				5.1	5.2	5.2	4.7	4.8	4.9	5.5	5.6	5.6	5.1	5.1	5.2	4.9	5.3	5.6	4.6	4.9	5	176
182				4.9	4.9	5	4.4	4.5	4.5	5.2	5.3	5.4	4.8	4.9	5	4.3	4.7	5	4	4.4	4.7	182
188				4.6	4.7		4.1	4.2	4.2	4.7	5	5	4.6	4.6	4.7	3.7	4.1	4.3	3.5	3.9	4.1	188
194				4.4	4.5		3.9	4	4	4.1	4.4	4.5	4.1	4.3	4.4	3.1	3.5	3.6	2.9	3.3	3.5	194
200										3.8	3.8				3.5	3.8	3.9					200
210															2.7	2.9						210

TAB 1825431 / 1825151 / 1825171

maximcrane.com

# Lifting capacities on the hydraulically or mechanically variable folding jib with boom extension

## Forces de levage à la flèche pliante à variation hydraulique ou mécanique avec télescope rallongé

ft	42 - 194 ft			23 ft			62 ft			360°			92800 lbs			85%			ft				
	42 ft + 23 ft			156 ft + 23 ft			166 ft + 23 ft			170 ft + 23 ft			180 ft + 23 ft			184 ft + 23 ft				194 ft + 23 ft			
	62 ft			62 ft			62 ft			82 ft			62 ft			62 ft				62 ft			
	0°	20°	40°	0°	20°	40°	0°	20°	40°	0°	20°	40°	0°	20°	40°	0°	20°	40°	0°	20°	40°		
14	9.2																					14	
17	9.2																						17
20	9.1																						20
23	9.1																						23
26	9																						26
29	8.9																						29
32	8.8																						32
35	8.7	8.5																					35
38	8.6	8.5		9																			38
44	8.2	8.2		9			7.8			8			7.3			7.5							44
50	7.7	7.7	7.5	9			7.8			8			7.3			7.5			6.6				50
56	7.2	7.2	7.3	9			7.8			8			7.3			7.5			6.6				56
62	6.7	6.8	7	8.9	8.3		7.8			8			7.3			7.5			6.6				62
68	6.2	6.3	6.5	8.8	8.3		7.8	7.8		8	7.8		7.3	7		7.4	7.3		6.6				68
74	5.8	5.9	6.1	8.7	8.2		7.8	7.7		8	7.8		7.3	7		7.4	7.3		6.6	6.3			74
80	5.3	5.6	5.8	8.5	8	7.3	7.8	7.5	6.8	8	7.7	7	7.3	7		7.4	7.3		6.6	6.3			80
86	4.9	5.3	5.5	8.4	7.7	7.3	7.7	7.3	6.8	8	7.6	7	7.3	7	6.6	7.3	7.3	6.8	6.6	6.3			86
92	4.4	4.9	5.2	8.1	7.4	7	7.6	7	6.7	7.9	7.3	6.9	7.2	6.9	6.5	7.3	7.1	6.8	6.5	6.3			92
98	4	4.6	4.9	7.8	7.1	6.8	7.3	6.8	6.5	7.7	7.1	6.7	7.1	6.7	6.4	7.2	6.9	6.6	6.5	6.3	6.1		98
104	3.6	4	4.3	7.5	6.9	6.6	7.1	6.6	6.3	7.5	6.9	6.5	6.9	6.5	6.2	7.1	6.7	6.4	6.5	6.3	6		104
110	3.3	3.6	4.2	7.2	6.7	6.4	6.9	6.4	6.1	7.2	6.6	6.4	6.8	6.3	6.1	7	6.5	6.3	6.4	6.1	5.9		110
116	3	3.2		7	6.5	6.2	6.6	6.2	6	6.9	6.4	6.2	6.6	6.1	5.9	6.8	6.3	6.1	6.3	5.9	5.8		116
122				6.7	6.3	6.1	6.4	6	5.8	6.7	6.2	6	6.3	5.9	5.7	6.6	6.1	5.9	6.1	5.8	5.6		122
128				6.5	6.1	5.9	6.2	5.8	5.7	6.5	6.1	5.9	6.1	5.8	5.6	6.4	6	5.8	6	5.7	5.5		128
134				6.3	5.9	5.7	6	5.6	5.5	6.3	5.9	5.7	5.9	5.6	5.5	6.2	5.8	5.7	5.8	5.5	5.4		134
140				6.1	5.7	5.6	5.8	5.5	5.4	6.1	5.7	5.6	5.8	5.5	5.4	6	5.7	5.6	5.7	5.4	5.3		140
146				5.8	5.6	5.5	5.6	5.3	5.3	5.9	5.6	5.5	5.6	5.3	5.2	5.9	5.5	5.4	5.5	5.3	5.2		146
152				5.6	5.4	5.3	5.4	5.2	5.1	5.7	5.4	5.3	6.4	5.2	5.1	5.7	5.4	5.3	5.3	5.1	5.1		152
158				5.3	5.2	5.2	5.1	5.1	5	5.5	5.3	5.3	5.3	5.1	5	5.5	5.3	5.2	5.1	5	5		158
164				5.1	5.1	5.1	4.9	4.9	4.9	5.3	5.1	5.1	5	4.9	4.9	5.4	5.2	5.1	4.9	4.9	4.9		164
170				4.9	4.9	5	4.6	4.7	4.7	5.1	5	5	4.8	4.8	4.8	5.1	5	5	4.7	4.7	4.8		170
176				4.6	4.8	4.9	4.3	4.5	4.6	4.9	4.8	4.9	4.6	4.7	4.7	4.9	4.9	4.9	4.6	4.6	4.7		176
182				4.4	4.6	4.7	4	4.2	4.4	4.6	4.7	4.8	4.3	4.5	4.6	4.6	4.7	4.8	4.4	4.5	4.6		182
188				4.2	4.3	4.4	3.8	4	4.2	4.4	4.5	4.6	4.1	4.2	4.4	4.2	4.6	4.7	3.9	4.3	4.5		188
194				3.9	4.1	4.2	3.6	3.8	3.9	4.2	4.3	4.5	3.9	4	4.2	3.6	4.3	4.5	3.5	4.1	4.3		194
200				3.7	3.8	4	3.3	3.6	3.7	4	4.2	4.3	3.7	3.8	4	3.2	3.8	4.2	3	3.7	4		200
210				3.4	3.5		3	3.2	3.2	3.4	3.8	3.9	3.2	3.5	3.6	2.4	3	3.3	2.3	2.9	3.2		210
220							2.7	2.8		2.6	3		2.5	3	3.1								220
230							2.4			2.2			2.2		2.2								230

TAB 1825431 / 1825151 / 1825171

# Lifting capacities on the hydraulically or mechanically variable folding jib with boom extension

## Forces de levage à la fléchette pliante à variation hydraulique ou mécanique avec télescope rallongé

		42 - 197 ft			23 ft			35 ft			360°			14500 lbs			85%						
ft	ft	42 ft + 23 ft			156 ft + 23 ft			166 ft + 23 ft			170 ft + 23 ft			180 ft + 23 ft			184 ft + 23 ft			197 ft + 23 ft			ft
		35 ft			35 ft			35 ft			35 ft			35 ft			35 ft						
		0°	20°	40°	0°	20°	40°	0°	20°	40°	0°	20°	40°	0°	20°	40°	0°	20°	40°	0°	20°	40°	
12	13.2																					12	
14	13.2																						14
17	13.1	13.2																					17
20	13	13.2																					20
23	12.8	13.1																					23
26	12.4	12.6																					26
29	11.9	12	12.1																				29
32	11.4	11.4	11.6	13.2																			32
35	10.9	10.9	11	13.2				11			11.5												35
38	10.4	10.3	10.4	13.2				11			11.5			9.7				10.1					38
44	9.3	9.4	9.5	13.1				11			11.5			9.7				10.1			8.6		44
50	8.2	8.6	8.7	13	12.5			11	11		11.5	11.5		9.7				10.1			8.6	8.6	50
56	7.2	7.8	8	12.8	12.2	11.2		11	10.9		11.5	11.4		9.7	9.7			10.1	10.1		8.6	8.6	56
62	6.4	7	7.4	12.4	11.7	11		11	10.6	9.7	11.2	11.2	10.1	9.7	9.7	9.3		9.7	10.1	9.7	8.6	8.6	62
68	5.7	6.2	6.6	11.2	11.1	10.5	10.4	10.2	9.6	10	10.7	10.1	9.2	9.6	9.2	8.5	9.7	9.6	7.9	8.6	7.9	8.6	68
74	5.1	5.5	5.8	9.3	10.4	10	9	9.7	9.3	8.2	9.7	9.8	7.9	9.1	9	6.8	8.4	9.2	6.4	8	6.4	8.3	74
80	4.5	4.8	5.1	7.8	9.1	9.5	7.4	8.8	8.9	6.7	8.1	9.2	6.4	7.8	8.6	5.3	6.8	8	4.9	6.4	7.7		80
86	4.1			6.4	7.6	8.6	6.1	7.3	8.3	5.3	6.6	7.6	5.1	6.4	7.4		5.4	6.5		5	6.2		86
92				5.2	6.3	7.2	4.9	6	6.9	4.2	5.3	6.3		5.1	6.1			5.2			4.9		92
98				4.1	5.1	5.9	3.9	4.9	5.7	3.1	4.2	5.1		4	4.9			4			3.7		98
104				3.2	4.1	4.9		3.9	4.7		3.2	4		3.1	3.9								104
110					3.2	3.9		3	3.7			3.1			2.9								110
116						3																	116

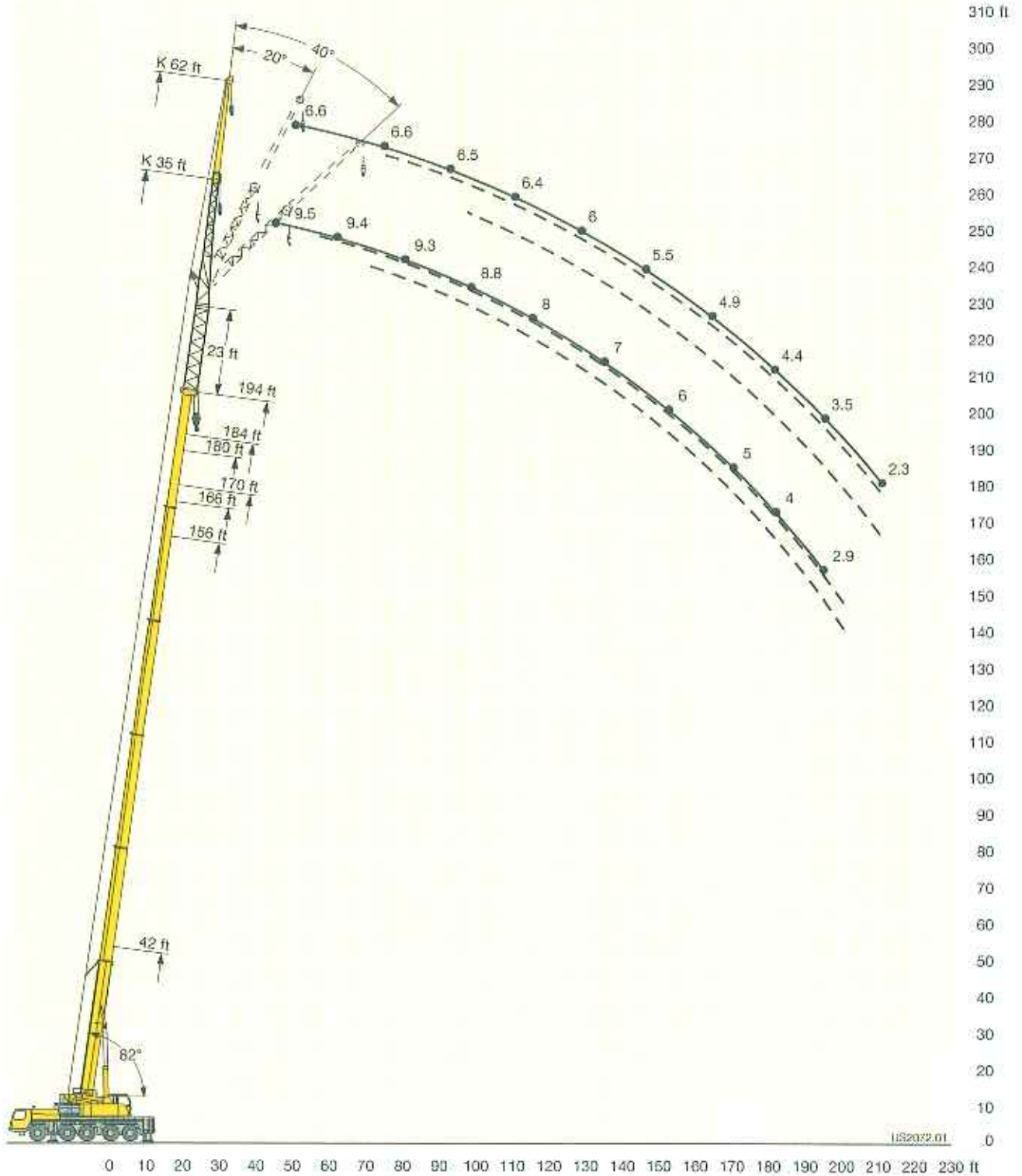
JAB 1821242 / 1820262 / 1820282

		42 - 197 ft			23 ft			62 ft			360°			14600 lbs			85%						
ft	ft	42 ft + 23 ft			156 ft + 23 ft			166 ft + 23 ft			170 ft + 23 ft			180 ft + 23 ft			184 ft + 23 ft			194 ft + 23 ft			ft
		62 ft			62 ft			62 ft			62 ft			62 ft			62 ft						
		0°	20°	40°	0°	20°	40°	0°	20°	40°	0°	20°	40°	0°	20°	40°	0°	20°	40°	0°	20°	40°	
14	8.4																						14
17	8.4																						17
20	8.3																						20
23	8.2																						23
26	8.2																						26
29	8.1																						29
32	8																						32
35	7.9	7.7																					35
38	7.8	7.7		8.2																			38
44	7.4	7.5		8.2			7.1			7.3				6.6			6.8						44
50	7	7	6.8	8.2			7.1			7.3				6.6			6.8			6			50
56	6.5	6.6	6.7	8.1			7.1			7.3				6.6			6.8			6			56
62	6.1	6.1	6.3	8.1	7.5		7.1			7.3				6.6			6.8			6			62
68	5.7	5.7	5.9	8	7.5		7.1	7.1		7.3	7.1			6.6	6.4		6.8	6.6		6			68
74	5.3	5.4	5.6	7.9	7.4		7.1	7		7.3	7.1			6.6	6.4		6.5	6.6		5.9	5.7		74
80	4.9	5.1	5.2	7.6	7.2	6.6	7	6.8	6.2	7	7	6.4		6.4	6.4		5.7	6.6		5.4	5.7		80
86	4.4	4.6	5	6.7	7	6.6	6.4	6.6	6.2	5.7	6.9	6.4	5.4	6.4	6		4.4	6.5	6.2				86
92	4	4.5	4.7	5.6	6.7	6.4	5.3	6.4	6.1	4.6	6.6	6.3	4.3	6.2	6			5.5	6.2				92
98	3.6	4.1	4.4	4.6	6.3	6.2	4.2	6	5.9	3.6	5.5	6.1	3.3	5.3	5.8			4.4	6		4.2	5.5	98
104	3.3	3.7	3.9	3.6	5.3	6	3.3	5.1	5.7		4.5	5.9		4.2	5.7			3.4	5.1		3.2	4.8	104
110	3	3.2	3.8		4.4	5.6		4.1	5.3		3.6	5		3.3	4.8				4.1			3.9	110
116	2.7	3			3.6	4.8		3.3	4.6			4			3.9				3.1			3	116
122					2.8	3.9			3.7			3.2			3								122
128									2.9														128

JAB 1821242 / 1820262 / 1820282

maximcrane.com

# Lifting heights Hauteurs de levage



# Lifting capacities on the hydraulically or mechanically variable folding jib with boom extension

## Forces de levage à la flèche pliante à variation hydraulique ou mécanique avec télescope rallongé

ft	42 - 194 ft		46 ft		35 ft		300°		92000 lbs		85%		ft										
	42 ft + 46 ft		156 ft + 46 ft		166 ft + 46 ft		170 ft + 46 ft		180 ft + 46 ft		184 ft + 46 ft			194 ft + 46 ft									
	35 ft		35 ft		35 ft		35 ft		35 ft		35 ft			35 ft									
	0°	20°	40°	0°	20°	40°	0°	20°	40°	0°	20°	40°	0°	20°	40°	0°	20°	40°					
14	9.7																		14				
17	9.7																		17				
20	9.7																		20				
23	9.7																		23				
26	9.6	9.7																	26				
29	9.4	9.6																	29				
32	9.2	9.4	9																32				
35	8.9	9.1	9																35				
38	8.5	8.7	8.8	9.7															38				
44	7.9	8	8.2	9.7			8.3			8.5		7.3			7.5				44				
50	7.3	7.4	7.5	9.7	9.7		8.3			8.5		7.3			7.5			6.6	50				
56	6.7	6.8	7	9.6	9.5		8.3	8.3		8.5	8.5	7.3	7.3		7.5			6.6	56				
62	6.2	6.3	6.4	9.4	9.2	8.7	8.3	8.3	8	8.5	8.5	8.3	7.3	7.3	7.5	7.5		6.6	6.6	62			
68	5.8	5.9	6	9.2	8.8	8.6	8.2	8.1	7.9	8.5	8.4	8.2	7.3	7.3	7.3	7.5	7.5	7.5	6.6	6.6	68		
74	5.3	5.4	5.6	8.8	8.5	8.2	8.1	7.9	7.7	8.3	8.2	8	7.3	7.3	7.3	7.5	7.5	7.5	6.5	6.6	6.6	74	
80	4.8	5	5.2	8.5	8.1	7.9	7.8	7.6	7.4	8.1	7.9	7.7	7.3	7.2	7.2	7.4	7.4	7.4	6.5	6.6	6.6	80	
86	4.3	4.6	4.8	8.1	7.8	7.6	7.5	7.3	7.1	7.9	7.6	7.4	7.2	7	6.9	7.3	7.3	7.2	6.5	6.5	6.5	86	
92	3.9	4.1	4.4	7.8	7.4	7.3	7.3	7	6.9	7.7	7.3	7.2	7	6.8	6.7	7.2	7.1	6.9	6.4	6.5	6.5	92	
98	3.4	3.7	3.8	7.5	7.1	7	7	6.7	6.6	7.4	7.1	6.9	6.8	6.6	6.5	7.1	6.9	6.7	6.3	6.3	6.3	98	
104	3	3.2	3.5	7.2	6.9	6.7	6.8	6.5	6.4	7.1	6.8	6.7	6.6	6.4	6.3	6.9	6.6	6.5	6.3	6.1	6.1	6.1	104
110	2.7	2.8		6.9	6.6	6.5	6.5	6.3	6.1	6.9	6.6	6.4	6.4	6.1	6.1	6.7	6.4	6.3	6.1	6	5.9	5.9	110
116				6.6	6.4	6.3	6.2	6.1	5.9	6.6	6.4	6.2	6.2	6	5.9	6.5	6.2	6.1	6	5.8	5.7	5.7	116
122				6.4	6.1	6.1	6	5.8	5.8	6.4	6.1	6	6	5.8	5.7	6.2	6	5.9	5.8	5.6	5.6	5.6	122
128				6.2	5.9	5.9	5.8	5.6	5.6	6.2	5.9	5.8	5.8	5.6	5.5	6	5.8	5.7	5.6	5.4	5.4	5.4	128
134				5.9	5.7	5.7	5.6	5.4	5.4	5.9	5.7	5.7	5.6	5.4	5.4	5.8	5.6	5.6	5.5	5.3	5.3	5.3	134
140				5.7	5.5	5.5	5.4	5.3	5.2	5.7	5.5	5.5	5.4	5.2	5.2	5.7	5.5	5.4	5.3	5.1	5.1	5.1	140
146				5.4	5.3	5.3	5.2	5.1	5.1	5.5	5.4	5.3	5.2	5.1	5.1	5.5	5.3	5.3	5.1	5	5	5	146
152				5.1	5.1	5.1	5	4.9	4.9	5.3	5.2	5.2	5	5	4.9	5.3	5.2	5.1	4.9	4.8	4.8	4.8	152
158				4.9	4.9	4.9	4.7	4.7	4.7	5.1	5	5	4.9	4.8	4.8	5.1	5	5	4.7	4.7	4.7	4.7	158
164				4.6	4.7	4.7	4.4	4.4	4.5	4.9	4.8	4.8	4.6	4.7	4.7	4.9	4.9	4.9	4.5	4.5	4.6	4.6	164
170				4.4	4.5	4.6	4.1	4.2	4.3	4.6	4.6	4.7	4.4	4.4	4.5	4.7	4.7	4.7	4.3	4.4	4.4	4.4	170
176				4.2	4.2	4.3	3.8	4	4	4.4	4.4	4.5	4.1	4.2	4.3	4.4	4.5	4.6	4.1	4.2	4.3	4.3	176
182				3.9	4	4.1	3.6	3.7	3.8	4.2	4.2	4.3	3.9	4	4	3.9	4.3	4.4	3.7	4	4.1	4.1	182
188				3.7	3.8	3.8	3.3	3.5	3.5	4	4	4.1	3.6	3.7	3.8	3.4	3.8	4	3.2	3.6	3.8	3.8	188
194				3.5	3.5	3.6	3.1	3.2	3.3	3.7	3.8	3.9	3.4	3.5	3.6	2.9	3.3	3.6	2.7	3.1	3.3	3.3	194
200				3.3	3.3	3.3	2.9	3	3	3.4	3.6	3.7	3.1	3.3	3.4		2.7	2.9		2.6	2.8	2.8	200
210				2.9	3		2.5	2.6	2.6	2.5	2.8	2.9	2.4	2.7	2.9								210
220							2.2	2.3															220

TAB 1825131 / 1825211 / 1825231

# Lifting capacities on the hydraulically or mechanically variable folding jib with boom extension

## Forces de levage à la flèche pliante à variation hydraulique ou mécanique avec télescope rallongé

		42-194 ft			46 ft			62 ft			360°			82600 lbs			85%												
		42 ft + 46 ft			156 ft + 46 ft			166 ft + 46 ft			170 ft + 46 ft			180 ft + 46 ft			184 ft + 46 ft			194 ft + 46 ft									
		62 ft			62 ft			62 ft			62 ft			62 ft			62 ft			62 ft									
ft		0°	20°	40°	0°	20°	40°	0°	20°	40°	0°	20°	40°	0°	20°	40°	0°	20°	40°	0°	20°	40°	0°	20°	40°	ft			
17		6.6																							17				
20		6.6																								20			
23		6.6																								23			
26		6.6																								26			
29		6.6																								29			
32		6.5																								32			
35		6.5																								35			
38		6.4	6.6																							38			
44		6.2	6.5		6.6																					44			
50		6	6.3		6.6			5.6				5.8				4.9			5.1							50			
56		5.6	5.9	5.8	6.5			5.6			5.8			4.9			5.1			4.4						56			
62		5.2	5.4	5.7	6.5			5.6			5.8			4.9			5.1			4.4						62			
68		4.9	5	5.3	6.5	6.3		5.6			5.8			4.9			5.1			4.4						68			
74		4.5	4.7	4.9	6.4	6.3		5.6	5.6		5.8	5.8		4.9	4.9		5.1	5.1		4.4						74			
80		4.2	4.4	4.6	6.3	6.2		5.6	5.6		5.7	5.8		4.9	4.9		5	5.1		4.4	4.4					80			
86		3.9	4.1	4.3	6.1	6	5.6	5.5	5.6	5.1	5.6	5.8	5.3	4.9	4.9		5	5.1		4.3	4.4					86			
92		3.7	3.8	4	6	5.8	5.6	5.4	5.4	5.1	5.6	5.6	5.3	4.9	4.9		5	5.1		4.3	4.4					92			
98		3.5	3.6	3.7	5.8	5.5	5.4	5.3	5.2	5.1	5.5	5.4	5.3	4.9	4.9	4.9	4.9	5.1	5.1	4.3	4.4						98		
104		3.2	3.4	3.5	5.6	5.3	5.2	5.2	5	4.9	5.5	5.2	5.1	4.9	4.8	4.8	4.9	5	4.9	4.3	4.4	4.4					104		
110		3	3.2	3.3	5.4	5.1	5	5.1	4.8	4.7	5.3	5	4.9	4.9	4.7	4.8	4.9	4.8	4.8	4.3	4.4	4.4	4.4				110		
116		2.8	3	3.1	5.2	4.9	4.8	4.9	4.6	4.6	5.1	4.9	4.7	4.8	4.6	4.5	4.8	4.7	4.6	4.3	4.3	4.3	4.3	4.3				116	
122		2.7	2.8	2.8	5	4.7	4.6	4.7	4.5	4.4	4.9	4.7	4.6	4.6	4.4	4.3	4.7	4.6	4.5	4.2	4.2	4.2	4.2	4.2				122	
128		2.5	2.6	2.5	4.7	4.5	4.5	4.5	4.3	4.2	4.7	4.5	4.4	4.4	4.2	4.2	4.6	4.4	4.3	4.1	4.1	4.1	4.1	4.1				128	
134		2.4	2.4		4.6	4.4	4.3	4.3	4.1	4.1	4.6	4.3	4.3	4.3	4.1	4	4.4	4.3	4.2	4	4	4	4	4				134	
140					4.4	4.2	4.1	4.1	4	4	4.4	4.2	4.1	4.1	4	3.9	4.3	4.1	4.1	3.9	3.8	3.8	3.8	3.8				140	
146					4.2	4	4	4	3.8	3.8	4.2	4	4	4	3.8	3.8	4.1	4	3.9	3.8	3.7	3.7	3.7	3.7				146	
152					4.1	3.9	3.9	3.9	3.7	3.7	4.1	3.9	3.9	3.8	3.7	3.7	4	3.9	3.8	3.7	3.6	3.6	3.6	3.6				152	
158					3.9	3.8	3.8	3.7	3.6	3.6	3.9	3.8	3.8	3.7	3.6	3.6	3.9	3.7	3.7	3.6	3.5	3.5	3.5	3.5				158	
164					3.8	3.6	3.6	3.6	3.5	3.5	3.8	3.7	3.6	3.6	3.5	3.4	3.8	3.6	3.6	3.5	3.4	3.4	3.4	3.4				164	
170					3.6	3.5	3.5	3.4	3.4	3.4	3.7	3.5	3.5	3.5	3.4	3.4	3.7	3.5	3.5	3.4	3.3	3.3	3.3	3.3				170	
176					3.5	3.4	3.4	3.3	3.2	3.2	3.6	3.4	3.4	3.4	3.2	3.3	3.5	3.4	3.4	3.3	3.2	3.2	3.2	3.2				176	
182					3.4	3.3	3.3	3.1	3.1	3.2	3.4	3.3	3.3	3.2	3.2	3.4	3.3	3.3	3.3	3.2	3.1	3.1	3.1	3.1				182	
188					3.2	3.2	3.2	3	3	3	3.3	3.2	3.2	3.1	3	3.1	3.3	3.2	3.2	3.1	3	3.1	3.1	3.1				188	
194					3.1	3.1	3.1	2.8	2.9	2.9	3.2	3.1	3.2	2.9	2.9	3	3	3.1	3.2	2.9	3	3	3	3				194	
200					2.9	3	3	2.6	2.8	2.8	3.1	3	3.1	2.8	2.8	2.9	2.7	3	3.1	2.5	2.9	2.9	2.9	2.9				200	
210					2.6	2.7	2.7	2.3	2.5	2.6	2.8	2.9	3	2.5	2.6	2.7		2.6	2.9		2.4	2.7	2.7	2.7				210	
220					2.3	2.4	2.5		2.1	2.2		2.6	2.7		2.4	2.5												220	
230					2	2.1	2.2					2.2																230	

IAB 1625191 / 1625211 / 1625231

# Lifting capacities on the hydraulically or mechanically variable folding jib with boom extension

## Forces de levage à la fléchette pliante à variation hydraulique ou mécanique avec télescope rallongé

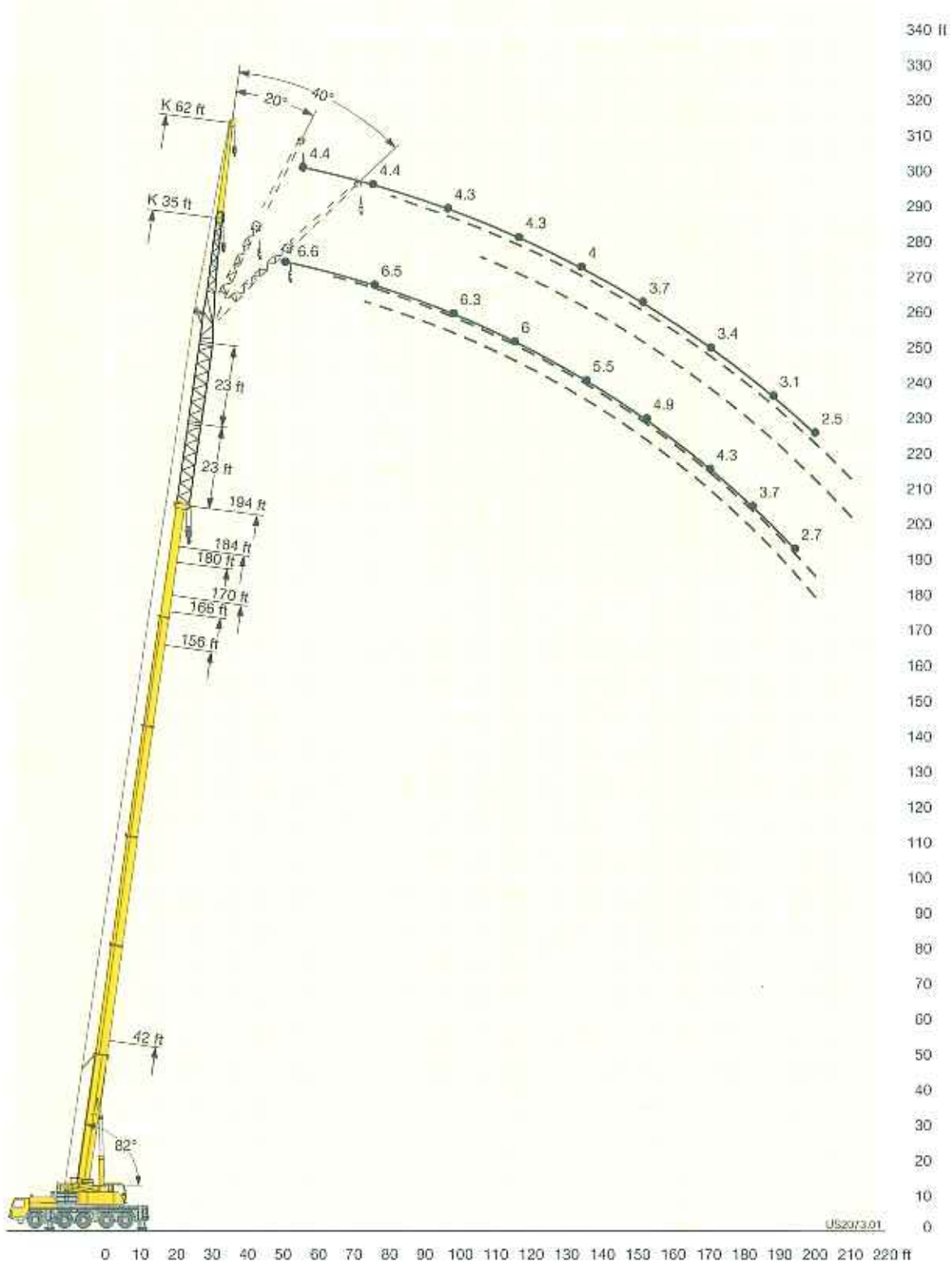
		42 - 104 ft			48 ft			35 ft			360°			14000 lbs			85%						
ft	ft	42 ft + 46 ft			156 ft + 46 ft			166 ft + 46 ft			170 ft + 46 ft			180 ft + 46 ft			184 ft + 46 ft			194 ft + 46 ft			ft
		35 ft			35 ft			35 ft			35 ft			35 ft			35 ft						
		0°	20°	40°	0°	20°	40°	0°	20°	40°	0°	20°	40°	0°	20°	40°	0°	20°	40°	0°	20°	40°	
14		8.8																				14	
17		8.8																				17	
20		8.8																				20	
23		8.8																				23	
26		8.7	8.8																			26	
29		8.6	8.8																			29	
32		8.4	8.5	8.2																		32	
35		8.1	8.2	8.2																		35	
38		7.7	7.9	8	8.8																	38	
44		7.2	7.3	7.5	8.8			7.5			7.7			6.6			6.8					44	
50		6.6	6.7	6.9	8.8	8.8		7.5			7.7			6.8			6.8			6		50	
56		6.1	6.2	6.3	8.7	8.7		7.5	7.5		7.7	7.7		6.6	6.6		6.8			6		56	
62		5.7	5.7	5.9	8.6	8.4	7.9	7.5	7.5	7.3	7.7	7.7	7.5	6.6	6.6		6.8	6.8		6	6	62	
68		5.2	5.3	5.5	8.4	8	7.8	7.5	7.4	7.2	7.7	7.7	7.5	6.6	6.6	6.6	6.8	6.8	6.8	6	6	68	
74		4.8	4.9	5.1	8	7.7	7.5	7.4	7.2	7	7.3	7.5	7.3	6.5	6.6	6.6	6.3	6.8	6.8	5.7	6	74	
80		4.3	4.6	4.7	7.3	7.4	7.2	6.9	6.9	6.7	6.2	7.1	7	5.9	6.5	6.5	4.9	6.3	6.7	4.6	5.7	80	
86		3.9	4.2	4.4	5.9	7	6.9	5.6	6.5	6.5	4.9	6.2	6.7	4.6	5.9	6.3	5	6.1		4.7	5.8	86	
92		3.5	3.8	4	4.8	5.9	6.6	4.4	5.6	6.2		5	6		4.7	5.7		4.8			4.6	92	
98		3.1	3.3	3.5	3.7	4.8	5.6	3.4	4.5	5.3		3.9	4.8		3.6	4.5		3.7			3.5	98	
104		2.7	2.9	3.1		3.8	4.8		3.5	4.3			3.7									104	
110		2.4	2.5			3.6			3.4													110	

TAB 1821302 / 1820322 / 1820342

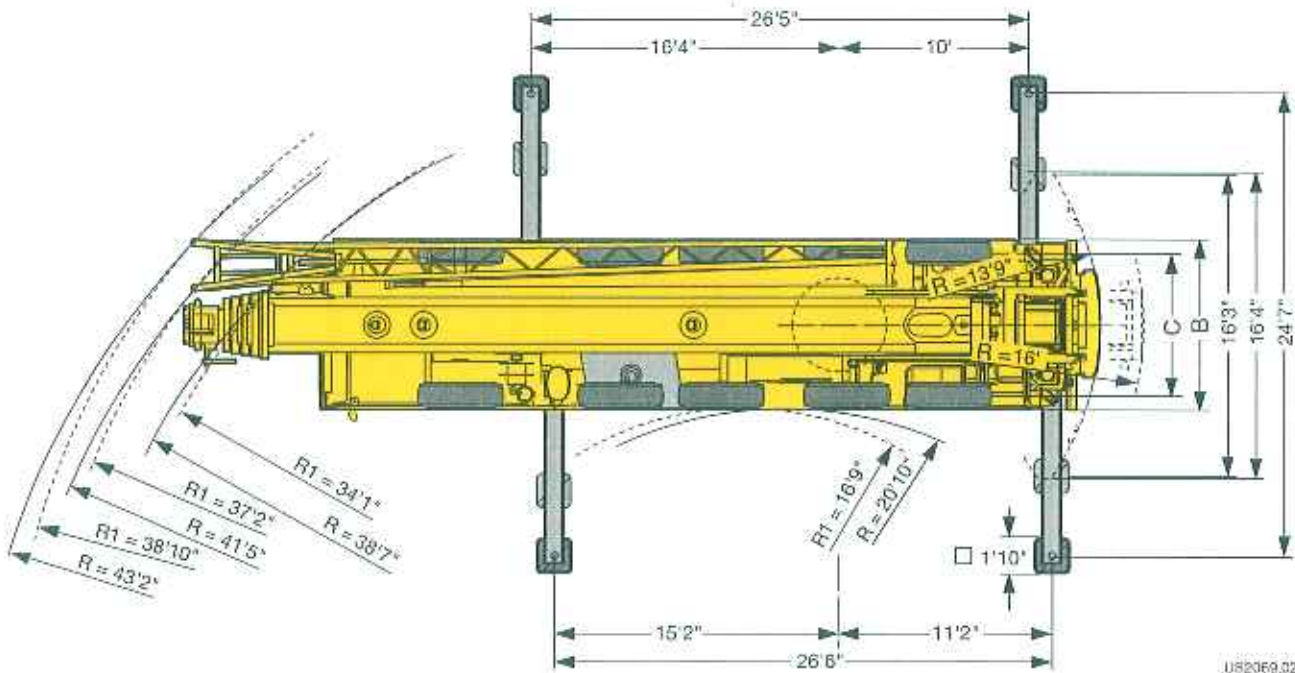
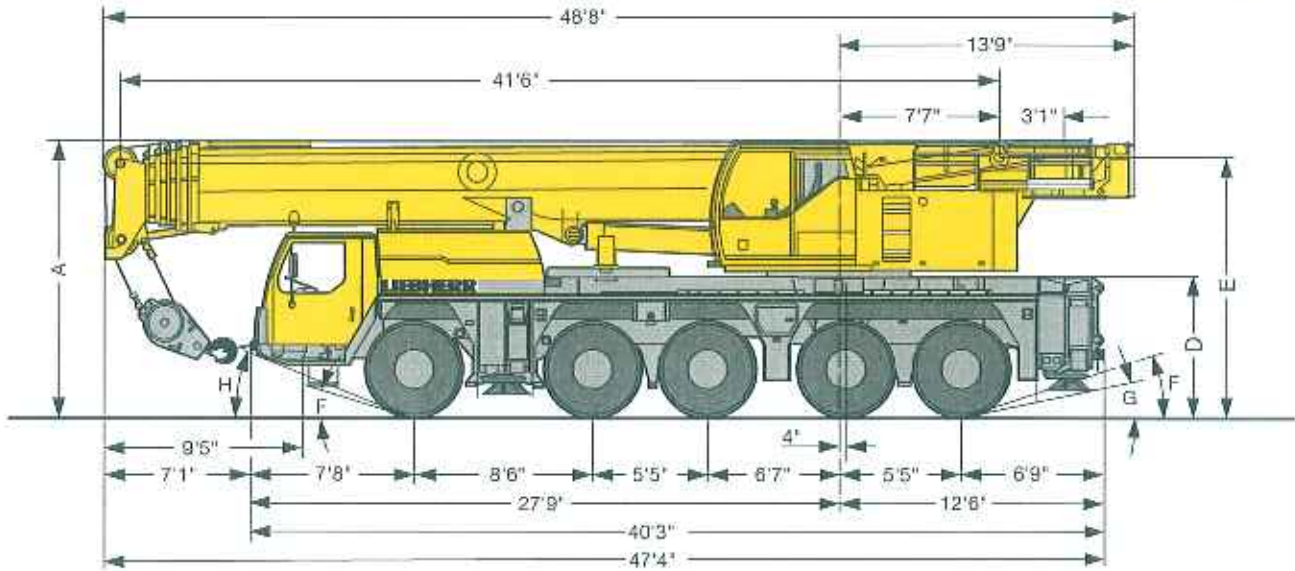
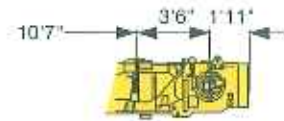
		42 - 104 ft			48 ft			62 ft			360°			14000 lbs			85%						
ft	ft	42 ft + 46 ft			156 ft + 46 ft			166 ft + 46 ft			170 ft + 46 ft			180 ft + 46 ft			184 ft + 46 ft			194 ft + 46 ft			ft
		62 ft			62 ft			62 ft			62 ft			62 ft			62 ft						
		0°	20°	40°	0°	20°	40°	0°	20°	40°	0°	20°	40°	0°	20°	40°	0°	20°	40°	0°	20°	40°	
17		6																				17	
20		6																				20	
23		6																				23	
26		6																				26	
29		6																				29	
32		5.9																				32	
35		5.9																				35	
38		5.8	6																			38	
44		5.6	5.9		6																	44	
50		5.4	5.7		6			5.1			5.3			4.4			4.6					50	
56		5.1	5.3	5.3	5.9			5.1			5.3			4.4			4.6			4		56	
62		4.8	4.9	5.1	5.9			5.1			5.3			4.4			4.6			4		62	
68		4.4	4.6	4.8	5.9	5.7		5.1			5.3			4.4			4.6			4		68	
74		4.1	4.3	4.5	5.8	5.7		5.1	5.1		5.2	5.3		4.4	4.4		4.6	4.6		4		74	
80		3.8	4	4.2	5.7	5.7		5.1	5.1		5.2	5.3		4.4	4.4		4.5	4.6		3.9	4	80	
86		3.6	3.7	3.9	5.6	5.5	5.1	5	5.1	4.6	5	5.2	4.9	4.3	4.4		4.6			4		86	
92		3.4	3.5	3.6	5.1	5.2	5.1	4.7	4.9	4.6	4	5.1	4.9		4.4		4.6			4		92	
98		3.1	3.2	3.4	4	5	4.9	3.7	4.7	4.6	3.1	4.9	4.8		4.4	4.4		4	4.6		3.7	98	
104		2.9	3.1	3.2	3.1	4.8	4.7		4.5	4.4		4.1	4.6		3.8	4.3		3	4.5		4	104	
110		2.7	2.9	3		4	4.5		3.7	4.3		3.2	4.4		2.9	4.2			3.7		3.4	110	
116		2.6	2.7	2.8		3.2	4.2		2.9	4			3.7			3.5			2.8			116	
122		2.4	2.5	2.6			3.6			3.4			2.9									122	
128		2.3	2.4	2.3			2.8															128	
134		2.2	2.2																			134	

TAB 1821302 / 1820322 / 1820342

# Lifting heights Hauteurs de levage



# Dimensions Encombremment



US2069.02

R. = All-wheel steering - Direction toutes roues

	Dimensions - Encombremment									
	A	A 4'*	B	C	D	E	F	G	H	
16.00 R 25	13'1"	12'10"	9'	7'7"	6'9"	12'4"	22°	14"	26°	
20.5 R 25	13'1"	12'10"	9'4"	7'7"	6'9"	12'4"	22°	14"	26°	

\* lowered - abaissé

## Weights Poids



Axle Essieu	1	2	3	4	5	Total weight lbs Poids total lbs
lbs	26400	26400	26400	26400	26400	132000*

\*with 19800 lbs counterweight / avec contrepoids 19800 lbs



Load (kips) Forces de levage kips	No. of sheaves Poulies	No. of lines Brins	Weight lbs Poids lbs
242.5	7	14	2730
198.8	5	11	1980
130	3	7	1540
57.5	1	3	990
19.4	-	1	550

## Working speeds Vitesses



		1	2	3	4	5	6	7	8	9	10	11	12	R 1	R 2	
16.00 R 25	mph	1.2 - 3.5	4.5	5.8	7.5	9.5	12.2	16.1	20.6	26.6	34.2	43.4	50	1.3 - 3.8	4.9	43 %
20.5 R 25		0.53 - 1.6	2	2.6	3.3	4.2	5.3	7	9	11.6	14.9	18.9	24.2	0.57 - 1.7	2.1	55 %



Drive Mécanismes	infinitely variable en continu	Rope diameter / Rope length Diamètre du câble / Longueur du câble	Max. single line pull Effort au brin maxi.
	0 - 360 ft/min single line ft/min au brin simple	7/8" / 820 ft	19400 lbs
	0 - 360 ft/min single line ft/min au brin simple	7/8" / 820 ft	19400 lbs
	0 - 1.5 rpm		
	approx. 65 seconds to reach 82° boom angle env. 65 s jusqu'à 82°		
	approx. 511 seconds for boom extension from 42 ft - 197 ft env. 511 s pour passer de 42 ft - 197 ft		

## Equipment Équipement

### Crane carrier

<b>Frame</b>	Self-manufactured, weight-optimized and torsion resistant box-type design of high-tensile structural steel.
<b>Outriggers</b>	4-point supporting system, hydraulically telescopic into horizontal and vertical direction. Automatic levelling of crane. Electronic inclination indicator.
<b>Engine</b>	6-cylinder Diesel, make Liebherr, type D846 A7, watercooled, output 370 kW (503 h.p.) at 1900 rpm, max. torque 1737 lbs-ft at 1200 rpm – 1500 rpm. Exhaust emissions acc. to 97/68/EG stage 3 and EPA/CARB Tier 3. Fuel reservoir: 127 gallons.
<b>Transmission</b>	ZF 12-speed gear box with automatic control system AS-TRONIC. ZF-Intarder fitted directly to the gear. Two-stage transfer case with lockable transfer differential.
<b>Axles</b>	Welded design, made of high-tensile fine grained steel. All axles steerable. Axles 2, 4 and 5 are planetary axles with differential locks.
<b>Suspension</b>	All axles are mounted on hydropneumatic suspension – "Niveaumatik suspension" and are lockable hydraulically.
<b>Tyres</b>	10 tyres, size: 16.00 R 25.
<b>Steering</b>	ZF-servoocom power steering, dual circuit system with hydraulic servo system and auxiliary pump system, driven by the axle. At road displacement, axles 3, 4 and 5 electrohydraulically speed-dependent and from 18.6 mph, axles 3 and 4 are fixed to straight displacement. From 37.2 mph, axle 5 is fixed straight. Steering according to EG directive 70/311 EWG.
<b>Brakes</b>	Service brake: all-wheel servo-air brake, all axles are equipped with disc brakes, dual circuit. Parking brake: Spring brake actuator, acting on the wheels of the 2 <sup>nd</sup> and 5 <sup>th</sup> axle. Sustained-action brakes: Engine brake as exhaust retarder with Liebherr additional brake system ZBS. Intarder on gear. Brakes acc. to EG directives 71/320 EWG.
<b>Driver's cab</b>	Spacious, steel made, corrosion resistant cab; cataphoretic dip-primed, on resilient suspension with hydraulic shock absorbers, sound and heat absorbing internal panelling acc. to EG directive, safety glazing, operating and control instruments, comfortably equipped.
<b>Electrical system</b>	Modern data bus technique, 24 Volt DC, 2 batteries of 170 Ah each, lighting acc. to traffic regulations.

### Crane superstructure

<b>Frame</b>	Self-manufactured, weight-optimized and torsion resistant welded design of high-tensile structural steel; linked by a triple-row roller slewing rim to the carrier for continuous rotation.
<b>Crane engine</b>	4-cylinder Diesel, make Liebherr, type D934S A6, watercooled, output 145 kW (197 h.p.) at 1800 rpm, max. torque 678 lbs-ft. at 1100 rpm – 1500 rpm. Exhaust emissions acc. to 97/68/EG stage 3 and EPA/CARB Tier 3. Fuel reservoir: 66 gallons.
<b>Crane drive</b>	Diesel-hydraulic, with 2 axial piston variable displacement pumps, with servo-control and capacity control, 1 double gear pump, open controlled oil circuits. Compact hydraulic drive flanged to the Diesel engine. Drive assembly completely enclosed for noise abatement.
<b>Control</b>	Electric „Load Sensing“ control, simultaneous operation of 4 working motions, 2 self-centering hand control levers (joy-stick type).
<b>Hoist gear</b>	Axial piston fixed displacement motor, Liebherr hoist drum with integrated planetary gear and spring-loaded static brake.
<b>Luffing gear</b>	1 differential ram with pilot-controlled brake valve.
<b>Slewing gear</b>	Axial piston fixed displacement motor, planetary gear, spring-loaded static brake. Slewing gear inversible from released to locked as standard feature.
<b>Crane cab</b>	All-steel construction, entirely galvanized, powder coated, with safety glazing, operating and control instruments, comfortably equipped, cab tiltable backwards.
<b>Safety devices</b>	LICCON safe load indicator, test system, hoist limit switch, safety valves to prevent pipe and hose ruptures.
<b>Telescopic boom</b>	Buckling and torsion resistant design of high-tensile structural steel, ovaliform boom profile, 1 base section and 5 telescopic sections. All telescopic sections hydraulically extendable independent of one another. Rapid-cycle telescoping system "Telematik". Boom length: 42 ft – 197 ft.
<b>Counterweight</b>	64600 lbs basic counterweight.
<b>Electrical system</b>	Modern data bus technique, 24 Volt DC, 2 batteries of 170 Ah each.

### Additional equipment

<b>Swing-away jib</b>	35 ft – 62 ft long, mountable to the telescopic boom at 0°, 20° or 40°. Hydraulic ram for operating the swing-away jib from 0° – 40° (option).
<b>Telescopic boom extension</b>	23 ft – 46 ft long lattice section, thus higher pinning point for swing-away jib.
<b>2<sup>nd</sup> hoist gear</b>	For two-hook operation or for operation with swing-away jib if the hoist rope shall remain reeved.
<b>Tyres</b>	10 tyres, size 20.5 R 25.
<b>Drive 10 x 8</b>	Additional drive of the 1 <sup>st</sup> axle.
<b>Additional counterweight</b>	28000 lbs for a total counterweight of 92600 lbs.

Other items of equipment available on request.

## Equipment Equipment

### Châssis porteur

<b>Cadre</b>	Construction en caisse résistante à la torsion et optimisée en poids réalisée par Liebherr en acier de construction à grain fin très rigide.
<b>Calage</b>	Dispositif de calage horizontal et vertical en 4 points, entièrement déployable hydrauliquement. Nivellement automatique du calage. Indicateurs électroniques d'inclinaison.
<b>Moteur</b>	Moteur diesel, 6 cylindres, fabriqué par Liebherr, de type D846 A7, à refroidissement par eau, de 370 kW (503 ch) à 1900 rpm, couple max. 1737 lbs-ft à 1200 rpm – 1500 rpm. Emissions des gaz d'échappement conformes aux directives 97/68/EG partie 3 et EPA/CARB Tier 3. Capacité du réservoir à carburant: 127 gallons.
<b>Boîte de vitesse</b>	Boîte de vitesses ZF à 12 rapports, mécanisme automatisé à commande AS-TRONIC. Ralentisseur hydrodynamique ZF directement accouplé à la boîte. Boîte de transfert à 2 étages avec blocage de différentiel.
<b>Essieux</b>	Construction soudée en acier haute résistance à grains fins pour l'ensemble des 5 essieux. Tous les essieux sont directeurs. Essieux 2, 4 et 5 planétaires avec blocage du différentiel.
<b>Suspension</b>	Suspension hydropneumatique «Niveaumatik» - sur tous les essieux. Chaque essieu peut être bloqué hydrauliquement.
<b>Pneumatiques</b>	10 pneus de taille: 16.00 R 25.
<b>Direction</b>	Direction hydraulique ZF Servocom, à 2 circuits, assistée hydrauliquement, avec pompe auxiliaire entraînée par essieu. Lors de déplacements sur route, les essieux 3, 4 et 5 sont dirigés électrohydrauliquement en fonction de la vitesse, et à partir de 18,6 mph, les essieux 3 et 4 sont fixés en marche rectiligne. À partir d'environ 37,2 mph, l'essieu 5 est fixé en marche rectiligne. Direction conforme aux directives européennes 70/311 CE.
<b>Freins</b>	Freins de service: servofrein à air comprimé, tous les essieux sont munis de freins à disque, à 2 circuits. Frein à main: ressort accumulé agissant sur les roues des essieux 2 à 5. Freins continus: frein moteur par clapet sur échappement avec système de ralentissement Liebherr ZBS. Ralentisseur hydrodynamique accouplé à la boîte de vitesses. Freins conformes aux directives européennes 71/320 CE.
<b>Cabine du conducteur</b>	Cabine spacieuse en tôle d'acier traitement anti-corrosion par bain de cathodèse, avec suspension élastique et amortisseurs hydrauliques, revêtement intérieur avec isolation phonique et thermique selon les directives européennes, glaces de sécurité, appareils de commande et de contrôle, équipement confortable.
<b>Installation électrique</b>	Technique moderne de transmission de données par BUS de données, courant continu 24 Volts, 2 batteries de 170 Ah chacune, éclairage conforme au code de la route.

### Partie tournante

<b>Cadre</b>	Construction soudée résistante à la torsion et optimisée en poids réalisée par Liebherr en acier de construction à grain fin très rigide. Couronne d'orientation à rouleaux à 3 rangées permettant une rotation illimitée sert de pièce de liaison avec le châssis de la grue.
--------------	--

<b>Moteur</b>	Moteur diesel Liebherr, 4 cylindres, de type D934S A6, à refroidissement par eau, de 145 kW (197 ch) à 1800 rpm, couple max. 678 lbs-ft à 1100 rpm – 1500 rpm. Emissions des gaz d'échappement conformes aux directives 97/68/EG partie 3 et EPA/CARB Tier 3. Capacité du réservoir à carburant: 66 gallons.
<b>Entraînement de la grue</b>	Diesel hydraulique avec 2 pompes à débit variable à pistons axiaux, servocommande et régulation de la puissance, 1 double pompe à engrenages, circuits hydrauliques ouverts et régulés. Entraînement hydraulique compact, accouplé directement au moteur Diesel, mécanisme d'entraînement total fermé pour une bonne insonorisation.
<b>Commande</b>	Direction électrique "Load Sensing", 4 mouvements de travail dirigeable simultanément, deux leviers de commande à 4 positions et à autocentrage.
<b>Mécanisme de levage</b>	Moteur à cylindrée constante et à pistons axiaux. Treuil de marque Liebherr équipé d'un engrenage planétaire et d'un frein d'arrêt commandé par ressort.
<b>Mécanisme de relevage</b>	1 vérin différentiel avec clapet de frein commandé.
<b>Dispositif de rotation</b>	Moteur à cylindrée constante à pistons axiaux, réducteur planétaire, frein d'arrêt commandé par ressort. Commutation en série du mécanisme d'orientation: ouvert et en orientation freinée automatiquement.
<b>Cabine du grutier</b>	Construction en tôle d'acier entièrement zinguée avec peinture par poudrage et cuisson au four, avec glaces de sécurité, appareils de commande et de contrôle, équipement confortable. Cabine inclinable vers l'arrière.
<b>Dispositif de sécurité</b>	Contrôleur de charge, «LICCDN», système test, limitation de la course pour le levage, soupape de sûreté contre la rupture de tubes et de tuyaux.
<b>Flèche télescopique</b>	Flèche télescopique en acier à haute résistance à grains fins, à profil ovale, 1 élément de base et 5 éléments télescopiques. Tous les éléments télescopiques indépendamment les uns des autres. Système de télescopage séquentiel rapide, «Telematik». Longueur de flèche: 42 ft – 197 ft.
<b>Contrepoids</b>	Plaque de base 54600 lbs.
<b>Installation électrique</b>	Technique moderne de transmission de données. Courant continu 24 Volts, 2 batteries de 170 Ah chacune.

### Équipement supplémentaire

<b>Fléchette pliante</b>	Longueur: 35 ft – 62 ft, montable sous un angle de 0°, 20° ou 40°. Vérin hydraulique pour le relevage de la fléchette pliante de 0° à 40° (en option).
<b>Rallonge flèche télescopique</b>	Élément en treillis de 23 ft – 46 ft, de cette manière point d'articulation plus haute pour la flèche pliante.
<b>2ème mécanisme de levage</b>	Pour l'utilisation du deuxième crochet, ou bien pour une utilisation avec fléchette pliante lorsque le câble de levage principal rest mouflé.
<b>Pneumatiques</b>	10 pneus. Taille: 20.5 R 25.
<b>Entraînement 10 x 8</b>	Essieu 1 est entraîné additionnellement.
<b>Contrepoids additionnel</b>	28000 lbs pour un contrepoids total de 92600 lbs.

Autres équipements supplémentaires sur demande.

## Remarks referring to load charts

1. The tabulated lifting capacities do not exceed 85% of the tipping load.
2. The crane's structural steelwork is in accordance with DIN 15018, part 3. Design and construction of the crane comply with DIN 15018, part 2, and with F. E. M. regulations.
3. The 85% overturning limit values take into account wind force 5 = wind speed 20 mph.
4. Lifting capacities are given in kips.
5. The weight of the hook blocks and hooks must be deducted from the lifting capacities.
6. Working radii are measured from the slewing centraline.
7. The lifting capacities given for the telescopic boom only apply if the folding jib is taken off.
8. Lifting capacities above 183000 lbs / 242500 lbs only with additional pulley block/special equipment.

## Remarques relatives aux tableaux des charges

1. Les forces de levage indiquées ne dépassent pas 85% de la charge de basculement.
2. La norme DIN 15018, 3ème partie est appliquée pour les charpentes. La construction de la grue est réalisée conformément à la norme DIN 15018, 2ème partie, et aux règles de la F. E. M.
3. A 85% de la charge de basculement, il a été tenu compte d'un vent de force 5 = vitesse de vent 20 mph.
4. Les forces de levage sont données en kips.
5. Les poids des moufles et crochets doit être soustrait des charges indiquées.
6. Les portées sont calculées à partir de l'axe de rotation.
7. Les forces indiquées pour la flèche télescopique s'entendent fléchette dépliée.
8. Forces de levage plus de 183000 lbs / 242500 lbs seulement avec moufle additionnel/équipement supplémentaire.