



**SK 575-32**

# HAMMERHEAD TOWER CRANE














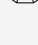

**Specifications:**

- ▶ Max jib length: 262.5 ft
- ▶ Capacity at max length: 8,598 lbs
- ▶ Max capacity: 70,548 lbs

**WORKS FOR YOU.™**

# KEY

## Zeichenerklärung · Légende · Leyenda · Legenda

	Hoisting · Heben · Levage · Elevación · Sollevamento
	Trolleying · Katzfahren · Distribution · Distribución · Traslazione carrello
	Slewing · Schwenken · Orientation · Orientació · Rotazione
	Travelling · Schienenfahren · Translation · Traslación · Traslazione
	Directive on noise level · Richtlinie für den Schall-Leistungspegel · Directive sur le niveau acoustique · Directiva sobre el nivel acustico · Direttiva sul livello acustico
	Consult us · Auf Anfrage · Nous consulter · Consultarnos · Consultateci
	Power requirements · Geforderte Stromstärke · Puissance totale nécessaire · Potencia necesaria · Potenza totale richiesta
	Power supply · Stromversorgung · Alimentation · Alimentación · Alimentazione
	In service · In Betrieb · En service · En servicio · In servizio
	Out of service · Außer Betrieb · Hors service · Fuera de servicio · Fuori servizio
	Max. under hook height · Höchste Hakenhöhe · Hauteur maxi. sous crochet · Maxima altura bajo gancho · Altezza max. sotto gancio
	Without load, without ballast, max. jib and max. height · Ohne Last und Ballast, mit Maximalausleger und Maximalhöhe · A vide, sans lest, avec flèche et hauteur maximum · Sin carga, sin lastre, con pluma y altura máxima · A vuoto, senza zavorra, braccio max., altezza max.
	Counterweight · Gegengewicht · Lest de contre-flèche · Lastre de contra flecha · Zavorra controbraccio
<b>C25</b>	FEM 1004 Out of service wind condition · FEM 1004 Windverhältnisse im Außerbetriebszustand · FEM 1004 Conditions de vent hors service · FEM 1004 Condiciones de viento fuera de servicio · FEM 1004 Condizioni del vento in fuori servizio

# CONTENTS

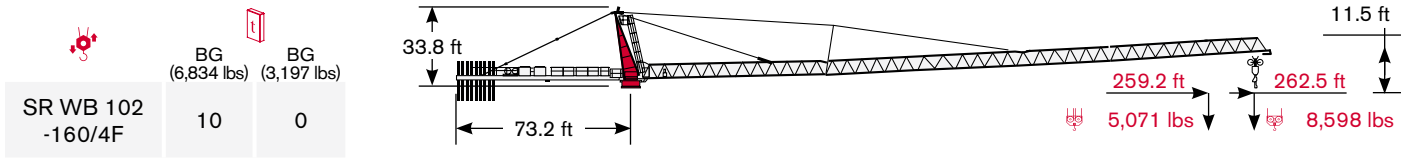
**SK 575-32****Inhalt · Contenu · Contenido · Indice**

Page · Seite · Page · Pàgina · Pagina:

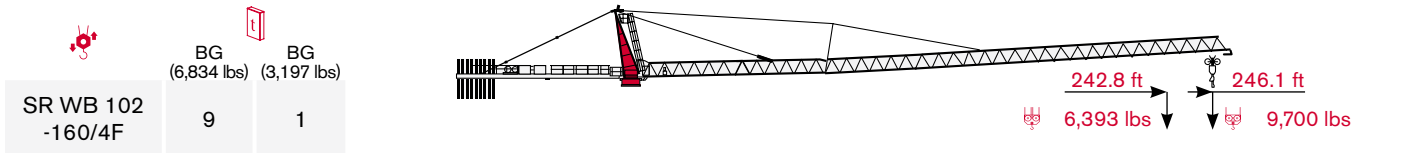
<b>Load Diagram · Lastkurven · Courbes de charges · Curvas de cargas · Diagramma di portata</b> .....	<b>4</b>
<b>Tower · Turm · Tour · Torre · Torre</b> .....	<b>6</b>
<b>Other configurations · Aufstellmöglichkeiten · Autres Implantations</b>	
<b>Otras Implantaciones · Altre Installazioni</b> .....	<b>7</b>
<b>Mechanisms · Antriebe · Mécanismes · Mecanismos · Meccanismi</b> .....	<b>8</b>
<b>Transportation · Transport · Transportation · Transportation · Trasporto</b> .....	<b>9</b>

# LOAD DIAGRAM

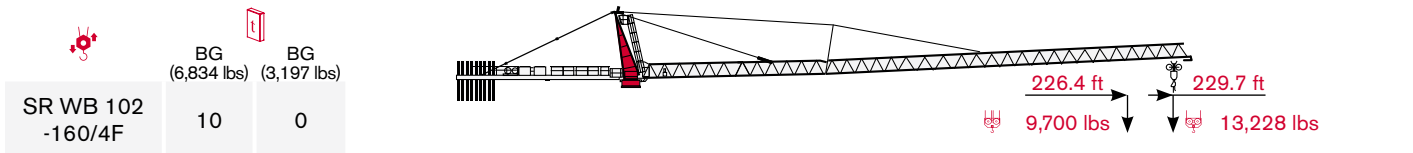
## Lastkurven · Courbes de charges · Curvas de cargas · Diagramma di portata



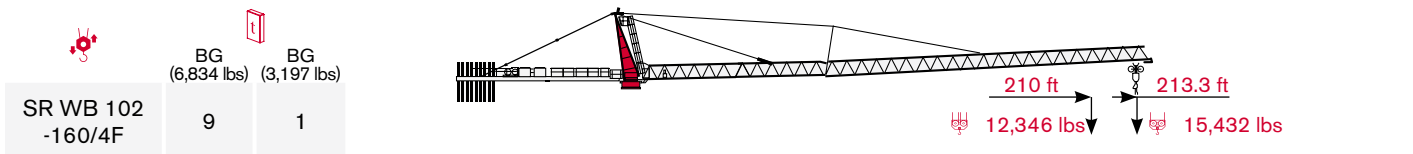
			65.6 ft	82 ft	98.4 ft	114.8 ft	131.2 ft	147.6 ft	164.1 ft	180.5 ft	196.9 ft	213.3 ft	229.7 ft	246.1 ft	259.2 ft	262.5 ft	
	35,274 lbs	→	86 ft	lbs	35,274	35,274	30,203	25,133	21,605	18,519	16,314	14,330	12,787	11,464	10,362	9,480	8,598
	70,548 lbs	→	45.6 ft	lbs	44,533	33,731	26,455	21,605	18,519	15,432	13,007	11,023	9,480	8,157	7,055	5,952	5,071



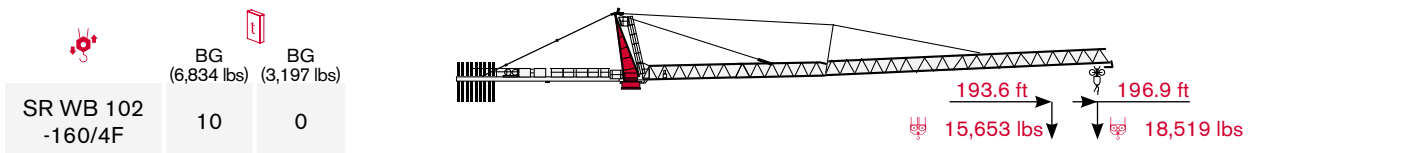
			65.6 ft	82 ft	98.4 ft	114.8 ft	131.2 ft	147.6 ft	164.1 ft	180.5 ft	196.9 ft	213.3 ft	229.7 ft	242.8 ft	246.1 ft	
	35,274 lbs	→	87.6 ft	lbs	35,274	35,274	30,865	25,794	22,046	18,960	16,755	14,771	13,228	11,905	10,803	9,700
	70,548 lbs	→	46.6 ft	lbs	46,297	35,054	27,778	22,487	19,401	16,094	13,669	11,685	10,141	8,598	7,496	6,393





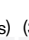
			65.6 ft	82 ft	98.4 ft	114.8 ft	131.2 ft	147.6 ft	164.1 ft	180.5 ft	196.9 ft	213.3 ft	226.4 ft	229.7 ft	
	35,274 lbs	→	102.4 ft	lbs	35,274	35,274	35,274	30,865	26,455	22,928	20,283	18,078	16,094	14,551	13,228
	70,548 lbs	→	52.8 ft	lbs	54,454	41,447	33,069	27,117	23,369	19,842	16,976	14,551	12,787	11,023	9,700

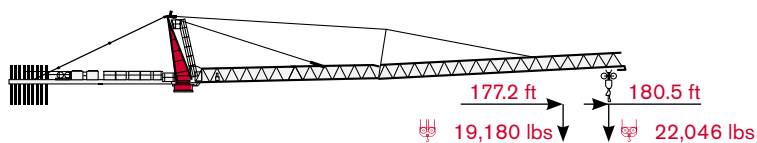


			65.6 ft	82 ft	98.4 ft	114.8 ft	131.2 ft	147.6 ft	164.1 ft	180.5 ft	196.9 ft	210 ft	213.3 ft	
	35,274 lbs	→	107 ft	lbs	35,274	35,274	35,274	32,408	27,778	24,251	21,385	18,960	16,976	15,432
	70,548 lbs	→	56.1 ft	lbs	58,643	44,754	35,715	29,321	25,574	21,605	18,519	16,094	14,110	12,346






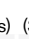
			65.6 ft	82 ft	98.4 ft	114.8 ft	131.2 ft	147.6 ft	164.1 ft	180.5 ft	193.6 ft	196.9 ft	
	35,274 lbs	→	113.9 ft	lbs	35,274	35,274	35,274	35,054	29,983	26,235	23,149	20,503	18,519
	70,548 lbs	→	60 ft	lbs	63,493	48,502	38,801	31,967	27,999	23,810	20,503	17,857	15,653

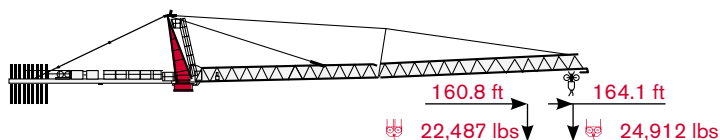
 SR WB 102 -160/4F	 BG (6,834 lbs)	 BG (3,197 lbs)
	9	0



65.6 ft 82 ft 98.4 ft 114.8 ft 131.2 ft 147.6 ft 164.1 ft 177.2 ft 180.5 ft



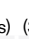
 <b>35,274 lbs</b> → 120.4 ft	<b>lbs</b> 35,274 35,274 35,274 35,274 31,967 27,999 24,692 22,046
 <b>70,548 lbs</b> → 63 ft	<b>lbs</b> 67,241 51,368 41,226 34,172 29,762 25,353 22,046 19,180

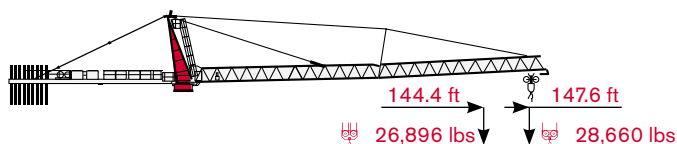
 SR WB 102 -160/4F	 BG (6,834 lbs)	 BG (3,197 lbs)
	8	1



65.6 ft 82 ft 98.4 ft 114.8 ft 131.2 ft 147.6 ft 160.8 ft 164.1 ft



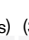
 <b>35,274 lbs</b> → 121.4 ft	<b>lbs</b> 35,274 35,274 35,274 35,274 32,187 28,219 24,912
 <b>70,548 lbs</b> → 64 ft	<b>lbs</b> 68,564 52,470 42,108 34,833 30,424 26,015 22,487

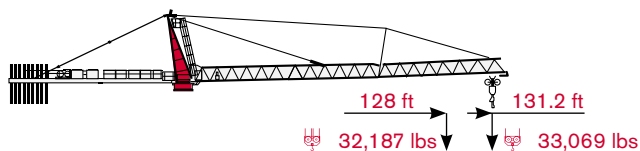
 SR WB 102 -160/4F	 BG (6,834 lbs)	 BG (3,197 lbs)
	8	0



65.6 ft 82 ft 98.4 ft 114.8 ft 131.2 ft 144.4 ft 147.6 ft

 <b>35,274 lbs</b> → 123.4 ft	<b>lbs</b> 35,274 35,274 35,274 35,274 32,849 28,660
 <b>70,548 lbs</b> → 65.6 ft	<b>lbs</b> 70,548 54,013 43,431 35,935 31,526 26,896

 SR WB 102 -160/4F	 BG (6,834 lbs)	 BG (3,197 lbs)
	7	1



65.6 ft 82 ft 98.4 ft 114.8 ft 128 ft 131.2 ft

 <b>35,274 lbs</b> → 124 ft	<b>lbs</b> 35,274 35,274 35,274 35,274 33,069
 <b>70,548 lbs</b> → 66.9 ft	<b>lbs</b> 70,548 55,336 44,533 36,817 32,187

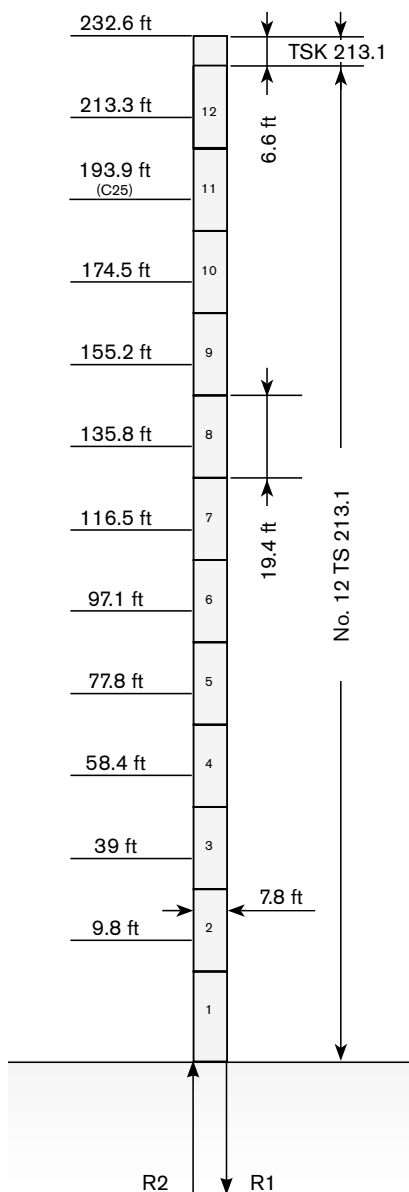
# TOWER

Turn · Tour · Torre · Torre

Standard Configurations · Standardkonfiguration · Standard Implantations · Implantaciones Standard · Installazioni Standard

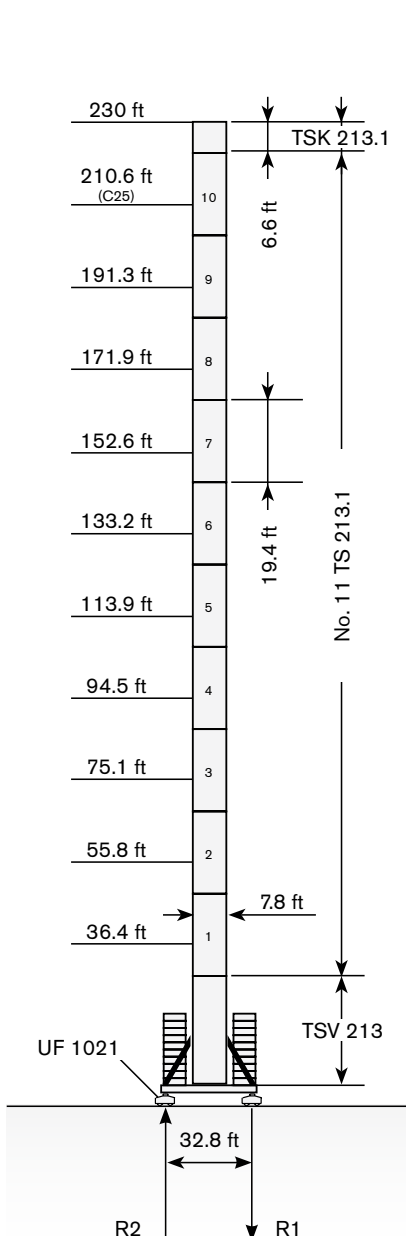
Basement: A

	●	◊
R1	-3400 kN	-3136 kN
R2	2538 kN	2431 kN
	1125 kN	



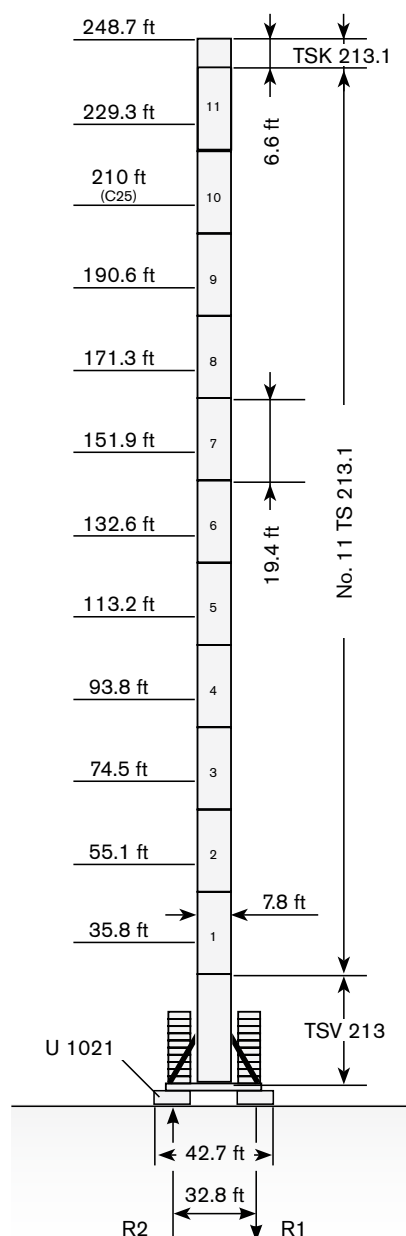
Basement: E

	●	◊
R1	-1107 kN	-1251 kN
R2	0 kN	0 kN
	1209 kN	



Basement: F

	●	◊
R1	-1110 kN	-1251 kN
R2	0 kN	0 kN
	1257 kN	



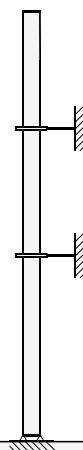
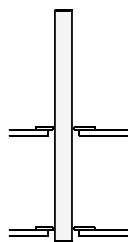
Max. under hook height · Höchste Hakenhöhe · Hauteur maxi. sous crochet · Maxima altura bajo gancho · Altezza max. sotto gancio



## Other configurations · Aufstellmöglichkeiten · Autres Implantations · Otras Implantaciones · Altre Installazioni

Bottom climbing crane · Kletterkran im Gebäude · Télescopage sur dalles · Telescopage grúa trepadora · Gru climbing

Crane tied to the structure · Geankerter Kran · Grue ancrée · Grúa anclada · Gru ancorata





Consult us · Auf Anfrage · Nous consulter · Consultarnos · Consultateci

# MECHANISMS





Antriebe · Mécanismes · Mecanismos · Meccanismi

Power supply · Stromversorgung ·

Alimentation · Suministro eléctrico · Alimentazione

	SR WB 102-160/4F	170 kVA	 480V - 60Hz / 3 ph
---	------------------	---------	--



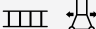
## Hoisting · Heben · Levage · Elevación · Sollevamento

			lbs	ft/min	kW	
	SR WB 102-160/4F		7,716	0 → 490	102	1,420.7 ft
			13,228	0 → 315		
			22,046	0 → 195		
			35,274	0 → 125		
			15,432	0 → 245		
			26,455	0 → 158		
			44,092	0 → 98		
			70,548	0 → 63		

## Hoisting Speed · Heben Geschwindigkeit · Vitesse de Levage · Velocidad de Elevación · Velocità' di Sollevamento



## Additional Specifications · Weitere Leistungsdaten · Spécifications additionnelles · Otras prestaciones · Altre movimentazioni

	FU 9-320/4	0 → 260 ft/min	1 x 12.2 HP
	K WB 120/4	0 → 0.9 rpm	2 x 11.4 HP (131.2 ft - 196.9 ft) 3 x 11.4 HP (213.3 ft - 262.5 ft)
	K FU 10-190/4	0 → 120 ft/min	4 x 12.2 HP

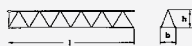
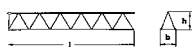
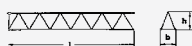
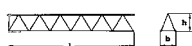
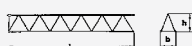
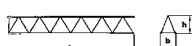
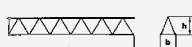
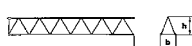
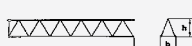



# TRANSPORTATION

## SK 575-32

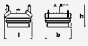


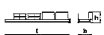
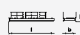
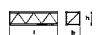

Transport · Transport · Conducción · Trasporto

### Packing list

SK 575-32	DESCRIPTION · BESCHREIBUNG · DESCRIPTION · DESCRIPCIÓN · DESCRIZIONE	LENGTH · LÄNGE · LONGUEUR · LONGITUD · LUNGHEZZA	WIDTH · BREITE · LARGEUR · ANCHURA · LARGHEZZA	HEIGHT · HÖHE · HAUTEUR · ALTURA · ALTEZZA	WEIGHT · GEWICHT · POIDS · PESO · PESO
	Jib Section I	39 ft	6.5 ft	7 ft	7,496 lbs
	Jib Section II	40.5 ft	6.5 ft	7.3 ft	8,863 lbs
	Jib Section III	38.8 ft	6.5 ft	7.5 ft	5,423 lbs
	Jib Section IV	18.7 ft	6.5 ft	6.9 ft	5,357 lbs
	Jib Section V	35 ft	6.5 ft	6.9 ft	5,203 lbs
	Jib Section VI	35.4 ft	6.5 ft	6.3 ft	4,277 lbs
	Jib Section VII	33.5 ft	6.5 ft	6.2 ft	2,756 lbs
	Jib Section VIII	33.4 ft	6.5 ft	6.2 ft	1,698 lbs
	Jib Tip	6.6 ft	4.5 ft	2.9 ft	661 lbs
	Tower Top cpl.	27.1 ft	6.4 ft	6.5 ft	9,590 lbs

# TRANSPORTATION

Transport · Transport · Conducción · Trasporto

SK 575-32	DESCRIPTION · BESCHREIBUNG · DESCRIPTION · DESCRIPCIÓN · DESCRIZIONE	LENGTH · LÄNGE · LONGUEUR · LONGITUD · LUNGHEZZA	WIDTH · BREITE · LARGEUR · ANCHURA · LARGHEZZA	HEIGHT · HÖHE · HAUTEUR · ALTURA · ALTEZZA	WEIGHT · GEWICHT · POIDS · PESO · PESO
	Turntable cpl.	11.7 ft	7.1 ft	7.4 ft	24,097 lbs
	Cab	5.4 ft	3.6 ft	7.2 ft	1,036 lbs
	Support, railing, electrical panel	11.6 ft	6.6 ft	6.4 ft	2,050 lbs
	Counterjib G 2	38.9 ft	7.4 ft	5.9 ft	7,496 lbs
	Counterjib G 1	31.1 ft	6.7 ft	5.6 ft	6,041 lbs
	Tower section TS 213.1	19.5 ft	7.8 ft	7.8 ft	9,789 lbs
	Tower section TSV 213	39.4 ft	10.3 ft	10.3 ft	31,085 lbs

# NOTES

SK 575-32

**Notizen · Note · Apunte · Appunti**

---

---

---

---

---

---

---

---

---

---

---

---

---

---

---

---

---

---

---

---

---

---

---

---

---

---

---

---

---

---



[www.terexcranes.com](http://www.terexcranes.com)

Effective Date: April 2010.

Product specifications and prices are subject to change without notice or obligation. The photographs and/or drawings in this document are for illustrative purposes only. Refer to the appropriate Operator's Manual for instructions on the proper use of this equipment. Failure to follow the appropriate Operator's Manual when using our equipment or to otherwise act irresponsibly may result in serious injury or death. The only warranty applicable to our equipment is the standard written warranty applicable to the particular product and sale and Terex makes no other warranty, express or implied. Products and services listed may be trademarks, service marks or trade-names of Terex Corporation and/or its subsidiaries in the USA and other countries. All rights are reserved. Terex® is a registered trademark of Terex Corporation in the USA and many other countries.

Gültig ab: April 2010.

Produktbeschreibungen und Preise können jederzeit und ohne Verpflichtung zur Ankündigung geändert werden. Die in diesem Dokument enthaltenen Fotos und/oder Zeichnungen dienen rein anschaulichen Zwecken. Anweisungen zur ordnungsgemäßen Verwendung dieser Ausrüstung entnehmen Sie bitte dem zugehörigen Betriebshandbuch. Nichtbefolgung des Betriebshandbuchs bei der Verwendung unserer Produkte oder anderweitig fahrlässiges Verhalten kann zu schwerwiegenden Verletzungen oder Tod führen. Für dieses Produkt wird ausschließlich die entsprechende, schriftlich niedergelegte Standardgarantie gewährt. Terex leistet keinerlei darüber hinaus gehende Garantie, weder ausdrücklich noch stillschweigend. Die Bezeichnungen der aufgeführten Produkte und Leistungen sind gegebenenfalls Marken, Servicemarken oder Handelsnamen der Terex Corporation und/oder ihrer Tochtergesellschaften in den USA und anderen Ländern. Alle Rechte vorbehalten. „TEREX“ ist eine eingetragene Marke der Terex Corporation in den USA und vielen anderen Ländern.

Date d'effet : Avril 2010.

Les spécifications et prix des produits sont sujets à modification sans avis ou obligation. Les photographies et/ou dessins contenus dans ce document sont uniquement pour illustration. Veuillez vous référer à la notice d'utilisation appropriée pour les instructions quant à l'utilisation correcte de cet équipement. Tout manquement au suivi de la notice d'utilisation appropriée lors de l'utilisation de notre équipement ou tout acte autrement irresponsable peut résulter en blessure corporelle sérieuse ou mortelle. La seule garantie applicable à notre équipement est la garantie standard écrite applicable à un produit et à une vente spécifique. Terex n'offre aucune autre garantie, expresse ou explicite. Les produits et services proposés peuvent être des marques de fabrique, des marques de service ou des appellations commerciales de Terex Corporation et/ou ses filiales aux Etats Unis et dans les autres pays, et tous les droits sont réservés. «TEREX» est une marque déposée de Terex Corporation aux Etats Unis et dans de nombreux autres pays.

Fecha efectiva: Abril 2010.

Los precios y las especificaciones de productos pueden sufrir cambios sin aviso previo u obligación. Las fotografías o dibujos de este documento tienen un fin meramente ilustrativo. Consulte el manual de instrucciones del operador correspondiente para más información sobre el uso correcto de este equipo. El hecho de no respetar el manual del operador correspondiente al utilizar el equipo o actuar de forma irresponsable puede suponer lesiones graves o fatales. La única garantía aplicable a nuestro equipo es la garantía escrita estándar correspondiente a cada producto y venta, y TEREX no amplía dicha garantía de forma expresa o implícita. Los productos y servicios mencionados pueden ser marcas registradas, marcas de servicio o nombres de marca de TEREX Corporation o de sus filiales en Estados Unidos de América y otros países, y se reservan todos los derechos. „TEREX“ es una marca comercial registrada de Terex Corporation en Estados Unidos de América y muchos otros países.

Data di inizio validità: Aprile 2010.

Ci riserviamo il diritto di modificare le specifiche e i prezzi dei prodotti in ogni momento e senza preavviso. Le fotografie e/o i disegni contenuti in questo documento sono destinati unicamente a scopi illustrativi. Consultare le istruzioni sull'uso corretto di questo macchinario, contenute nell'opportuno Manuale dell'operatore. L'inottemperanza delle istruzioni contenute nel Manuale dell'operatore del macchinario e altri comportamenti irresponsabili possono provocare gravi lesioni, anche mortali. L'unica garanzia applicabile ai nostri macchinari è la garanzia scritta standard applicabile al particolare prodotto e alla particolare vendita; Terex è esonerata dal fornire qualsiasi altra garanzia, esplicita o implicita. I prodotti e servizi elencati possono essere dei marchi di fabbrica, marchi di servizio o nomi commerciali di TEREX Corporation e/o società affiliate negli Stati Uniti d'America e altre nazioni e tutti i diritti sono riservati. „TEREX“ è un marchio registrato di Terex Corporation negli USA e molti altri Paesi.

Copyright 2010 Terex Corporation

Terex Cranes, Global Marketing, Dinglerstraße 24, 66482 Zweibrücken, Germany  
Tel. +49 (0) 6332 830, Email: [info.cranes@terex.com](mailto:info.cranes@terex.com), [www.terexcranes.com](http://www.terexcranes.com)

Brochure Reference: TC-DS-IMP-E/F/G/I/S-SK575-32-04/10