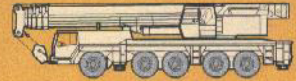


Product advantages

Mobile crane LTM 1160/2



- Max. lifting capacity: 160 t at 3 m radius**
- Max. height under hook: 96 m with swing-away jib**
- Max. radius: 74 m with swing-away jib**

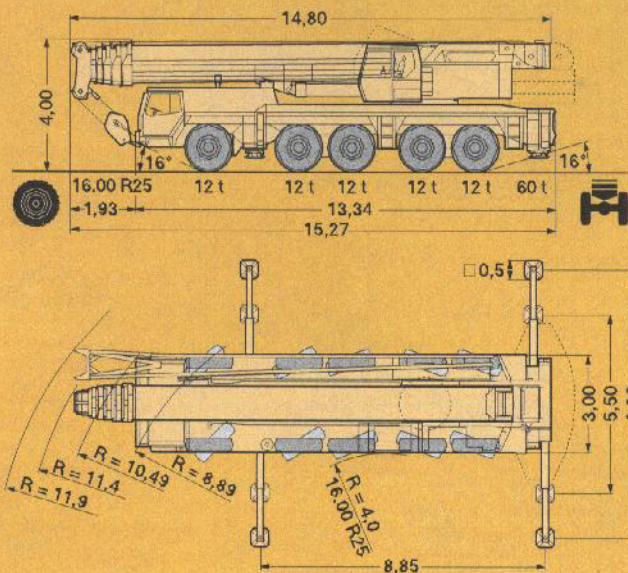


Performance profile of the LTM 1160/2 at a glance.

- Outstanding range of lifting capacities, counterweight variants 0 t, 11 t, 23 t, 35 t and 50 t
- Robust 400 kW/544 h.p. Liebherr turbo-charged Diesel engine, conform to EURO 2
- Compact and manoeuvrable due to 5-axle steering, smallest turning radius 10.3 m
- Electric/electronic crane control with integrated LICCON system
- 6-section telescopic boom of utmost stability and with a new oviform cross-section of outstanding torsional resistance, 13.2 m to 60 m long, rapid cycle telescoping system
- 3-section, 12.2 m to 36 m long swing-away jib, to be rigged at offset angles of 0°, 15°, 30° or 45°
- LICCON, the most modern crane computer system world-wide, for informative, monitoring and control functions
- Diesel engines, slewing rim, slewing gear, winches and hydraulic pumps are self-manufactured, quality checked components
- The LTM 1160/2 is manufactured by Liebherr within the scope of a quality assurance system according to DIN ISO 9001 certified by TÜV CERT

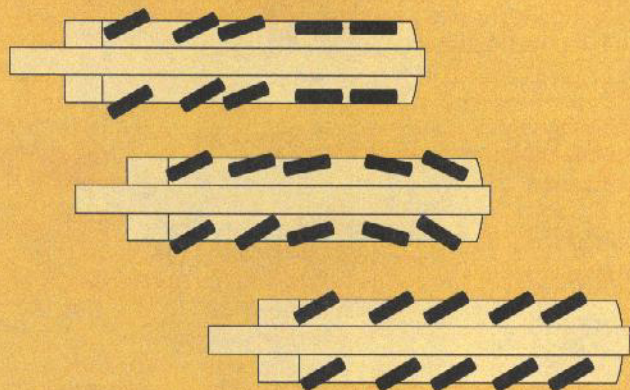
LIEBHERR

The better crane.



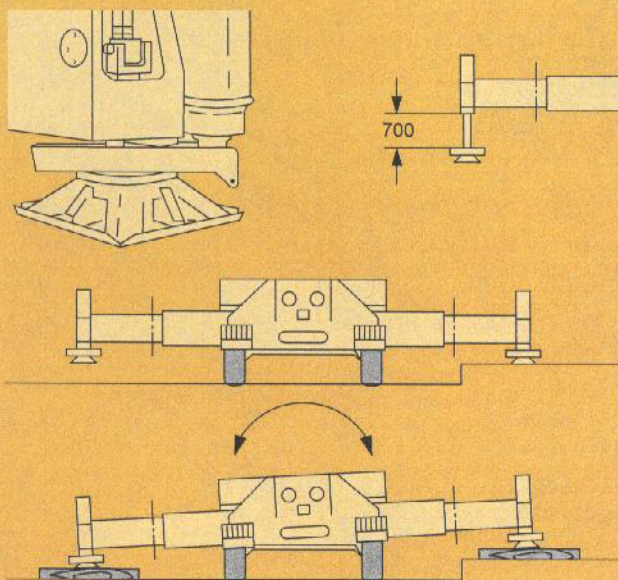
Compact, manoeuvrable and weight-optimized.

- Overall length 15,3 m only, length of carrier just 13,34 m
- Large overhang angles up to 23° at vehicle front and rear
- Small turning radius of 10.5 m at all-wheel steering
- 60 t total weight, incl. drive 10 x 8, 16.00 tyres, TELMA type eddy current brake, 30 t hook block (axle load 5 x 12 t)
- 2 optional tyre sizes
 - 14.00 R 25 - vehicle width 3 m
 - 16.00 R 25 - vehicle width 3 m



Variable drive and steering concept.

- Drive 10 x 6, axles 1, 4 and 5 driven, 4th and 5th axle driven at road travel, 1st axle activatable for rough-terrain operation
- Drive 10 x 8 (optional), axles 1, 2, 4 and 5 driven; axles 4 and 5 driven at road travel, 1st and 2nd axle activatable for rough-terrain operation
- Standard steering, 1st, 2nd and 3rd axle steerable
- All-wheel steering, 4th and 5th axle steerable independent of axles 1, 2 and 3 (crab steering), the additional hydraulic steering is locked for road travel



Setting crane on outriggers - quick, convenient and safe.

- Variable supporting basis
 - Supporting basis 5.5 m x 8.85 m
 - Supporting basis 8.3 m x 8.85 m
- Supporting pads remain fixed on the rams and are protected by splash guards
- Travel of supporting rams 700 mm
- 2 x 8° lateral inclination of carrier and crane superstructure
- Illuminated and dirt-protected reflecting levels
- Operation of outrigger system in accordance with the rules for the prevention of accidents
- Supporting force control by LICCON system (optional)
- Automatic control of sliding outriggers (optional)
- Inclinometer (optional)

The LTM 1160/2 - more efficient through advanced technology.

Torsional rigid telescopic boom.

- New oviform boom cross-section of particular inherent stability
- Maintenance-free polyamide slide pads of telescopes
- First-rate lifting capacities, e.g.
 - 51 t at 10 m radius
 - 19.7 t at 20 m radius
 - 10.8 t at 30 m radius
 - 6.7 t at 40 m radius
 - 4 t at 50 m radius
 - 2.4 t at 60 m radius
 - 1.2 t at 74 m radius
- Telescoping with approx. 50% of rated load practicable
- Telescoping by rapid cycle approx. 500 s of telescopic boom from 13.3 m to 60 m

Modern and powerful carrier drive.

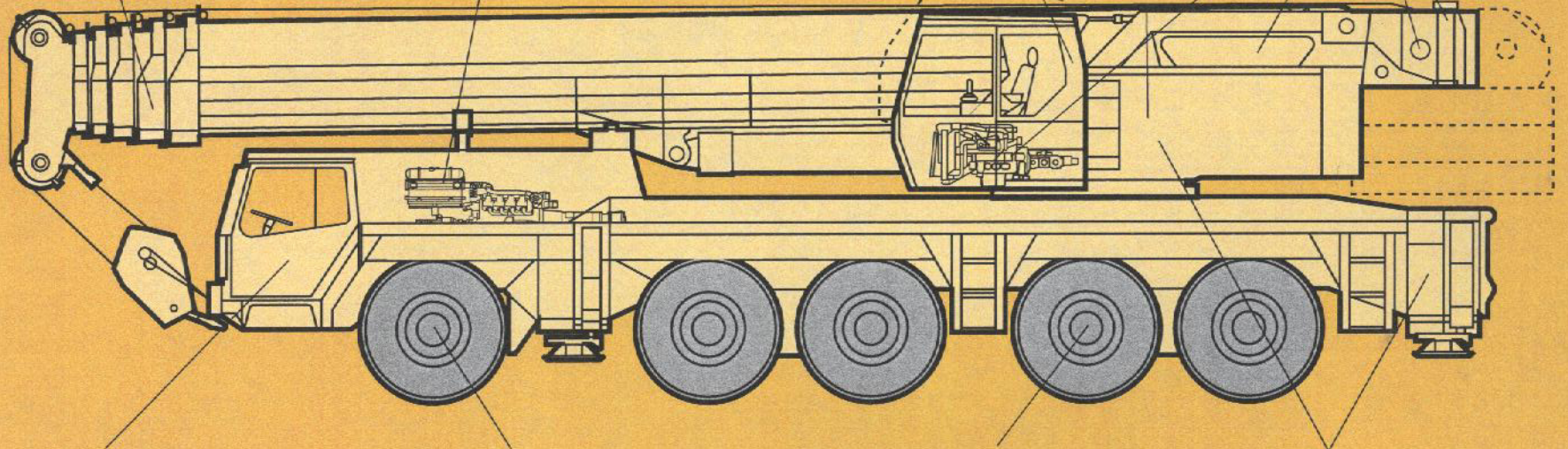
- Carrier engine: 8-cylinder Liebherr turbo-charged Diesel engine D 9408 TI of 400 kW/544 h.p., conform to EURO 2, robust and reliable
- Allison automatic transmission CLBT 755 with torque converter and hydrodynamic brake, electronic control, proved and well tested serial transmission, 5 forward and 1 reverse speed, rough-terrain ratio
- Max. driving speed 78 km/h, max. gradability 50%

Spacious crane cab with convenient armrest-integrated control levers.

- Galvanized crane cab with tinted panes all-round, front knockout window with large parallel wind-screen wiper, large skylight of bullet-proof glass with large parallel windscreen wiper, roller blinds on front window and skylight, space saving sliding door
- Cab tiltable backwards hydraulically by 20°
- Operator's seat with pneumatic lumbar support
- Convenient armrest-integrated controls, vertically and horizontally adjustable and inclinable master switch consoles and armrests
- Heat and sound insulated internal panelling
- LICCON computer with test system

Liebherr components - reliable and easy-to-service.

- Crane engine: 4-cylinder Liebherr turbo-charged Diesel engine D 914 TI of 125 kW/170 h.p., robust and reliable, located adjacent to crane cab, thus less noise pollution
- Slewing rim, slewing gear, winches and the axial piston variable displacement twin pumps are self-manufactured Liebherr components and are specifically matched for the application in mobile cranes
- Centralized lubricating system for slewing rim, boom bearing application and bearings of winches and luffing ram



Highly comfortable driving cab.

- Galvanized driving cab over width of vehicle, with internal sound absorbing and thermal panelling, comfortably equipped
- Air-cushioned driver's seat with pneumatic lumbar support
- Steering wheel adjustable in height and inclination
- Heatable exterior mirrors
- Electric window lifters
- Standardized and ergonomically located operating and control elements

Outstanding carrier technology for road and rough-terrain.

- Weight-optimized, almost maintenance-free, made of high-tensile steel, perfect track keeping and lateral stability due to special control linkage arrangement
- The maintenance-free steering knuckles are steel mounted
- The perfected and robust axles are manufactured in large series and are troublefree components
- The cardan shafts are maintenance-free; easy and quick fitting of the cardan shafts due to 70° diagonal toothing and 4 fixing screws

"Niveumatik" suspension - preserving crane and roads.

- Maintenance-free suspension rams, free of lateral forces, protected by synthetic tubes
- Level adjustment (suspension on „travelling mode“) can be activated automatically by push-button control from any position
- Stable cornering ability due to cross mounting of the hydropneumatic suspension
- Axle locking system (locking of the suspension for travelling with working equipment) controllable from driving cab

Weight-optimized steel structure.

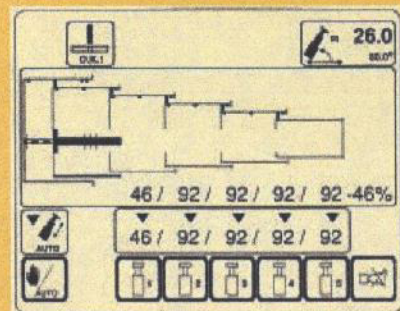
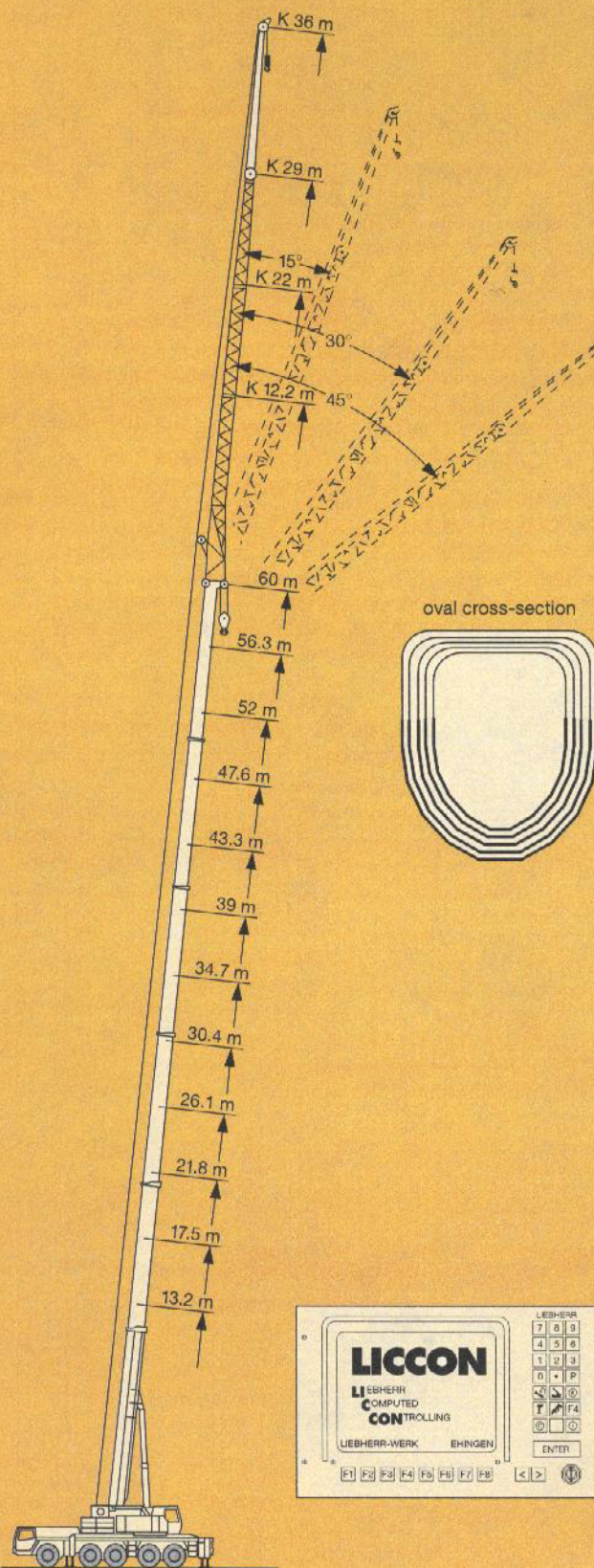
- Carrier, crane superstructure, telescopic boom and swing-away jib in light-gauge design, calculated by the FEM method, weight-optimized and of utmost torsional rigidity
- Tensile property of material with high safety factor through the application of STE 960 (960 N/mm²) for all supporting members
- Trim and covering panels of aluminium

Lifting loads - precise and safe.

- 6-section, 60 m long telescopic boom for 60 m height under hook and 54 m radius
- Optimal utilization of telescopic boom through 26 different telescoping options
- Swing-away jib, 12.2 m to 36 long, for 96 m lifting height and 72 m radius, to be rigged at offset angles of 0°, 15°, 30° or 45°, hydraulic rigging aid for swinging of the jib
- Easy and quick rereveing of hoist rope through modern self-locking rope dead end connection

LICCON assisted telescoping system.

- Telescoping by means of a single action pneumatic ram with a hydraulic operated driving pin
- Telescoping procedure controllable on the LICCON monitor assisted by a convenient operator's guide, precise approach of interlocking positions
- Telescopable loads are indicated by the operating display
- „Automatic mode“, i.e. fully automatic telescoping to any desired boom length, rapid cycle system
- Particularly light-weight telescoping system, thus increase of lifting capacities, specially with long booms and at large radii
- Automatic cushioning in end positions during telescoping and retracting for preserving structural members



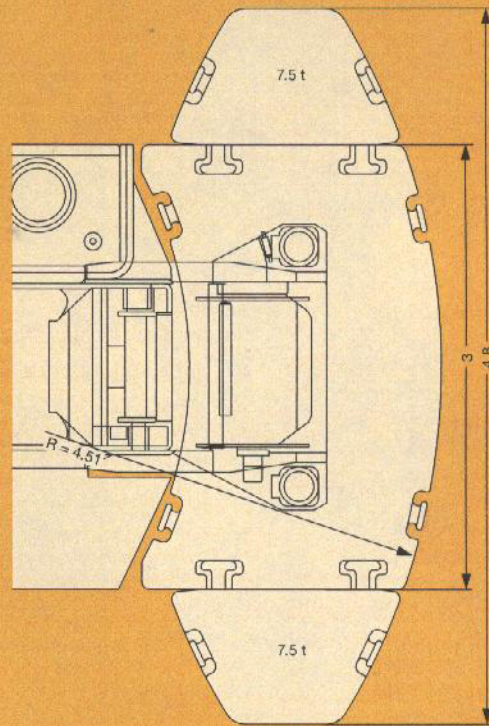
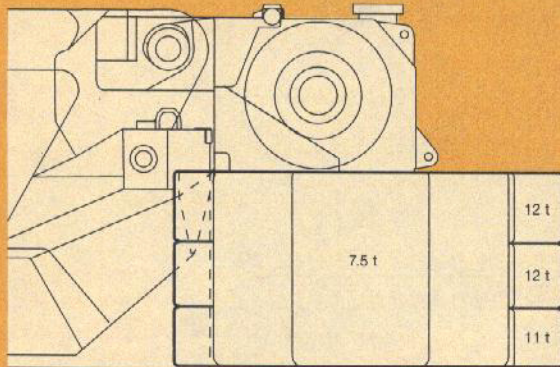
LICCON computer with SLI, test system and PLC control.

- Setting of crane configuration by convenient conversational mode functions
- Reliable acknowledgement of crane configuration set
- Representation of all essential data by graphic symbols within the operating display
- Integrated wind speed control (optional)
- Reliable cut-off device in the event of exceeding the permissible load moments
- Winch indications for load hook course with zero adjuster for ultra-precise lifting/lowering
- Test system for servicing, offering the facility to check all sensors and consumers within the system on the monitor
- Convenient programmable logical control (PLC) for lifting/lowering, slewing, luffing and telescoping



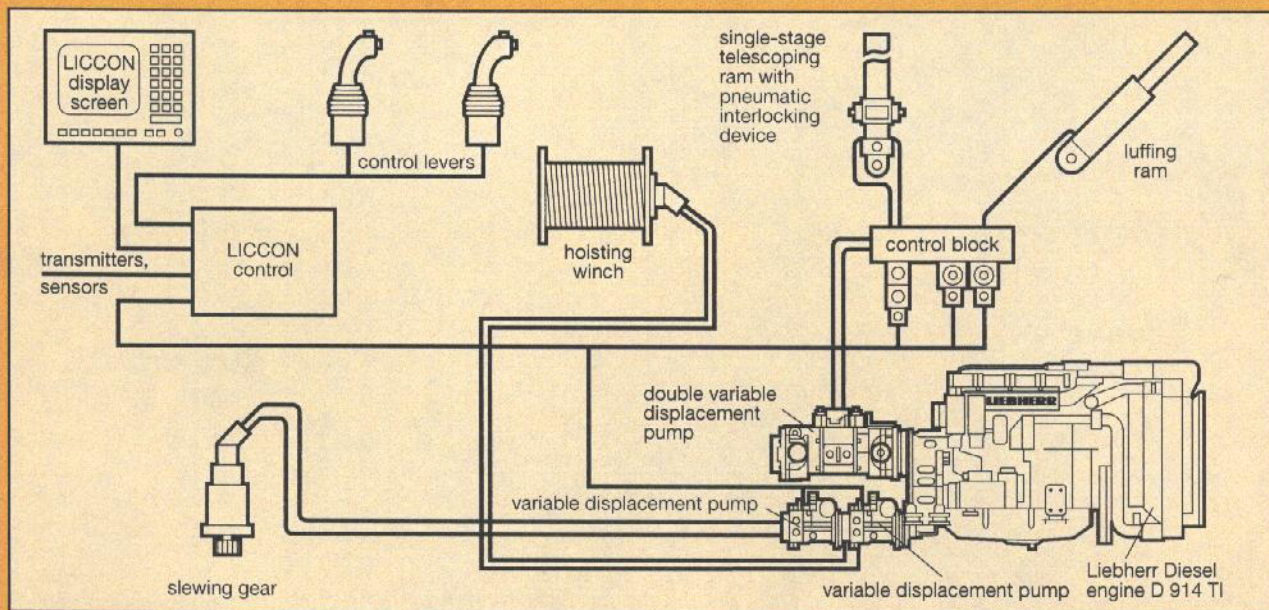
The counterweight system for more flexibility.

- Counterweight variants 0 t, 11 t, 23 t, 35 t and 50 t, thus a wider range of application facilities
- Control of balasting from the crane cab without the assistance of an auxiliary crane
- Compact counterweight dimensions, e.g. 35 t counterweight have a width of 3 m only
- Additional counterweight 2 x 7.5 t, attachable at the side, counterweight width 4.8 m



Electric/electronic crane control with integrated safe load indicator.

- Control of winches, slewing gear as well as luffing and telescoping motions via LICCON system (PLC control)
- Four working motions can be performed independent from one another
- Speeds of lifting/lowering, slewing and luffing preselectable in 5 steps
- Luffing speed controlled automatically depending on the boom length
- Extremely short reaction times at initiating the working speeds
- Hoisting and slewing gear controlled by oil circuit, thus optimal energy management (lower fuel consumption)



Subject to modifications.

TP 230d. 6.97

Please contact
LIEBHERR-WERK EHINGEN GMBH
 D-89582 Ehingen/Donau, Phone (0 73 91) 5 02-0, Telefax (0 73 91) 5 02-33 99
 www.lwe.liebherr.de, E-mail: info@lwe.liebherr.com

CD-

Lifting capacities at telescopic boom.



43 ft - 197 ft



360°



110 230 lbs



85%

ft	43 ft	57 ft	72 ft	86 ft	100 ft	114 ft	128 ft	142 ft	156 ft	171 ft	185 ft	197 ft	ft	
10	450	317											10	
11	327	303											11	
12	293	288	271										12	
13	275	274	254										13	
14	261	261	241	226	203								14	
15	249	248	230	215	195	169							15	
16	240	238	223	208	189	165							16	
17	232	228	216	201	182	161	133						17	
18	224	218	210	195	176	157	132						18	
20	209	200	197	183	164	149	129	111					20	
22	193	185	183	173	154	140	123	108					22	
24	178	171	170	164	144	132	118	104	88.5				24	
26	163	158	157	154	136	124	112	100	86				26	
28	151	147	146	144	128	117	107	96	83	71.5			28	
30	140	136	136	134	121	111	102	92	80	69.5	58.9		30	
32	127	126	127	125	115	105	97.5	88.5	77.5	67.5	57.6		32	
34			119	117	109	99.5	92.5	85	74.5	66	56.2	46.9	36.1	34
36			112	110	104	95	88	81.5	72	64	54.8	46.1	35.6	36
38			105	102	99.5	90	83.5	78	69.5	62	53.4	45.4	35	38
40			98.5	96	94.5	86	79.5	75	67	60	52	44.5	34.5	40
45			84.5	82	81	77	71	68	61.5	56.1	48.7	42.2	32.6	45
50				71.5	70.5	69.5	64.5	61.5	57	52.4	45.7	39.7	30.8	50
55				62.5	61.5	61.5	59.2	56.1	52.8	48.9	43	37.4	29	55
60					53.6	53.9	54.2	51.4	48.9	45.6	40.5	35.1	27.3	60
65					47	47.3	48.1	47.5	45.3	42.7	38.3	33.2	25.7	65
70					41.7	41.9	42.9	43.4	42	39.9	36.3	31.4	24.3	70
75						37.1	38.3	39.3	38.8	37.2	34.3	29.8	22.9	75
80						33	34.1	35.5	35.5	34.7	32.5	28.3	21.7	80
85						29.5	30.5	31.9	32.2	32.4	30.7	26.9	20.6	85
90							27.5	28.8	29.3	30.2	28.8	25.7	19.4	90
95							24.7	26.8	26.6	27.9	26.9	24.6	18.4	95
100							20.7	25.4	24	25.5	25.2	23.5	17.3	100
105								23.9	21.8	23.2	23.5	22.6	16.4	105
110								22.6	19.8	21.2	21.7	21.7	15.5	110
115								20	18	19.3	20	20.6	14.7	115
120									17.2	17.6	18.3	19.4	13.9	120
125									16.7	16.1	17	17.8	13.2	125
130									16.4	14.7	16.1	16.4	12.4	130
135										14.2	15.4	15	11.7	135
140										13.8	14.8	13.8	11	140
145											14.2	12.7	10.3	145
150											13.2	11.6	9.7	150
155											12.3	10.6	9.1	155
160												9.7	8.6	160
165													8.1	165
170													7.6	170
175													7.2	175
I	0	0	46	92	92	92	92/0	92/0	92/0	92/46	92	100	I	
II	0	46	46	46	92	92	92/92	92/46	92/92	92/92	92	100	II	
III	0	0	0	0	0	46	46/92	92/92	92/92	92/92	92	100	III	
IV	0	0	0	0	0	0	46/46	46/92	46/92	92/92	92	100	IV	
V	0	0	0	0	0	0	0/46	0/92	46/92	46/92	92	100	V	

1) over rear

TAB 103283 / 103284

Lifting capacities are given in kips (1,000 lbs).



43 ft - 197 ft



360°



77 160 lbs



85%

ft	43 ft	57 ft	72 ft	86 ft	100 ft	114 ft	128 ft	142 ft	156 ft	171 ft	185 ft	197 ft	ft
10	317												10
11	300												11
12	285	271											12
13	270	254											13
14	257	241	226	203									14
15	244	230	215	195	169								15
16	233	223	208	189	165								16
17	222	215	201	182	161	133							17
18	213	208	195	176	157	132							18
20	194	193	183	164	149	129	111						20
22	178	177	172	154	140	123	108						22
24	163	162	160	144	132	118	104	88.5					24
26	150	149	147	136	124	112	100	86					26
28	139	138	135	128	117	107	96	83	71.5				28
30	128	127	124	119	110	102	92	80	69.5	58.9			30
32	119	117	115	109	103	97.5	88.5	77.5	67.5	57.6			32
34		109	106	100	96	92	85	74.5	66	56.2	46.9	36.1	34
36		102	98	92.5	89	86	81.5	72	64	54.8	46.1	35.6	36
38		94.5	90.5	85	82.5	80.5	78	69.5	62	53.4	45.4	35	38
40		88	83	78.5	76	75	74.5	67	60	52	44.5	34.5	40
45		77.5	70	66	64	63.5	63.5	61.5	56.1	48.7	42.2	32.6	45
50			59.9	56.3	54.8	54.6	54.7	54.1	52.4	45.7	39.7	30.8	50
55			51.2	48.4	47.2	47.2	47.6	47.2	47.7	43	37.4	29	55
60				41.9	40.8	41	41.8	41.4	42.2	40.4	35.1	27.3	60
65				36.4	35.8	36	38.8	36.6	37.5	37.3	33.2	25.7	65
70				31.4	33.3	31.7	36.2	33.7	33.5	33.5	31.4	24.3	70
75					31.1	27.9	33.5	31.3	30	30.1	29.7	22.9	75
80					29.2	25.3	30.6	29	26.8	28.3	27.8	21.7	80
85					27.5	23.7	27.7	26.9	25.2	26.8	25.2	20.6	85
90						22.3	25.3	24.9	23.7	24.8	22.9	19.4	90
95						21.1	22.9	23.1	22.3	22.8	20.9	18.4	95
100						20	20.7	21.4	20.8	20.9	19	17.3	100
105							18.6	19.4	19.4	19.2	17.3	16.4	105
110							16.9	17.7	18.3	17.5	15.8	15.3	110
115							15.3	16.4	16.9	16	14.3	14	115
120								15.8	15.5	14.6	12.9	12.7	120
125								15.3	14.1	13.2	11.6	11.3	125
130								14.2	13	12.1	10.4	10.2	130
135									12	11	9.3	9.1	135
140									11	10	8.3	8.1	140
145										9.1	7.4	7.2	145
150										8.3	6.6	6.5	150
155										7.6	6	5.8	155
160											5.3	5.2	160
165												4.6	165
170												4	170
175												3.4	175
I	0	0/0	46	92	92/0	92/0	92/0	92/0/0	92/0	92/46	92	100	I
II	0	46/0	46	46	92/0	92/0	92/92	92/92/46	92/92	92/92	92	100	II
III	0	0/0	0	0	0/92	46/92	46/92	92/92/92	92/92	92/92	92	100	III
IV	0	0/0	0	0	0/46	0/92	46/46	46/92/92	46/92	92/92	92	100	IV
V	0	0/46	0	0	0/46	0/46	0/46	0/46/92	46/92	46/92	92	100	V

Lifting capacities at telescopic boom.



43 ft - 197 ft



360°

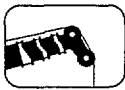


50 706 lbs



85%

ft	43 ft	57 ft	72 ft	86 ft	100 ft	114 ft	128 ft	142 ft	156 ft	171 ft	185 ft	197 ft	ft	
10	285												10	
11	269												11	
12	255	246											12	
13	241	231											13	
14	229	219	206	184									14	
15	218	209	195	178	153								15	
16	207	202	189	171	150								16	
17	197	194	183	166	146	121							17	
18	188	186	177	160	142	120							18	
20	169	169	166	149	135	117	101						20	
22	154	153	151	138	128	112	97.5						22	
24	140	139	136	126	118	107	94.5	80.5					24	
26	127	126	121	112	105	101	90.5	78					26	
28	116	115	109	101	95.5	92	86.5	75.5	65				28	
30	106	105	97.5	91	86.5	84	82	73	63	53.6			30	
32	97	96	89	83	79	77	75.5	70	61.5	52.3			32	
34		88	81.5	76	72.5	71	70	66.5	59.8	51.1	42.6	32.8	34	
36		80	75	70	67	66	65	62.5	58.1	49.8	41.9	32.3	36	
38		74	68.5	64.5	61.5	60.5	60	58.2	56.4	48.5	41.2	31.9	38	
40		69.5	63	59	56.7	55.9	55.5	54.2	54.2	47.3	40.5	31.3	40	
45		57.2	52.2	48.5	46.8	46.5	49.5	44.7	46.2	44.3	38.4	29.7	45	
50			47.2	40.4	41.7	39.2	44.3	41.5	39.7	39.2	36.1	28	50	
55			41.6	35.1	38.2	33.5	39.2	38.1	34.3	34.2	33.5	26.3	55	
60				32.5	35	30.8	34.2	34.3	31.4	32	30.3	24.8	60	
65				30.3	31.5	28.4	30.2	30.3	29.4	29.1	26.8	23.4	65	
70				28.4	27.8	26.4	26.8	27	27.1	26.1	23.8	22.1	70	
75					24.5	24.5	23.7	24.7	24.6	23.3	21.1	20.4	75	
80					21.7	22.6	20.8	22.9	22.1	20.9	18.8	18.4	80	
85					19.3	20.1	18.9	21	19.9	18.8	16.7	16.4	85	
90						18.7	17.5	19	18	16.9	14.9	14.6	90	
95						17.6	16.4	17.1	16.2	15.2	13.3	13	95	
100						16.3	15.2	15.4	14.4	13.7	11.8	11.5	100	
105							14.1	13.8	12.9	12.1	10.4	10.2	105	
110							12.8	12.5	11.5	10.7	9	8.8	110	
115							11.6	11.3	10.3	9.5	7.8	7.6	115	
120								10.2	9.2	8.4	6.8	6.6	120	
125								9.2	8.2	7.3	5.9	5.7	125	
130								8.3	7.3	6.5	5.1	4.9	130	
135									6.4	5.8	4.4	4.2	135	
140									5.7	5.1	3.7	3.5	140	
145										4.4	3.1		145	
150										3.7	2.4		150	
155										3.1			155	
 %	I	0	0/0	46/0	92/0	92/0	92/0/0	92/0/0	92/0/0	92/0	92/46	92	100	I
	II	0	46/0	46/0	46/0	92/0	92/0/0	92/92/0	92/92/46	92/92	92/92	92	100	II
	III	0	0/0	0/0	0/0	0/92	46/92/46	46/92/92	92/92/92	92/92	92/92	92	100	III
	IV	0	0/0	0/46	0/46	0/46	0/92/92	46/46/92	46/92/92	46/92	92/92	92	100	IV
	V	0	0/46	0/46	0/92	0/46	0/46/92	0/46/92	0/46/92	46/92	46/92	92	100	V



43 ft - 197 ft



360°



24 250 lbs



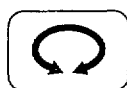
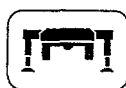
85%

ft	43 ft	57 ft	72 ft	86 ft	100 ft	114 ft	128 ft	142 ft	156 ft	171 ft	185 ft	197 ft	ft
10	281												10
11	265												11
12	250	246											12
13	237	231											13
14	224	219	206	184									14
15	211	208	195	178	153								15
16	200	198	189	171	150								16
17	189	188	178	161	143	120							17
18	179	178	165	149	134	117							18
20	160	158	139	126	116	110	100						20
22	143	136	120	110	102	97.5	92						22
24	127	118	105	96	90	86	83	78					24
26	113	104	92	84.5	79	76	74	70.5					26
28	99	93.5	82	75	70.5	68.5	70.5	64	62				28
30	85.5	88.5	72.5	66.5	63.5	61	66.5	58	57.4	53.2			30
32	75.5	80	67.5	59.5	60.5	55.3	61	55.8	52.6	50.4			32
34		72.5	64.5	53.9	57.8	50.9	56.3	53	48.5	47.3	42.2	32.8	34
36		65.5	61	49.9	55.3	48.7	52.1	49.9	45	43.9	40.8	32.3	36
38		58.7	57.7	47.8	52.7	46.5	48	46.7	43.4	42.4	39.4	31.9	38
40		52.7	54.1	45.8	50	44.5	44.3	43.7	41.7	41	37.7	31.3	40
45		42.2	43.4	41.6	41.8	40.2	37.1	38.6	36.6	34.8	31.9	29.7	45
50			35.7	37.3	35.6	35.2	33.8	33.9	31.6	29.9	27.2	26.2	50
55			30.7	32.7	30.3	30.4	30.5	29.5	27.3	25.8	23.3	22.6	55
60				27.8	25.9	27.6	26.9	25.7	23.7	22.3	20	19.4	60
65				24	22.1	24.7	23.7	22.5	20.7	19.4	17.2	16.7	65
70				21	20.5	21.8	21	19.9	18.1	17	14.8	14.4	70
75					18.5	19.1	18.5	17.6	15.9	14.8	12.8	12.4	75
80					16.3	16.8	16.3	15.6	13.9	12.9	10.9	10.6	80
85					14.3	14.8	14.2	13.8	12.2	11.2	9.3	9	85
90						13.1	12.5	12.1	10.7	9.7	7.8	7.6	90
95						11.6	11	10.6	9.2	8.3	6.5	6.3	95
100						10.2	9.6	9.3	7.9	7	5.4	5.2	100
105							8.4	8	6.7	5.9	4.4		105
110							7.4	7	5.8	5	3.5		110
115							6.4	6.1	5	4.2			115
120								5.3	4.2	3.4			120
125								4.5	3.5				125
130								3.8	2.8				130
I	0	0/0	46/0/0	92/0	92/0/0	92/0/0	92/0/0	92/0/0	92/0	92/46	92	100	I
II	0	46/0	46/0/0	46/0	92/0/0	92/0/0	92/92/0	92/92/46	92/92	92/92	92	100	II
III	0	0/0	0/0/0	0/0	0/92/0	46/92/46	46/92/92	92/92/92	92/92	92/92	92	100	III
IV	0	0/0	0/46/0	0/46	0/46/92	0/92/92	46/46/92	46/92/92	46/92	92/92	92	100	IV
% V	0	0/46	0/46/92	0/92	0/46/92	0/46/92	0/46/92	0/46/92	46/92	46/92	92	100	V

Lifting capacities at telescopic boom.



43 ft - 197 ft



360°



0 lbs



85%

ft	43 ft	57 ft	72 ft	86 ft	100 ft	114 ft	128 ft	142 ft	156 ft	171 ft	185 ft	197 ft	ft
10	276												10
11	260												11
12	245	244											12
13	229	228											13
14	216	213	188	162									14
15	203	197	165	144	129								15
16	190	175	148	130	118								16
17	177	158	134	119	108	99.5							17
18	162	144	123	108	98.5	91.5							18
20	134	117	101	89	84	76.5	81						20
22	114	103	87.5	75.5	79	69	71						22
24	96	92.5	81	67	73	65.5	62.5	60					24
26	81.5	79.5	74	63	65	62	55.6	54.5					26
28	70	70	66	60	58.5	56.3	52.2	50.8	47.5				28
30	60	61.5	58.4	56.7	52.3	50.7	49.5	46.8	43.1	40.2			30
32	51.9	55.1	52.5	52.8	47.3	47.2	45.5	42.9	39.5	36.8			32
34		49.5	49	48.8	43.2	44.4	42	39.5	36.3	33.9	30.4	29.2	34
36		44.7	44.9	44.9	39.6	41.2	38.8	36.6	33.6	31.3	28.1	27	36
38		39.8	40.9	41	36.1	38.1	35.7	33.6	30.9	28.8	25.7	24.7	38
40		35.4	37.2	37.5	32.9	35.2	32.8	31	28.4	26.4	23.5	22.6	40
45		27.6	29.9	31	26.8	29.3	27.3	25.8	23.5	21.8	19.2	18.5	45
50			24.2	25.9	22.1	24.8	23	21.7	19.6	18.2	15.7	15.2	50
55			19.6	21.6	18.3	21	19.4	18.3	16.4	15.1	12.8	12.3	55
60				18	15.2	17.9	16.5	15.5	13.7	12.5	10.3	9.9	60
65				15	12.6	15.4	14	13.1	11.4	10.3	8.3	7.9	65
70				12.6	10.4	13.3	12	11.1	9.5	8.5	6.5	6.3	70
75					8.4	11.3	10.2	9.4	7.9	6.9			75
80					6.7	9.6	8.5	7.9	6.4	5.5			80
85						5.2	8	7	6.5	5.1	4.2		85
90							6.8	5.9	5.4				90
95							5.6	4.9	4.4				95
100							4.6	4					100
I	0	0/0	46/0/0	92/0	92/0/0	92/0/0	0/0	0/0	0	46	92	100	I
II	0	46/0	46/0/0	46/0	92/0/0	92/0/0	92/0	92/46	92	92	92	100	II
III	0	0/0	0/0/0	0/0	0/92/0	46/92/46	92/92	92/92	92	92	92	100	III
IV	0	0/0	0/46/0	0/46	0/46/92	0/92/92	46/92	92/92	92	92	92	100	IV
V	0	0/46	0/46/92	0/92	0/46/92	0/46/92	46/92	46/92	92	92	92	100	V

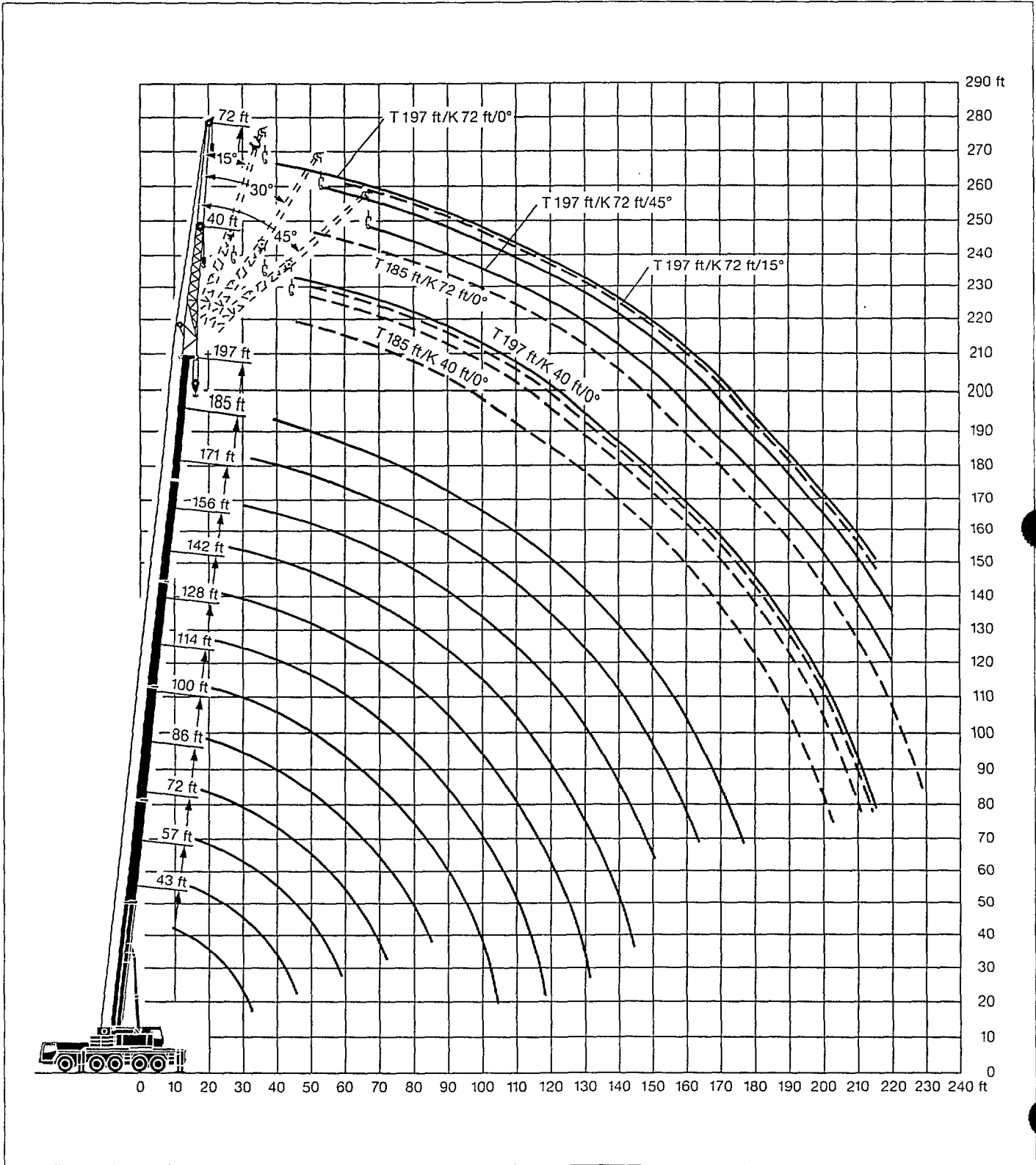
TAB 103269

Remarks referring to load charts.

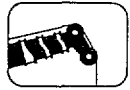
1. The tabulated lifting capacities do not exceed 85 % of the tipping load.
2. The crane's structural steelwork is in accordance with DIN 15018, part 3. Design and construction of the crane comply with DIN 15018, part 2, and with F. E. M. regulations.
3. The 85 % overturning limit values take into account wind force 5 = wind speed 20 mph.
4. Lifting capacities are given in kips.
5. The weight of the hook blocks and hooks must be deducted from the lifting capacities.
6. Working radii are measured from the slewing centreline.
7. The lifting capacities given for the telescopic boom only apply if the folding jib is taken off.
8. Lifting capacities are subject to modifications.
9. Lifting capacities above 317 kips only with special equipment.

Lifting heights.

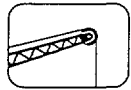
Telescopic boom.



Lifting capacities at the folding jib.



142 ft - 197 ft



0°/15°/30°/45°
40 ft



360°



110 230 lbs



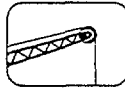
85%

ft	142 ft				156 ft				171 ft				185 ft				197 ft				ft	
	40 ft				40 ft				40 ft				40 ft				40 ft					
	0°	15°	30°	45°	0°	15°	30°	45°	0°	15°	30°	45°	0°	15°	30°	45°	0°	15°	30°	45°		
28	42.4				38.1																28	
30	42.4				38				32.5													30
32	42.4				37.7				32.5													32
34	42.2	33.6			37.5				32.4				25.4									34
36	41.9	32.9			37.3				32.3				25.2									36
38	41.5	32.3			37.1				32.1				25.1									38
40	41.1	31.6			36.9	30.2			31.9	26.7			24.9				18.9					40
45	40.2	29.9			36.1	29.1			31.1	26.7			24.4				18.5					45
50	39.1	28.4	21.2		35.3	27.8	20.7		30	26.2	20.4		23.7	22.6			18	16.7				50
55	37.5	27	20.5	16.7	34.3	26.5	20.1	16.6	28.8	25.5	19.9	16.2	22.9	21.9	19.3		17.4	16.3	15.4			55
60	35.4	25.7	19.8	16.3	33.1	25.4	19.6	16.2	27.5	24.6	19.4	16	22	21	18.8	15.5	16.8	15.8	14.7	13.3		60
65	33.4	24.6	19.2	16	31.3	24.3	19	15.9	26.2	23.8	18.8	15.8	21	20	18.3	15.3	16	15	14	12.9		65
70	31.7	23.6	18.7	15.7	29.6	23.4	18.6	15.7	25	23	18.4	15.6	20.1	19.1	17.9	15.1	15.2	14.2	13.4	12.5		70
75	30	22.7	18.2	15.5	28	22.6	18.1	15.5	23.8	22	17.9	15.4	19.2	18.2	17.4	14.9	14.4	13.5	12.8	12.1		75
80	28.5	21.8	17.7	15.3	26.5	21.8	17.7	15.3	22.6	21	17.5	15.2	18.3	17.4	16.7	14.8	13.6	12.8	12.2	11.6		80
85	27	21.1	17.3	15.1	25.1	21.1	17.3	15.1	21.5	20	17.2	15	17.5	16.6	16	14.6	12.9	12.1	11.6	11.2		85
90	25.6	20.4	16.9	14.9	23.9	20.4	16.9	14.9	20.4	19.1	16.8	14.9	16.6	15.8	15.3	14.4	12.2	11.5	11	10.7		90
95	24.4	19.7	16.5	14.8	22.7	19.8	16.6	14.7	19.4	18.3	16.5	14.7	15.9	15.1	14.7	14.1	11.5	10.9	10.4	10.2		95
100	23.2	19.1	16.2	14.6	21.6	19.2	16.3	14.6	18.5	17.5	16.2	14.6	15.1	14.4	14	13.8	10.9	10.3	9.9	9.7		100
105	22.1	18.5	15.9	14.5	20.6	18.7	16	14.5	17.6	16.8	15.8	14.4	14.5	13.8	13.4	13.3	10.4	9.8	9.5	9.3		105
110	20.5	18	15.6	14.4	19.6	18.2	15.7	14.4	16.8	16.1	15.5	14.3	13.8	13.2	12.9	12.8	9.8	9.4	9	8.9		110
115	18.8	17.6	15.4	14.4	18.6	17.8	15.5	14.3	16	15.5	15	14.1	13.2	12.7	12.4	12.3	9.3	8.9	8.6	8.5		115
120	17.1	17	15.2	14.3	17.5	17.3	15.3	14.3	15.3	14.8	14.4	14	12.6	12.1	11.9	11.8	8.9	8.5	8.3	8.1		120
125	15.5	16.4	15	14.3	16.1	16.8	15.1	14.3	14.6	14.3	13.9	13.8	12.1	11.6	11.4	11.4	8.5	8.1	7.9	7.8		125
130	14.1	14.9	14.8	14.3	14.7	15.5	15	14.3	14	13.7	13.5	13.4	11.6	11.2	11	11	8.1	7.8	7.6	7.5		130
135	12.8	13.5	14	13.9	13.4	14.2	14.4	14.2	13.3	13.1	13	13	11.1	10.7	10.6	10.6	7.7	7.5	7.3	7.3		135
140	11.5	12.2	12.8	13	12.1	12.9	13.5	13.6	12.3	12.5	12.5	12.6	10.7	10.3	10.2	10.3	7.3	7.2	7.1	7		140
145	10.4	11	11.5	11.7	11	11.7	12.2	12.5	11.1	11.9	12	12.1	10.3	10	9.9	9.9	6.9	6.9	6.8	6.8		145
150	9.3	9.9	10.3	10.4	9.9	10.6	11	11.3	10	10.7	11.2	11.5	9.9	9.6	9.5	9.6	6.5	6.6	6.6	6.6		150
155	8.3	8.8	9.1	9.2	8.9	9.5	9.9	10.1	9.3	9.7	10.2	10.5	9.3	9.3	9.2	9.3	6.1	6.3	6.4	6.4		155
160	7.6	7.9	8.1		8.2	8.5	8.8	9	9	8.7	9.1	9.4	8.5	8.8	8.9	9	5.7	6	6.1	6.2		160
165	7.2				7.9	7.9	7.9	8	8.6	8.3	8.3	8.5	7.7	8.2	8.6	8.7	5.3	5.7	5.8	6		165
170	6.9				7.6	7.5	7.6	7.6	8.3	8.1	8.1	8.3	7.1	7.5	7.8	7.9	4.9	5.4	5.5	5.6		170
175					7.2	7.2	7.2		7.8	7.8	7.8	8	6.5	6.9	7.1	7.3	4.6	5	5.2	5.4		175
180									7.3	7.5	7.5	7.6	6	6.3	6.5	6.7	4.2	4.7	4.9	5		180
185									6.8	7	7.2		5.5	5.8	6	6.1	3.9	4.4	4.6	4.7		185
190									6.4	6.5	6.6		5	5.3	5.4	5.5	3.7	4.1	4.3	4.4		190
195													4.5	4.8	4.9	5	3.4	3.8	4	4		195
200													4.1	4.4	4.5	4.4	3.2	3.5	3.7	3.7		200
205																	3	3.3	3.4	3.5		205
210																	2.8	3	3.3			210
215																	2.7	2.8	2.9			215
I		92				92				92/46				92			100				I	
II		92				92				92/92				92			100				II	
III		92				92				92/92				92			100				III	
IV		46				46				92/92				92			100				IV	
V		0				46				46/92				92			100				V	

TAB 103326 / 103328 / 103330 / 103332



142 ft - 197 ft



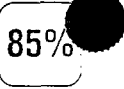
0°/15°/30°/45°
72 ft*



360°



110 230 lbs



85%

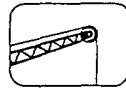
ft	142 ft				156 ft				171 ft				185 ft				197 ft				ft
	0°	15°	30°	45°	0°	15°	30°	45°	0°	15°	30°	45°	0°	15°	30°	45°	0°	15°	30°	45°	
30	18.2																				30
32	18.2																				32
34	18.2				17																34
36	18.2				17																36
38	18.2				17																38
40	18.2				17				15.7				13.8				11.4				40
45	18				16.8				15.6				13.8				11.2				45
50	17.6	14.6			16.6				15.3				13.7				10.9				50
55	17.3	14.4			16.3	13.9			15.1	13.2			13.6				10.6				55
60	16.9	14.1			16	13.5			14.9	12.9			13.5	12			10.3	9.6			60
65	16.3	13.6			15.6	13.1			14.6	12.5			13.3	11.7			10	9.3			65
70	15.8	13.2	11		15.1	12.8	10.7		14.3	12.2			13.1	11.4			9.7	8.9			70
75	15.3	12.8	10.7		14.7	12.4	10.4		13.9	11.9	10.1		12.9	11.2	9.6		9.4	8.6	7.5		75
80	14.8	12.4	10.4	8.7	14.3	12	10.2	8.7	13.6	11.6	9.9	8.7	12.6	10.9	9.4		9.1	8.2	7.3		80
85	14.3	12	10.2	8.7	13.9	11.7	10	8.7	13.2	11.3	9.7	8.5	12.2	10.7	9.3		8.7	7.9	7		85
90	13.8	11.6	9.9	8.6	13.4	11.4	9.8	8.6	12.9	11	9.5	8.5	11.8	10.5	9.1	8.2	8.4	7.6	6.8	6.3	90
95	13.4	11.3	9.7	8.5	13.1	11.1	9.6	8.5	12.6	10.8	9.4	8.4	11.3	10.3	9	8.2	8	7.3	6.6	6.2	95
100	13	11	9.5	8.5	12.7	10.8	9.4	8.4	12.2	10.5	9.2	8.3	10.9	10	8.9	8.1	7.6	7	6.3	6	100
105	12.5	10.7	9.3	8.3	12.3	10.5	9.2	8.3	11.9	10.3	9	8.2	10.5	9.7	8.8	8	7.2	6.8	6.1	5.8	105
110	12.2	10.4	9.2	8.3	12	10.3	9	8.2	11.6	10.1	8.9	8.1	10	9.4	8.6	8	6.9	6.5	5.9	5.7	110
115	11.8	10.2	9	8.2	11.6	10.1	8.9	8.2	11.3	9.9	8.7	8.1	9.6	9	8.5	7.9	6.5	6.3	5.7	5.5	115
120	11.5	9.9	8.8	8.2	11.3	9.8	8.8	8.1	11	9.7	8.6	8	9.2	8.6	8.4	7.8	6.2	6	5.6	5.3	120
125	11.1	9.7	8.7	8.1	11.1	9.6	8.6	8	10.8	9.5	8.5	8	8.8	8.3	8.1	7.7	6	5.8	5.4	5.2	125
130	10.8	9.5	8.6	8.1	10.8	9.4	8.5	8	10.4	9.3	8.4	7.9	8.5	7.9	7.8	7.6	5.7	5.5	5.2	5.1	130
135	10.6	9.3	8.5	8	10.5	9.3	8.4	7.9	10	9.1	8.3	7.9	8.1	7.6	7.5	7.4	5.4	5.3	5.1	5	135
140	10.3	9.1	8.4	8	10.3	9.1	8.3	7.9	9.6	8.9	8.2	7.8	7.8	7.4	7.3	7.3	5.2	5.1	4.9	4.8	140
145	10.1	9	8.3	8	10.1	8.9	8.2	7.8	9.2	8.7	8.1	7.8	7.5	7.1	7	7.1	5	4.9	4.8	4.7	145
150	9.8	8.8	8.2	8	9.8	8.8	8.2	7.8	8.8	8.4	8	7.8	7.2	6.9	6.8	6.9	4.8	4.7	4.6	4.6	150
155	9.5	8.7	8.1	8	9.6	8.7	8.1	7.8	8.5	8.1	7.9	7.7	6.9	6.6	6.6	6.7	4.6	4.5	4.5	4.5	155
160	8.8	8.6	8.1	8	9.1	8.6	8	7.8	8.1	7.9	7.7	7.6	6.7	6.4	6.4	6.5	4.4	4.3	4.3	4.3	160
165	7.9	8.4	8	8	8.2	8.5	8	7.8	7.8	7.6	7.5	7.5	6.4	6.2	6.2	6.3	4.3	4.1	4.1	4.2	165
170	7.3	8	8	8	7.5	8.3	8	7.8	7.5	7.4	7.3	7.4	6.2	6	6	6.1	4.1	4	4	4.1	170
175	6.7	7.3	7.7	7.8	7	7.7	7.9	7.8	6.9	7.2	7.1	7.2	6	5.9	5.9	6	4	3.8	3.8	3.9	175
180	6.2	6.7	7.1	7.3	6.4	7	7.5	7.6	6.4	6.9	7	7.1	5.8	5.7	5.7	5.8	3.8	3.7	3.7	3.8	180
185	5.7	6.2	6.5		5.9	6.5	6.9	7.1	5.9	6.5	6.8	7	5.6	5.6	5.5	5.6	3.6	3.6	3.6	3.6	185
190	5.2	5.6	5.9		5.4	5.9	6.3	6.4	5.4	6	6.4	6.7	5.4	5.4	5.4	5.6	3.4	3.4	3.4	3.5	190
195	4.8	5.1			5	5.4	5.7	5.8	5.1	5.5	5.9	6.1	5	5.3	5.3	5.4	3.2	3.3	3.3	3.4	195
200					4.6	4.9	5.2		5	5	5.4	5.5	4.6	5.1	5.2	5.4	2.9	3.2	3.2	3.3	200
205					4.5	4.6			4.8	4.9	4.9	5.1	4.2	4.8	5	5.2	2.7	3	3.1	3.2	205
210									4.7	4.7	4.8		3.9	4.3	4.7	4.8	2.4	2.8	3	3.1	210
215									4.6	4.6	4.7		3.5	3.9	4.2	4.3	2.2	2.6	2.8	2.8	215
220									4.3	4.5			3.1	3.5	3.8	3.8		2.4	2.6	2.6	220
225													2.8	3.2	3.4	3.3					225
230														2.8							230
235														2.4							235
I		92				92				92/46				92				100			I
II		92				92				92/92				92				100			II
III		92				92				92/92				92				100			III
IV		46				46				92/92				92				100			IV
V		0				46				46/92				92				100			V

* bi-parted folding jib

Lifting capacities at the folding jib.



142 ft - 197 ft



0°/15°/30°/45°
95 ft*



360°



110 230 lbs

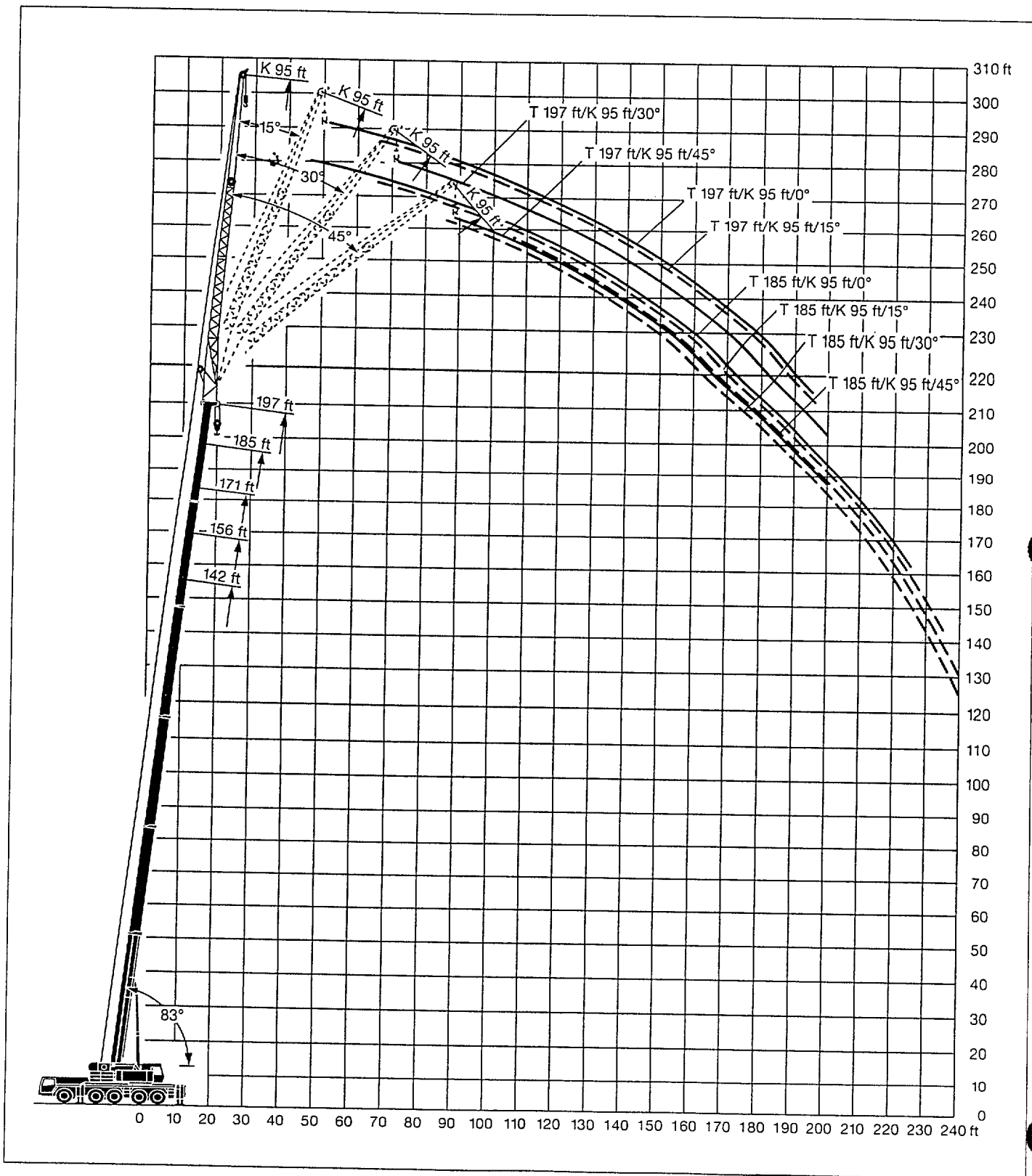


ft	142 ft				156 ft				171 ft				185 ft				197 ft				ft						
	95 ft				95 ft				95 ft				95 ft				95 ft										
	0°	15°	30°	45°	0°	15°	30°	45°	0°	15°	30°	45°	0°	15°	30°	45°	0°	15°	30°	45°	0°	15°	30°	45°			
40	12.6				11.6				10.7																40		
45	12.6				11.6				10.7																45		
50	12.5				11.6				10.7							9.7							7.6		50		
55	12.3				11.6				10.6						9.6								7.4		55		
60	12.1	10.7			11.4	9.9			10.4						9.4								7.2		60		
65	11.9	10.7			11.2	9.9			10.2						9.2								7.1		65		
70	11.7	10.5			11	9.8			10	9.1					9.1	8.3							6.9	6.4	70		
75	11.5	10.3			10.8	9.6			9.8	8.9					8.9	8.2							6.7	6.2	75		
80	11.3	10	7.7		10.5	9.4	7.4		9.7	8.7					8.7	8							6.5	6	80		
85	11	9.7	7.4		10.3	9.2	7.2		9.5	8.5					8.6	7.9							6.3	5.7	85		
90	10.7	9.4	7.2		10	9	7		9.3	8.3	6.8				8.4	7.8	6.5						6.1	5.5	4.8	90	
95	10.4	9	7	6.1	9.8	8.8	6.8		9.1	8.1	6.6				8.3	7.7	6.3						5.9	5.3	4.7	95	
100	10.1	8.7	6.8	6	9.5	8.5	6.6	5.8	8.9	7.9	6.4	5.8			8.1	7.5	6.2						5.7	5.1	4.5	100	
105	9.8	8.3	6.6	5.9	9.3	8.2	6.5	5.8	8.7	7.8	6.3	5.7	8		7.3	6	5.3						5.5	4.9	4.3	3.9	105
110	9.5	8	6.4	5.8	9.1	7.9	6.3	5.7	8.5	7.6	6.1	5.6	7.7		7.1	5.9	5.3						5.3	4.7	4.2	3.9	110
115	9.3	7.7	6.3	5.7	8.9	7.6	6.2	5.6	8.3	7.4	6	5.5	7.4		6.9	5.8	5.3						5.1	4.5	4	3.8	115
120	9	7.4	6.1	5.5	8.7	7.4	6	5.5	8.2	7.2	5.9	5.4	7.1		6.7	5.7	5.2						4.8	4.3	3.9	3.6	120
125	8.7	7.2	5.9	5.4	8.5	7.1	5.9	5.4	8	7	5.8	5.3	6.8		6.5	5.6	5.1						4.6	4.1	3.7	3.5	125
130	8.4	6.9	5.8	5.4	8.3	6.9	5.7	5.3	7.8	6.8	5.6	5.2	6.5		6.3	5.4	5.1						4.4	3.9	3.6	3.4	130
135	8	6.7	5.7	5.3	8	6.7	5.6	5.2	7.7	6.6	5.5	5.1	6.3		6.1	5.3	5						4.2	3.8	3.5	3.3	135
140	7.7	6.5	5.5	5.2	7.8	6.5	5.5	5.1	7.5	6.5	5.4	5	6		5.8	5.3	5						4	3.6	3.3	3.2	140
145	7.4	6.4	5.4	5.1	7.5	6.3	5.4	5.1	7.3	6.3	5.3	4.9	5.8		5.6	5.2	4.9						3.8	3.5	3.2	3.1	145
150	7.2	6.2	5.3	5	7.2	6.2	5.3	5	7	6.1	5.2	4.9	5.6		5.4	5.1	4.8						3.6	3.4	3.1	3	150
155	6.9	6	5.2	5	7	6	5.2	4.9	6.8	6	5.1	4.9	5.4		5.2	5	4.8						3.4	3.2	3	2.9	155
160	6.7	5.9	5.1	4.9	6.8	5.9	5.1	4.9	6.5	5.9	5	4.8	5.2		5	4.9	4.7						3.2	3.1	2.9	2.8	160
165	6.5	5.8	5	4.9	6.5	5.8	5	4.9	6.2	5.7	5	4.8	5		4.8	4.8	4.7						3.1	3	2.8	2.7	165
170	6.3	5.7	4.9	4.9	6.3	5.7	4.9	4.9	6	5.6	4.9	4.8	4.8		4.7	4.7	4.6						2.9	2.8	2.7	2.6	170
175	6.1	5.6	4.8	4.8	6.1	5.6	4.9	4.8	5.8	5.5	4.8	4.7	4.6		4.5	4.5	4.6						2.7	2.7	2.6	2.6	175
180	5.9	5.5	4.8	4.8	6	5.5	4.8	4.8	5.6	5.4	4.8	4.7	4.5		4.4	4.4	4.5						2.6	2.6	2.5	2.5	180
185	5.7	5.4	4.8	4.8	5.8	5.4	4.7	4.8	5.4	5.3	4.7	4.7	4.3		4.2	4.2	4.3						2.4	2.4	2.4	2.4	185
190	5.3	5.3	4.8	4.8	5.4	5.3	4.7	4.8	5.2	5.1	4.6	4.7	4.2		4.1	4.1	4.2						2.3	2.3	2.3	2.4	190
195	4.9	5.2	4.8	4.8	5	5.2	4.7	4.8	4.8	5	4.6	4.7	4		3.9	4	4						2.2	2.2	2.2	2.3	195
200	4.5	5	4.8	4.8	4.6	5.1	4.7	4.8	4.5	4.9	4.6	4.7	3.9		3.8	3.8	3.9									2.2	200
205	4.1	4.6	4.7		4.2	4.8	4.7	4.8	4	4.7	4.6	4.7	3.8		3.7	3.7	3.8										205
210	3.7	4.2	4.5		3.8	4.4	4.7	4.8	3.7	4.4	4.6	4.7	3.6		3.6	3.6	3.7										210
215	3.3	3.7	4		3.4	4	4.3	4.4	3.4	3.9	4.4	4.6	3.4		3.5	3.5	3.6										215
220					3.1	3.6	3.9		3.3	3.6	4	4.2	3		3.4	3.4	3.6										220
225					2.9	3.2	3.4		3.1	3.2	3.5	3.7	2.7		3.2	3.3	3.5										225
230									3	3.1	3.1				2.9	3.2	3.4										230
235									2.9	3	3				2.6	3	3.1										235
240									2.8	2.9	3				2.6	2.7											240
I		92				92				92/46					92									100		I	
II		92				92				92/92					92									100		II	
III		92				92				92/92					92									100		III	
IV		46				46				92/92					92									100		IV	
V		0				46				46/92					92									100		V	

* three-parted folding jib

Lifting heights.

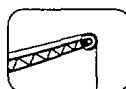
Folding jib.



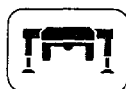
Lifting capacities at the folding jib.



142 ft - 197 ft



0°/15°/30°/45°
118 ft*



360°



110 230 lbs

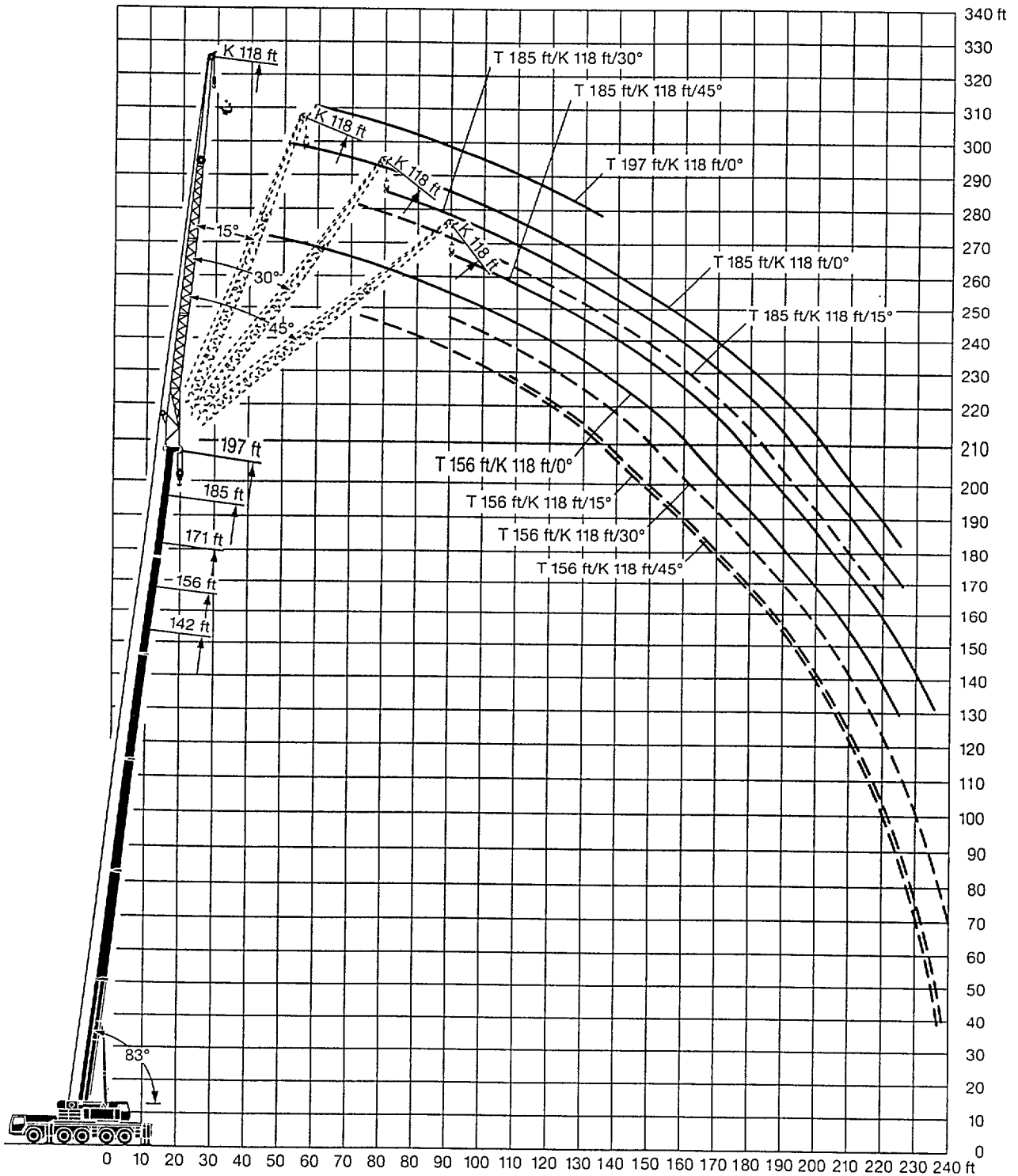
85%

ft	142 ft				156 ft				171 ft				185 ft				197 ft	ft
	118 ft				118 ft				118 ft				118 ft				118 ft	
	0°	15°	30°	45°	0°	15°	30°	45°	0°	15°	30°	45°	0°	15°	30°	45°	0°	
40	8.2																	40
45	8.1																	45
50	8				7.8				7.3									50
55	8				7.7				7.3				6.5					55
60	7.9				7.6				7.3				6.5				5.3	60
65	7.8				7.5				7.1				6.4				5.2	65
70	7.7	7.2			7.4				7.1				6.3				5	70
75	7.6	7			7.4	6.7			7	6.2			6.2	5.6			4.9	75
80	7.5	6.8			7.3	6.5			6.8	6.1			6.1	5.5			4.7	80
85	7.4	6.7			7.2	6.3			6.7	6			6	5.4			4.6	85
90	7.3	6.5			7	6.2			6.5	5.9			5.9	5.4			4.4	90
95	7.2	6.2	4.8		6.8	6			6.4	5.7			5.8	5.3			4.2	95
100	7.1	6.1	4.7		6.7	5.8	4.5		6.2	5.6	4.3		5.7	5.2	4.1		4.1	100
105	6.9	5.9	4.5		6.5	5.6	4.4		6.1	5.4	4.2		5.6	5.1	4		3.9	105
110	6.7	5.7	4.4		6.4	5.5	4.2		6	5.3	4.1		5.4	4.9	3.9		3.7	110
115	6.5	5.5	4.2	3.6	6.2	5.3	4.1		5.8	5.1	4		5.3	4.8	3.7		3.6	115
120	6.3	5.3	4.1	3.6	6.1	5.2	3.9	3.4	5.7	5	3.8	3.4	5.2	4.7	3.7	3.2	3.4	120
125	6.1	5.1	3.9	3.5	5.9	5	3.9	3.4	5.6	4.8	3.7	3.3	5.1	4.6	3.6	3.2	3.2	125
130	5.9	4.9	3.8	3.4	5.8	4.8	3.7	3.3	5.4	4.7	3.6	3.2	5	4.4	3.5	3.1	3	130
135	5.7	4.7	3.7	3.3	5.6	4.6	3.6	3.2	5.3	4.5	3.5	3.2	4.8	4.3	3.4	3	2.9	135
140	5.4	4.6	3.6	3.3	5.4	4.5	3.5	3.2	5.2	4.4	3.4	3.1	4.6	4.2	3.3	3		140
145	5.2	4.4	3.5	3.2	5.2	4.3	3.4	3.1	5.1	4.3	3.4	3.1	4.4	4.1	3.2	3		145
150	5	4.2	3.4	3.1	5	4.2	3.3	3.1	4.9	4.1	3.3	3	4.2	4	3.1	2.9		150
155	4.9	4.1	3.3	3	4.9	4.1	3.3	3	4.8	4	3.2	2.9	4	3.9	3.1	2.9		155
160	4.7	4	3.2	3	4.7	4	3.2	2.9	4.6	3.9	3.1	2.9	3.9	3.8	3	2.8		160
165	4.5	3.8	3.1	2.9	4.5	3.8	3.1	2.9	4.5	3.8	3	2.8	3.7	3.7	2.9	2.8		165
170	4.4	3.7	3.1	2.9	4.4	3.7	3.1	2.8	4.3	3.7	3	2.8	3.6	3.5	2.9	2.7		170
175	4.2	3.6	3	2.8	4.2	3.6	3	2.8	4.2	3.6	2.9	2.7	3.4	3.4	2.8	2.7		175
180	4.1	3.5	2.9	2.8	4.1	3.5	2.9	2.8	4.1	3.5	2.9	2.7	3.3	3.2	2.7	2.7		180
185	3.9	3.4	2.9	2.8	4	3.4	2.9	2.7	3.9	3.4	2.8	2.7	3.1	3.1	2.7	2.6		185
190	3.8	3.3	2.8	2.7	3.9	3.4	2.8	2.7	3.8	3.3	2.7	2.7	3	2.9	2.7	2.6		190
195	3.7	3.3	2.7	2.7	3.8	3.3	2.7	2.7	3.7	3.3	2.7	2.7	2.9	2.8	2.6	2.6		195
200	3.6	3.2	2.7	2.7	3.6	3.2	2.7	2.7	3.6	3.2	2.7	2.7	2.8	2.7	2.6	2.6		200
205	3.5	3.1	2.7	2.7	3.5	3.1	2.7	2.7	3.5	3.1	2.6	2.6	2.6	2.6	2.6	2.6		205
210	3.4	3.1	2.7	2.7	3.4	3.1	2.7	2.7	3.4	3.1	2.5	2.6	2.5	2.5	2.5	2.5		210
215	3.2	3	2.7	2.7	3.3	3	2.7	2.7	3.2	3	2.5	2.6	2.4	2.4	2.4	2.5		215
220	3	2.9	2.7	2.7	3	3	2.7	2.7	2.8	3	2.5	2.6	2.3	2.3	2.3	2.4		220
225	2.6	2.9	2.7		2.7	2.9	2.7	2.7	2.5	2.9	2.5	2.6	2.2		2.2	2.3		225
230		2.8	2.7			2.9	2.7	2.7		2.9	2.5	2.6				2.2		230
235		2.5	2.7			2.6	2.7	2.7		2.6	2.5	2.6				2.2		235
240						2.3	2.5				2.5	2.6						240
245												2.5						245
I		92				92				92/46				92			100	I
II		92				92				92/92				92			100	II
III		92				92				92/92				92			100	III
IV		46				46				92/92				92			100	IV
V		0				46				46/92				92			100	V

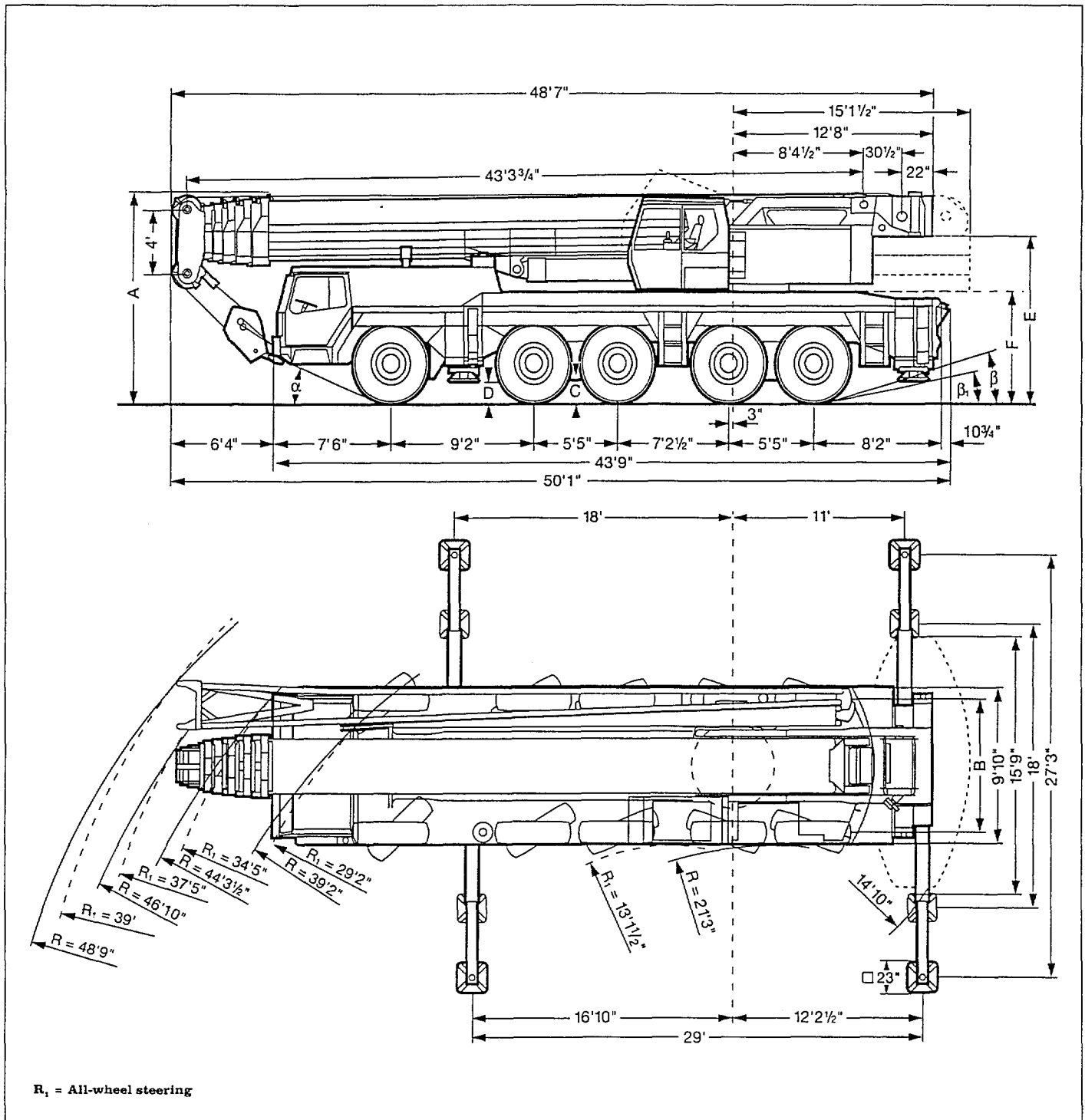
* four-parted folding jib

Lifting heights.

Folding jib.



Dimensions.



16.00 R 25	Dimensions mm									
	A	A ₆ **	B	C	D	E	F	α	β	β_1
	13'2"	12'7 1/2"	8'5"	18'1/2"	14'3/4"	10'1"	6'11 1/2"	23°	16°	11°

* lowered

Weights.

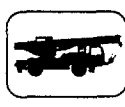







Axle	1	2	3	4	5	Total weight
lbs	26500	26500	26500	26500	26500	132500

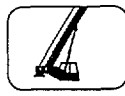







Load (kips)	No. of sheaves	No. of lines	Weight lbs
176	9	18	5290
150	7	14	3240
110	5	11	2760
75	3	7	1985
33	1	3	1675
11	-	1	860

Working speeds.



	1	2	3	4	5	R	
							
mph 	9.3	14.3	22.3	33	47	8	-
mph 	5	8	13	19.3	27.3	4.7	45 %
	16.00 R 25						



Drive	infinitely variable	Rope diameter / Rope length	Max. single line pull
	0 - 460 ft/min single line	1 1/16" / 970'	22800 lbs
	0 - 460 ft/min single line	1 1/16" / 970'	22800 lbs
	0 - 1.5 rpm		
	approx. 50 seconds to reach 83° boom angle		
	approx. 400 seconds for boom extension from 43 ft - 197 ft		

Crane carrier.

Frame:	Liebherr designed and manufactured, box type, torsion resistant, all-welded construction made of high-tensile structural steel.
Outriggers:	4 sliding beams with hydraulic extension cylinders and hydraulic support pad jacks. Front outriggers mounted between axles 1 and 2, rear outriggers at rear of truck chassis.
Engine:	Diesel, 8 cylinder, watercooled, make Liebherr, type D 9408 TI-E, output 400 kW DIN (544 HP) at 2100 rpm, acc. to ECE-R 24.03 and ECE-R 49.02 (EURO II), max. torque 1640 lbs-ft at 1575 rpm. Fuel tank capacity: 92 gallons.
Transmission:	Allison, type CLBT 755, automatic transmission with torque converter and hydrodynamic retarder brake. 5 forward speeds, 1 reverse. Transfer case with differential, off-road range and additional activation of front wheel drive.
Axles:	Heavy duty crane truck axles, all 5 axles sprung. All axles steered. Axles 1, 2, 4 and 5 are planetary axles, intermediate differential at axle 4, all driven axles with transverse differential.
Cardan shafts:	All cardan shafts with 70° diagonal toothing.
Suspension:	All axles with hydropneumatic suspension and automatic levelling. Load equalization between axle pairs 1 + 2 and 4 + 5. Axles can be locked hydraulically.
Tyres:	10 tyres, all axles with single tyres. Tyre size: 16.00 R 25.
Steering:	ZF semi-integral power steering, dual circuit system, with hydraulic servo system and auxiliary pump circuit.
Brakes:	Service brake: Servo-air brakes acting on all wheels, dual circuit system. Hand brake: Spring loaded, acting on all wheels of axles 2 to 5.
Operator's cab:	Large-area, galvanized all-steel cab with resilient mountings, safety glass windows and full range of instruments.
Electrical system:	24 V DC, 2 batteries, lighting according to countries' regulations.

Crane superstructure.

Frame:	Liebherr-made torsion resistant, welded construction of high-tensile steel. Linked to crane carrier by a triple roller slewing ring for 360° continuous rotation.
Crane engine:	Diesel, 4 cylinder, watercooled, make Liebherr, type D 924 TI-E, output 149 kW DIN (203 HP) at 1800 rpm, acc. to ISO 8178 C 1 acc. to California Smoke Cycle, max. torque 656 lbs-ft at 1400 rpm. Fuel tank capacity: 79 gallons.
Crane drive:	Diesel-hydraulic, with 2 axial piston swivelling pumps with servo control and automatic output regulation.
Crane control:	By 2 self-centering control levers (joy-sticks).
Hoist gear:	Axial piston variable displacement motor, hoist drum with integrated planetary gear and spring loaded static brake.
Luffing gear:	Differential hydraulic ram with nonreturn valves.
Slewing gear:	Axial piston fixed displacement motor, planetary gear, slewing pinion and spring loaded static brake.
Crane cab:	All-steel construction, equipped conveniently, controls and instruments, ergonomically arranged. Cab tiltable backwards.
Safety devices:	LICCON safe load indicator, hoist limit switch, safety valves against rupture of pipes and hoses.
Telescopic boom:	1 base section and 5 telescopic sections. Individual hydraulic extension of all sections. Boom length: 43 ft - 197 ft.
Folding jib:	Double folding jib 40 ft - 118 ft long for mounting on telescopic boom at 0°, 15°, 30° and 45°.
Electrical system:	24 V DC, 2 batteries.