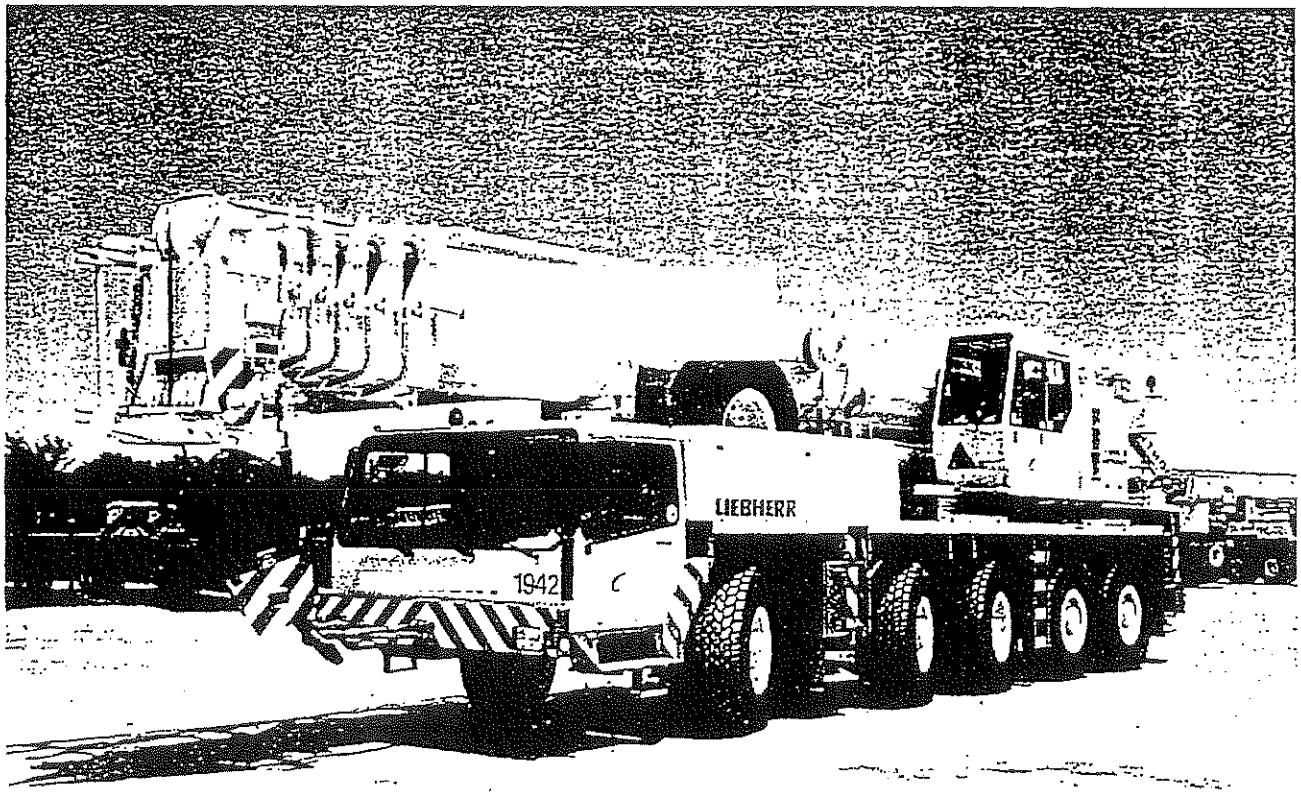


Telescopic Truck Crane

LTM 1120/1

Telescopic boom 184 ft



Lifting capacities at telescopic boom.



41 ft - 184 ft



360°



77 200 lbs



ft	ft												ft	
	41 ft	54 ft	68 ft	80 ft	94 ft	107 ft	120 ft	133 ft	146 ft	159 ft	172 ft	184 ft		
9	340*												9	
10	288	243											10	
11	268	243											11	
12	250	238	221										12	
13	233	229	215										13	
14	220	218	205	189	163								14	
15	207	207	196	181	159								15	
16	196	196	188	174	153								16	
17	186	186	181	167	147	122							17	
18	177	177	173	161	142	121							18	
20	158	158	157	149	132	117	96						20	
22	143	143	143	139	123	111	94						22	
24	130	130	130	128	115	104	90.5	77	56.1				24	
26	119	119	118	116	108	98	86	77	53.8				26	
28	109	109	108	106	102	92.5	82.5	74.5	52.6	48.5			28	
30	100	100	99	97	95.5	87.5	78.5	71.5	51.7	48.2	38.4		30	
32	92	92	91.5	89.5	88.5	83	75	69	51.7	48	38.3		32	
34			85	83	82	78.5	71.5	66	51.7	47.4	38.2	35.9	30.2	34
36			79.5	77.5	76.5	73.5	68.5	63.5	51.7	46.7	38.1	35.6	29.6	36
38			73.5	71.5	72.5	68.5	65.5	61	51.7	45.9	38	35.3	29.1	38
40			69.5	66.5	69	64	62.5	58.7	51.2	44.9	37.8	34.8	28.5	40
45			61.5	56.8	58.8	53.9	53.1	53.3	46.8	41.4	36.6	32.6	27.1	45
50				48.8	50.6	46	48.2	47.2	42.8	38.1	34.3	30.5	25.7	50
55				42	43.9	39.7	43.4	41.5	39.1	35.1	31.8	28.5	24.3	55
60					38.3	36.4	38.3	37.6	35.4	32.3	29.4	26.6	23	60
65					33.4	33.7	34	33.4	31.3	29.8	27.3	24.9	21.7	65
70					29.4	31.4	30.4	29.9	28	27.3	25.3	23.4	20.6	70
75						28.8	27.9	26.9	25	24.7	23.5	21.9	19.5	75
80						25.9	25.1	24.2	22.4	22.2	21.8	20.6	18.4	80
85						23.3	22.5	21.6	20.1	20	20.3	19.4	17.4	85
90							20.3	19.9	17.9	17.8	18.4	18.3	16.5	90
95							18.4	18.3	16.6	15.9	16.5	17.2	15.7	95
100								16.6	15.6	14.3	15.5	15.8	14.9	100
105								15.1	14.6	13.5	14.6	14.2	14	105
110								13.8	13.8	12.7	13.6	12.8	12.7	110
115									12.8	12	12.5	11.6	11.4	115
120									12	11.4	11.4	10.4	10.2	120
125										10.8	10.4	9.3	9.2	125
130										10.3	9.4	8.5	8.3	130
135										9.6	8.7	7.7	7.6	135
140											8	7	6.9	140
145											7.4	6.4	6.2	145
150											7	5.8	5.6	150
155												5.3	5.1	155
160												4.7	4.6	160
165													4.1	165
170													3.6	170
175													3.1	175
I	0		0/0	46/0	92/0/0	92/0	92/46/0	92/46/0	92/0/0	92/0	92/46	92	100	I
II	0		46/0	46/0	46/92/0	92/46	92/46/92	46/92/92	92/92/46	92/92	92/92	92	100	II
III	0		0/0	0/0	0/46/46	0/46	46/46/46	46/46/92	46/92/92	92/92	92/92	92	100	III
IV	0		0/0	0/46	0/0/46	0/46	0/46/46	46/46/46	46/92/92	46/92	92/92	92	100	IV
V	0		0/46	0/46	0/0/46	0/46	0/46/46	46/46/46	46/46/92	46/92	46/92	92	100	V

0 over rear
* with special equipment

Lifting capacities are given in kips (1,000 lbs).



41 ft - 184 ft



360°



55 100 lbs



85%

ft	41 ft	54 ft	68 ft	80 ft	94 ft	107 ft	120 ft	133 ft	146 ft	159 ft	172 ft	184 ft	ft	
10	242												10	
11	230												11	
12	218	201											12	
13	206	195											13	
14	194	187	172	149									14	
15	183	178	164	145									15	
16	171	170	158	139									16	
17	162	161	152	134	111								17	
18	153	152	146	129	110								18	
20	136	136	134	120	107	87.5							20	
22	122	122	120	112	101	85.5							22	
24	110	110	108	104	94.5	82.5	70	51					24	
26	99.5	99	97	95	89	78.5	70	48.9					26	
28	91	90.5	88.5	85.5	81.5	75	67.5	47.8	44.1				28	
30	83.5	82.5	80.5	80	73.5	70.5	65	47	43.8	34.9			30	
32	77	76	74.5	73.5	67	65	62.5	47	43.6	34.8			32	
34		70	68.5	68	61.5	60	59.4	47	43.1	34.7	32.6	27.5	34	
36		65.5	63	63	57	57	55.7	47	42.4	34.6	32.4	26.9	36	
38		61.5	57.2	57.9	52.3	54.4	52.1	47	41.7	34.5	32.1	26.4	38	
40		57.4	52.1	53.3	48.1	51.7	49	46.2	40.8	34.3	31.7	25.9	40	
45		47	44.2	44.3	43.4	43.8	42.5	39.8	37.6	33.3	29.7	24.6	45	
50			39.2	36.9	38.9	37.8	36.8	34.3	33.3	31.1	27.8	23.3	50	
55			34.1	33	34.2	33.4	32	29.7	29.1	28.5	25.9	22.1	55	
60				29.7	29.3	29	28	25.8	25.4	25.6	24.2	20.9	60	
65				25.8	26	25.1	25.4	23.2	22.2	22.5	22.6	19.8	65	
70				23.4	23.1	22	22.5	21.5	19.7	20.7	20.5	18.7	70	
75					20.4	19.4	19.8	19.8	18.3	19.3	18.3	17.5	75	
80					18.2	17.7	17.5	18.1	17	17.7	16.4	16	80	
85					16.2	16.6	15.5	16.2	15.8	15.6	14.7	14.3	85	
90						15.1	13.7	15.2	14.6	13.9	13	12.8	90	
95							14.2	12.9	14.1	13.2	12.3	11.4	95	
100								12.2	12.9	11.8	10.9	10	9.9	100
105								11.5	11.7	10.5	9.6	8.8	8.7	105
110								10.7	10.6	9.5	8.7	7.9	7.7	110
115									9.6	8.6	7.8	7	6.8	115
120									8.7	7.8	7	6.2	6	120
125										7.1	6.3	5.5	5.3	125
130										6.4	5.7	4.8	4.7	130
135										5.7	5.1	4.2	4.1	135
140											4.5	3.6	3.5	140
145											4	3	3	145
150											3.4	2.5	2.5	150
I	0	0/0	46/0	92/0/0	92/0	92/46/0	92/46/0	92/0/0	92/0	92/46	92	100	I	
II	0	46/0	46/0	46/92/0	92/46	92/46/92	46/92/92	92/92/46	92/92	92/92	92	100	II	
III	0	0/0	0/0	0/46/46	0/46	46/46/46	46/46/92	46/92/92	92/92	92/92	92	100	III	
IV	0	0/0	0/46	0/0/46	0/46	0/46/46	46/46/46	46/92/92	46/92	92/92	92	100	IV	
V	0	0/46	0/46	0/0/46	0/46	0/46/46	46/46/46	46/46/92	46/92	46/92	92	100	V	

Lifting capacities at telescopic boom.



41 ft - 184 ft



360°



33 100 lbs



85%

ft	41 ft	54 ft	68 ft	80 ft	94 ft	107 ft	120 ft	133 ft	146 ft	159 ft	172 ft	184 ft	ft
10	241												10
11	228												11
12	214	201											12
13	199	195											13
14	186	184	172	149									14
15	173	173	164	145									15
16	162	162	158	139									16
17	153	152	149	132	110								17
18	144	143	139	124	108								18
20	126	125	120	109	101	87							20
22	113	112	103	96.5	88	81							22
24	101	99	89	86.5	77	74.5	68.5	51					24
26	91	87	78	76.5	68	70	66	48.9					26
28	81	79	69	68.5	64	64	61	47.8	44.1				28
30	71	74	61	61.5	60.5	58	55.7	46.8	43.8	34.9			30
32	62.5	66.5	58.1	55.7	56.8	53.8	51	46	43.6	34.8			32
34		59.8	54.9	50.9	52.9	49.9	47.1	43.7	41.8	34.6	32.6	27.5	34
36		54.3	51.6	48.5	49	46.2	43.7	40.5	39	34.3	32.4	26.9	36
38		48.7	48.2	46.2	45.1	42.6	41	38	36.1	34.1	32.1	26.4	38
40		43.9	44.9	43.8	41.6	39.3	38.4	36.3	33.5	33.2	31.5	25.9	40
45		35.5	36.4	36.6	35.7	33	32.4	32	29.8	29.8	28	24.6	45
50			30.5	31.7	30.7	28.6	27.7	27.7	27	26.2	24.3	22.8	50
55			26	27.7	26.1	25.8	23.8	24.8	24	22.6	21	20.5	55
60				23.7	22.2	23	21.4	22.6	21	19.7	18.1	17.7	60
65				20.6	19.9	21.1	19.7	19.9	18.4	17.2	15.8	15.4	65
70				18.1	18	18.7	17.9	17.5	16.2	15.1	13.7	13.4	70
75					16	16.5	15.9	15.4	14.1	13.1	12	11.7	75
80					14.1	14.6	13.9	13.4	12.2	11.2	10.3	10.1	80
85					12.5	13	12.2	11.7	10.5	9.6	8.8	8.6	85
90						11.5	10.8	10.3	9.2	8.3	7.6	7.4	90
95						10.3	9.6	9.1	8.1	7.3	6.5	6.3	95
100							8.5	8.1	7.1	6.3	5.5	5.3	100
105							7.6	7.2	6.2	5.4	4.6	4.5	105
110							6.7	6.5	5.4	4.7	3.9	3.7	110
115								5.7	4.8	4	3.2	3	115
120								5	4.1	3.4			120
125									3.6	2.8			125
130									3	2.4			130
135									2.5				135
I	0	0/0	46/0	92/0/0	92/0	92/46/0	92/46/0	92/0/0	92/0	92/46	92	100	I
II	0	46/0	46/0	46/92/0	92/0	92/46/92	46/92/92	92/92/46	92/92	92/92	92	100	II
III	0	0/0	0/0	0/46/46	0/92	46/46/46	46/46/92	46/92/92	92/92	92/92	92	100	III
IV	0	0/0	0/46	0/0/46	0/46	0/46/46	46/46/46	46/92/92	46/92	92/92	92	100	IV
V	0	0/46	0/46	0/0/46	0/46	0/46/46	46/46/46	46/46/92	46/92	46/92	92	100	V



41 ft - 184 ft



360°



15 400 lbs



85%

ft	41 ft	54 ft	68 ft	80 ft	94 ft	107 ft	120 ft	133 ft	146 ft	159 ft	172 ft	184 ft	ft
10	240												10
11	223												11
12	207	199											12
13	191	189											13
14	177	177	166	143									14
15	165	164	151	133									15
16	153	152	135	119									16
17	143	140	122	108	98.5								17
18	134	128	111	99	90.5								18
20	116	104	90.5	87	79.5	77.5							20
22	98.5	90	77.5	75	73	68.5							22
24	84.5	81.5	71.5	66.5	66	61	58.2	50.7					24
26	72.5	71	66.5	62.5	58.5	54.4	52.1	49.5					26
28	62.5	63	59.8	56.6	53.1	49	47.2	45.7	40.3				28
30	53.7	56.1	53.4	50.8	48.5	44.3	42.7	41.8	38.6	34.5			30
32	46.9	50.4	48.3	47	44.2	42.1	39	38.3	36.9	34.1			32
34		45.4	44.1	44.2	40.5	39.5	35.8	36.1	34.8	32.6	30.2	27	34
36		41	40.9	41.1	37.4	36.7	34.1	33.9	32.3	30.3	28	25.7	36
38		36.6	37.7	38.1	34.3	35	32.6	31.8	29.9	27.9	25.8	24.4	38
40		32.7	34.6	35.3	32.2	33.1	30.9	29.8	27.6	25.8	23.8	23	40
45		26	27.7	29.3	28	27.9	26.2	25.1	23.2	21.6	19.8	19.2	45
50			22.7	24.4	24.1	23.8	22.4	21.4	19.7	18.3	16.6	16.1	50
55			18.8	20.4	20.4	20.5	19.2	18.3	16.7	15.5	13.9	13.5	55
60				17.3	17.3	17.6	16.4	15.7	14.2	13.1	11.7	11.3	60
65				14.7	14.8	15	14.1	13.5	12.1	11	9.7	9.5	65
70				12.6	12.6	12.9	12	11.5	10.1	9.2	8.1	7.9	70
75					10.8	11	10.2	9.7	8.5	7.6	6.7	6.5	75
80					9.3	9.5	8.7	8.2	7.1	6.3	5.5	5.3	80
85					7.9	8.3	7.5	7.1	6	5.2	4.3	4.2	85
90						7.2	6.5	6.1	5	4.2			90
95						6.3	5.6	5.2	4.2				95
100							4.8	4.4					100
105							4	3.8					105
110							3.4	3.1					110
I	0	0/0	46/0	92/0/0	92/0	92/46/0	92/46/0	92/0/0	92/0	92/46	92	100	I
II	0	46/0	46/0	46/92/0	92/0	92/46/92	46/92/92	92/92/46	92/92	92/92	92	100	II
III	0	0/0	0/0	0/46/46	0/92	46/46/46	46/46/92	46/92/92	92/92	92/92	92	100	III
IV	0	0/0	0/46	0/0/46	0/46	0/46/46	46/46/46	46/92/92	46/92	92/92	92	100	IV
V	0	0/46	0/46	0/0/46	0/46	0/46/46	46/46/46	46/46/92	46/92	46/92	92	100	V

TAB 110101

Lifting capacities at telescopic boom.



41 ft - 184 ft



360°



0 lbs



85%

ft	41 ft	54 ft	68 ft	80 ft	94 ft	107 ft	120 ft	133 ft	146 ft	159 ft	172 ft	184 ft	ft
10	235												10
11	217												11
12	200	197											12
13	184	183											13
14	170	164	140	119									14
15	157	145	121	105									15
16	145	127	107	98									16
17	132	113	96	90	86								17
18	119	102	87	82.5	80								18
20	93	88.5	80.5	74.5	68.5	62.5							20
22	78	75.5	69.5	65	60.5	55.4							22
24	65.5	64.5	60.5	57.6	53.5	50.8	45.7	44.9					24
26	56.1	55.7	53.6	52.6	47	47.2	43.3	41.5					26
28	48.4	49.2	48.1	47.5	43.2	43.1	39.9	37.9	34.9				28
30	41.5	43.5	42.8	42.5	40.3	39	36.4	34.4	31.6	29.3			30
32	36	38.9	38.5	38.6	36.6	35.6	33.2	31.4	28.9	26.8			32
34		35	35	35.3	33.5	32.7	30.6	28.9	26.6	24.6	22.4	21.6	34
36		31.5	32.1	32.5	30.9	30.2	28.2	26.7	24.5	22.7	20.6	19.9	36
38		28	29.1	29.6	28.3	27.7	25.9	24.5	22.5	20.8	18.8	18.2	38
40		24.9	26.4	27.1	25.9	25.5	23.8	22.6	20.6	19	17.2	16.6	40
45		19.4	21.1	22.3	21.3	21.2	19.7	18.7	17	15.6	13.9	13.4	45
50			16.9	18.5	17.8	17.8	16.5	15.6	14	12.8	11.3	10.9	50
55			13.5	15.3	14.8	14.9	13.8	13.1	11.5	10.4	9	8.7	55
60				12.6	12.2	12.5	11.5	10.9	9.4	8.4	7.1	6.9	60
65				10.4	10	10.2	9.4	8.8	7.6	6.7	5.6	5.4	65
70				8.6	8.4	8.6	7.8	7.3	6.2	5.2			70
75					7.1	7.3	6.5	6.1	4.9				75
80					5.9	6.1	5.4	4.9					80
85					4.8	5.2	4.4	4					85
90						4.3	3.6						90
95						3.5							95
I	0	0/0	46/0	92/0/0	92/0	92/46/0	92/46/0	92/0/0	92/0	92/46	92	100	I
II	0	46/0	46/0	46/92/0	92/0	92/46/92	46/92/92	92/92/46	92/92	92/92	92	100	II
III	0	0/0	0/0	0/46/46	0/92	46/46/46	46/46/92	46/92/92	92/92	92/92	92	100	III
IV	0	0/0	0/46	0/0/46	0/46	0/46/46	46/46/46	46/92/92	46/92	92/92	92	100	IV
V	0	0/46	0/46	0/0/46	0/46	0/46/46	46/46/46	46/46/92	46/92	46/92	92	100	V

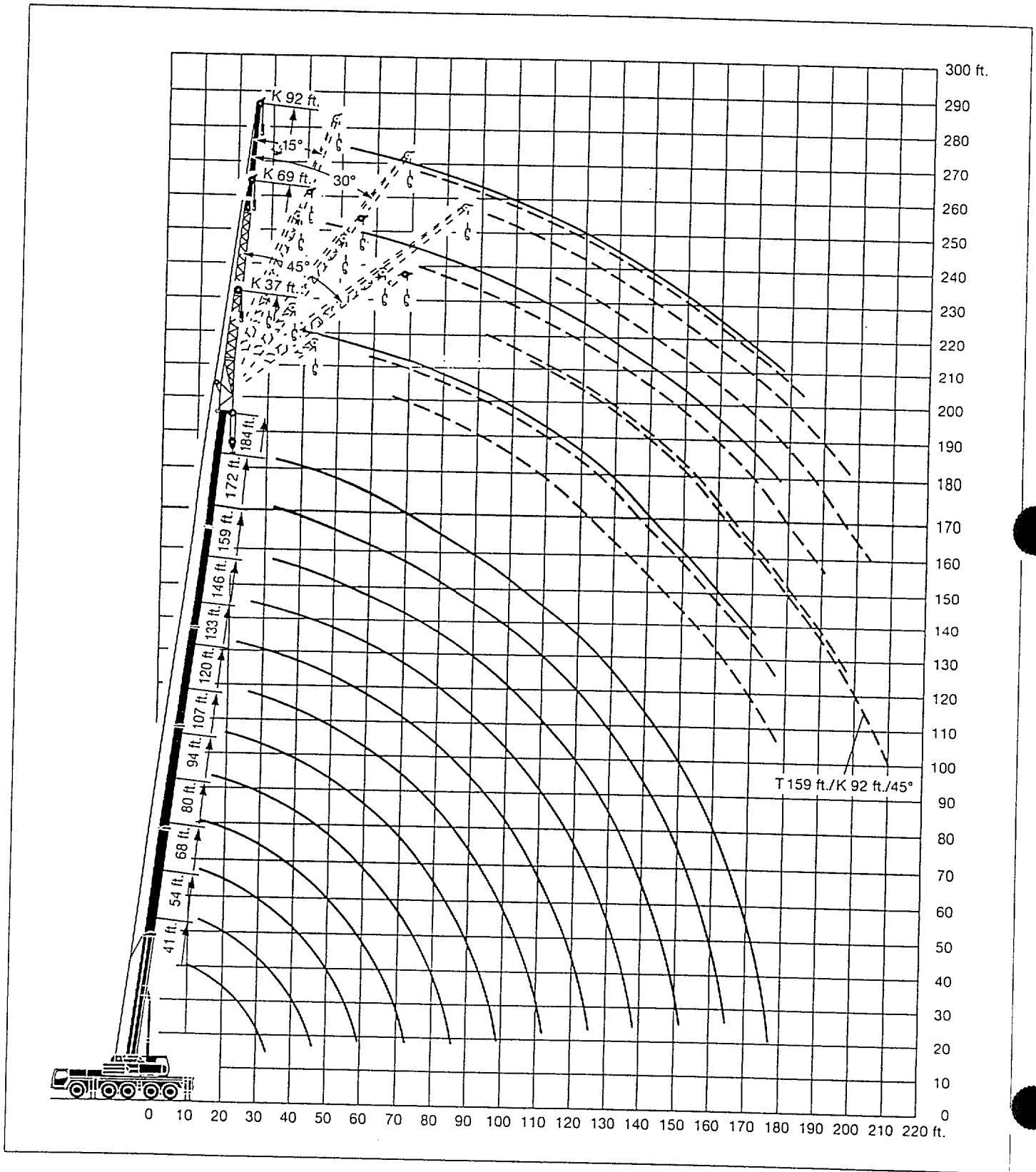
TAB 110103

Remarks referring to load charts.

- The tabulated lifting capacities do not exceed 85 % of the tipping load.
- The crane's structural steelwork is in accordance with DIN 15018, part 3. Design and construction of the crane comply with DIN 15018, part 2, and with F. E. M. regulations.
- The 85 % overturning limit values take into account wind force 5 = wind speed 20 mph.
- Lifting capacities are given in kips.
- The weight of the hook blocks and hooks must be deducted from the lifting capacities.
- Working radii are measured from the slewing centreline.
- The lifting capacities given for the telescopic boom only apply if the folding jib is taken off.
- Lifting capacities are subject to modifications.
- Lifting capacities above 243 kips only with additional pulley block / special equipment.

Lifting heights.

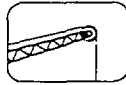
LTM 1120/1



Lifting capacities at the folding jib.



133 ft - 184 ft



37 ft



159 ft



360°



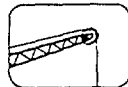
77 200 lbs

85%

ft	133 ft				146 ft				159 ft				172 ft				184 ft				ft			
	37 ft				37 ft				37 ft				37 ft				37 ft							
	0°	15°	30°	45°	0°	15°	30°	45°	0°	15°	30°	45°	0°	15°	30°	45°	0°	15°	30°	45°				
30	38.1																				30			
32	38.1																					32		
34	38				32.5																	34		
36	37.7				32.4																	36		
38	37.4				32.3																	38		
40	37	27.9			32	27.2				25.5					20.6						14.3	40		
45	35.2	26.4			30.5	25.8				24.5					19.7						14.3	45		
50	33.1	25.1	19.4		28.6	24.6				23.2	21.6				18.9	17.8					14.3	50		
55	30.9	23.9	18.7	15.9	26.6	23.5	18.7			21.9	20.3	16.3			18.1	16.9	15.6				14.3	13.7	55	
60	28.8	22.8	18.1	15.7	24.7	22.6	18	15.5		20.5	19.1	16.2	13.1		17.1	16.1	15	12.4		14.1	13.6	12.9	60	
65	26.9	21.8	17.4	15.3	23	21.7	17.3	15.2		19.3	18	16.2	13.1		16.1	15.2	14.4	12.4		13.4	12.9	12.2	65	
70	24.9	20.9	16.7	15	21.5	20.6	16.6	14.9		18.1	17	15.6	12.8		15.1	14.3	13.8	12.2		12.7	12.2	11.7	11.2	70
75	23.1	20.1	16	14.3	20	19.4	15.8	14.4		17.1	16.1	14.9	12.3		14.2	13.5	13.1	11.9		12	11.5	11.1	10.8	75
80	21.3	19.4	15.3	13.5	18.7	18.2	15.1	13.6		16	15.2	14.2	11.8		13.4	12.7	12.4	11.5		11.3	10.9	10.6	10.4	80
85	19.2	18.7	14.6	12.6	17.5	17.1	14.4	12.8		15	14.4	13.5	11.3		12.2	12	11.7	11		10.7	10.3	10.1	10	85
90	17.4	18	13.8	11.8	16.5	16.1	13.7	12		14.1	13.6	12.8	10.7		11.9	11.4	11.1	10.6		10.1	9.8	9.6	9.6	90
95	15.7	16.7	13.1	11.1	15.2	15.1	13	11.3		13.2	12.9	12.1	10.1		11.3	10.8	10.6	10.1		9.5	9.3	9.2	9.2	95
100	14.1	15	12.4	10.4	13.8	14.2	12.4	10.6		12.4	12.2	11.5	9.6		10.7	10.3	10.1	9.6		9	8.9	8.8	8.8	100
105	12.6	13.5	11.7	9.7	12.3	13.3	11.8	9.9		11.7	11.6	10.9	9.2		10.1	9.9	9.7	9.2		8.6	8.4	8.4	8.5	105
110	11.1	11.9	11	9.1	10.8	11.7	11.3	9.4		10.9	10.9	10.3	8.8		9.6	9.4	9.3	8.7		8.1	8.1	8.1	8.1	110
115	9.9	10.6	10.4	8.6	9.6	10.4	10.6	8.9		9.9	10.3	9.8	8.5		9.1	9	8.9	8.3		7.8	7.7	7.7	7.7	115
120	8.9	9.4	9.7	8.1	8.7	9.3	9.8	8.4		8.9	9.5	9.3	8.1		8.7	8.7	8.6	7.9		7.4	7.4	7.4	7.4	120
125	8	8.5	8.9	7.7	7.8	8.4	8.8	8		8.1	8.6	8.8	7.8		8.2	8.4	8.2	7.5		7.1	7.1	7.1	7	125
130	7.2	7.7	8	7.4	7	7.5	8	7.6		7.5	7.8	8.2	7.5		7.6	8	7.9	7.1		6.8	6.8	6.8	6.7	130
135	6.6	6.9	7.2	7	6.6	6.8	7.1	7.2		7.1	7.4	7.5	7.3		6.8	7.3	7.5	6.8		6.4	6.5	6.5	6.4	135
140	6.3	6.5	6.5	6.5	6.2	6.5	6.5	6.6		6.7	7	6.8	6.8		6.1	6.6	7	6.5		5.9	6.2	6.2	6.1	140
145	6.1	6.3	6.2	5.7	5.9	6.1	6.2	6		6.3	6.7	6.6	6.2		5.4	5.9	6.3	6.2		5.2	5.7	6	5.9	145
150	5.9	6	5.8	4.8	5.7	5.8	5.9	5.9		5.9	6.3	6.4	5.5		4.8	5.3	5.6	5.8		4.6	5.1	5.4	5.6	150
155	5.6	5.7	5.5	4.3	5.4	5.5	5.6	5.7		5.4	5.7	5.9	5.2		4.3	4.7	5	5.2		4	4.5	4.8	5	155
160					5.2	5.2	5.3	5.5		4.9	5.2	5.4	5		3.7	4.1	4.4	4.5		3.5	3.9	4.2	4.4	160
165					4.9	4.9	5	5.2		4.4	4.6	4.8	4.6		3.3	3.6	3.8	4		3	3.4	3.7	3.8	165
170					4.4	4.6	4.6	4.5		3.8	4.1	4.2	4.2		2.7	3.1	3.3	3.4		2.6	2.9	3.2	3.3	170
175										3.3	3.5	3.7	3.6		2.2	2.5	2.8	2.8		2.1	2.4	2.7	2.8	175
180										2.8	3	3.1					2.2	2.2				2.2	2.2	180
I		92/ 0				92/ 0					92/46					92					100		I	
II		92/46				92/92					92/92					92					100		II	
III		46/92				92/92					92/92					92					100		III	
IV		46/92				46/92					92/92					92					100		IV	
V		46/92				46/92					46/92					92					100		V	



133 ft - 184 ft



69 ft



360°



77 200 lbs



85%

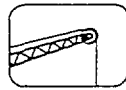
ft	133 ft				146 ft				159 ft				172 ft				184 ft				ft					
	69 ft				69 ft				69 ft				69 ft				69 ft									
	0°	15°	30°	45°	0°	15°	30°	45°	0°	15°	30°	45°	0°	15°	30°	45°	0°	15°	30°	45°						
40	16.8				15.5																40					
45	16.4				15.2																45					
50	15.9				14.8								13.6				12.1				8.3	50				
55	15.4	13.2			14.5								13.2				11.6				8.3	55				
60	14.9	12.7			14.1	12.1							12.8	11.4			11	10.3			8.3	60				
65	14.4	12.3			13.7	11.8							12.5	11.1			10.6	10			8.3	65				
70	13.9	11.9	10.2		13.3	11.5							12.1	10.8			10.2	9.7			8.3	8	70			
75	13.5	11.5	9.9		12.9	11.1	9.7						11.8	10.6	9.4		9.8	9.3			8.2	8	75			
80	13	11.1	9.7	7.2	12.5	10.8	9.5						11.5	10.3	9.2		9.5	9	8.2		8	7.9	7.6	80		
85	12.6	10.8	9.5	7.1	12.2	10.5	9.4						11	10.1	9.1		9.2	8.7	8		7.7	7.6	7.3	85		
90	12.2	10.5	9.3	7.1	11.8	10.3	9.2	6.8	10.5	9.9	9	6.7	8.8	8.4	7.8	6.8	7.4	7.7	6.7		7.1	7	6.8	6.5	90	
95	11.8	10.2	9.1	7	11.5	10	9.1	6.8	10	9.5	8.8	6.6	8.5	8.1	7.7	6.7	7.1	7	6.7		7.1	7	6.8	6.5	95	
100	11.5	10	8.9	7	11.1	9.8	8.9	6.8	9.5	9.1	8.7	6.6	8.1	7.9	7.5	6.6	6.9	6.8	6.5	6.4	6.9	6.8	6.5	6.4	100	
105	11.1	9.7	8.7	6.9	10.8	9.6	8.8	6.7	9.1	8.7	8.5	6.6	7.8	7.6	7.3	6.6	6.9	6.5	6.3	6.2	6.9	6.5	6.3	6.2	105	
110	10.8	9.5	8.5	6.8	10.3	9.4	8.6	6.7	8.7	8.4	8.2	6.5	7.5	7.3	7.1	6.5	6.4	6.2	6.1	6	6.4	6.2	6.1	6	110	
115	10.3	9.3	8.4	6.7	9.8	9.2	8.5	6.7	8.3	8	7.9	6.5	7.2	7	6.9	6.4	6.1	5.9	5.9	5.8	6.1	5.9	5.9	5.8	115	
120	9.7	9.1	8.2	6.6	9.2	9	8.4	6.6	8	7.7	7.6	6.4	6.9	6.7	6.6	6.3	5.9	5.7	5.7	5.6	5.9	5.7	5.7	5.6	120	
125	8.9	9	8.1	6.5	8.5	8.8	8.3	6.5	7.6	7.4	7.3	6.3	6.6	6.4	6.4	6.1	5.6	5.4	5.5	5.5	5.6	5.4	5.5	5.5	125	
130	8.1	8.7	7.9	6.4	7.8	8.4	8.1	6.5	7.3	7.2	7.1	6.2	6.3	6.2	6.1	6	5.3	5.2	5.3	5.3	5.3	5.2	5.3	5.3	130	
135	7.4	8.2	7.8	6.3	7	7.9	7.9	6.4	6.9	6.9	6.8	6.1	6	5.9	5.9	5.9	5.1	5	5.1	5.1	5.1	5.1	5.1	5.1	135	
140	6.7	7.5	7.6	6.2	6.4	7.3	7.7	6.3	6.3	6.6	6.6	6	5.8	5.7	5.7	5.7	4.8	4.7	4.8	4.9	4.8	4.7	4.8	4.9	140	
145	6	6.8	7.4	6.1	5.7	6.6	7.3	6.2	5.7	6.4	6.3	5.9	5.5	5.5	5.5	5.5	4.6	4.5	4.6	4.8	4.6	4.5	4.6	4.8	145	
150	5.4	6.2	6.8	5.9	5.1	6	6.6	6.1	5.2	5.9	6.1	5.7	5.2	5.3	5.3	5.4	4.3	4.3	4.4	4.6	4.3	4.3	4.4	4.6	150	
155	4.9	5.6	6.1	5.8	4.6	5.3	6	6	4.9	5.3	5.8	5.6	4.6	5.1	5.1	5.2	4.1	4.2	4.2	4.4	4.1	4.2	4.2	4.4	155	
160	4.3	5	5.5	5.5	4.4	4.8	5.4	5.6	4.7	4.8	5.4	5.4	4.1	4.8	4.9	5	3.7	4	4	4.2	3.7	4	4	4.2	160	
165	3.8	4.4	4.8	5.1	4.1	4.3	4.7	5.1	4.5	4.5	4.8	5.2	3.6	4.4	4.7	4.8	3.3	3.8	3.9	4	3.3	3.8	3.9	4	165	
170	3.7	3.9	4.2	4.3	3.9	4.1	4.2	4.4	4.2	4.3	4.4	4.6	3.1	3.8	4.4	4.6	2.8	3.6	3.7	3.8	2.8	3.6	3.7	3.8	170	
175	3.6	3.7	3.7	3.8	3.7	3.8	3.9	4.1	3.8	4.1	4.2	4.3	2.7	3.4	3.9	4.2	2.4	3.1	3.5	3.7	2.4	3.1	3.5	3.7	175	
180	3.5	3.5	3.5	3.5	3.5	3.6	3.7	4	3.4	3.8	4.1	4.1	2.3	2.9	3.4	3.7	2	2.7	3.2	3.4	2	2.7	3.2	3.4	180	
185	3.3	3.3	3.3		3.3	3.4	3.5	3.8	2.9	3.4	3.8	3.9		2.5	2.9	3.2		2.2	2.8	3.1		2.2	2.8	3.1	185	
190	3.2	3.1	3.1		3.1	3.2	3.3	3.6	2.5	3	3.4	3.5		2.1	2.5	2.7		1.8	2.3	2.6		1.8	2.3	2.6	190	
195					2.8	3	3		2.1	2.6	2.9	2.9														195
200					2.5	2.6				2.1	2.4	2.3														200
I		92/0				92/0				92/46				92								100			I	
II		92/46				92/92				92/92				92								100			II	
III		46/92				92/92				92/92				92								100			III	
IV		46/92				46/92				92/92				92								100			IV	
V		46/92				46/92				46/92				92								100			V	

TAB 110168 / 110161 / 110162 / 110163

Lifting capacities at the folding jib.



133 ft - 184 ft



92 ft



360°



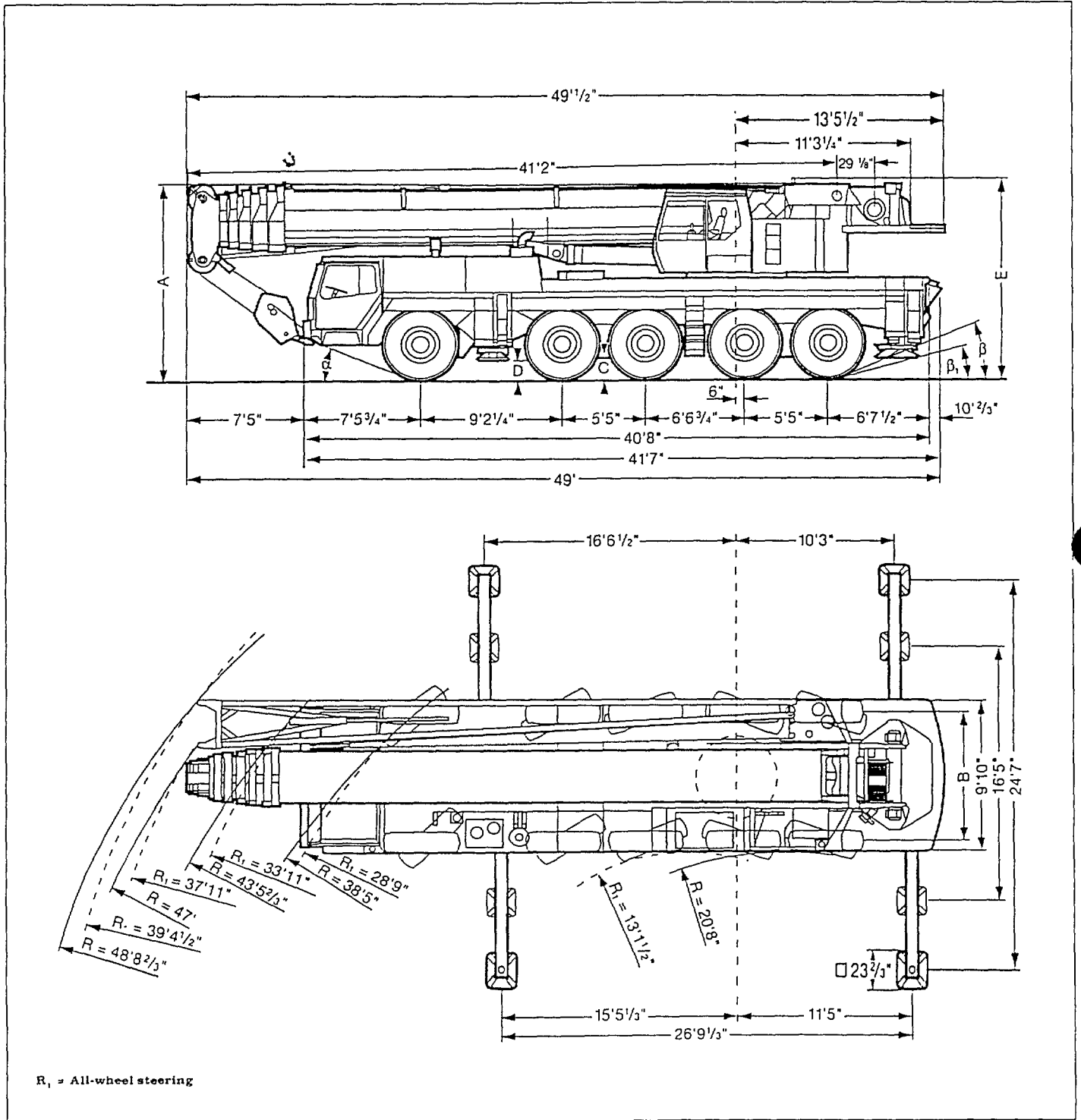
77 200 lbs



85%

ft	133 ft				146 ft				159 ft				172 ft				184 ft				ft		
	92 ft				92 ft				92 ft				92 ft				92 ft						
	0°	15°	30°	45°	0°	15°	30°	45°	0°	15°	30°	45°	0°	15°	30°	45°	0°	15°	30°	45°			
40	12.3																				40		
45	12.1																				45		
50	11.9				11				9.8												50		
55	11.7				10.8				9.6					8.6							55		
60	11.5				10.6				9.5					8.4							60		
65	11.2				10.4				9.5					8.1							65		
70	10.9	9.3			10.2	9			9.3					7.9							70		
75	10.6	9			10	8.7			9.1	8.2				7.6	7				3.7		75		
80	10.3	8.7			9.7	8.5			8.9	8				7.4	6.7				3.7		80		
85	10	8.4			9.5	8.2			8.6	7.8				7.1	6.5				3.7		85		
90	9.6	8.1	6.6		9.3	7.9	6.4		8.3	7.6	6.1			6.9	6.3			3.7	3.1		90		
95	9.3	7.9	6.4		9	7.7	6.2		8	7.4	6			6.6	6.1	5.6		3.7	3.1		95		
100	8.9	7.6	6.3	4.7	8.7	7.5	6.1	4.7	7.7	7.2	5.9			6.4	5.9	5.4		3.7	3.1	2.6	100		
105	8.6	7.4	6.1	4.6	8.5	7.3	6	4.6	7.4	7	5.8	4.6		6.1	5.7	5.3	4.3	3.7	3.1	2.6	105		
110	8.3	7.2	5.9	4.5	8.2	7.1	5.8	4.6	7.1	6.8	5.8	4.5		5.9	5.6	5.1	4.2	3.7	3.1	2.6	110		
115	8	6.9	5.8	4.4	7.9	6.9	5.7	4.5	6.8	6.5	5.7	4.4		5.7	5.4	5	4.1	3.7	3.1	2.6	2.4	115	
120	7.7	6.7	5.7	4.4	7.7	6.7	5.6	4.4	6.5	6.2	5.6	4.3		5.4	5.2	4.8	4.1	3.7	3.1	2.6	2.4	120	
125	7.4	6.6	5.6	4.3	7.4	6.5	5.6	4.4	6.2	6	5.5	4.3		5.2	5	4.7	4.1	3.7	3.1	2.6	2.4	125	
130	7.2	6.4	5.5	4.2	7.1	6.3	5.5	4.3	5.9	5.7	5.4	4.2		4.9	4.9	4.6	4.1	3.7	3.1	2.6	2.4	130	
135	6.9	6.2	5.4	4.2	6.8	6.2	5.4	4.3	5.7	5.5	5.2	4.1		4.7	4.7	4.4	4	3.7	3.1	2.6	2.4	135	
140	6.6	6	5.3	4.2	6.3	6	5.4	4.2	5.4	5.3	5.1	4.1		4.5	4.5	4.3	4	3.6	3.1	2.6	2.4	140	
145	6.1	5.8	5.3	4.1	5.7	5.8	5.3	4.2	5.2	5.1	5	4		4.3	4.3	4.2	3.9	3.4	3.1	2.6	2.4	145	
150	5.5	5.7	5.2	4.1	5.1	5.7	5.2	4.1	4.9	4.9	4.8	3.9		4.1	4.1	4	3.9	3.2	3.1	2.6	2.4	150	
155	4.9	5.5	5.1	4.1	4.6	5.5	5.1	4.1	4.4	4.7	4.6	3.9		3.9	3.9	4	3.9	3.8	3.1	3.1	2.6	2.4	155
160	4.4	5.3	5.1	4.1	4	5.1	5.1	4.1	3.9	4.5	4.5	3.9		3.7	3.8	3.7	3.8	2.9	3	2.6	2.4	160	
165	3.9	4.8	5	4.1	3.6	4.5	4.9	4	3.4	4.3	4.3	3.8		3.5	3.6	3.6	3.7	2.8	2.8	2.6	2.4	165	
170	3.4	4.3	4.9	4.1	3.1	4	4.7	4	3.3	3.9	4.1	3.8		3	3.5	3.4	3.6	2.6	2.7	2.6	2.4	170	
175	2.9	3.8	4.4	4.1	2.9	3.5	4.3	4	3.1	3.4	4	3.8		2.6	3.3	3.3	3.5	2.2	2.6	2.6	2.4	175	
180	2.6	3.3	3.9	4	2.7	3	3.7	3.9	3	3	3.7	3.7		2.1	3	3.2	3.4		2.4	2.6	2.4	180	
185	2.4	2.8	3.4	3.6	2.6	2.7	3.2	3.6	2.7	2.9	3.2	3.6			2.6	3	3.3		2.2	2.4	2.4	185	
190	2.2	2.4	2.8	3	2.4	2.6	2.7	3.1	2.4	2.7	2.8	3.2			2.2	2.9	3.2		1.9	2.3	2.4	190	
195	2.1	2.2	2.3	2.4	2.2	2.4	2.5	2.7	2.1	2.6	2.7	2.8				2.5	2.8			2.1	2.2	195	
200	2	2	2.1	2.3	2	2.2	2.3	2.6		2.3	2.6	2.7				2	2.4				2.1	200	
205	1.9	1.9	1.9		1.9	2	2.1	2.4			2.4	2.5										205	
210							1.9															210	
215							1.8															215	
I		92/0				92/0				92/46				92					100			I	
II		92/46				92/92				92/92				92					100			II	
III		46/92				92/92				92/92				92					100			III	
IV		46/92				46/92				92/92				92					100			IV	
V		46/92				46/92				46/92				92					100			V	

Dimensions.



16.00 R 25	Dimensions									
	A	A 6"	B	C	D	E	α	β	β ₁	
16.00 R 25	13' 1 1/2"	12' 7 1/2"	8' 4 3/4"	18 1/2"	14 2/3"	13 3/4"	23°	23°	15°	

* lowered

Weights.



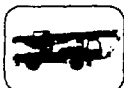
Axle	1	2	3	4	5	Total weight
lbs	26500	26500	26500	26500	26500	132500 ¹⁾





¹⁾ with 15400 lbs counterweight








Load (kips)	No. of sheaves	No. of lines	Weight lbs
264	9	18	2340
236	7	14	2200
178	5	11	1765
116	3	7	1235
50	1	3	970
17.6	-	1	420

Working speeds.



	1	2	3	4	5	R	6
 mph	9.3	14.3	22.3	33	47	8	-
 mph 	5	8	13	19.3	27.3	4.7	45 %
	16.00 R 25						



Drive	infinitely variable	Rope diameter / Rope length	Max. single line pull
	0 - 362 ft/min single line	²⁷ / ₃₂ " / 900'	17400 lbs
	0 - 362 ft/min single line	²⁷ / ₃₂ " / 656'	17400 lbs
	0 - 1.5 rpm		
	approx. 50 seconds to reach 83° boom angle		
	approx. 400 seconds for boom extension from 41 ft - 184 ft		

Crane carrier.

Frame:	Liebherr designed and manufactured, box type, torsion resistant, all-welded construction made of high-tensile structural steel.
Outriggers:	4-point support, all-hydraulic horizontal and vertical operation.
Engine:	8 cylinder, watercooled Liebherr Diesel, type D 9408 TI-E, 400 kW (544 HP) at 2100 rpm acc. to ECE 24.03 and ECE-R 49.02 (EURO II), max. torque 1640 lbs-ft at 1575 rpm. Fuel tank capacity: 132 gallons.
Transmission:	Allison automatic transmission with torque converter and hydrodynamic retarder brake, 5 forward and 1 reverse speed. Transfer case with off-road range.
Axles:	All axles steered. Axles 1, 2, 4 and 5 with planetary gears and differential locks.
Suspension:	All axles with hydropneumatic suspension and hydraulic locking facility.
Tyres:	10 tyres. Tyre size: 16.00 R 25.
Steering:	Hydraulic power steering with dual circuit hydraulic system, mechanical/hydrostatic from lower cab. Stand-by steering pump. Steering acc. to EC directive 70/311/EEC.
Brakes:	Service brake: Dual circuit, servo-air brake, acting on all wheels. Hand brake: by spring action on all wheels of axles 2 to 5. Brakes acc. to EC directive 71/320/EEC.
Driver's cab:	Spacious all-steel cab on resilient mountings, safety glass windows and full range of instruments.
Electrical system:	24 V DC, 2 batteries, lighting according to countries' regulations.

Crane superstructure.

Frame:	Liebherr-made, torsion-resistant, welded construction made of high-tensile structural steel. Connection to truck chassis by triple roller slewing ring, designed for 360° continuous rotation.
Crane engine:	4 cylinder, watercooled Liebherr Diesel, type D 924 T-E, 120 kW (163 HP) at 1800 rpm acc. to EPA/CARB and IMO 1 acc. to ISO 8178 C 1, max. torque 529 lbs-ft at 1200 rpm. Fuel tank capacity: 79 gallons.
Crane drive:	Diesel-hydraulic, with 1 duplex axial-piston pump with automatic output control, 1 duplex gear-type pump, open regulated hydraulic circuits. The hydraulic drive in compact construction is directly flanged to the diesel engine.
Crane control:	Load sensing system, 4 working motions can be performed at the same time, by 2 control levers (joy stick type).
Hoist gear:	Axial piston fixed displacement motor, hoist drum with integrated planetary gear and spring loaded static brake.
Luffing gear:	1 differential hydraulic ram with safety check valve.
Slewing gear:	Axial piston fixed displacement motor, planetary gear, spring loaded static brake.
Crane cab:	All-steel construction fully galvanized, safety glazing, heater, controls and instruments.
Safety devices:	LICCON safe load indicator, hoist limit switch, safety valves against rupture of pipe and hoses.
Telescopic boom:	1 base section and 5 telescopic sections, hydraulically extendable under load. All sections extendable independently. Boom length: 41 ft to 184 ft.
Folding jib:	37 ft to 92 ft long, for mounting on telescopic boom at 0°, 15°, 30° or 45°.
2nd hoist gear:	For two-hook operation, or with folding jib in case main hoist shall remain reeved.
Electrical system:	24 V DC, 2 batteries.