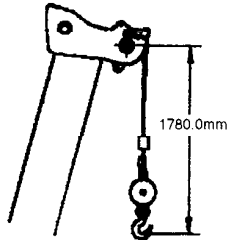


# **P&H<sup>®</sup> Century 122**

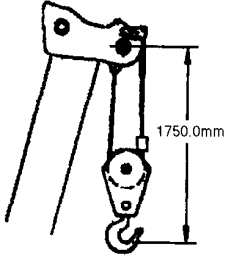
**Lifting Capacities  
Metric (85%)**



# Range Diagrams Standard 21.9 Meter Boom

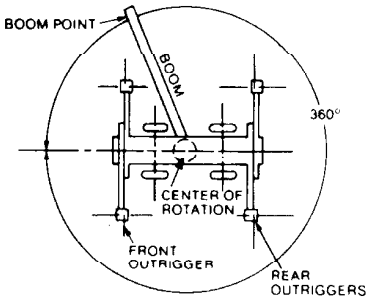


DIMENSIONS TYPICAL FOR ALL ATTACHMENTS



## areas of operation

### ON OUTRIGGERS



### ON TIRES

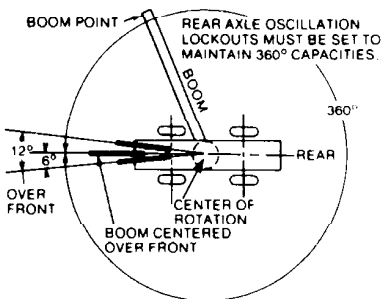


CHART  
1

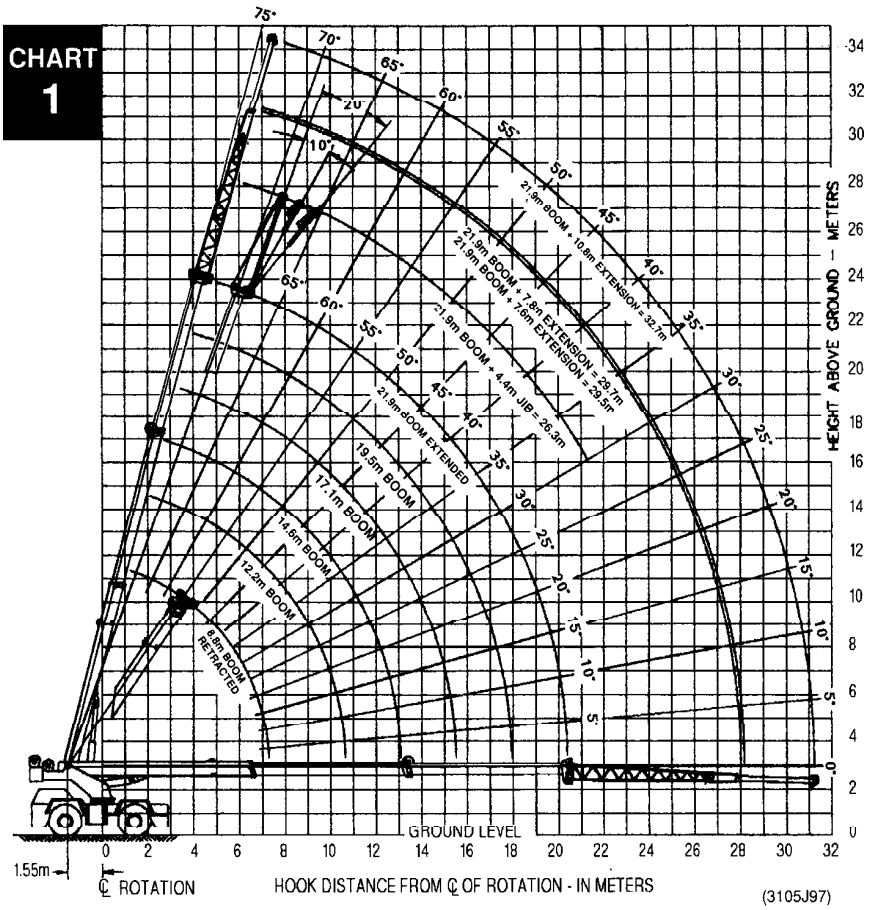
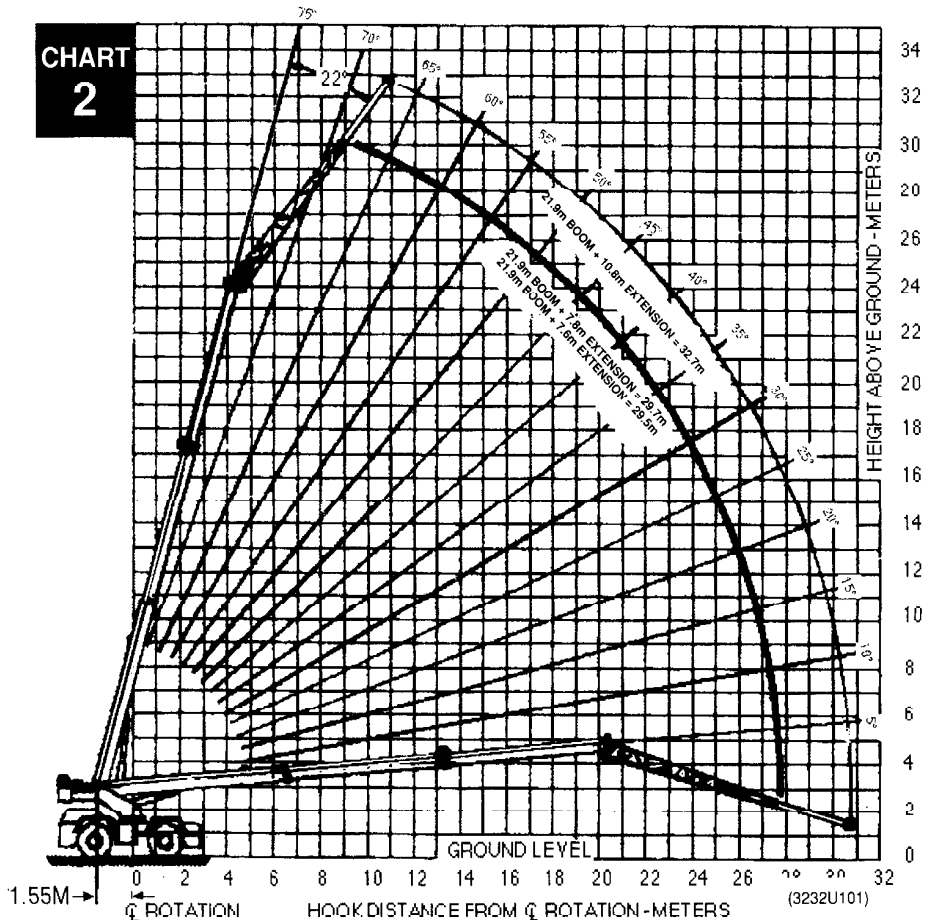


CHART  
2

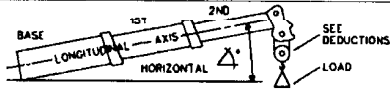


# Century 122 - PCSA Class 10-93

## Standard 21.9 Meter Powered Boom

**CHART 3**

POWERED BOOM RATINGS IN KILOGRAMS WITH OUTRIGGERS EXTENDED														
POWERED BOOM LENGTH														
OPERATING M. BOOM LENGTH	8.8 m		12.2 m		14.6 m		17.1 m		19.5 m		21.9 m		OPERATING M. BOOM LENGTH	
	△	360°	△	360°	△	360°	△	360°	△	360°	△	360°		
3	63	20000	71	17250	75	16950							3	
3.5	59	18600	69	17050	73	16350							3.5	
4	55	17000	66	16150	71	15300							4	
5	47	14050	61	13800	67	13200	71	12650	74	12000			5	
6	35	11500	55	11500	62	11450	67	11050	71	10550	73	9850	6	
7	19	9750	49	9750	57	9750	63	9600	67	9400	70	8950	7	
8			42	8250	52	8250	59	8250	64	8250	68	8000	8	
9			34	7100	47	7100	55	7100	60	7100	65	7100	9	
10			22	6000	41	6000	50	6000	57	6000	61	6000	10	
12					25	4350	40	4350	49	4350	55	4350	12	
14							27	3250	40	3250	48	3250	14	
16									29	2550	40	2550	16	
18											30	1950	18	
20											14	1550	20	



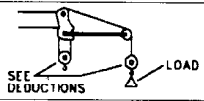
(32R1002)

**INFORMATION:**

- Crane load ratings do not exceed 85% of tipping load.
- Ratings above the heavy line are based on the machine's hydraulic or structural competence and not on machine stability.
- Deductions must be made from rated loads for stowed lattice extension or jib, optional attachments, hooks and hookblocks ( see Deductions Chart on page 8). Weights of slings and all other load handling devices shall be considered part of the load.
- Crane load ratings with outriggers are based on the outriggers fully extended and set to a distance of 2.7 meters from the longitudinal axis of the carrier to the outrigger float pin connection with all load removed from carrier wheels.

**CHART 4**

MAXIMUM JIB LOAD RATINGS IN KILOGRAMS WITH OUTRIGGERS EXTENDED			
MIN. BOOM ANGLE	JIB ANGLE		
	0°	10°	20°
	75°	5900	5100
70°	5450	4750	3850
65°	5000	4350	3550
60°	3950	3700	3250
55°	3150	3000	2850
50°	2550	2450	2400
45°	2150	2050	2000
40°	1800	1750	1750
35°	1600	1550	1500
30°	1400	1350	1350



32R1002

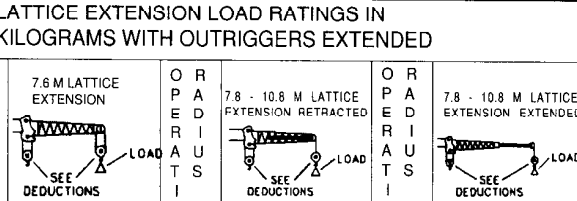
**JIB CAPACITY NOTES:**

- Jib load ratings above the heavy line are based on structural competence of the machine. Ratings below the line are based on stability of the machine and do not exceed 85% of tipping load with fully extended outriggers. Use of outriggers are required when boom is equipped with a jib.
- For bucket ratings on jib, deduct 20% from maximum jib load ratings.
- Warning: Do not lift with jib at boom angles below 30°. Loss of stability below 30° occurs rapidly.*

**CHART 5**

**2° OFFSET**

LATTICE EXTENSION LOAD RATINGS IN KILOGRAMS WITH OUTRIGGERS EXTENDED											
7.6 M LATTICE EXTENSION			7.8 - 10.8 M LATTICE EXTENSION RETRACTED			7.8 - 10.8 M LATTICE EXTENSION EXTENDED					
OPERATING M. BOOM LENGTH	FOR ALL BOOM LENGTHS UP TO 29.6 M.		OPERATING M. BOOM LENGTH	FOR ALL BOOM LENGTHS UP TO 29.7 M.		OPERATING M. BOOM LENGTH	FOR ALL BOOM LENGTHS UP TO 32.8 M.				
	△	RATED LOAD IN KILOGRAMS		△	RATED LOAD IN KILOGRAMS		△	RATED LOAD IN KILOGRAMS			
8	75	5900	8	75	5900	8					
9	73	5600	9	73	5450	9	75	4200			
10	71	5250	10	71	5050	10	73	4050			
12	67	4200	12	67	4200	12	70	3750			
14	62	3200	14	62	3200	14	66	3200			
16	57	2500	16	57	2500	16	62	2500			
18	52	1950	18	53	1950	18	57	1950			
20	47	1550	20	47	1550	20	53	1550			
22	41	1500	22	41	1350	22	48	1500			
24	34	1200	24	34	1100	24	43	1250			
26	25	1000	26	25	850	26	37	1000			
28	8	800	28	10	650	28	29	800			
						30	19	650			



**NOTE:**

- Stability ratings do not exceed 85% of tipping loads.
- When boom is not fully extended, use only boom angles to determine load ratings.
- For boom angles not shown, use rating of next lower boom angle.

(32R1002)

**22° OFFSET**

LATTICE EXTENSION LOAD RATINGS IN KILOGRAMS WITH OUTRIGGERS EXTENDED											
7.6 M LATTICE EXTENSION			7.8 - 10.8 M LATTICE EXTENSION RETRACTED			7.8 - 10.8 M LATTICE EXTENSION EXTENDED					
OPERATING M. BOOM LENGTH	FOR ALL BOOM LENGTHS UP TO 29.6 METERS.		OPERATING M. BOOM LENGTH	FOR ALL BOOM LENGTHS UP TO 29.7 METERS.		OPERATING M. BOOM LENGTH	FOR ALL BOOM LENGTHS UP TO 32.7 METERS.				
	△	RATED LOAD IN KILOGRAMS		△	RATED LOAD IN KILOGRAMS		△	RATED LOAD IN KILOGRAMS			
10	75	3700	10	75	3550	10					
12	71	3500	12	71	3350	12	75	2450			
14	66	3250	14	67	3100	14	71	2300			
16	62	2900	16	62	2750	16	67	2150			
18	56	2400	18	57	2250	18	63	2000			
20	51	1950	20	51	1800	20	58	1850			
22	45	1600	22	45	1400	22	53	1600			
24	37	1300	24	38	1100	24	48	1300			
26	28	1000	26	29	850	26	41	1050			
						28	34	900			

**NOTE:**

- Stability ratings do not exceed 85% of tipping loads.
- When boom is not fully extended, use only boom angles to determine load ratings.
- For boom angles not shown, use rating of next lower boom angle.

(3232U101)

**WARNING:**

Deductions from offset extension load ratings must be applied according to Deduction Table on Page 8.

**Warnings, Definitions and Reaving Chart on page 7 apply to all load rating charts on this page.**

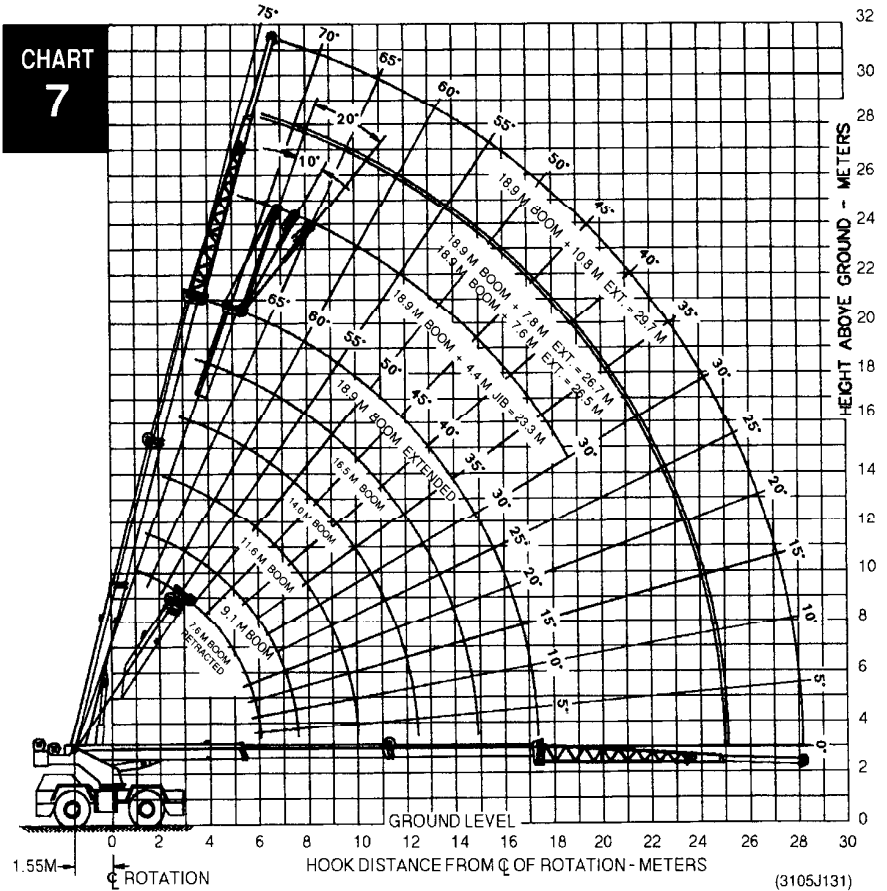
**NOTE:**

For Bucket ratings on 10.8 M extension, deduct 20% from load ratings.

# Range Diagrams

## Optional 18.9 Meter Boom

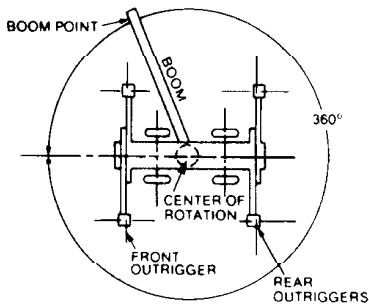
CHART  
7



(3105J131)

### areas of operation

#### ON OUTRIGGERS



#### ON TIRES

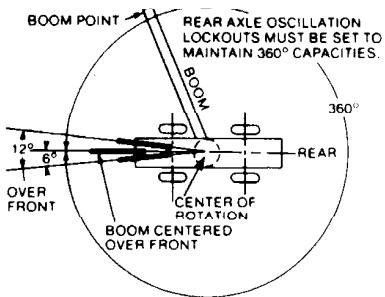
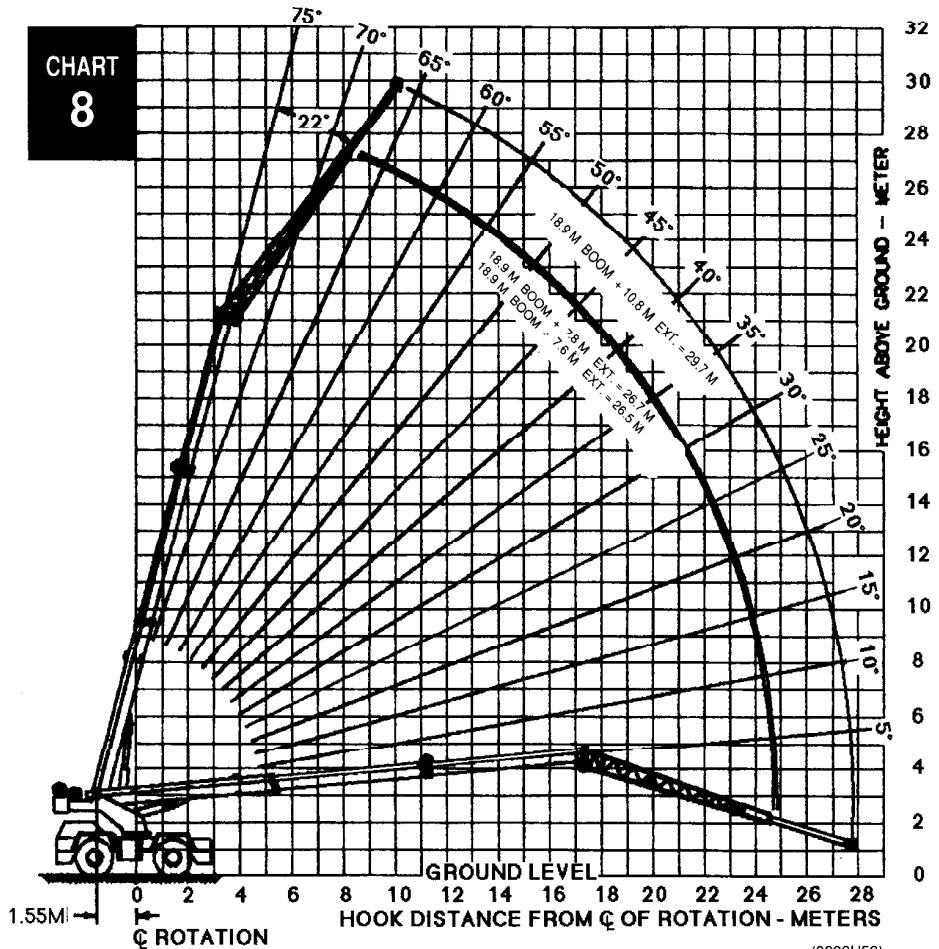


CHART  
8



(3232U59)

# Century 122 - PCSA Class 10-91

## Optional 18.9 Meter Powered Boom

POWERED BOOM RATINGS IN KILOGRAMS WITH OUTRIGGERS EXTENDED													
POWERED BOOM LENGTH													
OPERATING M	7.6 M		9.1 M		11.6 M		14.0 M		16.5 M		18.9 M		OPERATING M
	△	360°	△	360°	△	360°	△	360°	△	360°	△	360°	
3	57	20000	64	18750	70	17550	74	17200					3
3.5	53	18700	60	18400	68	17400	72	16650					3.5
4	48	17100	58	17100	65	16500	70	15650	74	14700	76	13900	4
5	35	14100	48	14100	59	14000	65	13400	70	12900	73	12250	5
6			38	11500	53	11500	60	11450	66	11300	70	10750	6
7			28	9750	45	9750	56	9750	62	9700	66	9450	7
8					37	8200	51	8200	58	8200	63	8200	8
9					27	6950	45	6950	54	6950	59	6950	9
10							38	5900	49	5900	56	5900	10
12									38	4250	48	4250	12
14									24	3200	37	3200	14
16											23	2500	16

MAXIMUM JIB LOAD RATINGS IN KILOGRAMS WITH OUTRIGGERS EXTENDED			
MIN. BOOM ANGLE	JIB ANGLE		
	0°	10°	20°
75°	5850	5200	4400
70°	5650	4850	3900
65°	5200	4400	3550
60°	4450	4000	3350
55°	3550	3400	3100
50°	2950	2800	2700
45°	2450	2400	2350
40°	2150	2100	2050
35°	1900	1850	1850
30°	1700	1700	1650

**OPERATING M** (vertical text on left)

**OPERATING M** (vertical text on right)

**CHART 10** (vertical text on right)

(32R1181)

(32R1181)

- INFORMATION:**
- Crane load ratings do not exceed 85% of tipping load.
  - Ratings above the line are based on the machine's hydraulic or structural competence and not on machine stability.
  - Deductions must be made from rated loads for stowed lattice extension or jib, optional attachments, hooks and hookblocks (see Deductions Chart on page 8). Weights of slings and all other load handling devices shall be considered part of the load.
  - Crane load ratings with outriggers are based on the outriggers fully extended and set to a distance of 2.7 M from the longitudinal axis of the carrier to the outrigger float pin connection with all load removed from carrier wheels.

**JIB CAPACITY NOTES:**

- Jib load ratings above the heavy line are based on structural competence of the machine. Ratings below the line are based on stability of the machine and do not exceed 85% of tipping load with fully extended outriggers. Use of outriggers are required when boom is equipped with a jib.
- For bucket ratings on jib, deduct 20% from maximum jib load ratings.
- Warning: Do not lift with jib at boom angles below 30°. Loss of stability below 30° occurs rapidly.*

**2° OFFSET**

LATTICE EXTENSION LOAD RATINGS IN KILOGRAMS WITH OUTRIGGERS EXTENDED											
OPERATING M	7.6 M LATTICE EXTENSION		OPERATING M	7.8 - 10.8 M LATTICE EXTENSION RETRACTED		OPERATING M	7.8 - 10.8 M LATTICE EXTENSION EXTENDED		OPERATING M	7.8 - 10.8 M LATTICE EXTENSION EXTENDED	
	△	360°		△	360°		△	360°		△	360°
8	72	5800	8	72	5750	8			8		
9	70	5650	9	70	5450	9			9		
10	68	5250	10	68	5100	10	71	3950	10		
12	63	4450	12	63	4350	12	66	3650	12		
14	57	3500	14	58	3400	14	62	3300	14		
16	52	2800	16	52	2650	16	58	2800	16		
18	46	2250	18	46	2100	18	53	2300	18		
20	39	1850	20	39	1700	20	48	1850	20		
22	30	1500	22	31	1400	22	42	1550	22		
24	18	1250	24	20	1150	24	35	1250	24		
						26	25	1050			

**NOTE:**

- Stability ratings do not exceed 85% of tipping loads.
- When boom is not fully extended, use only boom angles to determine load ratings.
- For boom angles not shown, use rating of next lower boom angle.
- For Bucket ratings on 10.8 M extension, deduct 20% from load ratings.

(32R1181)

**22° OFFSET**

LATTICE EXTENSION LOAD RATINGS IN KILOGRAMS WITH OUTRIGGERS EXTENDED											
OPERATING M	7.6 M LATTICE EXTENSION		OPERATING M	7.8 - 10.8 M LATTICE EXTENSION RETRACTED		OPERATING M	7.8 - 10.8 M LATTICE EXTENSION EXTENDED		OPERATING M	7.8 - 10.8 M LATTICE EXTENSION EXTENDED	
	△	360°		△	360°		△	360°		△	360°
10	72	3700	10	73	3550	10			10		
11	70	3550	11	70	3350	11			11		
12	68	3400	12	68	3200	12			12		
14	62	3100	14	63	2950	14	68	2200	14	68	2200
16	57	2900	16	57	2650	16	64	2050	16	64	2050
18	51	2350	18	51	2250	18	59	1900	18	59	1900
20	43	1950	20	44	1800	20	53	1800	20	53	1800
22	35	1550	22	35	1450	22	47	1600	22	47	1600
24	22	1250	24	23	1150	24	40	1350	24	40	1350
						26	30	1100			

**NOTE:**

- Stability ratings do not exceed 85% of tipping loads.
- When boom is not fully extended, use only boom angles to determine load ratings.
- For boom angles not shown, use rating of next lower boom angle.

(3232U59)

**WARNING:**

Deductions from offset extension load ratings must be applied according to Deduction Table on Page 8.

**Warnings, Definitions and Reeving Chart on page 7 apply to all load rating charts on this page.**

# "On Tires" Capacities in Kilograms Standard 21.9 Meter Powered Boom

CHART 13

OPERATING M.	16:00 x 24-16 PLY TIRES			
	STATIONARY		PICK & CARRY BOOM CENTERED OVER FRONT	
	± 6° ARC OVER FRONT	360° ARC	CREEP	4 KmPH
3	15100	10400	12850	8500
3.5	13550	8050	11600	7600
4	10850	6450	10400	6750
5	7400	4500	7400	5450
6	5500	3300	5500	4450
7	4200	2450	4200	3750
8	3450	2000	3450	3200
9	2800	1550	2800	2700
10	2300	1200	2300	2300
12	1600	750	1600	1600
14	1150		1150	1150
16	800		800	800
18	550		550	550

(32U2049)

CHART 14

OPERATING M.	20.50 X 25-20 PLY TIRES			
	STATIONARY		PICK & CARRY BOOM CENTERED OVER FRONT	
	± 6° ARC OVER FRONT	360° ARC	CREEP	4 KmPH
3	14500	10000	12500	9000
3.5	13300	8800	11600	8100
4	11400	7100	10450	7250
5	7850	4950	7850	5850
6	5650	3550	5650	4800
7	4450	2800	4450	4050
8	3550	2150	3550	3450
9	2850	1700	2850	2850
10	2400	1350	2400	2400
12	1650	850	1650	1650
14	1200	500	1200	1200
16	800		800	800
18	550		550	550

(3232U18)

CHART 15

OPERATING M.	16:00 x 25-24 PLY TIRES			
	STATIONARY		PICK & CARRY BOOM CENTERED OVER FRONT	
	± 6° ARC OVER FRONT	360° ARC	CREEP	4 KmPH
3	15200	10600	14200	12050
3.5	13550	8550	12850	10850
4	11400	6900	11000	9750
5	7850	4850	7850	7750
6	5650	3450	5650	5600
7	4450	2700	4450	4450
8	3550	2100	3550	3550
9	2850	1650	2850	2850
10	2400	1300	2400	2400
12	1650	800	1650	1650
14	1200		1200	1200
16	800		800	800
18	550		550	550

(3232U127)

CHART 16

DEDUCTIONS TO BE MADE FROM LOAD RATINGS IN KILOGRAMS					
HOOK BLOCK		HOOK BLOCK ON POWERED BOOM POINT			
		4.5 M.T.	9.1-20 M.T.	4.5 M.T. WITH AUXILIARY SHEAVE	9.1-20 M.T. WITH AUXILIARY SHEAVE
STOWED EXTENSION OR JIB	HOOK BLOCK WEIGHT	70	160	110	210
	7.6M LATTICE EXTENSION	210	300	250	340
	7.8M-10.8M LATTICE EXTENSION	230	320	270	360
	4.4 M JIB	230	320	270	360

NOTE: LOAD DEDUCTIONS APPLY ONLY TO P&H SUPPLIED EQUIPMENT

(32U2649)

CHART 17

TIRE INFLATION			
SIZE	STATIC & CREEP	4 KMPH	TRAVEL
16:00 x 24-16 PR	5.5 BARS	4.1 BARS	3.5 BARS
16:00 x 25-24 PR	6.9 BARS	6.9 BARS	5.2 BARS
17.50 x 25-20 PR	6.6 BARS	5.9 BARS	4.1 BARS
20.50 x 25-20 PR	5.5 BARS	4.5 BARS	3.5 BARS

**WARNING:** CRANE LOAD RATINGS WITHOUT OUTRIGGERS DEPENDS ON TIRE CAPACITY AND CONDITION OF TIRES, INFLATED PER TABLE.

- ### "On Tires" Lifting Data
- WARNINGS:**

  - When transporting a load, machine must be on a firm, level surface with houselock engaged. The load must be centered over front of machine and restrained from swinging. See "Areas of Operation" on page 2 for working ranges.
  - Crane load rating on tires apply only when rear axle lockouts are engaged when swinging 360°.
  - Do not attempt lifts on tires with jib or extension erected.
  - Lift with shortest boom possible for each radius.

**DEFINITIONS:**

  - Creep is motion for less than 61 meters in a 30 minute period and not exceeding 1.6 Kmph.

**INFORMATION:**

  - Ratings above the heavy lines are based on structural competence and not on machine stability.
  - It is recommended that outriggers be extended as far as possible and clear of ground when lifting on tires.
  - Stability ratings do not exceed 75% of tipping loads.

# "On Tires" Capacities in Kilograms

## Optional 18.9 Meter Powered Boom

CHART 18	OPERATING RADIUS IN M.	16:00 x 24-16 PLY TIRES			
		STATIONARY		PICK & CARRY BOOM CENTERED OVER FRONT	
		± 6° ARC OVER FRONT	360° ARC	CREEP	4 KmPH
3	15150	9500	12950	8600	
3.5	13400	7650	11700	7700	
4	10650	6200	10500	6850	
5	7350	5350	7350	5600	
6	5350	3150	5350	4600	
7	4250	2450	4250	3900	
8	3350	1900	3350	3150	
9	2700	1500	2700	2700	
10	2250	1200	2250	2250	
12	1550	750	1550	1550	
14	1150		1150	1150	
16	800		800	800	

(3232U126)

CHART 19	OPERATING RADIUS IN M.	20.50 X 25-20 PLY TIRES			
		STATIONARY		PICK & CARRY BOOM CENTERED OVER FRONT	
		± 6° ARC OVER FRONT	360° ARC	CREEP	4 KmPH
3	14900	10600	12900	9100	
3.5	13400	8200	11700	8200	
4	10600	6600	10550	7350	
5	7250	4600	7250	6000	
6	5350	3350	5350	4950	
7	4200	2600	4200	4200	
8	3450	2100	3450	3450	
9	2800	1650	2800	2800	
10	2300	1300	2300	2300	
11	1950	1100	1950	1950	
12	1650	850	1650	1650	
14	1200		1200	1200	
16	900		900	900	

(3232U90)

CHART 20	OPERATING RADIUS IN M.	16:00 X 25-24 PLY TIRES			
		STATIONARY		PICK & CARRY BOOM CENTERED OVER FRONT	
		± 6° ARC OVER FRONT	360° ARC	CREEP	4 KmPH
3	15250	10000	14300	12150	
3.5	13100	8050	13100	10950	
4	10850	6550	10850	9750	
5	7500	4600	7500	7500	
6	5450	3350	5450	5450	
7	4300	2600	4300	4300	
8	3450	2050	3450	3450	
9	2800	1600	2800	2800	
10	2350	1300	2350	2350	
12	1650	800	1650	1650	
14	1200		1200	1200	
16	850		850	850	

(3232U126)

DEDUCTIONS TO BE MADE FROM LOAD RATINGS IN KILOGRAMS					CHART 21
HOOK BLOCK		HOOK BLOCK ON POWERED BOOM POINT			
		4.5 M.T.	9.1-20 M.T.	4.5 M.T. WITH AUXILIARY SHEAVE	
STOWED EXTENSION OR JIB	HOOK BLOCK WEIGHT	70	160	115	
	7.6M LATTICE EXTENSION	140	230	185	275
	7.8M-10.8M LATTICE EXTENSION	140	230	185	275
	4.4 M JIB	205	300	250	345

NOTE: LOAD DEDUCTIONS APPLY ONLY TO P&H SUPPLIED EQUIPMENT

(3232U125)

### General Lifting Data

#### WARNINGS:

1. Loaded boom angle at specified boom lengths give only an approximation of the operating radius. The boom angle before loading should be greater to account for deflections. Do not exceed the operating radius for rated loads.
2. Positioning or operation of powered boom lengths at radii beyond the maximums or minimums shown, is not intended or approved.
3. Positioning or operation of lattice extensions or jib at boom angles beyond the maximums or minimums shown, is not intended or approved.
4. For powered boom lengths not shown, use rating of next longer boom length. For load radii not shown, use rating of next longer radius.
5. Crane load ratings on outriggers are based on freely suspended loads with the machine leveled and standing on a firm, uniform supporting surface. No attempt shall be made to move a load horizontally on the ground in any direction.
6. Practical working loads depend on supporting surface, wind, and other factors affecting stability, hazardous surroundings, experience of personnel, and proper handling, all of which must be taken into account by the operator.
7. The maximum load which may be telescoped is limited by hydraulic pressure, boom angle, and powered boom lubrication. It is safe to attempt to telescope any load within the limits of the load rating chart.

#### DEFINITIONS:

1. Operating radius is the horizontal distance from the center of rotation before loading to the center of the vertical hoist line or tackle with load applied.
2. Loaded boom angle, as shown in the column headed by  $\Delta$ , is the included angle between the horizontal and longitudinal axes of the boom base after lifting rated load at rated radius.

MAIN & AUXILIARY HOIST REEVING 6 X 25										CHART 22
13mm DIA. WIRE ROPE - BREAKING STRENGTH 12065 kg										
PARTS OF LINE	1	2	3	4	5	6	7	8	9	
MAXIMUM LOAD	3400	6800	10200	13600	17000	20000				
MAIN & AUXILIARY HOIST REEVING 8 X 19										
13mm DIA. WIRE ROPE - BREAKING STRENGTH 10614 kg										
PARTS OF LINE	1	2	3	4	5	6	7	8	9	
MAXIMUM LOAD	2100	4200	6300	8400	10600	12700	14800			

NOTE: OPERATION OF THIS EQUIPMENT IN EXCESS OF RATED LOADS AND DISREGARD OF INSTRUCTIONS IS AN UNSAFE PRACTICE AND WILL RESULT IN DENIAL OF WARRANTY CLAIMS.

# 21.9 Meter Boom

## DEDUCTIONS TO BE MADE FROM LOAD RATINGS IN KILOGRAMS

CHART

23

DESCRIPTION		WITHOUT HOOK BLOCK ON BOOM POINT	HOOK BLOCK ON POWERED BOOM POINT				
			4.5 M.T.	9.1-20 M.T.	4.5 M.T. WITH AUXILIARY SHEAVE	9.1-20 M.T. WITH AUXILIARY SHEAVE	
HOOK BLOCK WEIGHT		-----	70	180	110	210	
HOISTING LOAD FROM POWERED BOOM	7.6M LATTICE EXTENSION	STOWED	-----	90	180	140	230
		ERECTED ONLY	-----	550	640	590	680
		4.5 M.T. BLOCK	-----	660	750	700	790
	9.1M.T. BLOCK	-----	840	930	890	980	
		STOWED	-----	70	160	110	210
		ERECTED ONLY	-----	840	930	890	980
	4.5 M.T. BLOCK	-----	950	1040	1000	1090	
		9.1M.T. BLOCK	-----	1040	1230	1180	1270
		ERECTED ONLY	-----	910	1000	950	1040
	4.5 M.T. BLOCK	-----	1040	1130	1090	1180	
		9.1 M.T. BLOCK	-----	1380	1330	1430	1380
		STOWED	-----	140	230	180	270
4.5 M.T. BLOCK	-----	360	450	410	500		
	9.1 M.T. BLOCK	-----	450	550	500	590	
	9.1 M.T. BLOCK	-----	590	680	640	730	
HOISTING LOAD FROM EXTENSION OR JIB	7.6 M LATTICE EXTENSION	4.5 M.T. BLOCK	70	110	180	140	210
		9.1 M.T. BLOCK	160	210	270	230	300
	7.8 M LATTICE EXTENSION	4.5 M.T. BLOCK	70	110	180	140	210
		9.1 M.T. BLOCK	160	210	270	230	300
10.8 M LATTICE EXTENSION	4.5 M.T. BLOCK	70	110	180	140	180	
	9.1 M.T. BLOCK	160	210	250	230	270	
4.4 M. JIB	4.5 M.T. BLOCK	70	110	180	140	210	
	9.1 M.T. BLOCK	160	210	270	230	300	

NOTE: LOAD DEDUCTIONS APPLY ONLY TO P&H SUPPLIED EQUIPMENT

(32R1002)



NOTE: All designs, specifications and components of the equipment described above are subject to change at the manufacturer's sole discretion at any time and without advance notice. The charts and information printed here are only a guide and may not be complete. They should not be relied upon to operate the crane. The individual load charts and related lifting data on each crane must be understood and govern operation of the crane. Data published herein is informational in nature and shall not be construed to warrant suitability of the machine for any particular purpose as performance may vary with conditions encountered. The only warranty applicable is our standard warranty for this machine.



**PPM CRANES, INC**  
Manufacturer of P&H Mobile Cranes

P. O. Box 260002  
Conway, SC 29526 2602, USA  
Phone: 1 803 349 6900

# 18.9 Meter Boom

## DEDUCTIONS TO BE MADE FROM LOAD RATINGS IN KILOGRAMS

CHART

24

DESCRIPTION		WITHOUT HOOK BLOCK ON BOOM POINT	HOOK BLOCK ON POWERED BOOM POINT				
			4.5 M.T.	9.1-20 M.T.	4.5 M.T. WITH AUXILIARY SHEAVE	9.1-20 M.T. WITH AUXILIARY SHEAVE	
HOOK BLOCK WEIGHT		-----	70	160	120	210	
HOISTING LOAD FROM POWERED BOOM	7.6M LATTICE EXTENSION	STOWED	-----	70	160	120	210
		ERECTED ONLY	-----	610	710	660	750
		4.5 M.T. BLOCK	-----	840	840	800	890
	9.1M.T. BLOCK	-----	950	1050	1000	1090	
		STOWED	-----	70	160	120	210
		ERECTED ONLY	-----	930	1020	980	1070
	4.5 M.T. BLOCK	-----	1070	1160	1110	1200	
		9.1M.T. BLOCK	-----	1270	1360	1320	1410
		ERECTED ONLY	-----	1020	1110	1070	1160
	4.5 M.T. BLOCK	-----	1180	1270	1230	1320	
		9.1 M.T. BLOCK	-----	1430	1520	1480	1570
		STOWED	-----	120	210	160	250
4.5 M.T. BLOCK	-----	390	480	430	520		
	9.1 M.T. BLOCK	-----	480	570	520	610	
	9.1 M.T. BLOCK	-----	640	730	680	770	
HOISTING LOAD FROM EXTENSION OR JIB	7.6 M LATTICE EXTENSION	4.5 M.T. BLOCK	70	120	160	140	180
		9.1 M.T. BLOCK	160	210	250	230	270
	7.8 M LATTICE EXTENSION	4.5 M.T. BLOCK	70	120	160	140	180
		9.1 M.T. BLOCK	160	210	250	230	270
10.8 M LATTICE EXTENSION	4.5 M.T. BLOCK	70	120	160	120	180	
	9.1 M.T. BLOCK	160	210	250	210	270	
4.4 M. JIB	4.5 M.T. BLOCK	70	120	180	140	210	
	9.1 M.T. BLOCK	160	210	270	230	300	

NOTE: LOAD DEDUCTIONS APPLY ONLY TO P&H SUPPLIED EQUIPMENT